



## NEW ALBANY CITY COUNCIL MEETING MINUTES

March 19, 2019

### **CALL TO ORDER:**

Mayor Spalding called to order the New Albany City Council Meeting of March 19, 2019 at 6:30 p.m. at the New Albany Village Hall, 99 West Main Street, New Albany, Ohio. Staff attending were City Manager Joseph Stefanov, Law Director Mitch Banchefsky, Finance Director Bethany Staats, Police Chief Greg Jones, City Engineer Ed Ferris, Engineer Mike Barker, Community Development Director Jennifer Chrysler, Public Service Director Mark Nemec, Human Resource Officer Lindsay Rasey, Public Information Officer Scott McAfee, and Clerk of Council Jennifer Mason.

Mayor Spalding led the assemblage in the Pledge of Allegiance.

### **ROLL CALL:**

The following Mayor/Council Members answered Roll Call:

Mayor Sloan Spalding	P
CM Colleen Briscoe	P
CM Marlene Brisk	P
CM Michael Durik	P
CM Chip Fellows	P
CM Kasey Kist	P
CM Matt Shull	P

### **ACTION ON MINUTES:**

Mayor Spalding asked if council had reviewed the proposed March 5, 2019 regular meeting minutes and asked if they had any additions or corrections. Clerk Mason reported that she made changes to 4 sections after the first draft was distributed. She emailed out those changes to council and senior staff. Those changes took place in the Charter Review Commission report - "for" to "four," Correspondence/Communications "Architectural Review Board" to "Planning Commission" and more detail was added, Resolution R-15-2019 - three minor changes, and Resolution R-16-2019 - "NAECA" to "NACA." Hearing no further suggested changes, Mayor Spalding moved to adopt the March 5, 2019 regular meeting minutes as amended. Council Member Briscoe seconded and council voted with seven yes votes to approve the regular meeting minutes.

### **ADDITIONS OR CORRECTIONS TO THE AGENDA:**

NONE.

### **HEARING OF VISITORS:**

Ms. Reed's 6<sup>th</sup> Grade Class - Rose Run project video and presentation

Community Development Director Jennifer Chrysler told council she was presenting on behalf of Adrienne Joly who could be present. Director Joly had enjoyed showing Ms. Reed's 6<sup>th</sup> Grade Class Rose Run project video to many. Director Chrysler talked about student involvement in the Rose Run development and the groundbreaking.



## NEW ALBANY CITY COUNCIL MEETING MINUTES

March 19, 2019

Ms. Reed expressed that it meant a lot to her personally, and also to her students, to be able to present their project to council. The students had been working on this project since school started, several times a week, all year long. This presentation was the culmination of all of the work they did and the data they collected (attached). Ms. Reed said that sometimes adults underestimated the youth, yet they were the leaders of tomorrow, and she was impressed with everything they'd done. The student's presentation was a result of their meeting with Ms. Joly who visited the school three different times and fielded many questions. The students attended the Rose Run groundbreaking ceremony. They came away from the groundbreaking determined to make a difference. They wanted to do something that mattered with their community and for their community. This project was their choice. The goal was to share their research behind one investigative question which they developed.

The following students addressed council, coming up individually or in pairs, to present PowerPoint slides (attached). Alisha Arora, Carson Baker, Kendall Brown, Aidan Dickson, Rio Hall, Walter Hanlon, Wyatt Hines, Julia Isla, Hayato Kato, Easton Markus, Amav Nawani, Alex Schwarz, Dana Stan, Parum Timbadia, and Karen Yao.

The students concluded their presentation with thanks to council and to all the administrators and people that helped, including Ms. Joly, Mrs. Reed, Mrs. Paulsen, and Ms. Slanec, and all the MetroPark staff.

Mayor Spalding praised the students for evaluating and contributing to a community development project. Council valued the information the students provided. He expressed hope that people as passionate and engaged as the students would come to council meetings, letting them know what mattered in their communities. Council expressed how impressed they were and thanked the students for a high-quality presentation.

Council Member Shull asked whether the students considered large stones for the stream crossings. Two students replied that they thought about that at the beginning, but chose wood for safety reasons. Wood could include handrails and support beams. Council Member Fellows asked and the students answered that they considered handicapped accessible equipment, but did not design it. Council Member Fellows told the students that he hoped they could be kept up to date as the Rose Run project progressed. Director Chrysler stated that Director Joly would continue to serve as an active part of the Rose Run team and update them. Director Joly had also talked to several other classes, including a high school honors economics class in relation to how a park could spur economic development. Much of the Rose Run project was influenced by ideas that had come from students. While the city may not be able to implement all proposals, the ideas were influential, and Director Chrysler expected to see evidence of that sprinkled throughout the park.

Ms. Reed, given the final word, praised the students for their work. From start to finish, this project was theirs.

### **BOARDS AND COMMISSIONS:**

**PLANNING COMMISSION:** Mayor Spalding reported that there were 12 members of the public present at the last PC meeting. The PC heard a zoning change request for a possible hotel/gas station/retail area at Walton Parkway and State Route 62. The public present expressed concern about the pace of development in New Albany, some stating that there was too much traffic already on State Route 62. There



## NEW ALBANY CITY COUNCIL MEETING MINUTES

March 19, 2019

were questions about the network of roads that could serve the area. There was interest in sewer and water connections. The PC and city staff did their best to address those issues. While this was a zoning change, whatever was developed would come back before the PC for Final Development Plan approval. At the meeting, Development Services Manager Stephen Mayer collected several peoples' information to keep them apprised. The zoning was approved with conditions per the staff report.

The PC approved preliminary and final plat designs for Nottingham Trace. The PC approved a model home to be constructed at Epcon 55 & Older community for two years with conditions. A sign for the model home was also approved. The PC approved a preliminary and final plat design for the extension of Innovation Campus Way West. There was discussion about the cul-de-sac termination and whether it would be sufficient for semi-trucks.

The PC's organizational meeting was postponed when more PC members could be present.

PARKS AND TRAILS ADVISORY BOARD: No meeting.

ACHITECHTURAL REVIEW BOARD: Council Member Shull reported that the ARB approved a Certificate of Appropriateness application for a parking lot relocation for Animals-R-Special at 88 N. High Street. The ARB approved a Certificate of Appropriateness for modifications to building elevations at New Albany Methodist Church. The ARB approved Blue Horseshoe Partners' application for a Certificate of Appropriateness for demolition at 24 E. Main Street. Mayor Spalding asked and Council Member Shull reaffirmed that, when Andrew Maletz's company had an issue before the ARB, Mr. Maletz always abstained.

BOARD OF ZONING APPEALS: No meeting.

BOARD OF CONSTRUCTION APPEALS: Council Member Kist reported that the BCA conducted an organizational meeting. All positions stayed the same.

The BCA discussed the lack of agenda items for the last three years. Development Services Manager Stephen Mayer spoke on how the Ohio Revised Code required a board to hear appeals, but that board did not have to be a BCA. The city had the BZA, which also heard appeals. After further research and talking to the law director, it was likely that the BCA would be dissolved. Director Chrysler offered that staff had discussed the possibility over the years. Staff may offer legislation to amend city code section 1300 to dissolve the BCA and give the powers and duties to the BZA. There was also discussion on whether there needed to be a person with particular expertise or professional background on whichever board heard these cases. Staff was looking into that issue. Council Member Kist noted that the BCA felt comfortable, in part given how few cases were heard, for a qualified person on staff to give a professional point of view. Director Chrysler told council the matter could also be related certain types of certification and the city would not want to do anything to jeopardize their status. Council Member Kist told council, that pending the above investigation, this meeting could be his one and only BCA meeting.



## NEW ALBANY CITY COUNCIL MEETING MINUTES

March 19, 2019

ECONOMIC DEVELOPMENT COMMISSION: No meeting.

PUBLIC RECORDS COMMISSION: No meeting.

CHARTER REVIEW COMMISSION: No meeting.

**CORRESPONDENCE AND COMMUNICATION:**  
NONE.

### **SECOND READING AND PUBLIC HEARING OF ORDINANCES:** **ORDINANCE O-08-2019**

Mayor Spalding read by title APPROPRIATION AMENDMENT ORDINANCE

AN ORDINANCE TO TRANSFER FUNDS FROM THE GENERAL FUND AND TO AMEND APPROPRIATIONS FOR CURRENT EXPENSES AND OTHER EXPENDITURES DURING THE FISCAL YEAR ENDING DECEMBER 31, 2019.

Finance Director Bethany Staats told council that this ordinance addressed an excess General Fund balance above the 65% recommended reserve for 2018. Staff wanted to allocate \$2.5 million to the Capital Improvement Fund to relieve some of the pressure from projects drawing from that fund.

Council Member Shull asked and Director Staats answered that the 65% was a very conservative operating budget reserve, in fact, 35% was a common reserve threshold. The former city finance director conducted a revenue analysis and 60%- 65% was the recommended reserve amount based on the city's history of income tax revenues and the kinds of companies located in city. Finance Director Bethany Staats stated an analysis could be rerun if council wanted that. The credit rating agencies were pleased with the 65% reserve. City Manager Joseph Stefanov stated that the city could keep a higher reserve, Dublin carried 100%, but he encouraged council to also consider transferring monies to the Infrastructure Replacement Fund. The city was evaluating all of its underground infrastructure to create a more accurate value, determine how much had been depreciated over time, and estimate how much of its useful life was left. Staff would then come up with a target for funding that infrastructure.

Mayor Spalding opened the Public Hearing. Hearing no comments or questions from the public, he closed the Public Hearing.

Council Member Briscoe moved to adopt the ordinance. Council Member Shull seconded and council voted with seven yes votes to approve Ordinance O-08-2019.



## NEW ALBANY CITY COUNCIL MEETING MINUTES

March 19, 2019

### INTRODUCTION AND FIRST READING OF ORDINANCES

#### **ORDINANCE O-09-2019**

AN ORDINANCE TO AMEND THE ZONING ORDINANCE OF THE CITY OF NEW ALBANY BY AMENDING THE ZONING MAP TO REZONE 12.47 +/- ACRES OF LAND GENERALLY LOCATED NORTH OF AND ADJACENT TO U.S. 62/JOHNSTOWN ROAD, SOUTH OF AND ADJACENT TO BEVELHYMER ROAD, AND EAST OF AND ADJACENT TO WALTON PARKWAY FOR AN AREA TO BE KNOWN AS THE "WALTON-62 COMMERCE DISTRICT" FROM ITS CURRENT ZONING OF "I-PUD" INFILL PLANNED UNIT DEVELOPMENT AND "R-1" RESIDENTIAL DISTRICT TO "I-PUD" INFILL PLANNED UNIT DEVELOPMENT AS REQUESTED BY THE NEW ALBANY COMPANY LLC C/O AARON UNDERHILL, ESQ.

Community Development Director Jennifer Chrysler told council that this legislation represented a rezoning from R-1 Residential District and I-PUD Infill Planned Unit Development (I-PUD) to I-PUD. I-PUD was generally used in more sensitive areas that could include major interchanges or intersections. The city encouraged the developer to use I-PUD because it contained strict development standards, and any Final Development Plan (FDP) would go back before the Planning Commission (PC) which would trigger public notification. This gave residents a chance address any concerns to the PC regarding an identified final user.

Director Chrysler stated that the prior I-PUD zoning covered about 5.9 acres. This expansion covered another approximately 6.57 acres. This I-PUD would include newer development standards in the text. Staff was supporting this rezoning since these better practices which the city had learned were being rolled in. The commercial uses were the same as those already in place. The zoning permitted general office activities, retail stores, personal services, restaurants, drive-thrus for restaurants – but not drive-thrus for carry-out beverage service, home improvement stores, and garden centers. The developer established a retail square footage cap at 15,000 sq. ft. per single user to ensure that retail uses stayed on a neighborhood scale.

The zoning text contained two sub-areas, one of which allowed a hotel use. A modification of the old text allowed for a hotel to be 54 foot tall, similar to the other hotels in the area. All other uses had to stay within the 35 foot height requirement. The proposed text included new design standards and bike parking. Screening and tree preservation were enhanced to include interior landscaping to be provided at a minimum of 8% of the total parking lot pavement area. The text further specified tree installation, both type and method. Director Chrysler noted the site location and said that the Strategic Plan anticipated commercial development would extend up Johnstown Road. This area would be studied as part of the city's Strategic Plan update.

This area was subject to the Triangle Area plan, a study the city commissions a few years prior to help guide development patterns. The study called for more road connectivity. At Planning Commission, a resident was worried about a potential road connection to Dean Farm Road, and increased traffic was a frequent concern. Director Chrysler observed that traffic studies showed that more connections dispersed traffic. The Planning Commission (PC) approved the new zoning text with conditions on March 18, 2019. The Rocky Fork Blacklick Accord recommended approval to the PC on February 21, 2019. This legislation would come back to council for second reading on April 2, 2019.





## **NEW ALBANY CITY COUNCIL MEETING MINUTES**

**March 19, 2019**

Council Member Kist asked and Mayor Spalding answered that there was a lot of conversation about road structures, ingress to and egress from the site, and traffic in general at the PC meeting. The PC members discussed sidewalks and screening for parking. Council Member Kist asked and Director Chrysler confirmed that sub-area A was earmarked for a hotel user, a hotel could be 54 feet high, and the text called for a 30 foot setback from the neighboring property. Council Member Kist asked and Director Chrysler replied that the PC did not discuss the 30 foot setback. Mayor Spalding noted that the Final Development Plan would have to come back to the PC and that would likely be a topic of conversation at that time.

Council Member Kist asked about the stubbed access road. Staff anticipated there would be commercial pressures in the area and wanted to set an expectation for the development pattern. It was worse for traffic to have a retail section with multiple businesses each having a curb cut, like Hamilton Road. Director Chrysler clarified that depicted roads were just conceptual at this point and any final design would have to be user specific. Council Member Brisk asked and Director Chrysler confirmed that a lot of curb cuts on State Route 62 would be problematic with the State Route 62/State Route 161 interchange nearby. Director Chrysler explained that it was important to get planning and policies in place and set the stage for multiple potential developers.

Council Member Shull recalled discussions of a possible gas station south of State Route 161. Council Member Shull asked and Dick Roggenkamp, Director of Real Estate for The New Albany Company, answered that there was the potential for several gas stations north and south of the expressway. Mr. Roggenkamp discussed traffic patterns around gas stations. Council Member Shull preferred to keep the area south of State Route 161 open for other opportunities. Director Chrysler stated that all options were on the table. Council and staff discussed when they might know what the uses would be. Council Member Brisk was hesitant about having three gas stations within a short distance of each other. Council discussed the demand for gas stations.

Mayor Spalding set the ordinance for second reading at the next council meeting.

### **ORDINANCE O-10-2019**

**AN ORDINANCE TO ACCEPT A 0.133 ACRE OPEN SPACE EASEMENT AT 200 MAIN STREET AS REQUESTED BY THE NEW ALBANY COMPANY LLC**

Director Chrysler stated this legislation would accept a public easement allowing the city to access the property for public use and passive recreational purposes. She described the location. The easement covered the portion of the property that had been improved to include landscaping and benches. The private property owner, 200 Main LLC, would maintain the space in perpetuity. Director Chrysler told council that the ordinance also contained the statutory mechanism for the developer to get reimbursed through a Tax Increment Financing (TIF) fund if they requested it. The city was not required to accept the project for reimbursement, however, creating open spaces accessible to the public was considered when the city expanded the Village Center TIF.

Mayor Spalding set the ordinance for second reading at the next council meeting.

### **READING AND PUBLIC HEARING OF RESOLUTIONS**

NONE.



## NEW ALBANY CITY COUNCIL MEETING MINUTES

March 19, 2019

### STANDING COMMITTEE REPORTS:

- A. Finance Committee: No report.
- B. Safety Committee: No report.
- C. Public Utilities: No report.
- D. Service and Public Facilities Committee: No report.
- E. Planning and Economic Development Committee: No report.
- F. Administration Committee: No report.
- G. Grants and Non-Profit Funding:

### REPORTS OF REPRESENTATIVES:

- A. Council Representative to MORPC: City Manager Joseph Stefanov reported that MORPC kicked off their 2019 air quality season which ran from March 1<sup>st</sup> through October 31<sup>st</sup>. MORPC would provide announcements on poor air quality days. The MORPC board approved a resolution in support of the governor's proposed 18 cents per gallon gas tax in order to improve local roads. MORPC's 2050 Land Use Forecast would be released soon and be open for public feedback. June 8 to 9, MORPC was partnering with the Columbus Arts Festival on Riverfest. MORPC would be offering canoes and kayaks to encourage people to experience Columbus from the river.
- B. Council Representative to Joint Parks and Recreation: No meeting.
- C. Council Representative to New Albany Plain Local Schools: Council Member Brisk reported that the Director of Student Services John Hood presented the school's program for safety throughout the school campus. There was software that Administration could access. Mr. Hood talked about drills to handle certain situations. The Department of Homeland Security had visited the campus and done an assessment. They were pleased with the outcome, favorably comparing the New Albany Schools to other schools and college campuses. The Department of Homeland Security was impressed with the school's unique relationship with the New Albany Police Department and the Plain Township Fire Department.
- D. Council Representative to Plain Township: Council Member Durik reported that he was unable to attend the meeting, but that township primarily was reviewing its expenses and day-to-day activities.

### REPORTS OF CITY OFFICIALS:



## NEW ALBANY CITY COUNCIL MEETING MINUTES

March 19, 2019

- A. Mayor: Mayor Spalding reported that he was unable to meet with Dr. Kevin Klingele, however, Dr. Klingele delivered a fairly comprehensive report to council which included the status of the Miracle Field project and their fundraising efforts. There was a lot of momentum behind the project and Mayor Spalding believed Dr. Klingele was hopeful to move forward to the next design phase soon. Mayor Spalding encouraged council to reach out to Dr. Klingele or Tom Rubey, Development Director for The New Albany Company, with questions.
- B. Clerk of Council: No report.
- C. Finance Director: Finance Director Bethany Staats distributed the newly reformatted January and February financial reports to council. Regarding the February report, she pointed out that income tax revenues were lower than at this same time in 2018. There had been some significant individual refunds. The city conservatively budgeted its income tax revenues. Director Staats was not concerned for the remainder of the year, but would continue to watch those numbers. The city was still tracking ahead in the General Fund thus far.
- D. City Manager: City Manager Joseph Stefanov reported that the city received a thank you card from the Greater Columbus Chinese Chamber of Commerce for the city's participation and council's attendance at the New Year's Gala.
- E. City Attorney: No report.

### POLL FOR PUBLIC COMMENT:

NONE.

### POLL FOR COUNCIL COMMENT:

NONE.

### EXECUTIVE SESSION:

Mayor Spalding moved that council go into executive session pursuant to Ohio Revised Code 121.22 (G)(1) to consider appointment, employment, promotion or compensation, discipline, demotion or dismissal of a public employee or official, reserving the right to take action afterwards. Council Member Shull seconded and council voted with seven yes votes to go into executive session at 7:48 p.m.

Council Member Briscoe moved that council come out of executive session and resume the regular meeting. Mayor Spalding seconded and council voted with seven yes votes come out of executive session and resume the regular meeting. Council resumed the regular meeting at 8:03 p.m.

### OTHER BUSINESS:

NONE.





## NEW ALBANY CITY COUNCIL MEETING MINUTES

March 19, 2019

### ADJOURNMENT:

With no further comments and all scheduled matters attended to, Council Member Briscoe moved and Council Member Brisk seconded to adjourn the March 19, 2019 Regular Council meeting at 8:03 pm.

### ATTEST:

  
Jennifer H. Mason, Clerk of Council

  
Sloan Spalding, Mayor

4/2/19  
Date

# STUDENTS & TEACHERS

Carson Baker

Aidan Dickson

Arnav Nawani

Isabella Ori

Dana Stan

Tanden Blake

Easton Markus

Walter Hanlon

Julia Isla

Cambell Keating

Rio Hall

Alisha Arora

Wyatt Hines

Alexander  
Schwarz

Parum Timbadia

Sophia Tyron

Keliang Yao

Kendall Brown

Hayato Kato

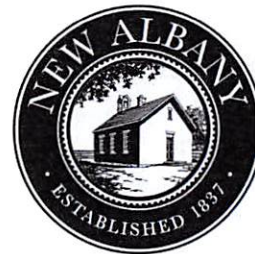


Mrs. Sandra Reed  
reed.11@napls.us

Mrs. Lea Paulsen  
paulsen.1@napls.us

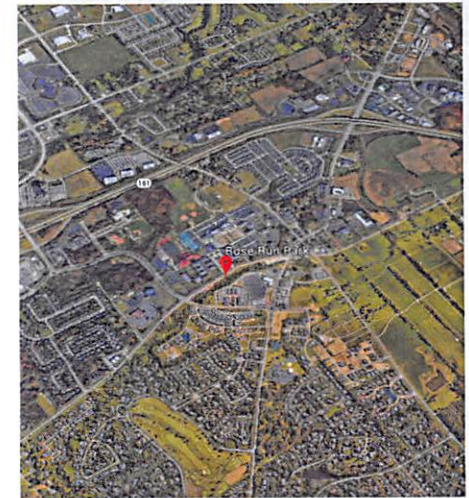
Mrs. Lindsay Slanec  
slanec.1@napls.us

# ROSE RUN PARK



ROSE RUN  
ORGANIZATION  
NAIS 6th grade student group  
NatGeo Inquiry Project  
Brochure designed by Sophia Tryon

# PARK SITE





# PRESENTATION AND OBSTACLES

---



## Proposed Obstacles

Cargo Net

Treehouse

Stream Crossings

Zip Line

Tire Swing

Cargo Line Treehouse

Introduction

Purpose

INaturalist

Metro Park visits

Metro Park data

Community survey

Topographic Map

Tinkercad

Natural play obstacle designs

Conclusion

<https://www.youtube.com/watch?v=ZX6Kn249kl4&t=6s>



## ROSE RUN PARK STUDENT DATA RESULTS

Compiled by 6<sup>th</sup> graders at NAIS

Rose Run Nature Based Play Element Research Group

After visiting 3 Metro Park Play area and rating each nature-based play elements, our data supported the building of these designs:

Cargo Net

Tree House

Zipline

River

Tire Swing

Cargo-Line Treehouse

## ROSE RUN PARK COMMUNITY SURVEY RESULTS

**Did you know the city was building a nature-based play area as part of the Rose Run Park?**

50.3% No

49.7% Yes

**How old are you?**

0 - 5 years old 2%

6-10 years old 11.1%

11-15 years old. 7.2%

16-19 years old 0.7%

20-30 years old 1.3%

31-40 years old. 29.4%

41-50 years old. 39.2%

51-60 years old. 7.2%

60 + years old. 2%

**Would you like to play in the nature-based play area in New Albany?**

Yes. 83.7%

No. 16.3%

**Which factor is most important for designing a nature-based play area, in your opinion?**

Safety. 25.5%. 39 people

Fun. 43.1%. 66 people

Natural 31.4% 48 people

**Would you like to explain why?** 74 responses

I think it will honor the integrity of the project for what the city is trying to design and provide for the community. It is also a unique and cool idea.

Security must be top notch and un-compromised

I really think all 3 factors are important but I went with "Natural Experience" because it should be differentiated from a standard playground to be a Natural Play Area. I trust that safety will be taken into consideration and am sure that it will be fun :).

I think we all need more access to nature. Studies show access to nature is beneficial to health and well-being. A modern city like New Albany with nature at its core would send a powerful message to everyone who visits the new park.

My children are 2 and 5 so anything safe for young children would be my first priority.

It's not fun for anyone if you have to keep telling your kids to be careful.

Ability to use imagination

City sponsored parks, besides school playgrounds, are limited in New Albany. Creating a fun play area for children will be very beneficial. Parents and kids can determine what challenges are to difficult. If safety becomes the most important consideration for the natural play area the enjoyment may be limited.

While fun and Natural experience is important, I think that safety is of the highest priority.

I like to be outside to play on fun equipment

Creating something different than just another metal "jungle gym" that is tied to the natural surroundings would be an excellent complement to the exciting natural space being created. It should be fun and safe too!

If it's not fun then there is no point in building it.

Children learn and thrive in natural environments with freedom to play and explore their curiosity. The play area at Blendon has been an amazing addition to Blendon Woods and I look forward to the play area that fits inside Rose Run.

Using nature to play is what we do not have enough of in NA, there's plenty of playgrounds.

There will be lots of kids who want to visit the park

Having fun on outdoor equipment with my friends is good exercise

So my kids have somewhere fun to hang out and play

I think safety is important because you want to have fun, but at the same time you want to be safe. There will be toddlers/younger kids at the park, maybe even infants and you want them to be safe. Also elderly people, or kids that are disabled or that have disabilities.



No

There are plenty of typical playground options in the area. Creating an area using natural elements in a creative way will inspire kids to explore and interact with their surroundings. Children today do not spend enough time outdoors relying on their imaginations and curiosity.

I like to feel at ease when my kids are playing

My daughter loves the natural play area at Blendon Woods. I think safety is most important, then fun.

If its not fun who cares if it's a natural experience

Would like it to be more fun than overly "lawyer" safe.

It's important to incorporate natural elements in the surroundings into play for the kiddos so that they gain exposure and appreciation of nature and its value. A butterfly/pollinator garden would be an awesome addition!

I would like it to be a place that all children and adults could play no matter their ability. So, having equipment that children with special needs can play on with others their age or with their parents would be great.

We have many really nice play areas that were thoughtfully planned throughout New Albany. Now we need some 'Central Park-like' environments for residents of all ages to enjoy.

Fun is always going to be of upmost importance in designing a playground. The nature area at Blendon Woods with the zip line is a great example!

Sometimes the natural element play areas aren't very fun. Its important to be active with zip lines and climbing walls so it's fun for all ages

A fun and natural experience can be created with a focus on safety at a 'must have'

Play is fun

My kids are 5 and 8, and I would love for them to explore nature while having fun. Blendon Woods play area is a great example of using nature to build a playground.

I have young children ages 1-4 and want to make sure that it's safe for them while also being fun.

Sometimes playgrounds are safe but boring. And sometimes they are cool looking but boring. Please have equipment that is fun to play on.

Safety first :)

Fun would bring folks, safety would keep folks to return!

It needs to be fun so that adults, teens and kids want to go there often. If it's just a natural experience, people will do it once but not continue to use it. It needs the fun component to keep them coming back.

Kids get hurt on playground equipment all the time at school. I would like to see a splash pad similar to the one at Disney springs that's lights up at night. There's also cool interactive water features in downtown Chicago that would be fun to replicate here.

If it's not fun, no one will play there.

unfortunately we often don't enjoy the outdoors anymore

We love the Natural play area at Blendon Woods and Sharon woods. Good luck!

Because we need more parks in our community that also take into account the impact on the environment; we can also educate kids about the environment in the park

My children ages 9 and 6 would be the ones playing in the park. I would like some play elements that hold their interest so they can spend lots of time in the park with each other, their friends and family, etc. Thanks!

Kids should want to play on naturally made pieces and it can look exciting and inviting

Because we need to be aware of poison ivy (and have fun)

My kids judge going to parks based on the fun factor and trails to ride bikes  
Don't lose character of area. Needs to be authentic. Too much artificiality in today's world.  
Don't concentrate so much on safety that the project loses all sense of worth. Take risks. Look at what other urban areas around the country have done. Don't be so provincial.

Natural is more fun and provides learning for children

Not enough outside things to do for children in New Albany especially at the parks

New Albany continues to take down forests and trees throughout our area. It is very sad. My kids talk about it all the time. I would like to see the majority of the woods remain and have play structures nestled among it.

I have 3 small boys. They love to run, climb, jump and explore. They need more than a walking path. I believe a great nature based play area would be a combination of the items available at Blendon Woods, Gahanna Woodside Green South and Scioto Audubon. A park they can "do" and be active would be amazing.

If it's not fun, nobody will play there.

Because you don't want to get hurt and go to the emergency room.

Worried about kids near water or hidden in woods where they can't be watched by adults.

I like to play on trails in the woods and climb on rocks and in tree houses or platforms in the woods. I went to pigeon roost farm & they had a fun nature trail area they even had a ninja warrior course

It needs to be safe so no one gets hurt.

You could fall down if it is not safe.

Because play should be fun and we would enjoy it with our children!

Want it to be an area where my children will want to play again and again

I love to exercise outdoors and would appreciate having safe equipment

Love having fun with my kids

Want a first class good experience

We don't have much opportunity to interact & explore in nature in the suburbs.

The new Blendon Woods nature area is fantastic, something like this in NA would be great.

Honestly... safety is first. I don't think anyone wants a play area that is not safe. My kids are really hoping it's fun though and not just park benches, etc

It needs to be fun or people won't use it!

Safety, Fun and Natural experience are all important to this development.

Safety is always important when it comes to equipment for children to play on. I absolutely want it to be fun, but it must be safe.

Ideally, use sustainable materials and nothing too prohibitive based on age. It would be great to have signs even that tell us the trees and plants names. Can you incorporate materials that need little maintenance? Maybe a scavenger hunt, too (items to find in the park)!

getting in touch with nature is key to learning and supporting the environment

It will be nice to have a fun area for kids to play and families to gather close to downtown NA

If you want people to use it, it needs to be fun!

My kids love the natural play area at Blendon Woods

**Would you like STICKS to make forts in your play area?**

Yes. 51%

No. 25.5%

Maybe. 23.5%

**Would you like a Treehouse?**

Yes. 82.4%

No. 9.2%

Maybe. 8.5%

**Would you like a Log Crossing?**

Yes. 78.4%

No. 11.8%

Maybe. 9.8%

**Would you like a Log Bench?**

Yes. 67.1%

No. 11.4%

Maybe. 21.5%

**Would you like an Inclined Log?**

Yes. 75%

No. 11.8%

Maybe. 13.2%

**Would you like a Zip Line?**

Yes. 81.6%

No. 8.6%

Maybe. 9.9%

**Would you like Logs to build with?**

Yes. 49.3%

No. 23%

Maybe. 27.6%

**Would you like a Tic-Tac-Toe stump?**

Yes. 61.8%

No. 21.1%

Maybe. 17.1%

**Would you like a Cargo Net?**

Yes. 77.1%

No. 10.5%

Maybe. 12.4%

**Would you like a Log Train?**

Yes. 41.2%

No. 33.3%

Maybe. 25.5%

**Would you like a Teeter-Totter?**

Yes. 70.6%

No. 16.3%

Maybe. 13.1%

**Would you like a Tetherball?**

Yes. 54.2%

No. 28.8%

Maybe. 17%

**Would you like a Tire Swing?**

Yes. 82.4%

No. 10.5%

Maybe. 7.2%

**Would you like a Rope Walk?**

Yes. 82.4%

No. 6.5%

Maybe. 11.1%

**Would you like a Concrete Bridge across the creek?**

Yes. 72.5%

No. 11.8%

Maybe. 15.7%

**Would you like just an Open Area that was ok to play in with no changes?**

Yes. 45.1%

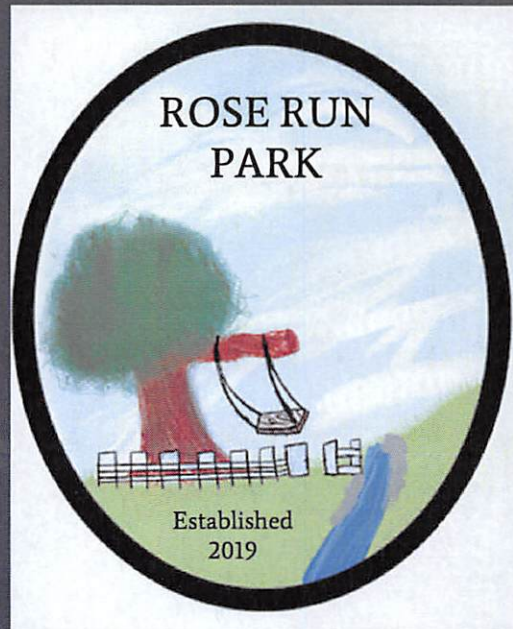
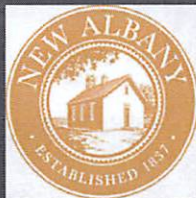
No. 32.7%

Maybe. 22.2%



# Rose Run Park

...



How can we design safe play equipment for the  
new Rose Run Park that allows people of all ages  
to have a fun experience in nature?

...



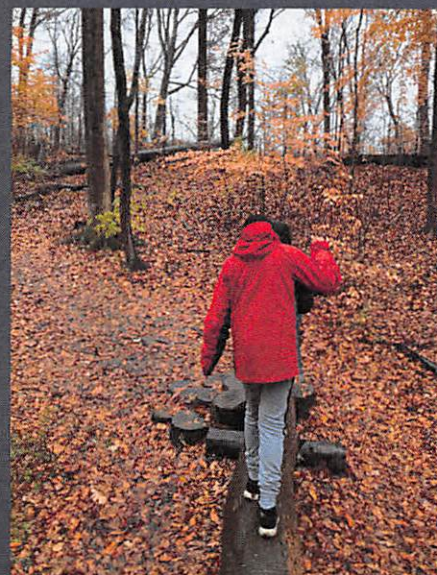
## iNaturalist

- BioBlitz
- 83 acres
- Our goal
- 1,200 students
- 4,352 observations
- 673 species identified



## Blendon Woods Metro Park

- Cargo net and tire swing
- Zip line
- Log crossing
- Tic tac toe stump
- Teeter totter and tether ball
- Wood train





## Innis Woods Metro Parks

- Concrete bridge
- Tree house
- Play Garden




## Sharon Woods

- Open play area
- Log crossing
- River





# Data Sheet

Name <u>Bella</u>		Playground <u>Blendon Woods</u>	
	Age 0-5 <input type="checkbox"/> 6-10 <input checked="" type="checkbox"/> 11-15 <input checked="" type="checkbox"/> 20-30 <input checked="" type="checkbox"/> 31-40 <input checked="" type="checkbox"/> 41-50 <input type="checkbox"/> 51-60 <input type="checkbox"/> 60+ <input type="checkbox"/>	Safety Absolutely <input type="checkbox"/> Kind Of <input checked="" type="checkbox"/> Not At All <input type="checkbox"/>	Fun Absolutely <input checked="" type="checkbox"/> Not At All <input type="checkbox"/> Kind of <input type="checkbox"/>
	Natural What part of the play area is natural? <u>is natural?</u> What Materials were used?		
Zip line			
Notes <u>I went this in Zee Ren!</u>    	Explain <u>Many people my age</u> <u>enjoyed it, I also made</u> <u>friends and played with</u> <u>adults whilst saying it</u> <u>it would be hard for</u> <u>a 6-5 year old to hold</u> <u>on tight and couldn't</u> <u>understand</u>	Explain <u>Unless someone</u> <u>decided to randomly</u> <u>let go of the wire,</u> <u>there is no safety</u> <u>concerning you mind</u> <u>on and a red cord</u> <u>you sit on the cord</u>	Explain <u>I found</u> <u>the zip line!</u> <u>it was fun</u> <u>to ride on</u> <u>and I enjoyed</u> <u>it.</u>
Overall Ratings 1 2 3 4 5 6 7 8 9 10 <input type="checkbox"/> <input type="checkbox"/> <input type="checkbox"/> <input type="checkbox"/> <input type="checkbox"/> <input type="checkbox"/> <input type="checkbox"/> <input type="checkbox"/> <input type="checkbox"/> <input checked="" type="checkbox"/>			

We completed a data sheet for each obstacle, then combined our results.

## Student Data Top 10 Play Obstacles

## 1st Zipline

## 6th Concrete Bridge

## 2nd Tetherball

## 7th Tire Swing

### 3rd Cargo Net

## 8th Teeter Totter

## 4th Treehouse

## 9th Rope Walk

## 5th Log Crossing

## 10th Tic Tac Toe Stump

## Why?

We made the community survey so that we could get their thoughts on our ideas. So, therefore we can make a playground that we know the community will play on and enjoy.

## Participants

There were 153 responses to the Community Survey.



## Community Survey Results

#1 chosen obstacle	zipline	84.2%
#2 chosen obstacle	rope walk	82.8%
#3 chosen obstacle	tire swing	82.1%
#4 chosen obstacle	treehouse	81.3%

## Topo Map

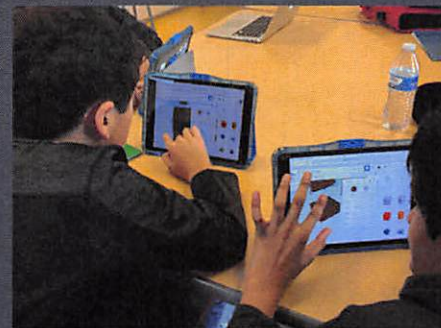




# Park Maps



# TinkerCAD





## OUR SUGGESTED NATURE BASED PLAY ELEMENT DESIGNS

CARGO NET

TREEHOUSE

STREAM CROSSING

ZIP LINE

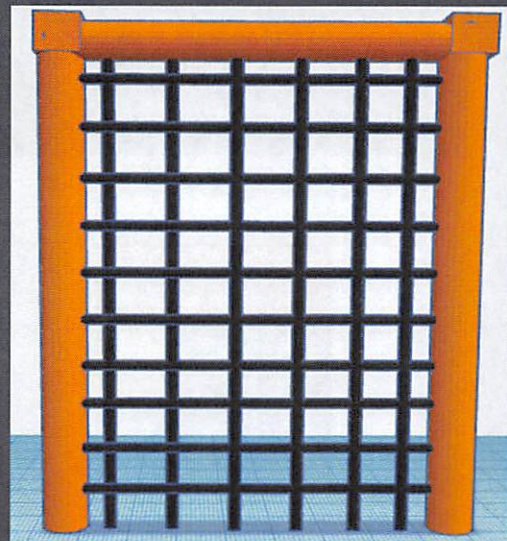
TIRE SWING

CARGO-LINE TREEHOUSE

### Cargo Net



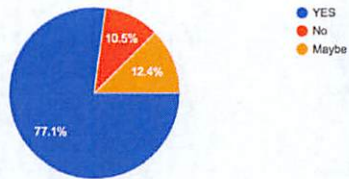
- Sixth most popular play element
- Inspires imagination
- Constructed from natural resources





Would you like a CARGO NET?

153 responses



## Community Survey

- 77.6% of people said yes

## Placement

- Does not depend on physical land features
- Can be placed anywhere with open uncovered land

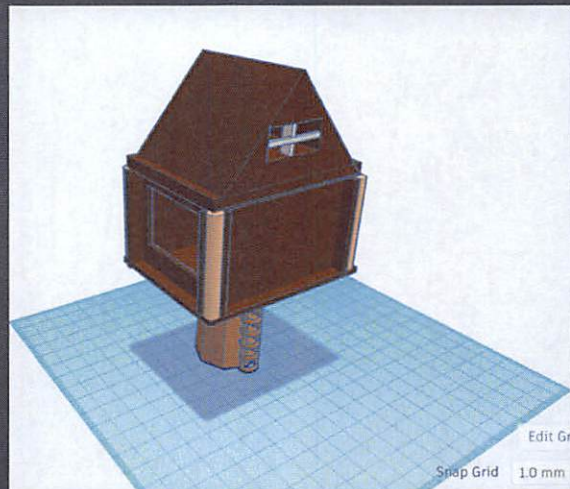
## Safety

- Safe height
- Stable support beams

## Treehouse



- We started bottom-up
- We made a easy to use ladder
- Triangular prism roof
- Two Windows on base
- Two windows on roof
- Pillars to support the roof





## Our Reasoning, Safety, and Nature

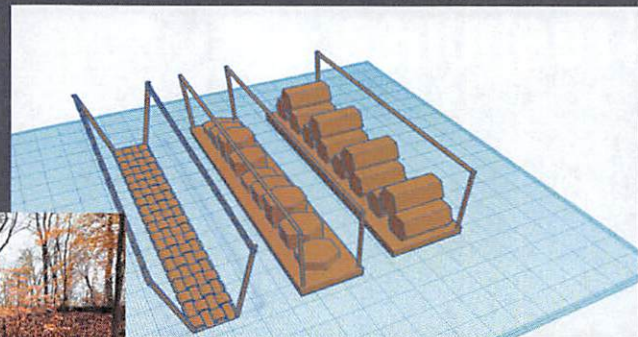
- 81.3% of the community voted for a treehouse
- Our data sheet gave it a 8/10
- Recommend ages 6-40
- Deemed to be moderately safe
- Mostly built with natural elements
- Artificial Tree
- Good viewpoint
- Needs to be far from the river

<https://youtu.be/O49eHYgFl4s>

## Stream Crossing



- Safe, Fun, and Natural

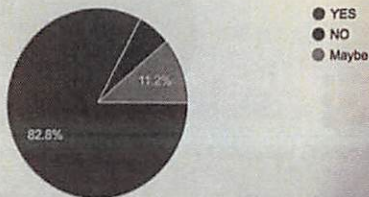


Link to video

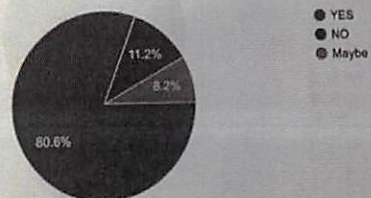


## Community Survey Data

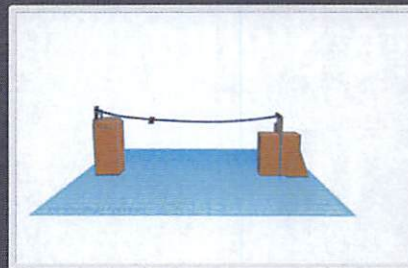
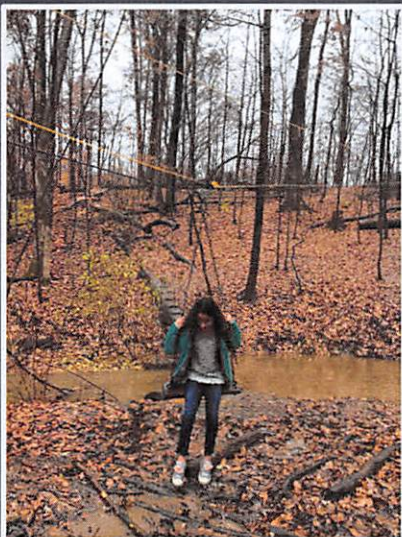
Would you like a ROPE WALK?  
134 responses



Log Crossing  
134 responses

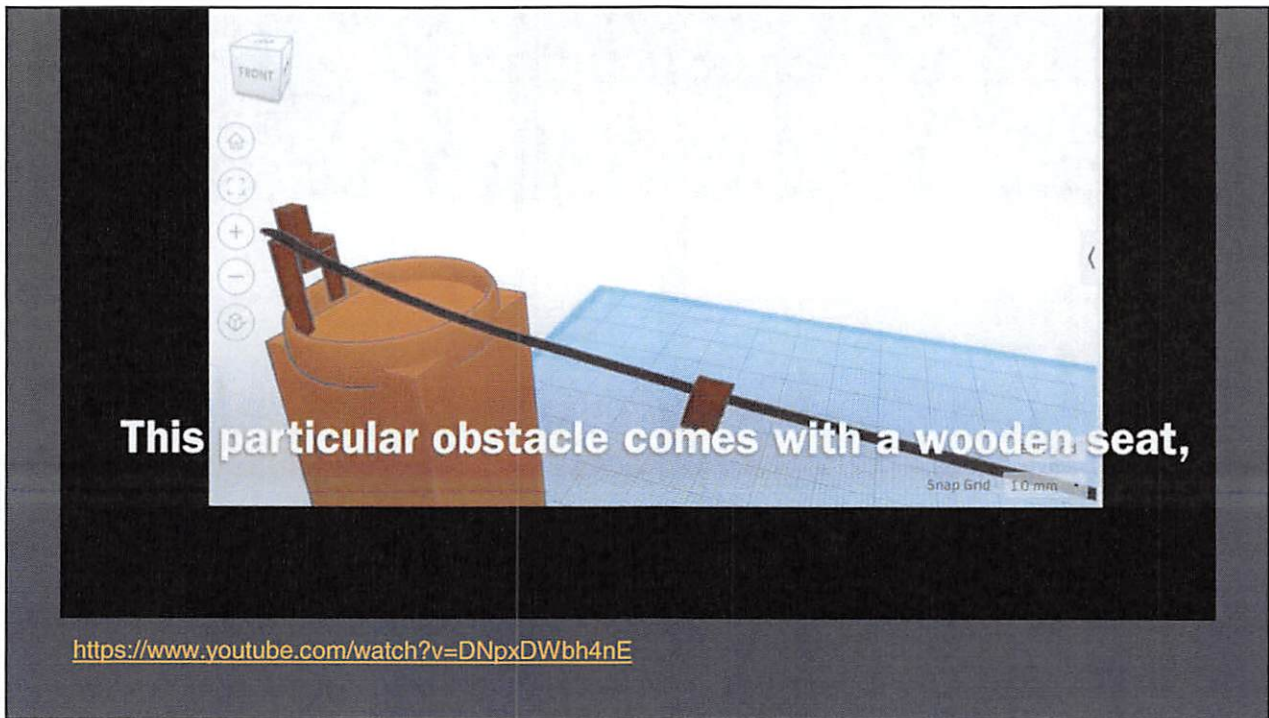


## Zipline

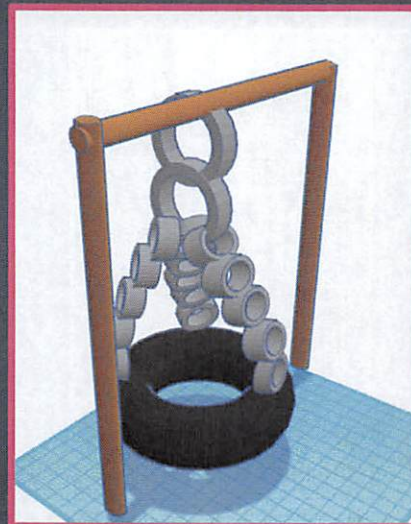


- Number one choice
- Placement
- Inspiration
- Our design

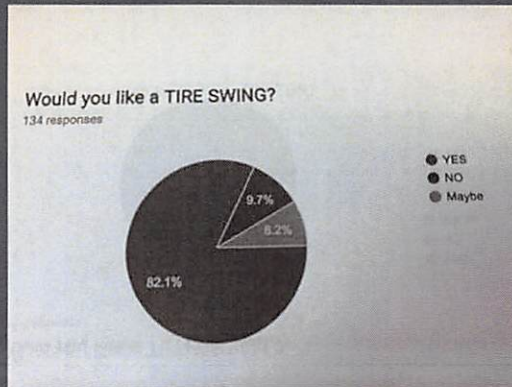




## Tire Swing



## Community Survey Results



82 percent of citizens were interested in a tire swing

## Geography

The only requirement for the tire swings placement is the land needs to be flat.

This means that there doesn't need to be an exact placement

<https://youtu.be/puxJm-VV6VA>

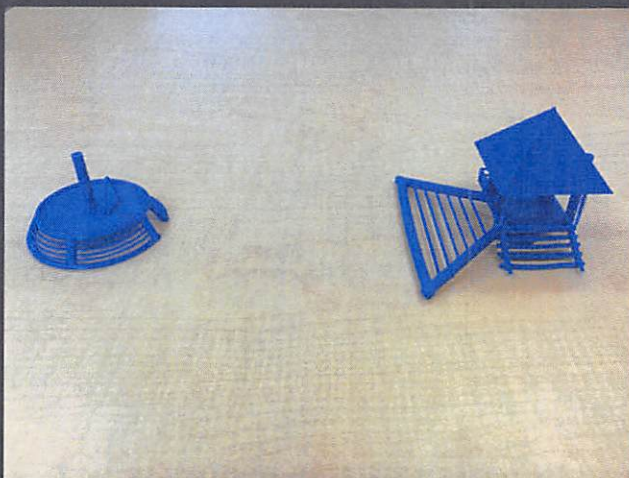
Imagine...



“Don’t lose judge of  
character. Needs to be  
authentic... Take risks.”

- Anonymous

## The Cargo-Line Treehouse



[https://youtu.be/g4FtzeHU\\_Pc](https://youtu.be/g4FtzeHU_Pc)

**Thank you**

...

We deeply appreciate your time.