



NEW ALBANY

PARKS FRAMEWORK PLAN

CITY COUNCIL RETREAT

September 11, 2020

BACKGROUND

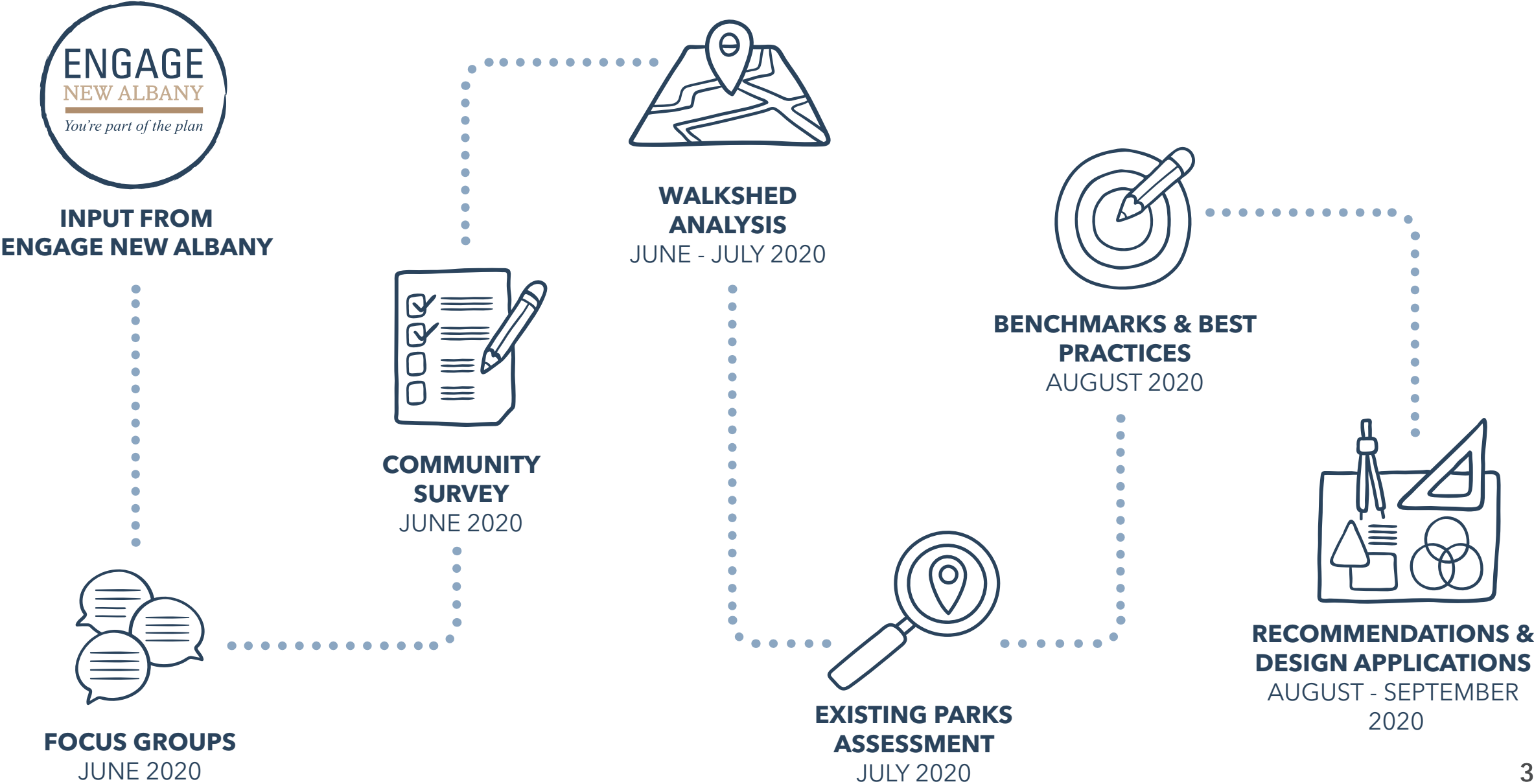
WHY A PARKS PLAN?

- **Engage New Albany** highlighted the **need for the existing New Albany public parks to be examined and studied** for potential improvements.
- Agreements with subdivision HOAs mandate **neighborhood parks be reassigned to City ownership 20-25 years post-construction.**

PLAN OUTCOMES

- Park system hierarchy
- Park improvement strategy
- Order of magnitude costs

OUR PROCESS



COMMUNITY OUTREACH OUTCOMES

731

Engage New Albany parks-related
community comments or answers to
survey questions

443

community survey responses

2

focus group meetings via Zoom

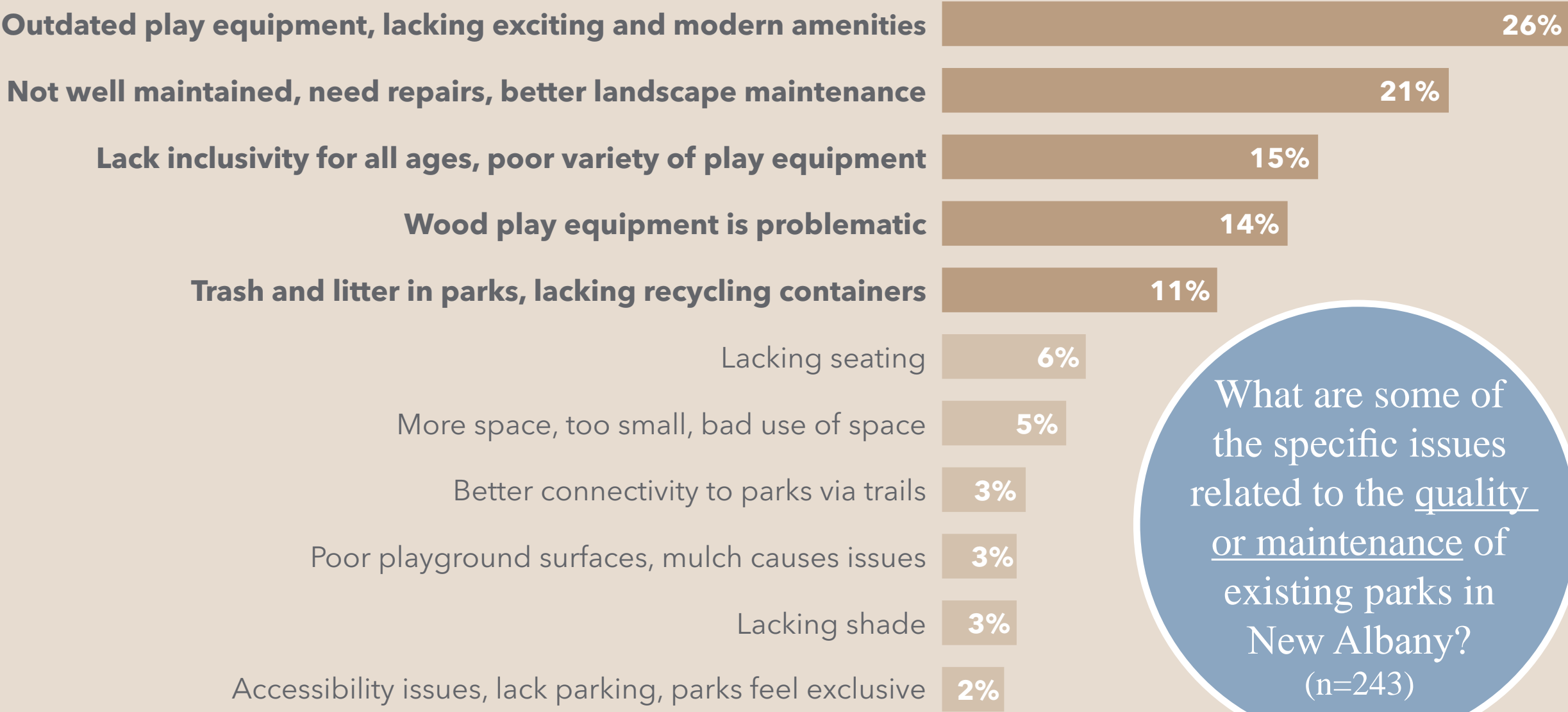
84%

of community survey respondents agree
that **parks** are very important to the
overall quality of life in New Albany

76%

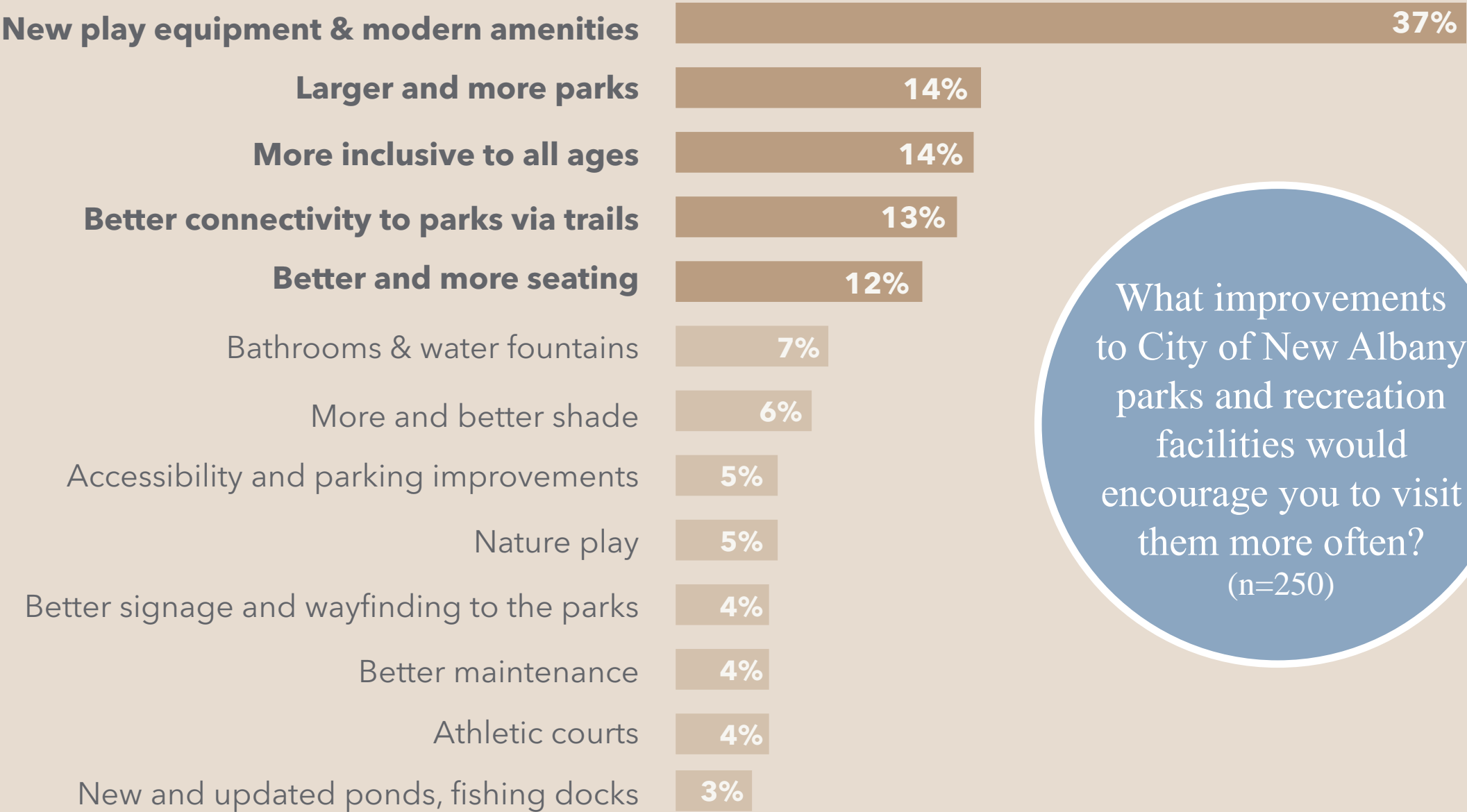
of community survey respondents
agree that **natural open space** is very
important to the overall quality of life in
New Albany

COMMUNITY OUTREACH OUTCOMES | COMMUNITY SURVEY (Q6)



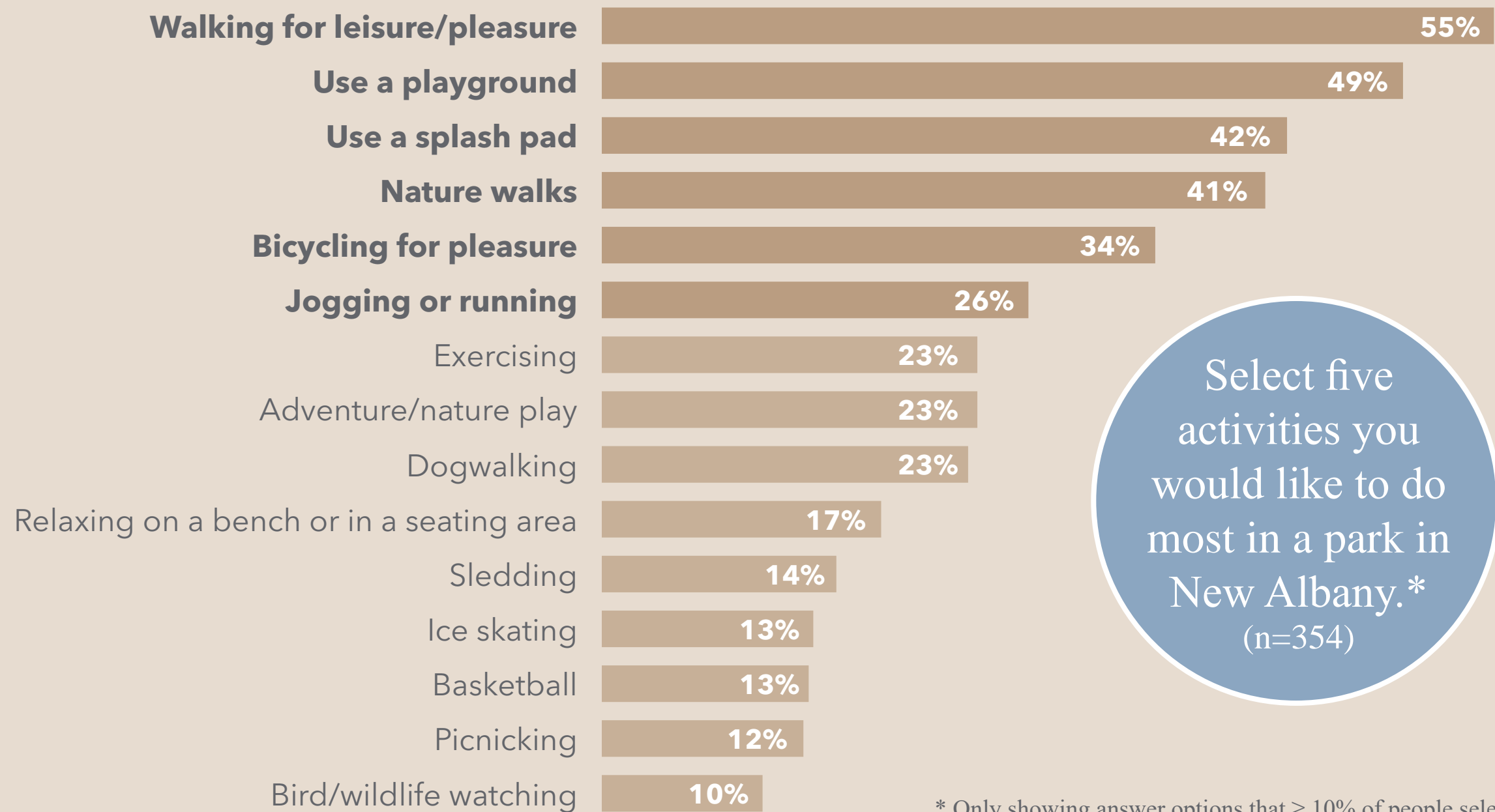
What are some of the specific issues related to the quality or maintenance of existing parks in New Albany?
(n=243)

COMMUNITY OUTREACH OUTCOMES | COMMUNITY SURVEY (Q9)



What improvements to City of New Albany parks and recreation facilities would encourage you to visit them more often?
(n=250)

COMMUNITY OUTREACH OUTCOMES | COMMUNITY SURVEY (Q12)



* Only showing answer options that ≥ 10% of people selected

COMMUNITY OUTREACH OUTCOMES | COMMON THEMES

ISSUES:

Lack of **creature comforts** (shade, seating, picnic tables)

Play equipment is **aging, lacks variety**, is **not accessible** for people with disabilities, **serves a limited age range (3-5 yo)**

Parks **do not feel welcoming** for all people, they **feel exclusive** to the neighborhoods where they are located

Lack of active recreation options in City parks (skate park, basketball courts)

Desire for special amenities in parks, but limited due to park sizes and lack of parking



Lack of Seating at Millbrook Farm Playground



Single Basketball Court at James River Road Park



Signage at Lambton Park



Wooden Playset at Scarlocken Green Playground

COMMUNITY OUTREACH OUTCOMES | COMMON THEMES

ISSUES:

Residents are **traveling to nearby communities to enjoy destination playgrounds** and parks that offer more variety and experiences for a wider age range



Hannah Park | Gahanna



Millstone Creek Park | Westerville



Wildwood Park | Granville



Friendship Park | Gahanna



Hanby Park | Westerville



Emerald Fields | Dublin

COMMUNITY OUTREACH OUTCOMES | COMMON THEMES

OPPORTUNITIES:

Enhance and upgrade neighborhood parks

- Play equipment for broad age range
- Accessibility and inclusive play
- Seating and gathering spaces for all
- More shade

Build a destination park so residents don't have to leave the community

Add **basketball courts and skate park** to provide active recreation for teens

Complete leisure trail connections

Enhance mid-size parks with more amenities



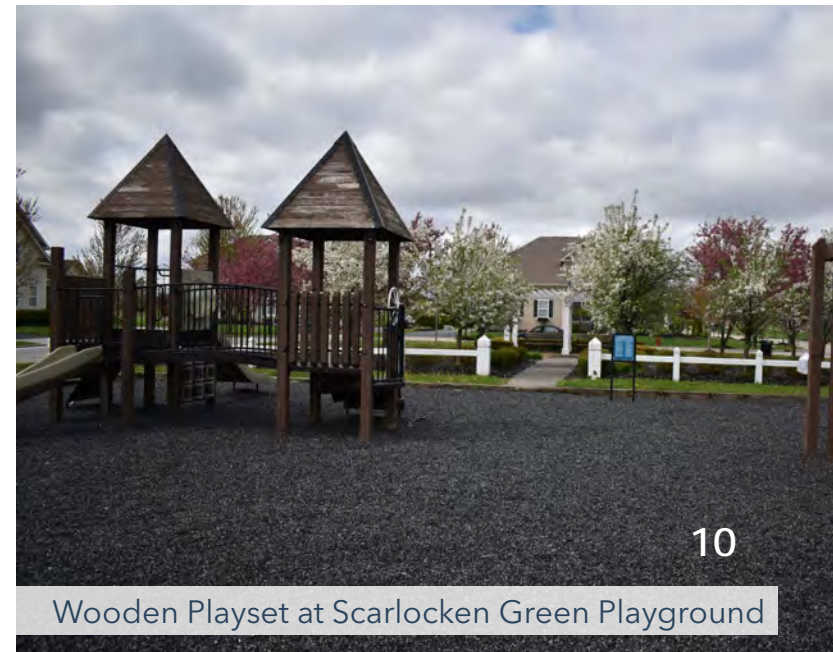
Play Equipment at Byington Park



Aging seating at Lambton Park



Signage at Lambton Park



Wooden Playset at Scarlocken Green Playground

WALKSHED ANALYSIS PROCESS & FINDINGS

OUR PROCESS:

Completed a 10-Minute Walkshed Analysis to determine:

- The percentage of residents within a 10-minute walk of a park
- The percentage of residents within a 10-minute walk of a trail
- The impact of partner park facilities on the amount of residents within a 10-minute walk of a park, which proved to be insignificant.
- The impact adding future parks and planned trails has on the amount of residents within a 10-minute walk of a park or trail.

Our results are shown to the right, and represent a snapshot of current and potential access.

To achieve positive impacts of trails for park walkshed, existing trail gaps need to be completed.

EXISTING PARKS

53%

of New Albany Residents
are within a 10-Minute
Walk of a Park

EXISTING PARKS

6,109

New Albany Residents
are within a 10-Minute
Walk of a Park

EXISTING TRAILS

86%

86% of New Albany
Residents are within a
10-Minute Walk of a Leisure
Trail (9,877 residents)

FUTURE PARKS

65%

of New Albany Residents
will be within a 10-Minute
Walk of a Park if 5 new
parks are built

FUTURE PARKS

7,511

of New Albany Residents
will be within a 10-Minute
Walk of a Park if 5 new
parks are built

FUTURE TRAILS

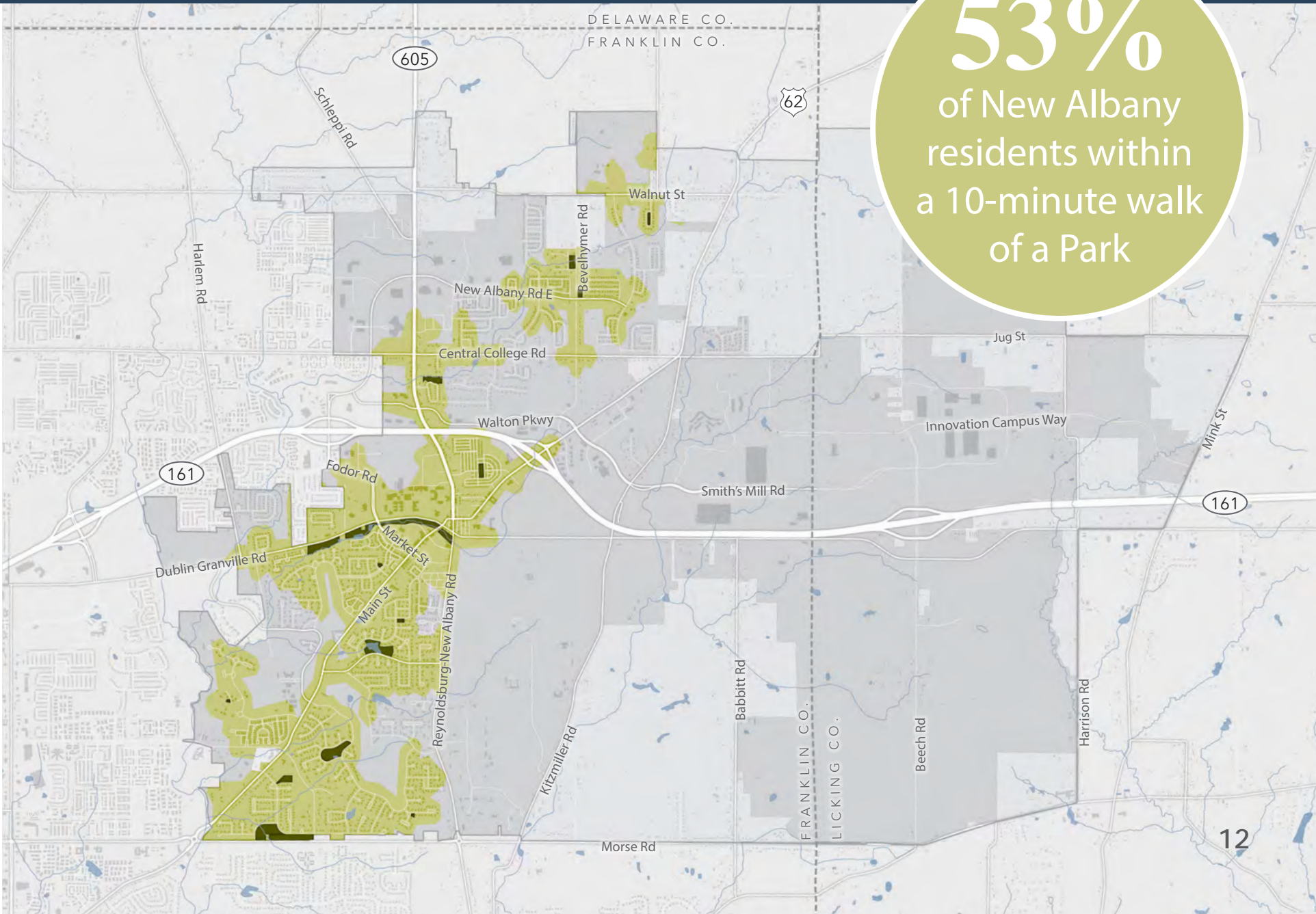
93%

of New Albany Residents
will be within a 10-Minute
Walk of a trail if planned
trails are built (an addition
of 804 residents)

WALKSHED ANALYSIS FINDINGS

LEGEND

- Existing City Parks (with public access)
- 10-minute Park Walkshed
- Corporate Boundary
- Study Area Boundary
- Rivers & Streams

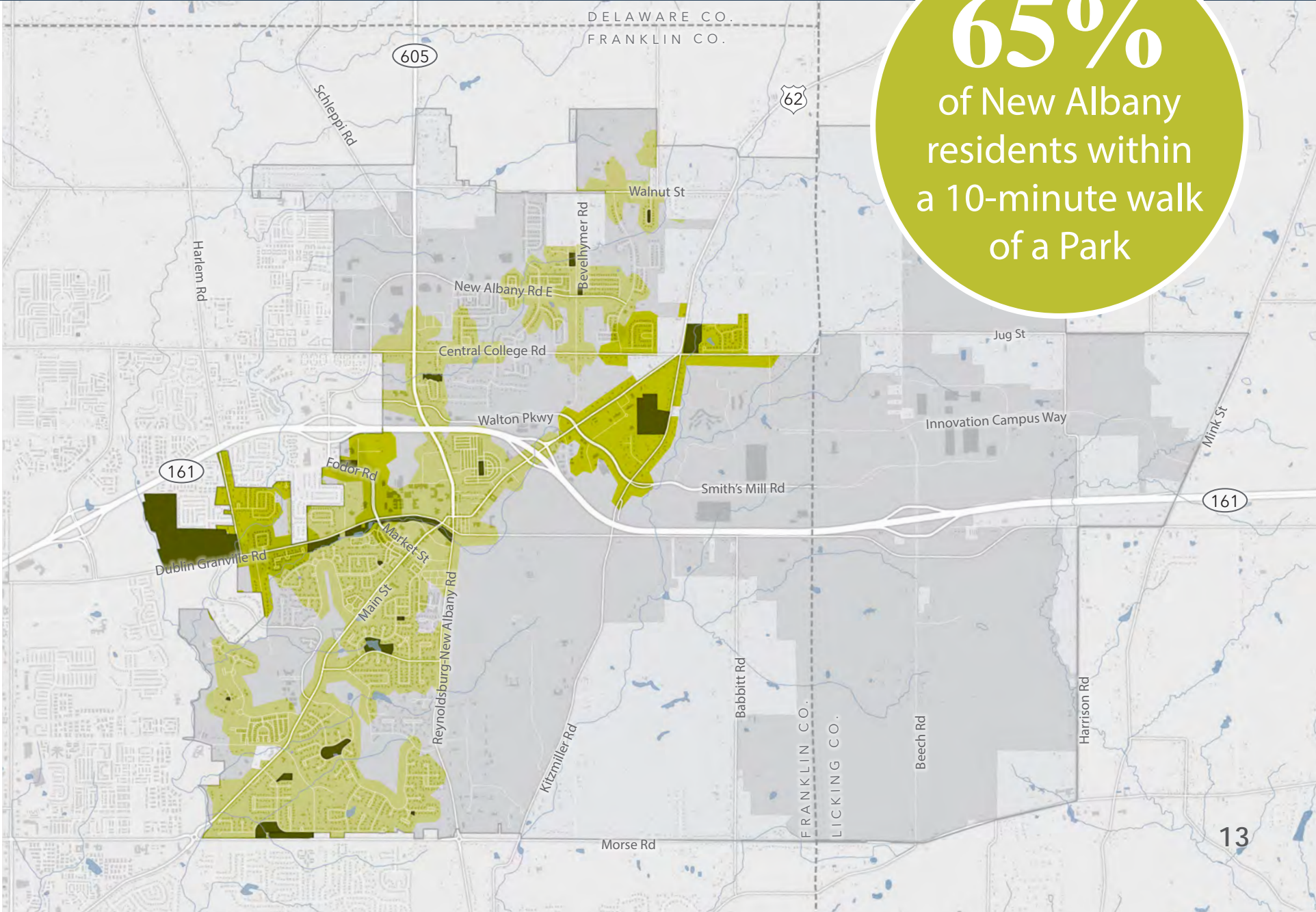


53%
of New Albany
residents within
a 10-minute walk
of a Park

WALKSHED ANALYSIS FINDINGS

LEGEND

- Existing and Future City Parks
- Existing 10-minute Park Walkshed
- Future 10-minute Park Walkshed
- Corporate Boundary
- Study Area Boundary
- Rivers & Streams

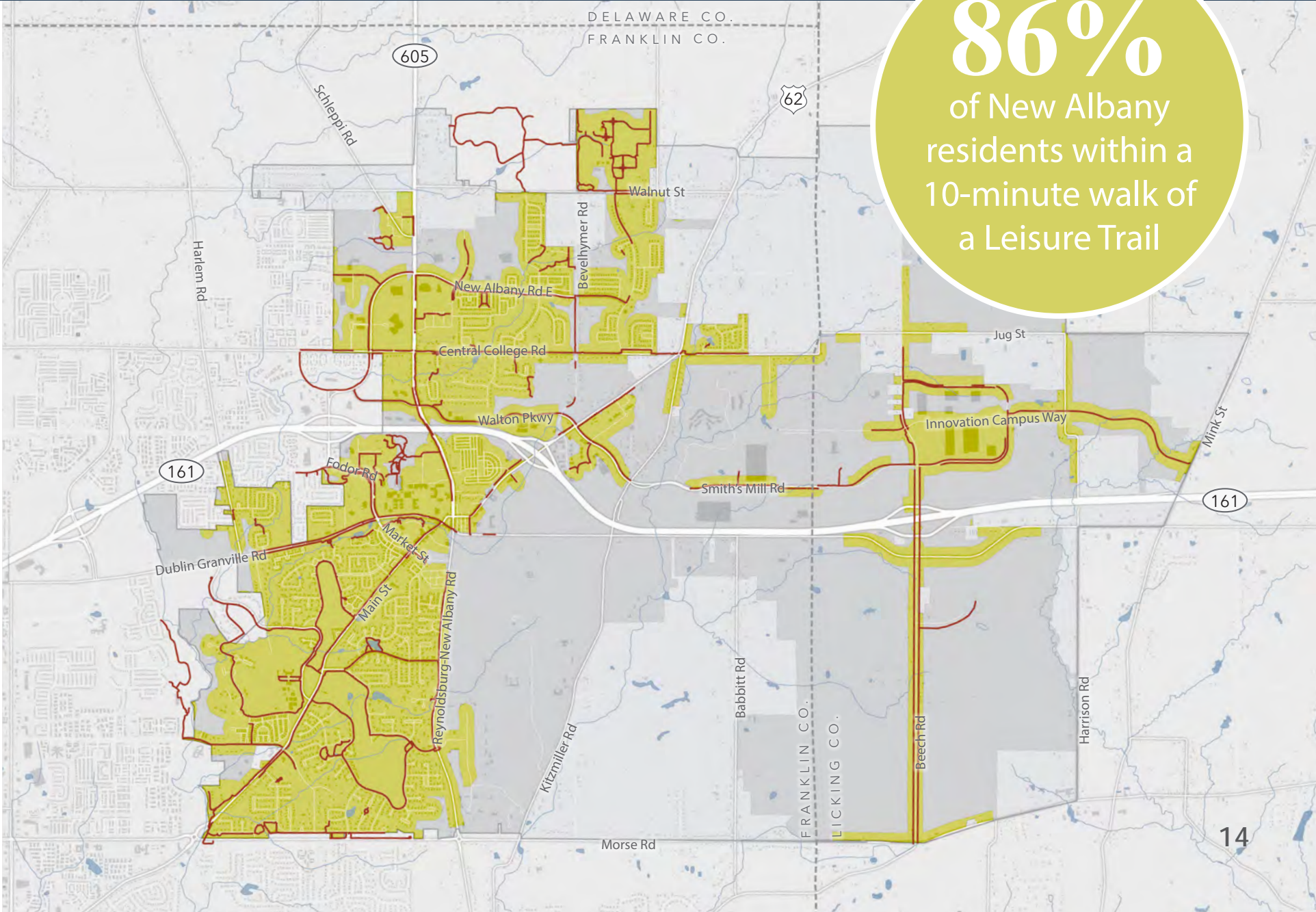


65%
of New Albany
residents within
a 10-minute walk
of a Park

WALKSHED ANALYSIS FINDINGS

LEGEND

- Existing Leisure Trails
- Existing 10-minute Leisure Trail Walkshed
- Corporate Boundary
- Study Area Boundary
- Rivers & Streams



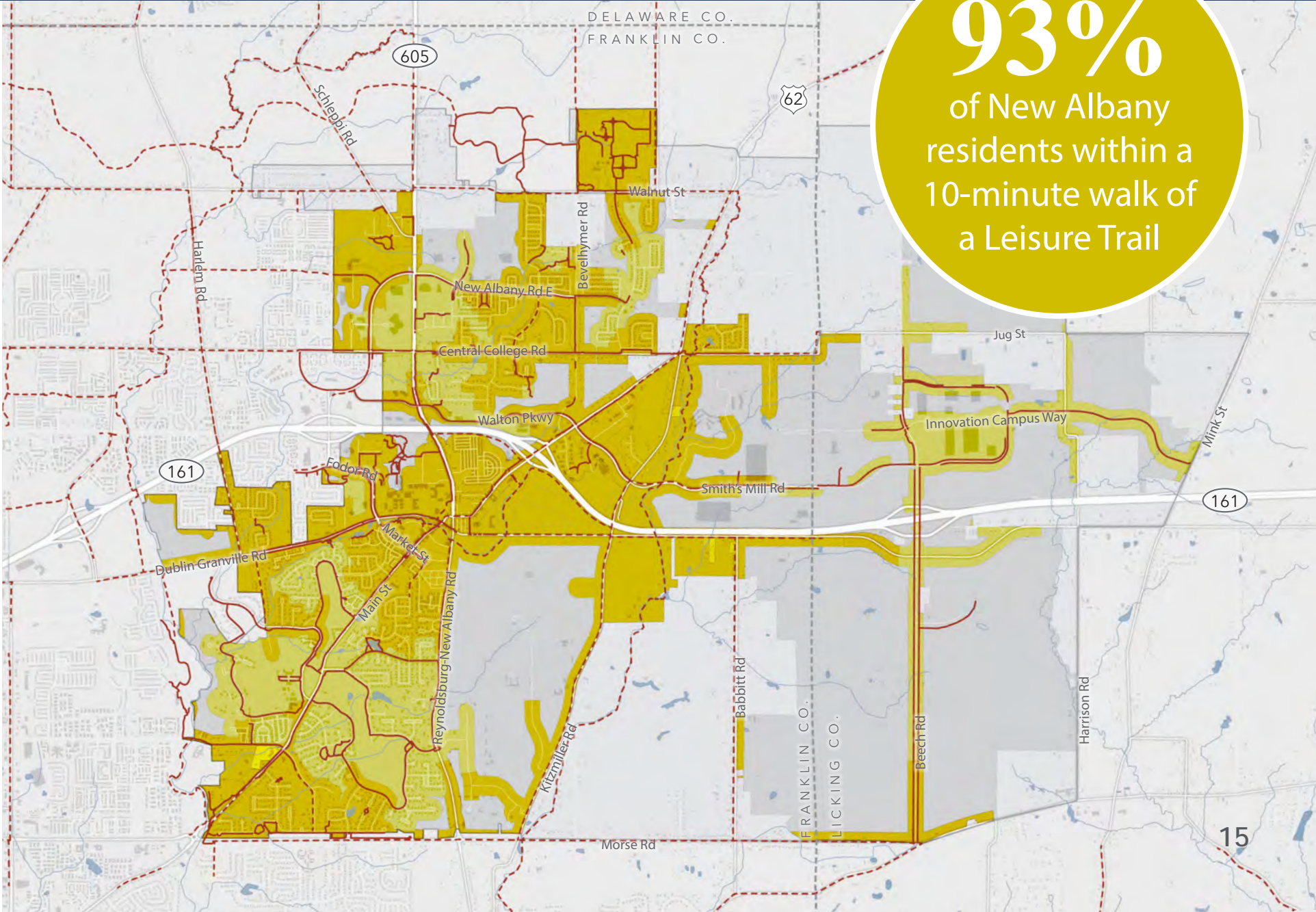
86%

of New Albany
residents within a
10-minute walk of
a Leisure Trail

WALKSHED ANALYSIS FINDINGS

LEGEND

- Existing Leisure Trails
- Future Leisure Trails
- Existing 10-minute Leisure Trail Walkshed
- Future 10-minute Leisure Trail Walkshed
- Corporate Boundary
- Study Area Boundary
- Rivers & Streams



EXISTING PARKS ASSESSMENT

1. What park amenities does the City have now and what is their current condition?
2. What are the deficits within the current park offerings?



EXISTING PARK ASSESSMENT

	Park	Size (acres)	Transfer Date	Amenities
1	Scarlocken Green Playground	1.20	—	play equipment, swing set, pavilion, open green space
2	Millbrook Farm Playground	0.50	—	play equipment, swing set, open green space
3	Sumption Drive Playground	0.85	8/8/2020	play equipment, swing set, open green space
4	The Enclave Playground	0.75	—	play equipment, swing set
5	Windsor Playground	2.10	8/3/2024	play equipment, swing set, pavilion
6	North of Woods Playground	0.30	12/15/2022	play equipment, swing set
7	Upper Fenway Playground	0.30	—	play equipment, swing set, open green space
8	Ebrington Playground	0.40	—	play equipment, swing set
9	Lambton Green Playground	3.00	10/12/2020	play equipment, swing set, open green space
10	Planters Grove Playground	1.30	8/12/2011	play equipment, swing set, open green space
11	Tiverton Playground	0.25	—	no traditional play equipment, climbing bars, tire swing, picnic table
12	James River Road Playground	0.20	11/13/2014	play equipment, swing set, basketball court
13	Byington Park	6.10	—	linear open green space
14	James River Road Park	13.50	11/13/2014	very large, linear open green space
15	Lambton Park	3.40	7/17/2017	large central pond, open green space, leisure trails
16	Ratchford Fen's Park	7.80	11/26/2012	large central pond, leisure trails
17	Rose Run Park	8.00	—	leisure trails, Rose Run creek, nature play
18	Swickard Woods	8.70	—	open green space, Safety Town
19	Tidewater Park	3.00	12/13/2005	central pond with fountain, open green space



RECOMMENDATIONS + DESIGN APPLICATIONS

RECOMMENDATIONS: BIG PICTURE

1. Upgrade Neighborhood Playgrounds.

2. Enhance Neighborhood Parks.

3. Improve Access to Parkland Preserves.

4. Create Regional, All-Day Destination Parks.

PARK HIERARCHY



NEIGHBORHOOD PLAYGROUNDS

Hyperlocal parks anchored by playgrounds, but with comfortable amenities for residents of all ages.



NEIGHBORHOOD PARKS

Parks nestled in neighborhoods that provide community-wide benefits and distinctive recreation amenities.



PARKLAND PRESERVES

Preserved areas that prioritize ecological conservation and provide an opportunity to connect with nature.



DESTINATION PARKS

Unique parks with a variety of amenities purposefully designed to bring people together from across the region to connect and play.

PARK HIERARCHY LOCATIONS

NEIGHBORHOOD PLAYGROUNDS



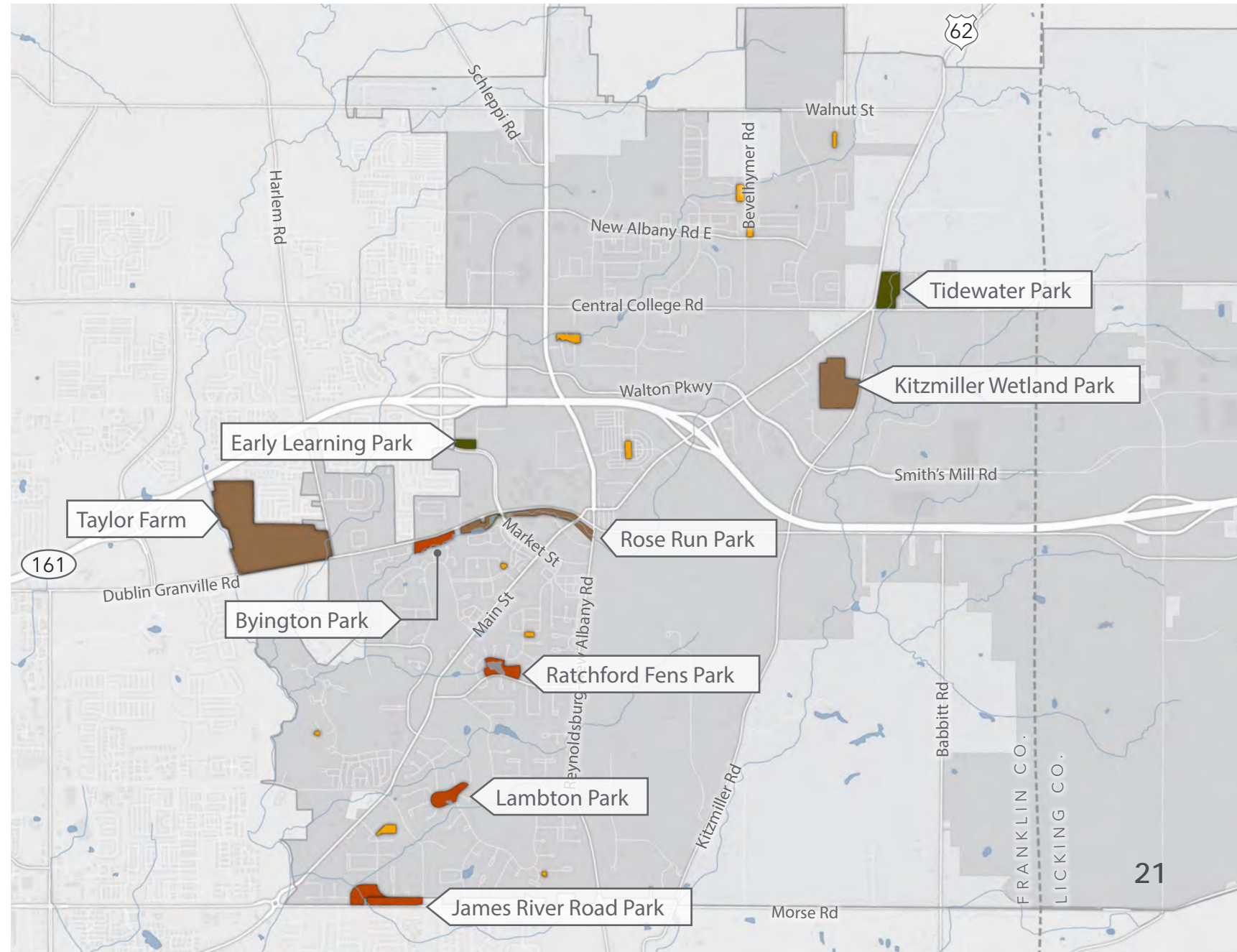
NEIGHBORHOOD PARKS



PARKLAND PRESERVE





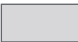

DESTINATION PARK

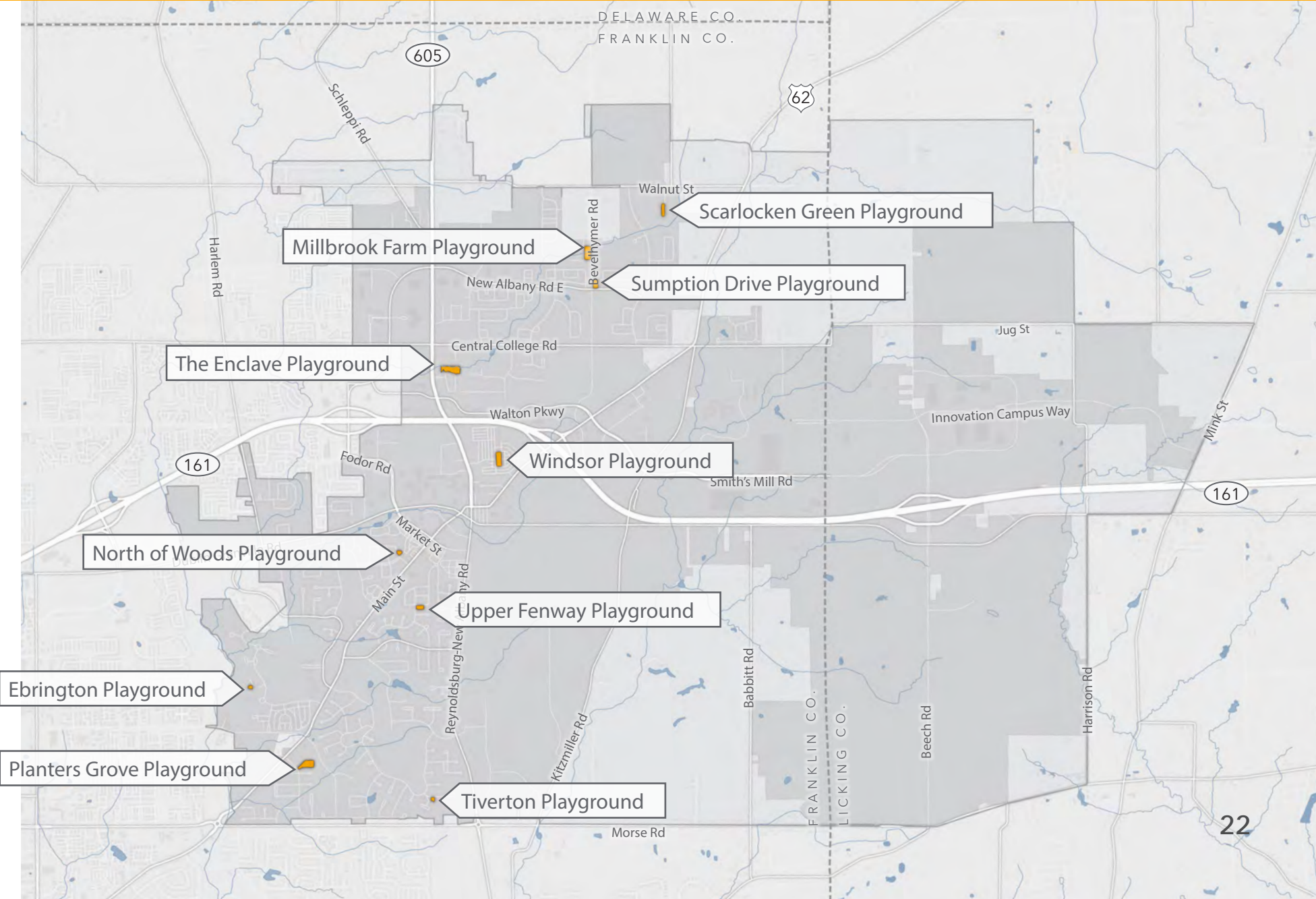


NEIGHBORHOOD PLAYGROUNDS | LOCATIONS



LEGEND

-  Neighborhood Playgrounds
-  Corporate Boundary
-  Study Area Boundary
-  Rivers & Streams



NEIGHBORHOOD PLAYGROUNDS | RECOMMENDATIONS



- Contemporary, innovative play equipment with material selection complementing New Albany's aesthetic
- Caters to younger children, but has amenities for all ages
- Adequate future open space dedication required within future development



Typical Existing Play Equipment Configuration



DEVELOP A NEIGHBORHOOD PLAYGROUND PLAYBOOK

Play Equipment

- Menu of pre-approved play equipment selections
 - » Appropriate scale
 - » Colors and finishes
 - » Mix of traditional play and nature play elements
- Provides variety for users and City oversight on aesthetics
- Appropriate play surfacing

Creature Comforts

- Seating
- Shade or shade structure
- Natural screening from adjacent residential

Awareness

- Community-wide understanding every park is for all

NEIGHBORHOOD PLAYGROUNDS | PROGRAM ELEMENTS



Contemporary Play with Rural Nod



Balance Skills



Upgraded Shade + Seating



Inclusive + Accessible Play



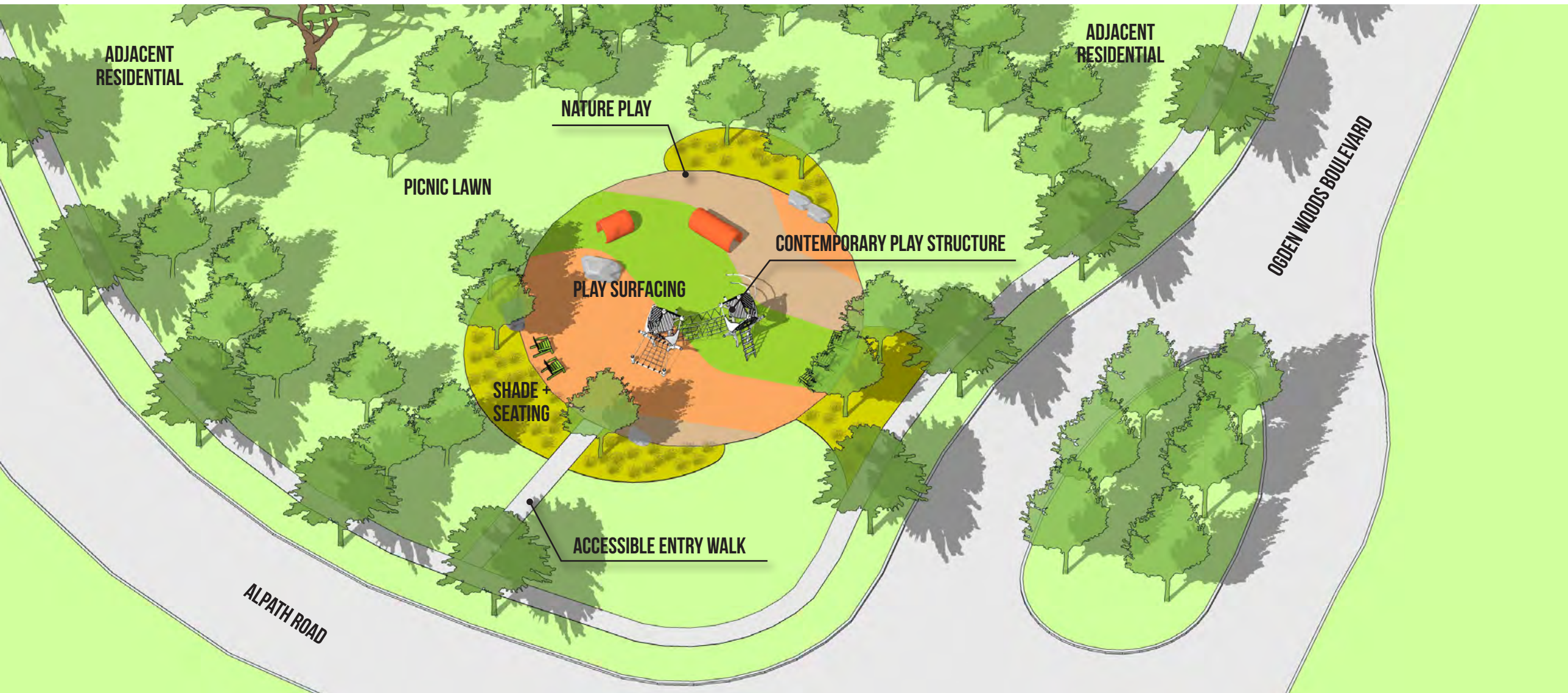
Small Gathering Spaces



Active Climbers + Slides

NEIGHBORHOOD PLAYGROUNDS | SAMPLE APPLICATION

NORTH OF WOODS

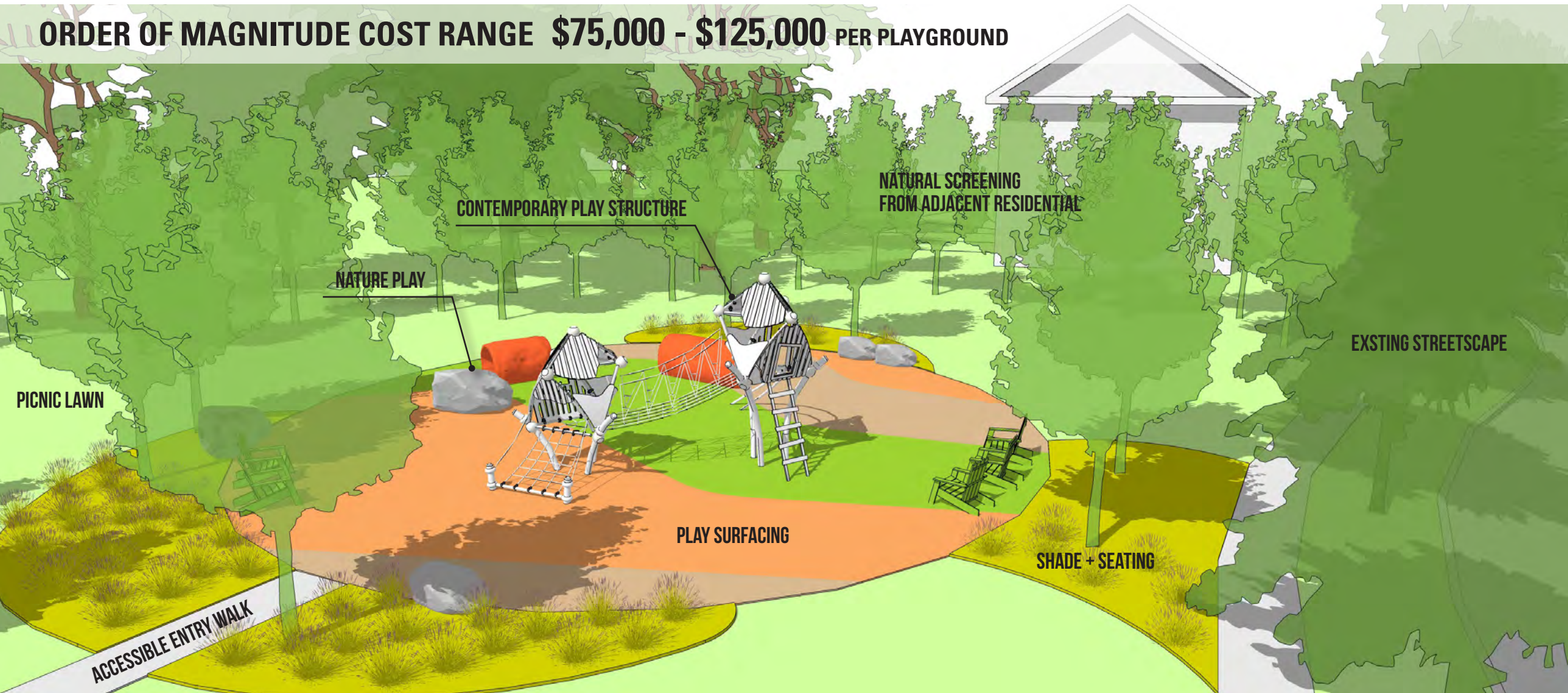


NEIGHBORHOOD PLAYGROUNDS | SAMPLE APPLICATION

NORTH OF WOODS







ORDER OF MAGNITUDE COST RANGE \$75,000 - \$125,000 PER PLAYGROUND

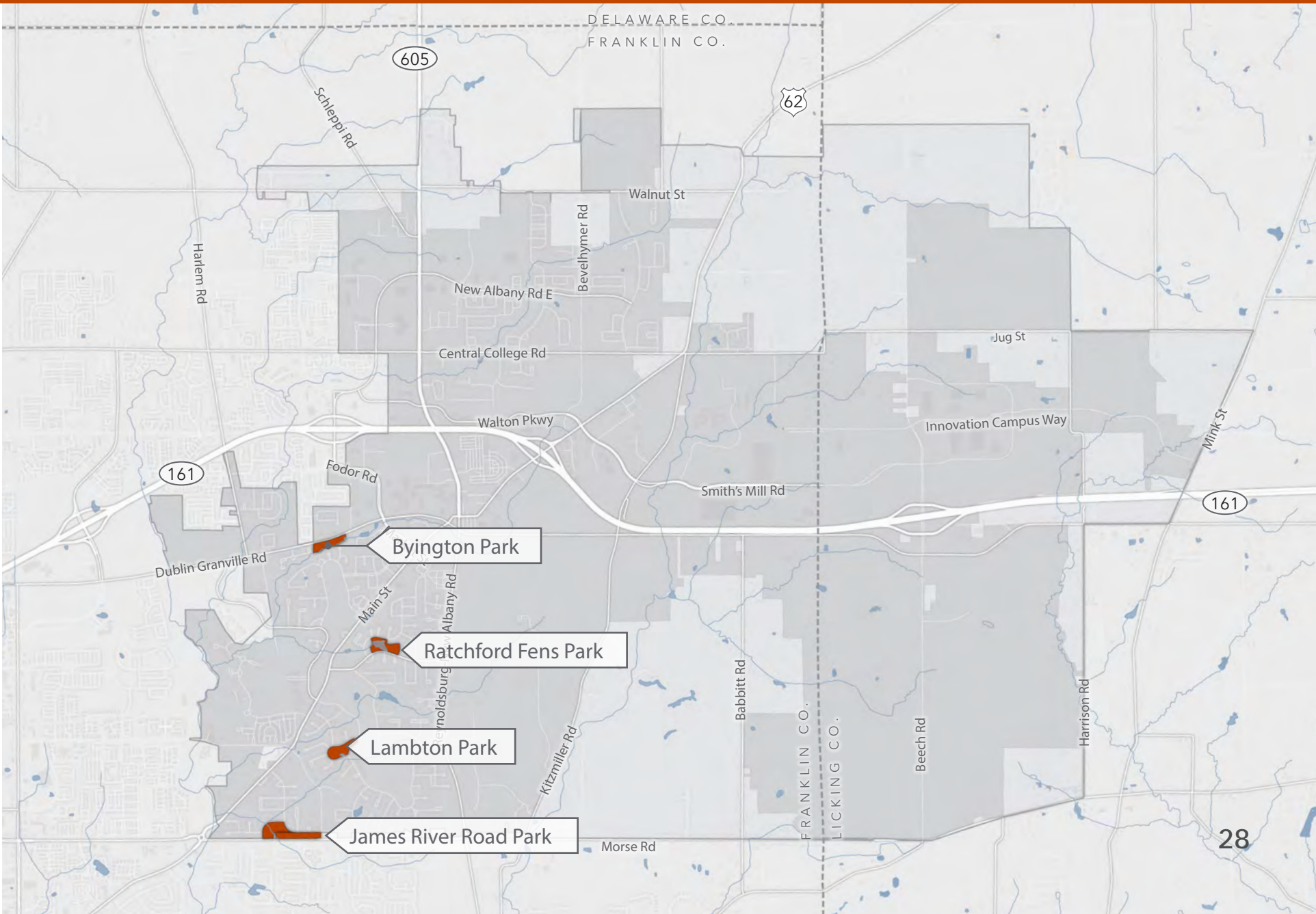


NEIGHBORHOOD PARKS | LOCATIONS



LEGEND

-  Neighborhood Parks
-  Corporate Boundary
-  Study Area Boundary
-  Rivers & Streams



NEIGHBORHOOD PARKS | RECOMMENDATIONS



- Enhance existing amenities
- Add new program elements to amplify existing unique programs
- Highlight community-wide reach, not just neighborhood
- Update play equipment
- Add supplemental amenities for all ages and encourage longer stay



Fishing Pond at Lambton Park



ENHANCE EXISTING PARK AMENITIES

Water Activity

- Belvedere
- Fishing platform

Frame Picturesque Moments

- Gazebo
- Benches
- Council ring
- Open lawn

Sport Activity

- Add or upgrade sport courts

Natural Amenities

- Add or upgrade existing trails through mature wooded areas

Play Equipment

- Neighborhood playground playbook

Creature Comforts

- Seating
- Shade or shade structure
- Picnic tables

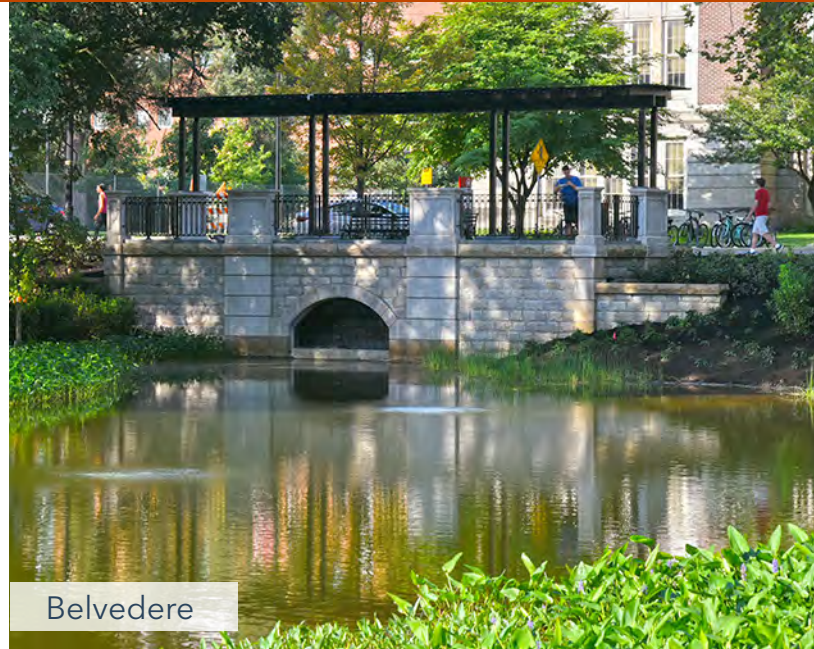
Awareness

- Wayfinding
- Community-wide understanding park is for all

NEIGHBORHOOD PARKS | PROGRAM ELEMENTS



Fishing Dock



Belvedere



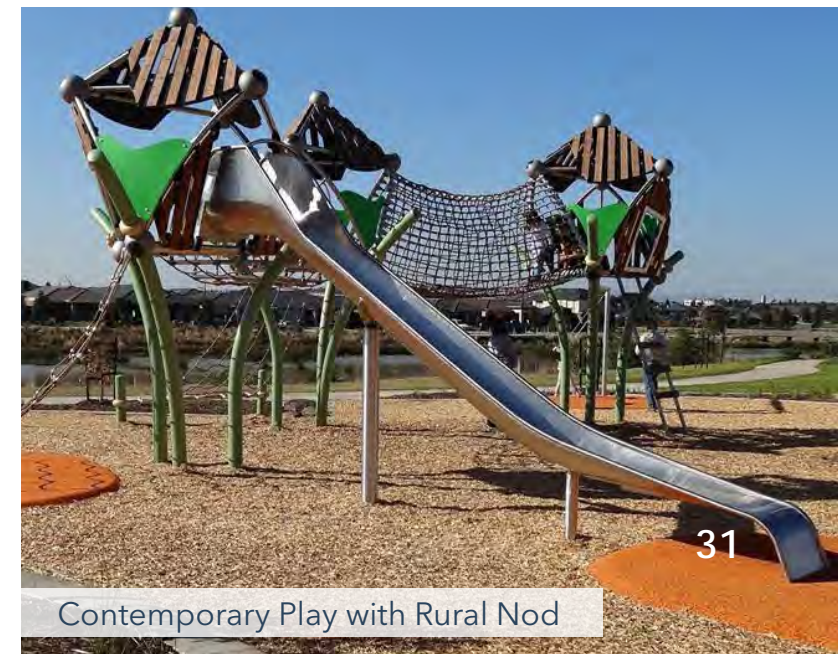
Upgraded Shade + Seating



Upgraded Sport Courts



Small Gathering Spaces



Contemporary Play with Rural Nod

NEIGHBORHOOD PARKS | SAMPLE APPLICATION





LAMBTON PARK

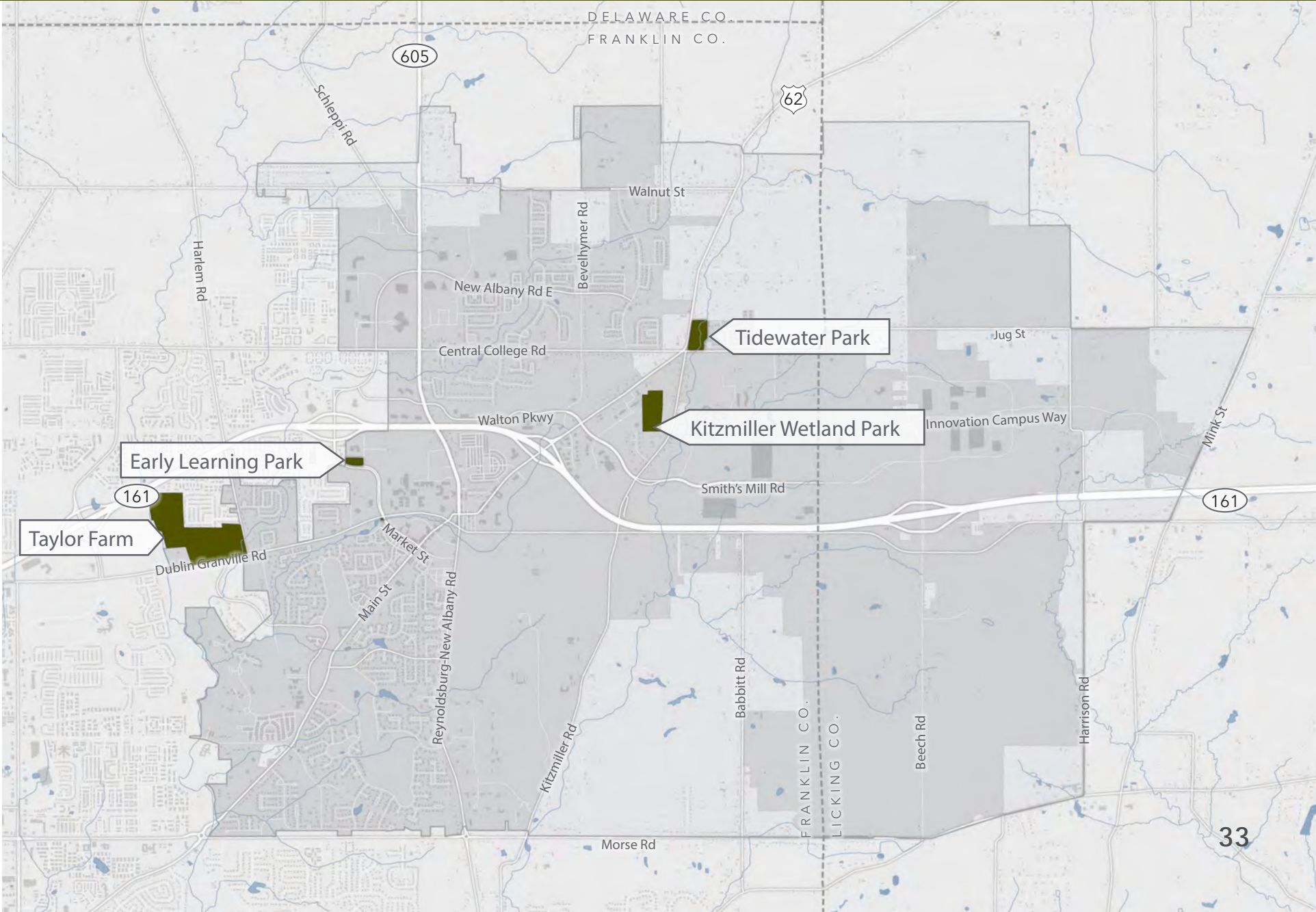


PARKLAND PRESERVES | LOCATIONS



LEGEND

-  Parkland Preserves
-  Corporate Boundary
-  Study Area Boundary
-  Rivers & Streams



PARKLAND PRESERVES | RECOMMENDATIONS



- Provide physical access with clear visual cues at entrances and throughout the park
- Respond to and highlight physical changes in the landscape with appropriate trail materials and different program elements
- Add educational interpretive signage
- Manage and maintain City-owned forests and natural open spaces
- Improve the quality of City-owned natural resources



Existing View from Central College Bridge at Tidewater Park



INVITE RESIDENTS TO EXPERIENCE NATURE

Access

- Ample parking
- Clear, visible trail heads
- Trail material change where applicable: asphalt, boardwalk, mown, etc.
- Overlook at water's edge

Education

- Series of educational signage types: tree identification, wetland knowledge, etc.
- Updated outdoor classroom

Maintenance

- Provide mown buffer between "wild edge" and trail
- Compose and adhere to a best practices maintenance manual for all natural areas
- Regularly scheduled invasive plant removal

Creature Comforts

- Benches along trail
- Picnic tables

Awareness

- Wayfinding and access
- Clarify that this is a park

PARKLAND PRESERVES | PROGRAM ELEMENTS



Educational Overlook



Bicycle Access



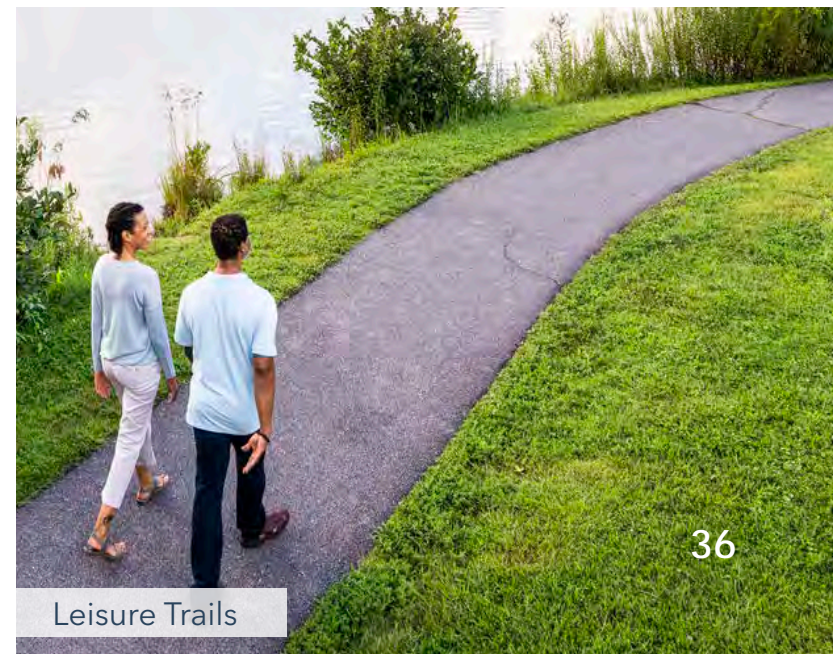
Wetland Boardwalks



Mown Meadow Trails



Playful Environmental Interactions



Leisure Trails

PARKLAND PRESERVES | SAMPLE APPLICATION

TIDEWATER PARK

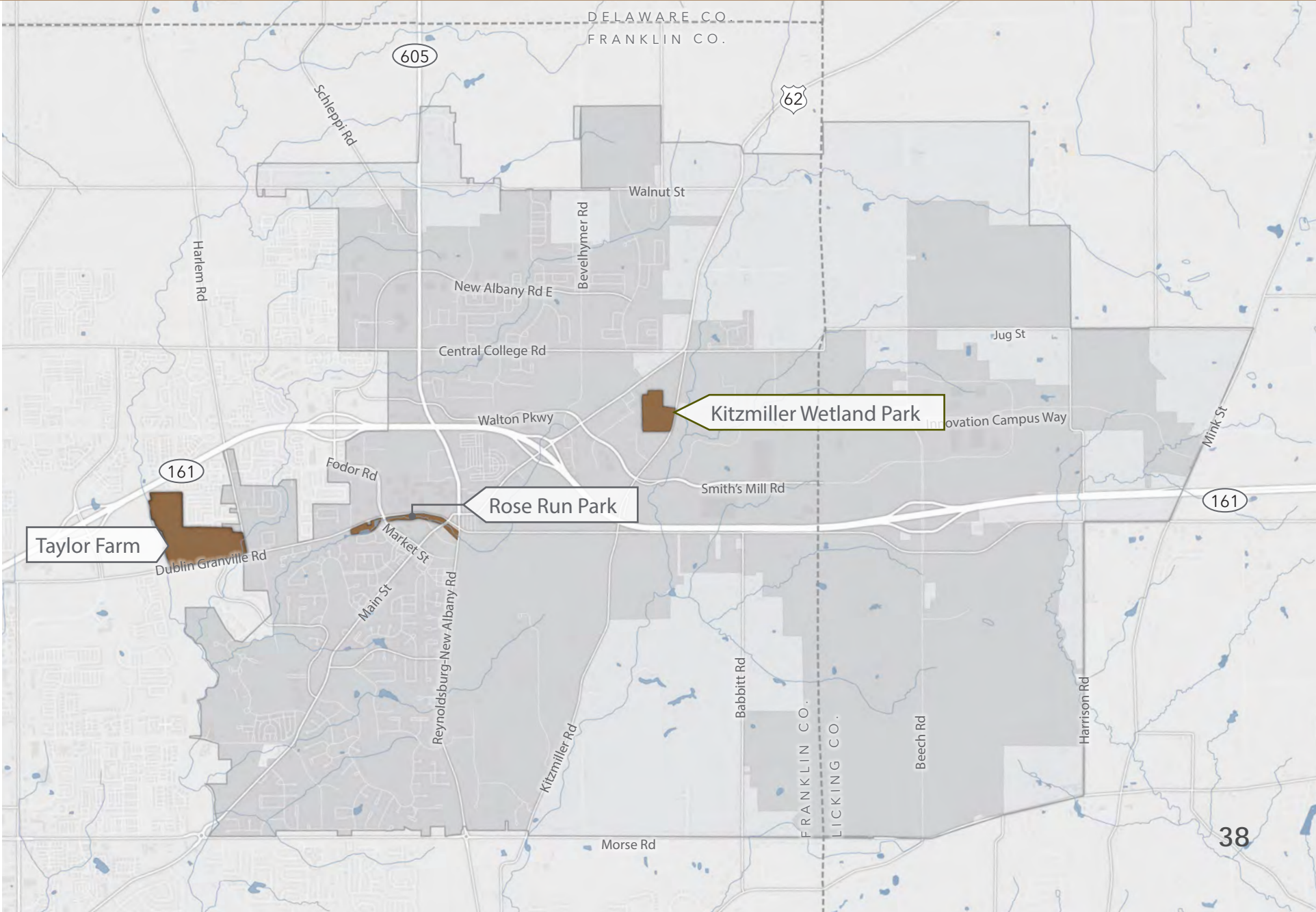


DESTINATION PARKS | LOCATIONS



LEGEND

- Destination Parks
- Corporate Boundary
- Study Area Boundary
- Rivers & Streams



DESTINATION PARKS | RECOMMENDATIONS



- Create a regional, multi-program, all-day park attracting all New Albany residents and others from Central Ohio
- Select strategic, community-central sites with clear, easy access
- Provide amenities capable of catering to large gatherings at various sizes (ie: weddings to community festivals)
- Continue to improve Rose Run as the City's central green space



Example: Millstone Creek Park, Westerville, Ohio



CREATE A REGIONAL ALL-DAY EXPERIENCE

Active

- Destination playground
- Skate park
- Splash pad
- Flexible sport fields (turf)

Passive

- Wetland preserves
- Stream access and overlooks

- Trails
 - » Improved
 - » Unimproved
 - » Boardwalks
- Open lawn

Large Gatherings

- Event center (100-250 people)
- Civic spaces
- Festivals

Creature Comforts

- Restroom facilities
- Ample parking
- Shade structure
- Picnic tables

Awareness

- Wayfinding
- Clear, visual park access

DESTINATION PARKS | PROGRAM ELEMENTS



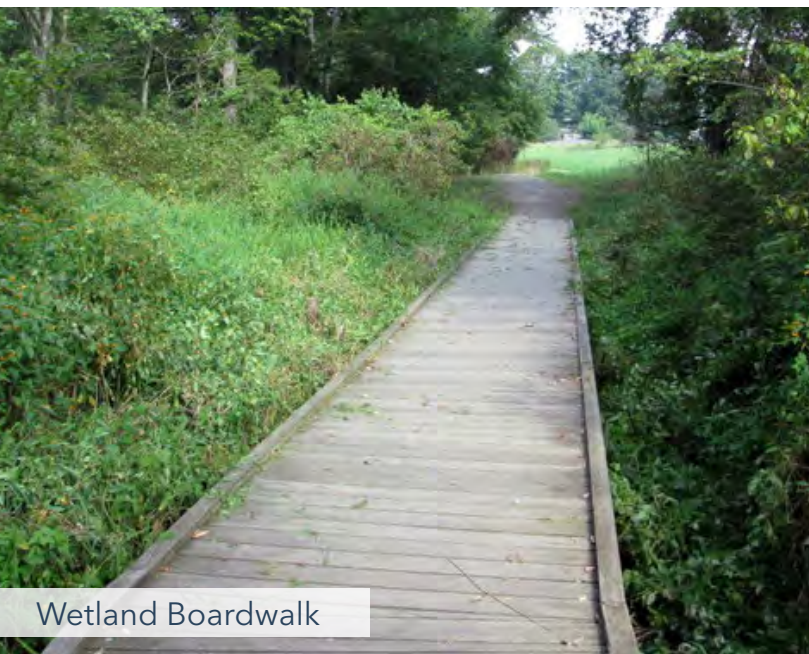
Destination Playground



Stormwater Skate Park



Splash Pad



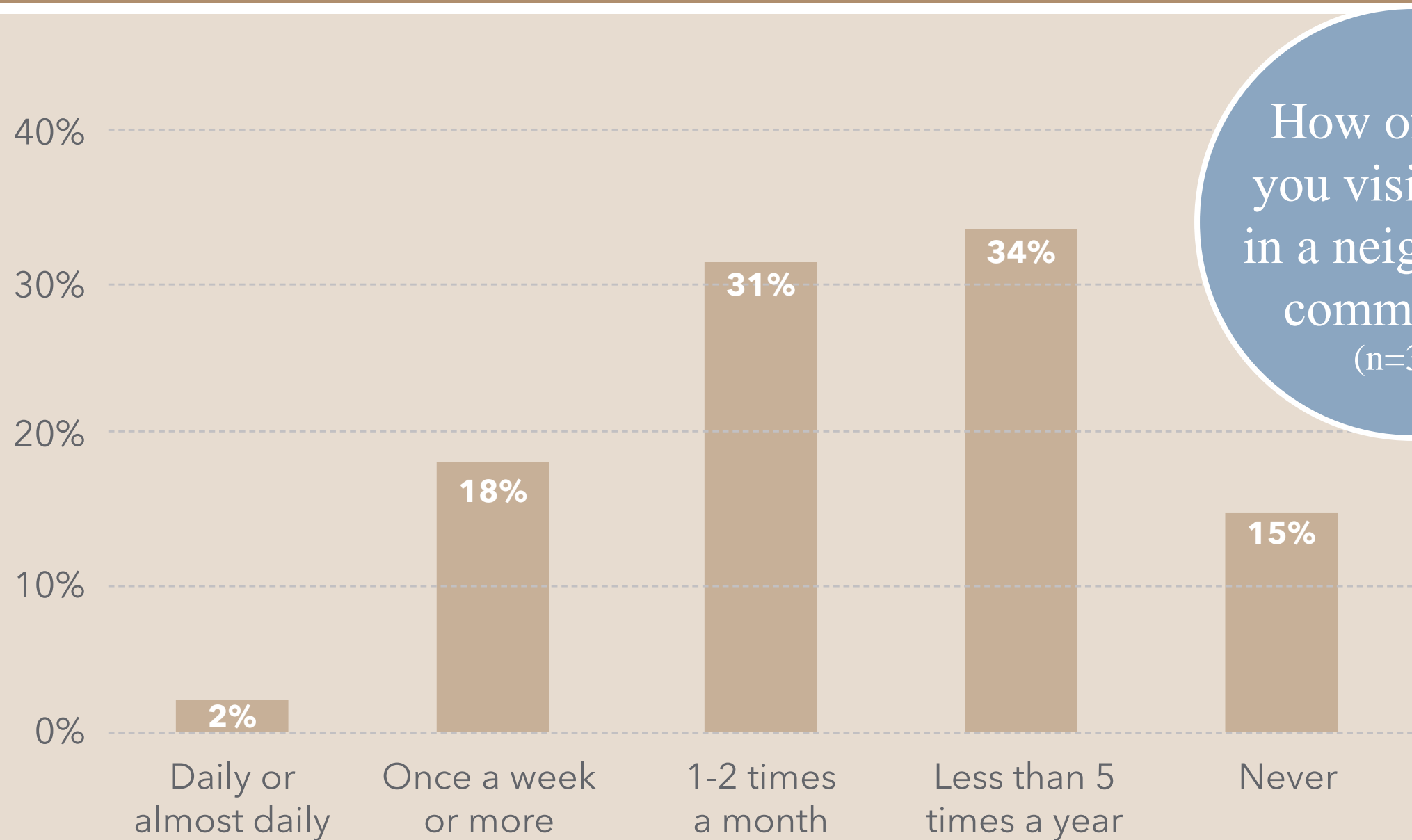
Wetland Boardwalk



Large Event Capabilities



Restroom Facilities



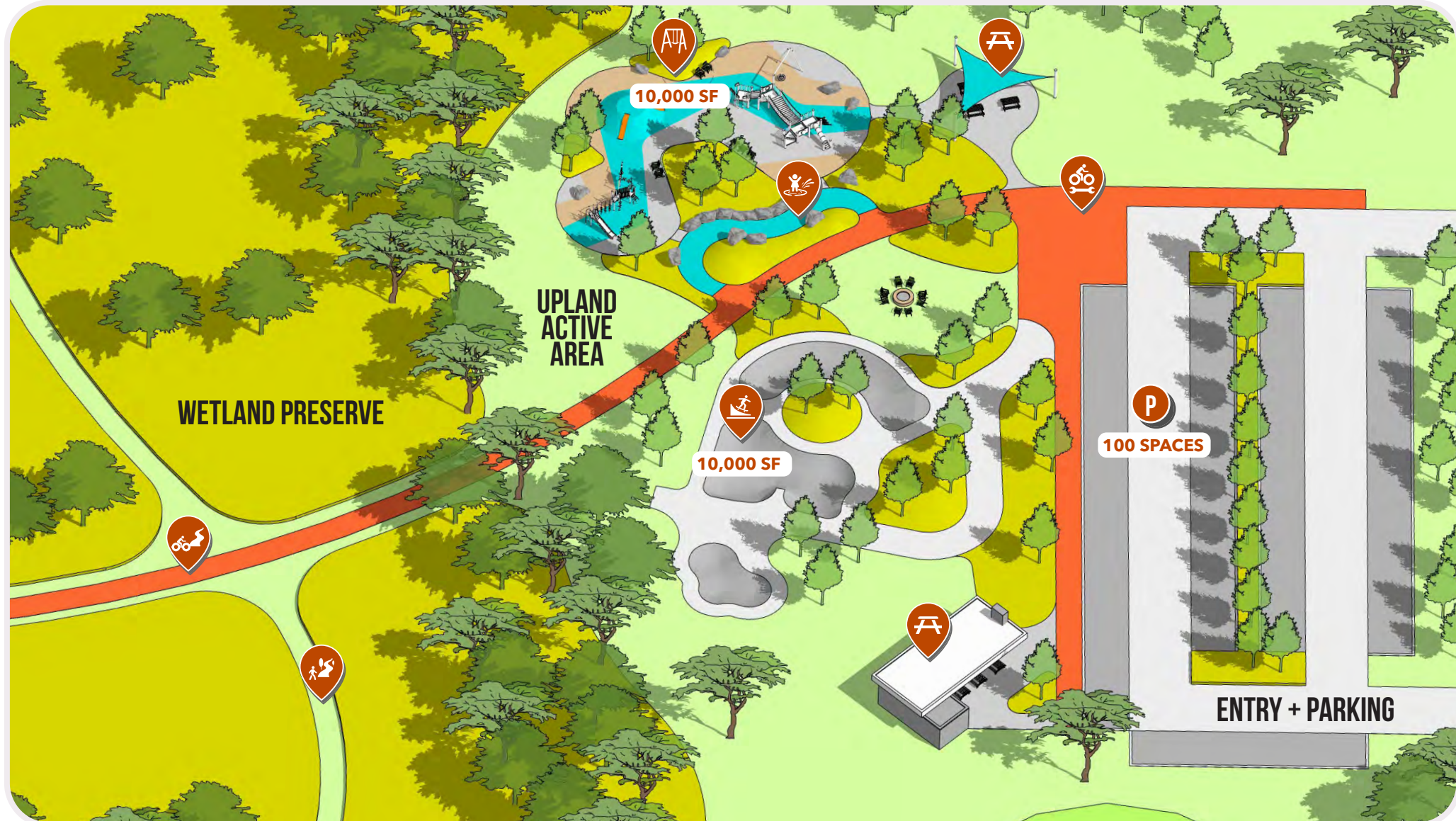
How often do you visit a park in a neighboring community?
(n=354)

DESTINATION PARKS | SAMPLE APPLICATION

KITZMILLER PARK



DESTINATION PARKS | SAMPLE APPLICATION: ENLARGEMENT AREA



RECOMMENDATIONS RECAP

1. Upgrade **Neighborhood Playgrounds.**

2. Enhance **Neighborhood Parks.**

3. Improve Access to **Parkland Preserves.**

4. Create Regional, All-Day **Destination Parks.**



NEXT STEPS

COMPLETE PARK FRAMEWORK DOCUMENT

WHAT IS NEXT?

Individual Park Explorations

- All typologies

Order of Magnitude Costs

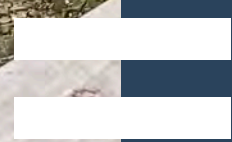
- Capital expenses

Compilation of Document

Presentation to City Council



Ratchford Fens Park



QUESTIONS