

Designated Outdoor Refreshment Area (DORA) Frequently Asked Questions

What is a DORA?

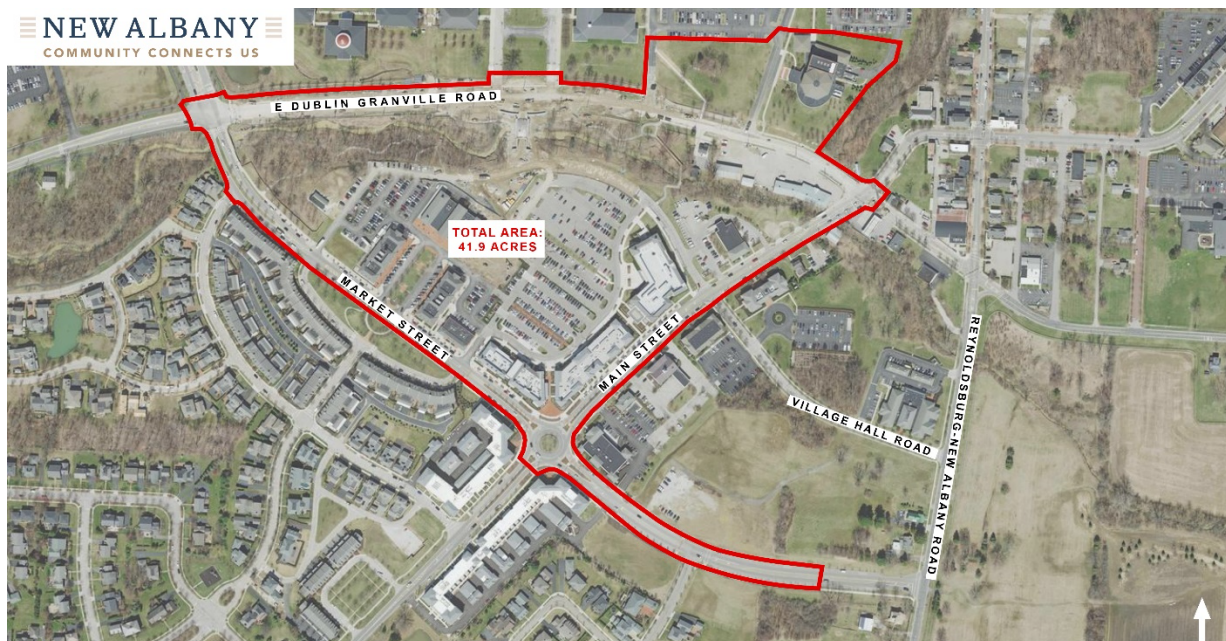
Per ORC § 4301.82, a Designated Outdoor Refreshment Area or “DORA” is a specified area of land that a local legislative authority has designated as exempt from certain open container provisions as defined within the legislative act that created the DORA. Thus, patrons ages 21 and older may purchase an alcoholic beverage for on-premises consumption from a DORA designated liquor permit holder and can leave the permit premises with an opened alcoholic beverage container and continue consuming it within the DORA.

While the law places certain restrictions on DORAs, generally speaking the decision of whether to create a DORA, including its size, how many should be created, its hours of operation, what cups are used, or any health, safety, and sanitation plans when the DORA is in effect are all locally controlled decisions.

The Ohio Department of Commerce’s Division of Liquor Control will review New Albany’s resolution or ordinance that created the DORA to ensure that it meets basic legal requirements like having the minimum number of existing qualifying permits within the DORA at the time of creation. As long as the DORA documents meet the minimal legal requirements, the Division records the DORA’s boundaries in its permitting system and affixes a DORA designation on the permit of any current or future qualifying permit holders within the DORA.

Where will the DORA be located?

The boundaries of the DORA are depicted on the map below. This proposed DORA is approximately 41.9 acres. The DORA encompasses portions of the New Albany Village Center, including portions of the Market Square Development, Rose Run Park, and the City’s Arts District.



**How will people know the DORA boundaries?**

The DORA boundaries will be clearly marked on the public pathways with ground signs, mounted signs and/or decals.

When will the DORA operate?

The hours of operation for the DORA will be Thursday – Saturday from 5:00 PM through 10:00 PM. These hours and days can be changed by City Council at any time. Any community event that is held within the DORA must receive a permit through the office of the city manager.

Can people bring their own alcohol to drink in the DORA?

No. Beer, wine, or other intoxicating drinks must be purchased from an establishment with a permit to sell alcoholic beverages within the DORA.

What are the DORA's guidelines?

The following guidelines are in place for the DORA:

- A person may have possession of an open container of beer, wine, or intoxicating liquor outdoors within the DORA if such alcoholic beverage was purchased from a qualified permit holder within the DORA.
- No person shall possess an open container of beer, wine, or intoxicating liquor while being in or on a motor vehicle within the DORA, unless the possession is otherwise authorized under division (D) or (E) of ORC § 4301.62.
- No patrons are permitted outside of the DORA boundary with their beverage.
- Patrons must finish and dispose of cups prior to entering a new establishment which serves alcohol.
- If a business chooses not to participate in the DORA, cups must be disposed of prior to entry.

What plans and procedures are in place to ensure public safety?

Pursuant to ORC § 4301.82(B)(5) and (F)(1)(d), a Safety Plan has been developed to ensure public safety within the DORA. The New Albany Police Department is committed to working with the community and the businesses within the DORA to preserve and maintain the safety and security of all who visit and work within. The Public Safety Plan includes officer patrol responsibilities, extra police patrol protocols, and a schedule for reviewing and updating the Public Safety Plan.

Do other cities in Central Ohio have DORAs?

Many cities in Central Ohio have DORAs including the cities of Dublin, Bexley, Worthington, Hilliard, Grove City, Delaware, and Powell.

How can I get more information?

The City of New Albany is in the initial phase of implementing the DORA. More details about signage, official DORA cup distribution, and implementation dates will be determined in the coming weeks and months. The city will continue to reach out to businesses as information becomes available. If you would like to supply an email address to receive updates, the city will include you on an email distribution list. You can contact Adrienne Joly (ajoly@newalbanyohio.org or 614-393-2257) or Anna van der Zwaag (avanderzwaag@newalbanyohio.org or 614-245-8708) with any questions.