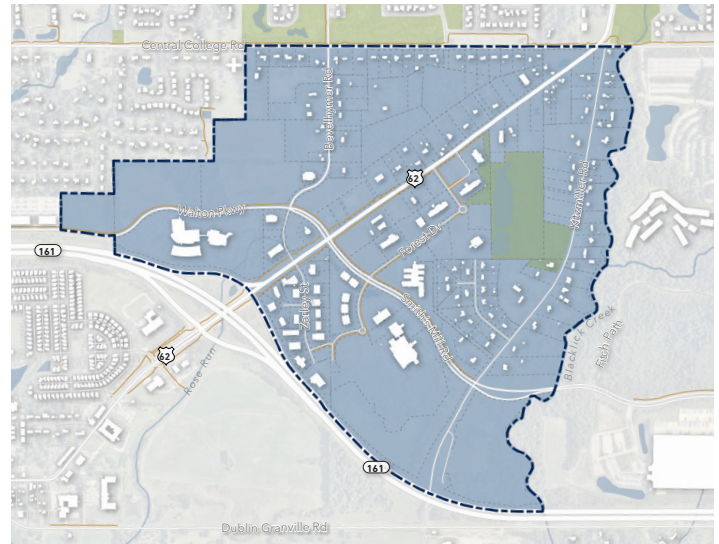


# US-62 INTERCHANGE FOCUS AREA PLAN

Study Area Map

The US-62 Interchange Focus Area Plan is an addendum to the City of New Albany's Strategic Plan, Engage New Albany, adopted in 2020. The plan will provide a contemporary and in-depth set of existing conditions and findings that ultimately inform an updated future land use and thoroughfare plan for the study area.

As regional economic development continues to unfold within and surrounding our community, our major commercial corridors and adjacent residential areas have seen significant growth and development pressure. The US-62 Interchange Focus Area Plan captures one of these dynamic areas and allows for the city to reassess, plan, and provide standards for future growth.



## Community Engagement Themes

Based on the first phase of community engagement, including the first Steering Committee meeting, the first Community Workshop, and survey, the Planning Team summarized the input into five themes. The themes are summarized below:



Residents desire responsible growth and development in the Focus Area.



Traffic, congestion, and roadway improvements remain a top priority.



Residents prefer different kinds of restaurants, services, and retail than what is offered in the Focus Area.



Pedestrian infrastructure, safety, and connectivity are critical, especially along Central College, Kitzmiller, and Bevelhymer Roads.



Kitzmiller and Tidewater Parks are potentially catalytic investments to spark a healthier, more active, recreationally oriented district.



518

Survey responses

21

Steering Committee  
members



1,400+

Open-ended comments received  
from community members

180+

Community Workshop #1 attendees



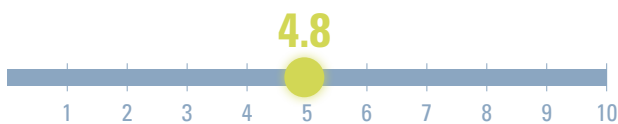
# US-62 INTERCHANGE FOCUS AREA PLAN



## Public Survey Highlights

The first community survey was launched on May 14, 2024. The survey was available for residents to complete at Community Workshop #1 and online for those who were unable to attend in-person. A combined total of 518 paper and online surveys were completed by June 7, 2024.

**Q: On a scale of 1-10, with 1 being the lowest and 10 being the highest, how satisfied are you with the Focus Area today?** (n=488)



**Q: Tell us about some of your favorite places in the Focus Area. This can be an institution, a business, a place, or a destination.** (n=346)



## Next Steps

**Social Pinpoint Launch:** The community will be able to participate in online interactive engagement, utilizing mapping tools to provide input on key sites in the Focus Area and opportunities for further feedback on the planning process.

**Public Workshop #2:** The next public workshop will be scheduled for late fall, where residents can react to and provide feedback on key plan elements and concepts.

"Pedestrian friendly; more **interesting, local** restaurants or businesses..."

"The intersection of Central College/62 and Kitzmiller is a **bad place for kids to cross on the bike path.**"

**Q: What would you change or improve in the Focus Area?** (n=411)

More sit-down, upscale, or casual restaurants | 33%

Continue prioritizing traffic and roadway improvements | 20%

More high quality, small shops/specialty retail/grocers | 14%

Less fast-food | 13%

Add leisure trail connections | 12%

Maintain New Albany's character and charm | 11%

Add parks / open space | 9%

Enhance walkability and sidewalk infrastructure | 7%

Don't add more housing | 4%

Small business development | 3%

Other\* | 29%

*\*Other comments include themed responses that made up less than 3% of the total responses received.*

## Plan Webpage

Please use the QR Code below to access the plan's webpage:

