



PUBLIC SERVICE

Public Service Department

MONTHLY REPORT

March 2025

Professionalism

Integrity

Reliability

Quality

Pride

Inside This Issue:

Department Updates	2
Capital Projects	5
Streets	6
Traffic	7
Special Projects	8
Facilities	9
Utilities	10
Parks & Open Space	13
Right of Way	14
Forestry	17
Fleet	19

DEPARTMENT UPDATES

March 2025

Highlights

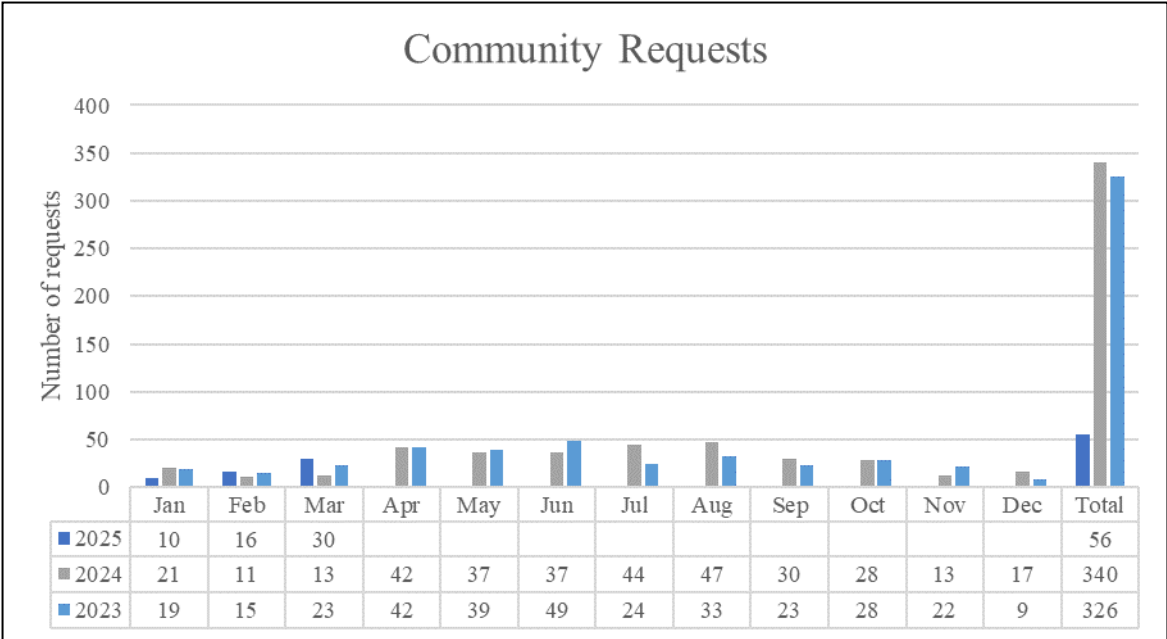
- **CDL Training:** The CDL class continued throughout March, with in-vehicle practice sessions. Employees are working with self-certified CDL trainer, Shaun Bush, to log the necessary hours before becoming eligible to test for their Class A CDL license.
- **Staff Meeting:** The public service department attended the All Employee CONNECTS meeting at Brick House Blue at the new Innovate New Albany building on March 13th.
- **Work Order Software:** Public services manager Angie Hobart, administrative assistants Bridget Beck & Lili Harding along with utilities supervisor Nick Cichanowicz met with GIS manager Ryan Kelley and project implementation specialist Sriya Ngo to discuss new work order software for the department.
- **Windsor Park:** Spring maintenance work is taking place at the park. The work includes power washing and painting the pergola, removing and replacing the brick pavers and making landscape improvements.
- **Snow/Salt Totals:** Another successful year for snow operations. Despite a heavy snow fall this winter, the team demonstrated efficiency and commitment to ensuring the streets were safe for residents. A total of 2,993 tons of salt used and 1,729 hours keeping the roads clear.
- **Pickleball Court Maintenance:** New windscreen has been ordered for the courts, and installation is expected to be complete by mid-April. Staff is coordinating additional repairs, including fixing seams, addressing pavement spalling and recoating the courts.



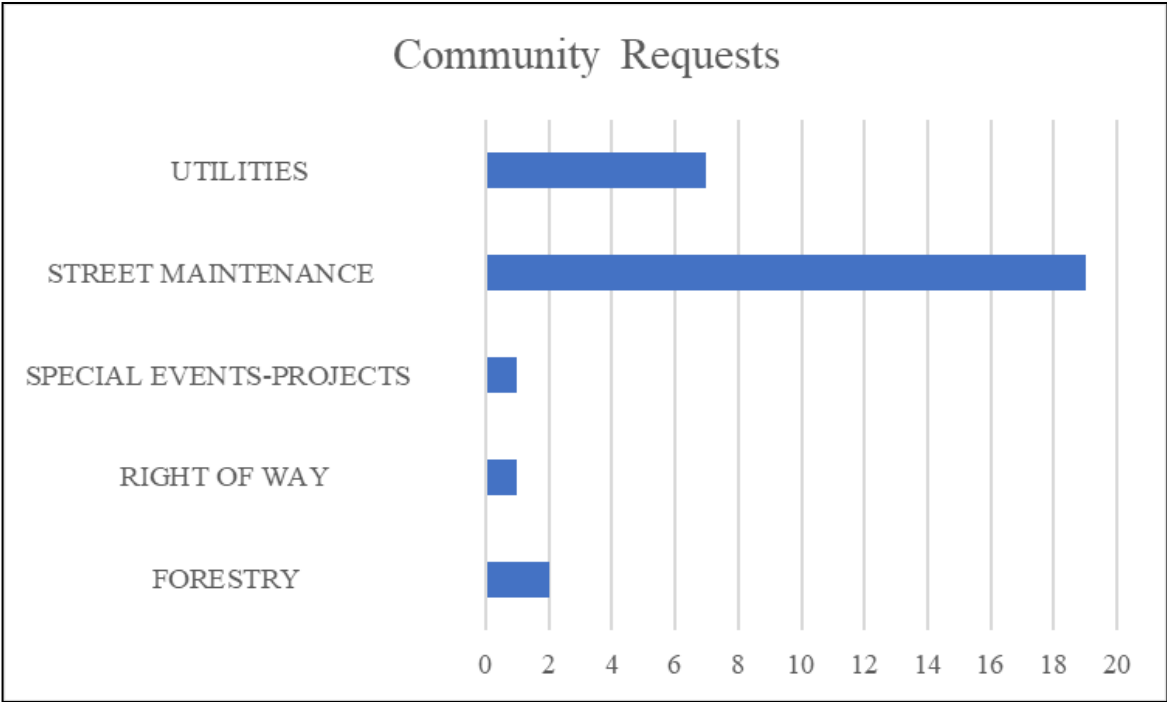
All employee CONNECTS meeting on March 13th

DEPARTMENT UPDATES
March 2025

Community Requests



In March 2025, the department received a total of 30 community requests, with the majority related to street maintenance. This marks a significant increase compared to March 2024, which had 13 requests. The increase may be due to the freeze-thaw weather.

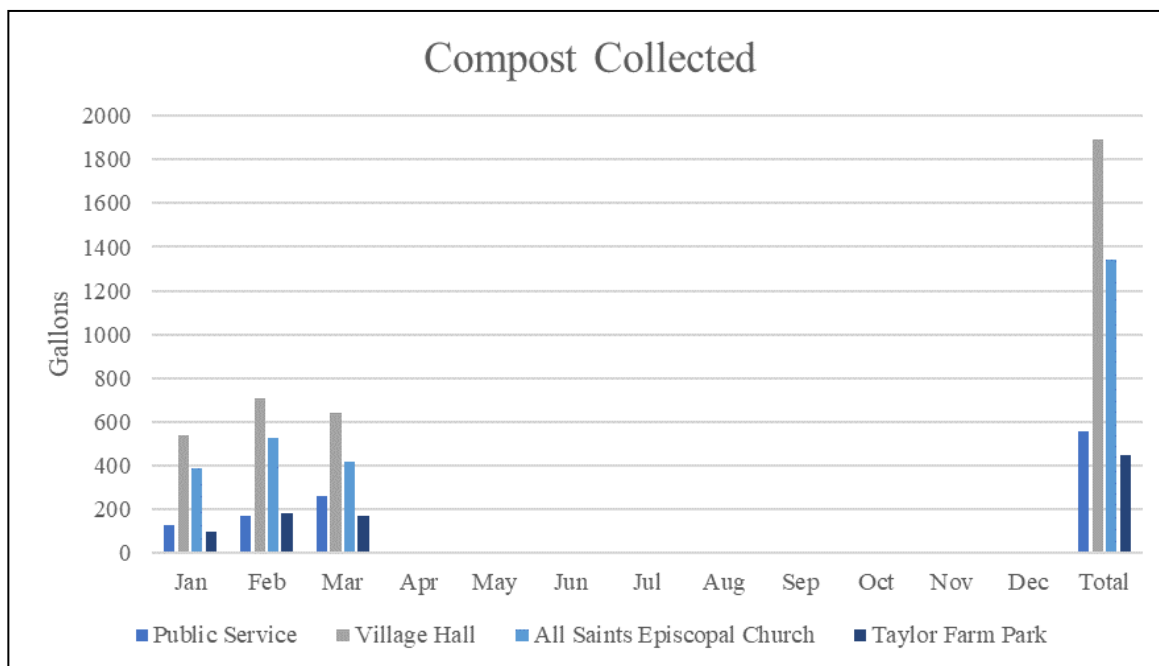


This graph represents the types of requests received from residents for public services.

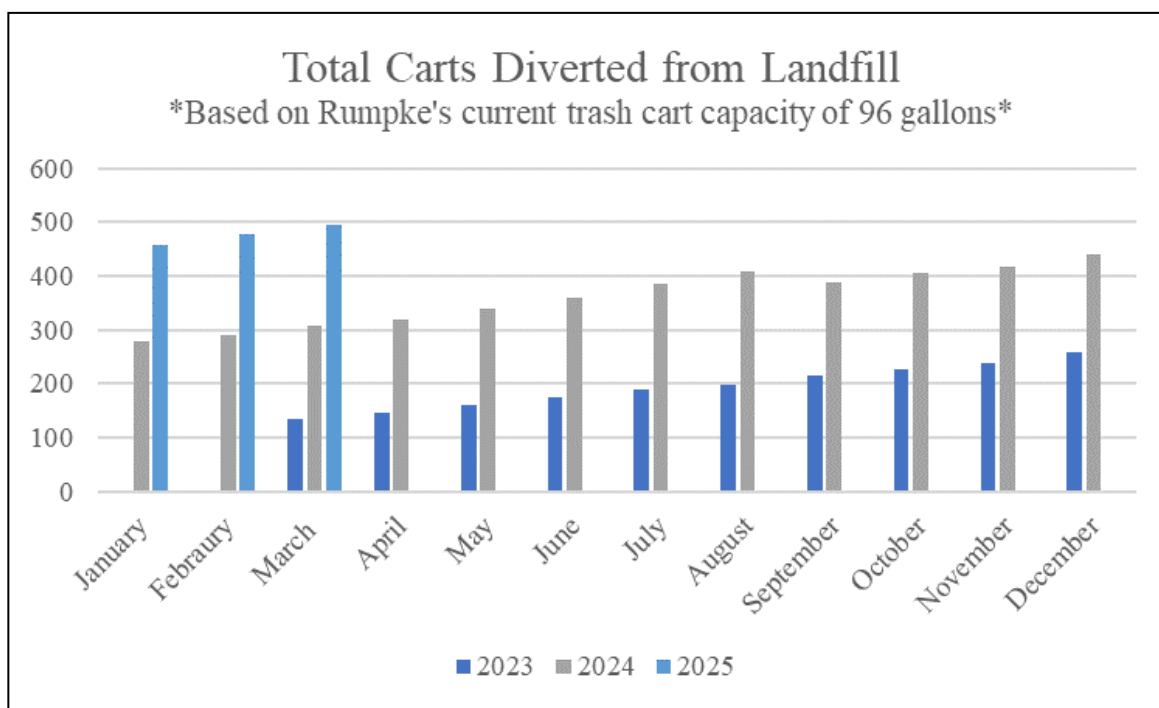
DEPARTMENT UPDATES

March 2025

Composting



This graph illustrates the volume of compostable waste collected from four key locations across the city, supporting the department ongoing sustainability efforts. These initiatives help reduce landfill waste and promote environmentally responsible practices.



This graph shows the total number of Rumpke trash carts diverted from the landfill year-to-date, reflecting the city's commitment to reducing waste and enhancing recycling efforts.

CAPITAL PROJECTS

March 2025

Overview:

The department actively maintains and improves city owned infrastructure. Capital projects are large scale projects that maintain or improve public assets. All capital projects are presented to city council before starting a public bidding process and project construction.

Market Street Extension

General Contractor:

- Complete General Construction

Contract Amount: \$11.6M

- 2024 Capital Improvement Fund

Construction Schedule:

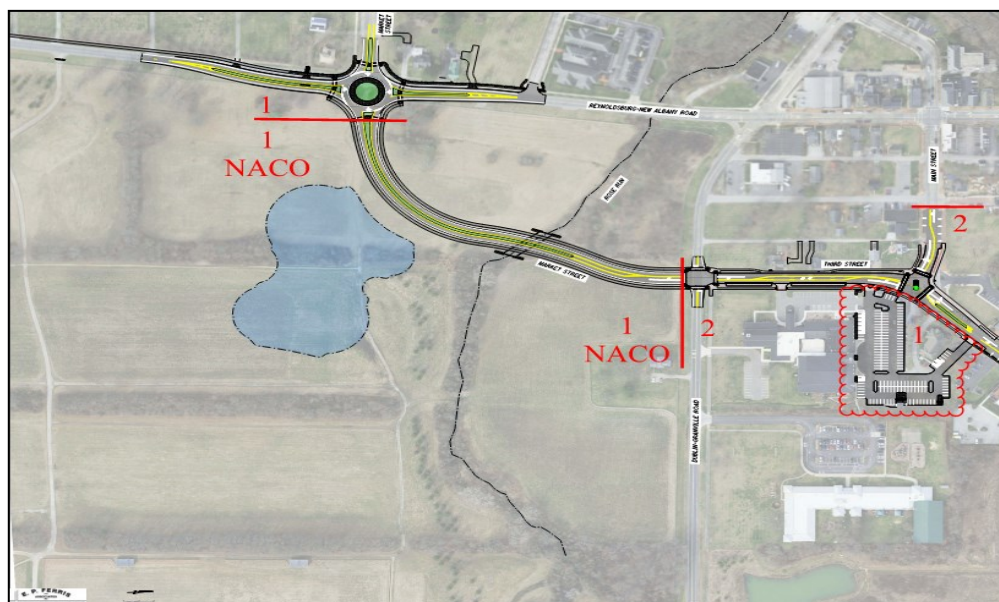
- Construction start date: March 2025
- Construction duration: 25 months

Project Description:

The 2020 strategic plan update identified the Market Street extension project as a priority roadway improvement project. The improvement will reduce traffic congestion in the Village Center and provide a more direct route to and from the SR161/US62 interchange.

Project Status:

Work began in March with tree clearing and utility relocations, followed by phased construction through early 2026. In Fall 2025, two-way traffic will be maintained while Third St. and US-62 are fully reconstructed. Final paving and landscaping will wrap up in early 2026.



Market St. drawing

STREETS DIVISION

March 2025

Overview

The city street division actively maintains all city-owned infrastructure, roadside mowing, street sweeping and leaf collection in a manner consistent with the demonstrated quality and aesthetic of New Albany.

Trash Pickup Day

The streets division organized a service-wide employee trash pick-up day focusing on three state routes: SR-605, SR-62 and Dublin-Granville Rd. A crew of 7 employees were assigned to each route. The crews worked from corporation line to corporation line along each state route, collecting a total of 30 bags of trash along with a truck bed full of loose items.



Trash collection along

TRAFFIC DIVISION

March 2025

Overview

The city traffic division actively maintains all city-owned street lights and signals in a manner consistent with the demonstrated quality and aesthetic of New Albany.

Street Light Repair

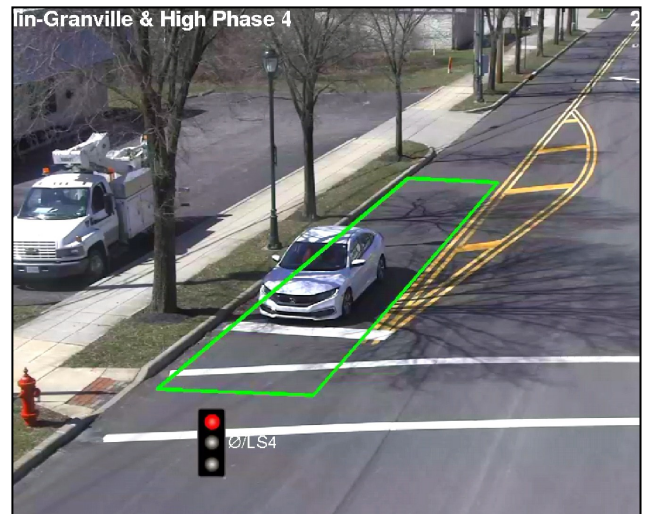
The traffic division identified street lights that require repair or replacement. Two light poles were damaged from motor vehicle accidents. The lights have been repaired and are functioning again.



Light pole repairs

Traffic Signal Detection

The traffic division was informed that the traffic signal at SR-605 & Dublin-Granville Rd. was not detecting eastbound traffic. The division identified that the detection zone was shifted, likely due to a storm. The signal was adjusted to ensure eastbound traffic is properly detected.



*Left: Traffic light detection before restoration
Right: Traffic light detection after restoration*

SPECIAL PROJECTS DIVISION

March 2025

Overview

The city special projects division actively maintains the annual stormwater inspection program as required by Ohio EPA and providing direct support to all special events city wide.

Pallet Recycling

Special projects supervisor Steve Kidwell gathered over 100 pallets during the service department's spring cleanup. The pallets were recycled at Hope Timber in Newark.



Trailer full of over 100 pallets

Pedestrian Walk Bridge

Special projects supervisor Steve Kidwell and maintenance worker Tyler Myers installed a pedestrian bridge, that was donated, between the public service building and Bevelhymer Park.



Pedestrian walk bridge installed

FACILITIES DIVISION

March 2025

Overview

The city facilities division actively maintains all city-owned buildings and utility structures in a manner consistent with the demonstrated quality and aesthetic of New Albany.

Mailbox Restorations

The division repaired damaged mailboxes following the snow season. Mailboxes are often damaged by wet snow when it is plowed off the roadway. Preventing this issue can be challenging. A mailbox on Harlem Rd. required a post to be secured with a bag of concrete to ensure stability.



Tyler Myers and Ted Sanders pouring concrete for mailbox post on Harlem Rd.

UTILITIES DIVISION

March 2025

Overview

The city utilities division actively maintains all city-owned utilities in a consistent manner that demonstrates the quality and aesthetic of New Albany.

Fire Hydrant Preventative Maintenance

The division performed preventative maintenance on 102 fire hydrants and repaired 17 out-of-service fire hydrants. It is vital to ensuring hydrants continue to operate as designed. The maintenance inspection list includes checking hydrant oil levels, gaskets, o-rings, bolts, nozzle caps, nozzles and replacing worn parts.



Dave Thatcher and Matt Lycans repairing a damaged fire hydrant along Beech Rd.

Curb Inlet Basin Reconstruction

The division started working on repairs to catch basin inlet structures. Curb inlets can be damaged from snow plows. The frames need to be repaired due to the shifting and cracking on the surrounding pavement and adjacent curb.

UTILITIES DIVISION

March 2025

Curb Inlet Basin Reconstruction continued...



Daitan Rood and Blake Crow make repairs to a curb inlet on Keesee Circle

The following neighborhoods and streets are scheduled for the 2025 curb inlet basin structure reconstruction:

North of SR-161

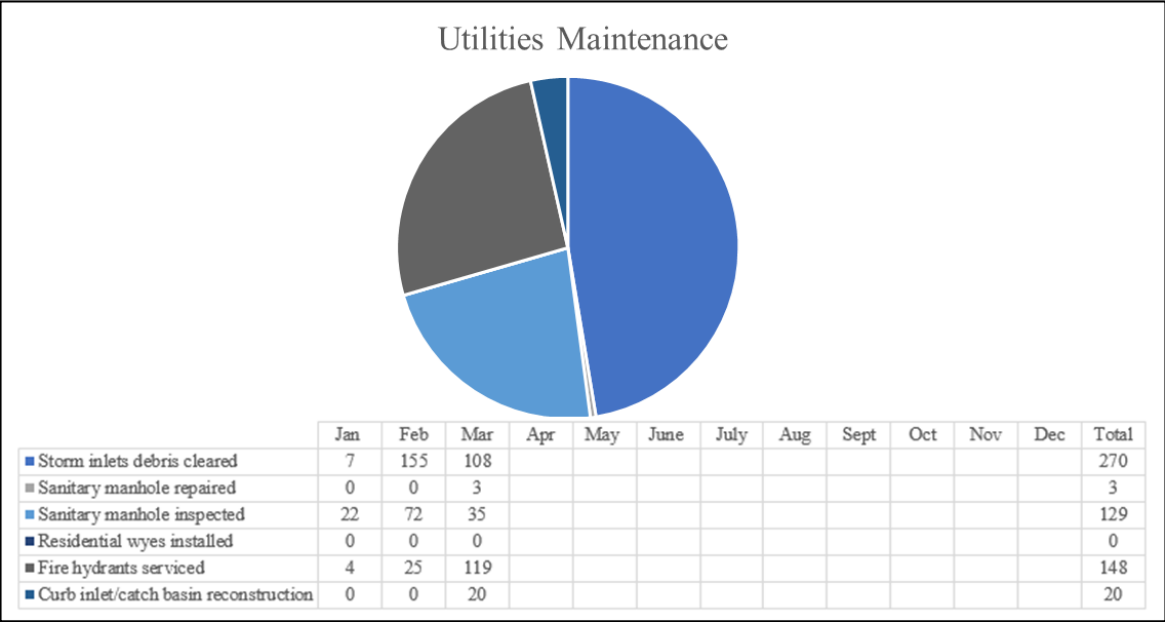
- The Links (Skarlocken Green, New Albany Links Dr., Stone Gate Dr., Britts Bend W)
- Dominion Club (Joysmith Cir., Camden Dr., Lark Ln., Keesee Cir.)
- Hampsted Village (Abbotsbury Ct.)
- Walton Parkway
- Forest Dr.
- SR-605
- Central College Rd.

South of SR-161

- Upper Brandon (Brandon Rd., Redford Ct., Farber Ct.,)
- Fenway (Goodrich Sq., Fenway Rd.)
- Crescent Pond (Landon Ln., Wilkin Ct., Bottomley Crescent, Goodheart Ct., Beecher Ct.)
- North of Woods (Cummins Ct., Trumbo Ct., Albery Loop, Cavendish Ct., McCurdy Dr., Neiswander Sq., Alpath Rd.)
- Ashton Grove
- Phelps Close
- Wiveliscombe
- Village Hall Rd.
- Byington Ln.
- Ealy Ct.
- Baughman Grant
- Alban Mews

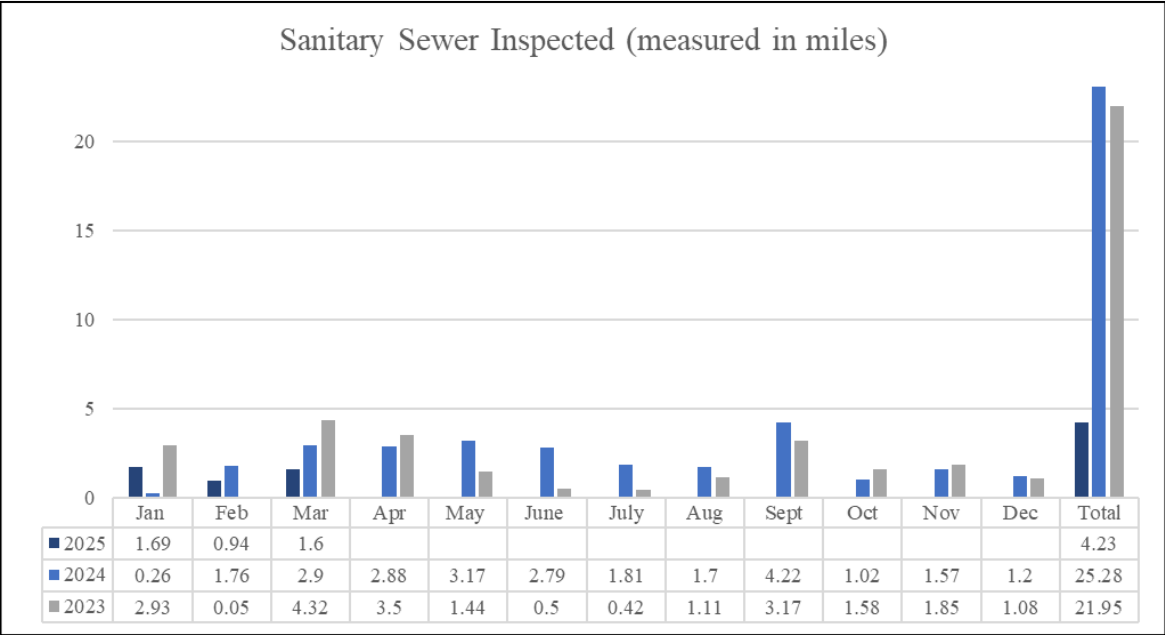
UTILITIES DIVISION
March 2025

Year-to-Date Utility Maintenance



This graph shows the year-to-date utility maintenance for sanitary sewers, storm sewers, wye installations and fire hydrants. These essential maintenance activities help ensure the city infrastructure operates smoothly, preventing potential disruptions and ensuring the safety and functionality of the water and sewage systems.

Sanitary Sewer Distance Inspected



This graph shows the distance of sanitary sewers the division has inspected year-to-date. Regular inspections are critical to identifying potential issues early, ensuring the proper function of the city sewer system and preventing costly repairs and disruptions.

PARKS AND OPEN SPACE DIVISION

March 2025

Overview

The city parks and open space division actively maintains all city-owned parks, playgrounds and common areas in a manner consistent with the demonstrated quality and aesthetic of New Albany.

Playground Inspections

The division inspected all city playgrounds and made the necessary repairs, ensuring all playgrounds were ready for spring. At Taylor Farm Park, the division inspected the cargo net along with all the bolts and fasteners at the park.



Rick Goldhardt inspecting the cargo net at Taylor Farm Park playground

Pickleball Court

The division prepared the pickleball courts for the opening on Monday, March 10th. The division installed the posts, nets and paddle holders on the courts. The windscreens were ordered and will be installed this spring.



Rick Goldhardt and Nate Fravel installing pickleball nets

RIGHT OF WAY DIVISION

March 2025

Overview

Right of way refers to a portion of city-owned land, varying from a roadway, tree lawns, sidewalks, bike lanes, street trees and street lights. Right of way also functions as a public and private utility corridor. Public storm sewers, sanitary sewers, waterlines and fiber optic lines are located within the right of way. Private utility providers are also permitted to locate within the right of way. The most common private utilities in the right of way are electric, natural gas, telephone, cable and fiber optic.

Annual Street Program

The division identified all of the ADA ramps and curbs needing repair for the annual street program. This year, many streets designated for mill and overlay are located in residential areas, resulting in more extensive concrete repair work.



Left and Right: Crumbling curbs around the city



Left and Right: Non-compliant ADA ramps

Right of Way Training

The division attended an OUPS training in Millersburg, where locators and excavators broke into small groups to discuss common issues they encounter. The division gained a deeper understanding and clarification on using specific locating marks that had not previously been utilized in the field to provide additional information for excavators.

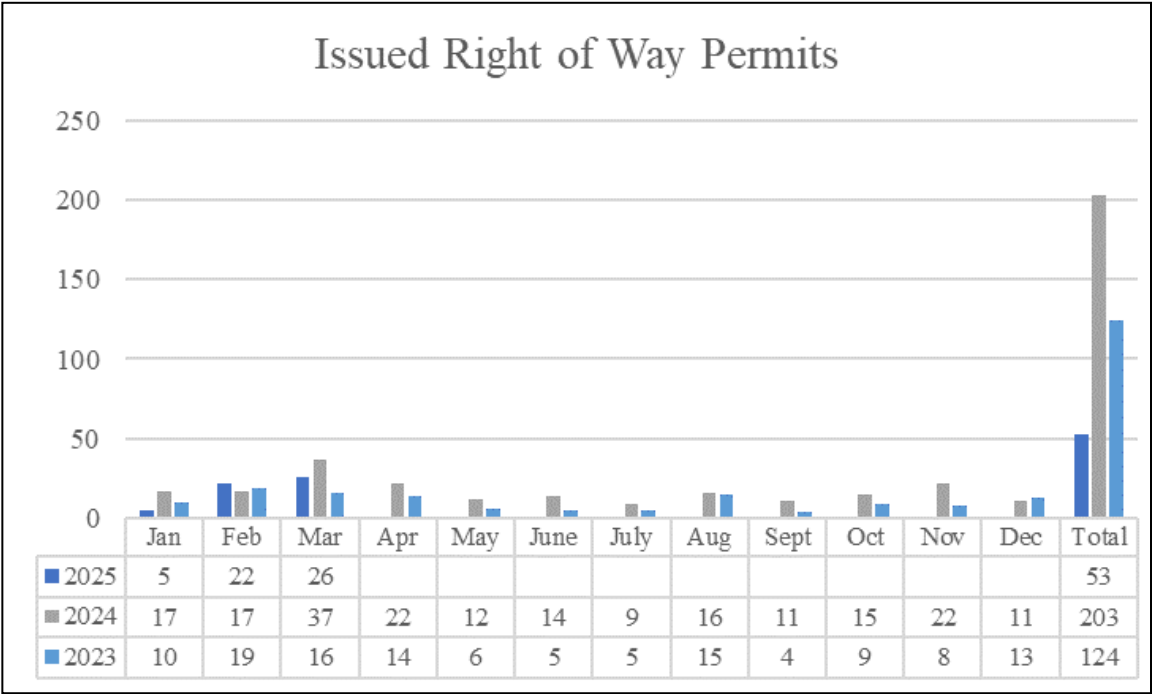
RIGHT OF WAY DIVISION
March 2025

The division actively coordinates with contractors working in the city public infrastructure, to ensure that they stay within the permitted areas, safely pothole crucial city utilities and restore any areas disturbed during construction. With an increasing number of right of way permits, these efforts are vital to maintain the integrity of the city infrastructure and minimize disruptions to residents and businesses. The division ensures compliance with regulations and the successful execution of 20 active permits.

Active Permits

- AT&T 149.0-24 (Worthington Rd. and Ganton Pkwy)
 - AEP 115.0-24 (605 from CC to NA Rd. E)
 - AEP 148.0-24 (Kitzmiller Rd.)
 - AEP 169.0-24 (DG and Harlem Rd.)
 - Breezeline 10.0-25 (7915 Smith’s Mill Rd.)
 - Columbia Gas 96.0-23 (Upper Clarenton Dr.)
 - Spectrum (Innovation Campus Way W)
- Spectrum 158.0-24 (DG/Market St.)
 - Spectrum 191.0-24 (Smith’s Mill Rd.)
 - Spectrum 192.0-24 (Upper Clarenton Dr.)
 - Verizon 29.1-24 & 60.0-24 (605 by Hawksmoor)
 - Verizon 194.0-24 (NA Rd. E and West Campus)
 - Verizon 04.0-25 (Walton Pkwy)
 - Gas Tap Permits (All over the city)

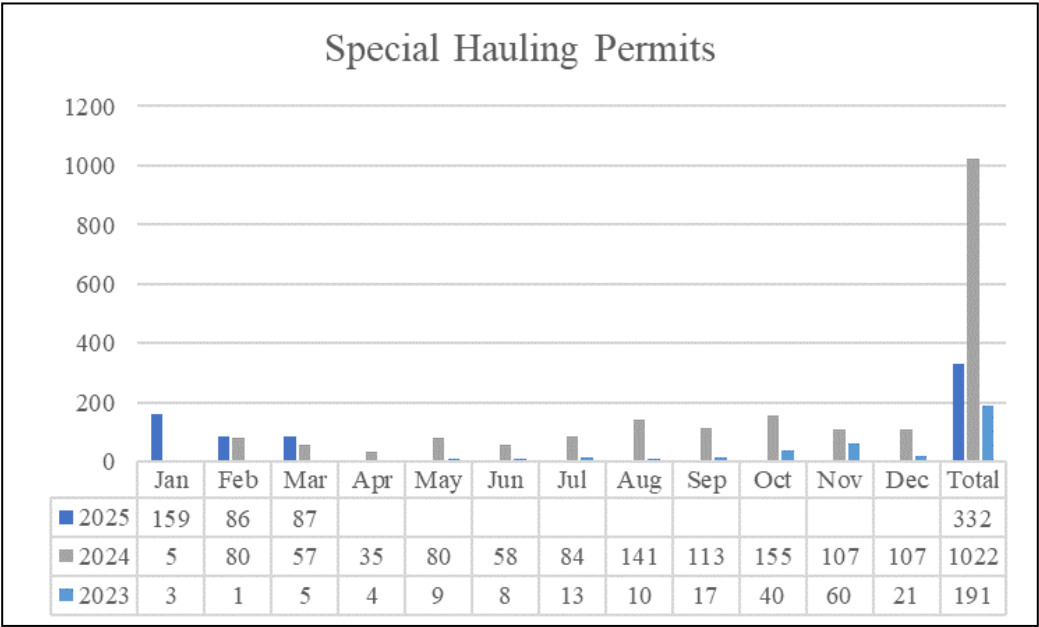
Right of Way Permits



This graph shows the number of permits issued each month by the city for utilities planned to be installed within the public right of way.

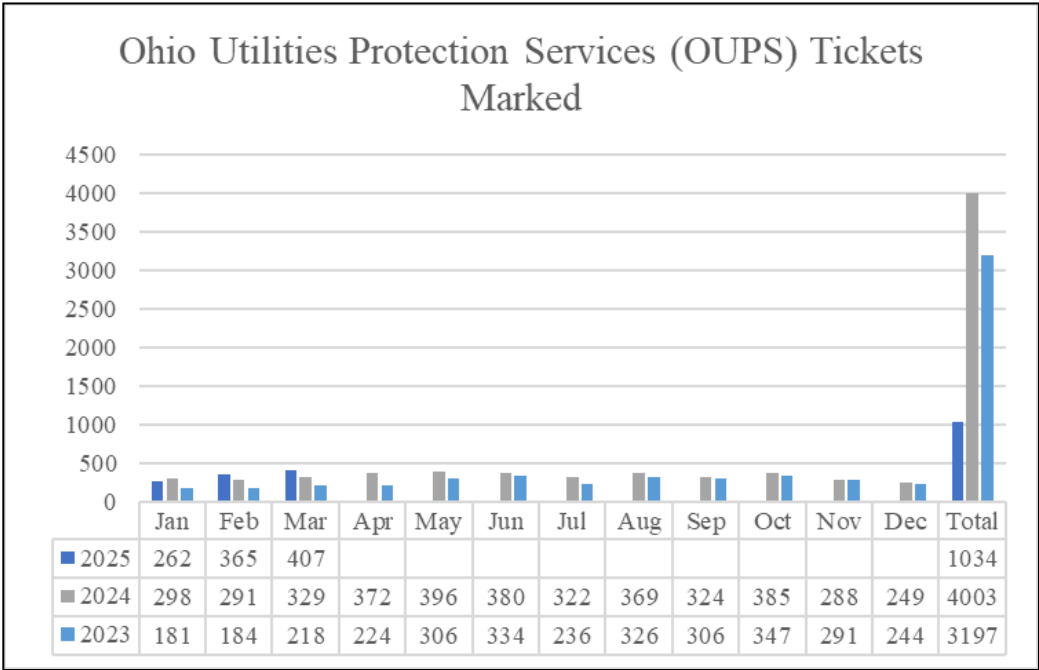
RIGHT OF WAY DIVISION
March 2025

Special Hauling Permits



This graph shows the special hauling permits that are facilitated and issued for the operation of vehicles exceeding the maximum roadway weight, width, height and/or length that are considered ‘oversized’.

Utility Locating (OUPS)



This graph shows the number of Ohio Utility Protection Service (OUPS) markings are ticketed each month. Marking these tickets is a critical public safety measure before excavation work begins to ensure utility lines are properly identified to prevent accidental damage and avoid service disruptions.

FORESTRY DIVISION

March 2025

Overview

The forestry division manages the health and safety of New Albany trees through tasks such as pruning and removal. Work is planned seasonally according to the biological needs of different tree species. The division is also responsible for the safe operation of chainsaws, commercial wood chippers and the city bucket truck, along with establishing and maintaining traffic control as needed.

Pruning

The forestry division performed tree assessments and pruning along James River Rd. It is important to check the health and potential hazards for the trees as the weather turns to spring.

Removals

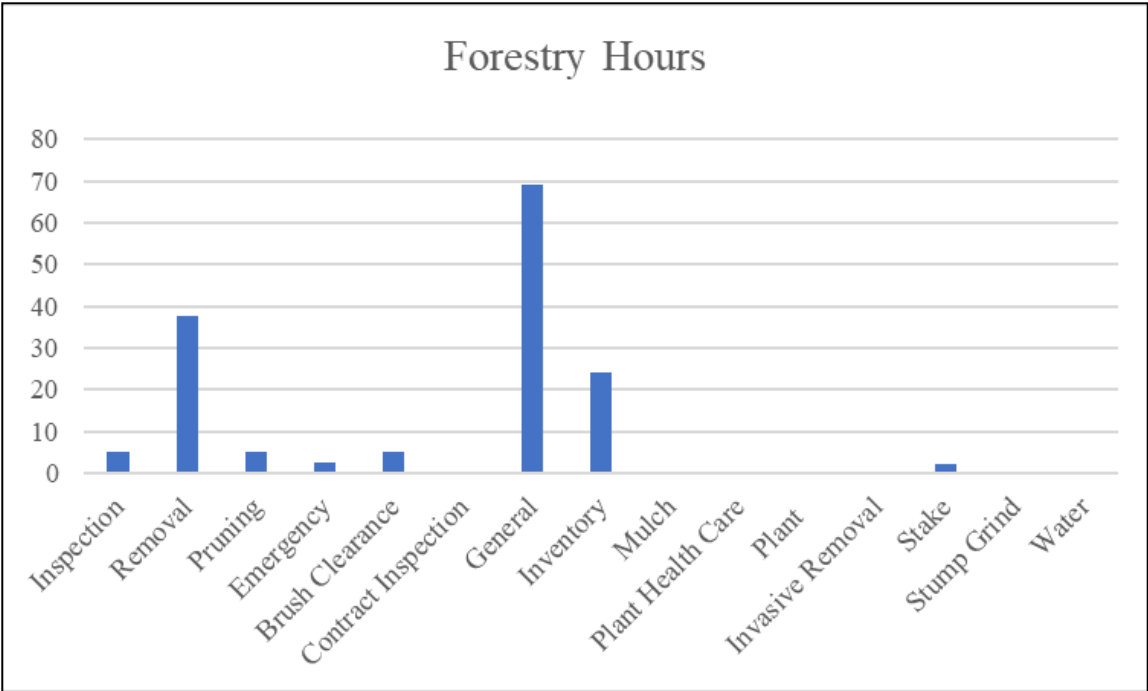
The division removed several trees lining James River Rd. due to windy conditions, including ones on Scarborough Hall Dr., Baughman Grant, Ealy Crossing Dr. and Harlem Rd. The division started updating the GIS data for the city trees. It is important to keep this information current as trees are removed and added, ensuring an accurate representation of city trees.



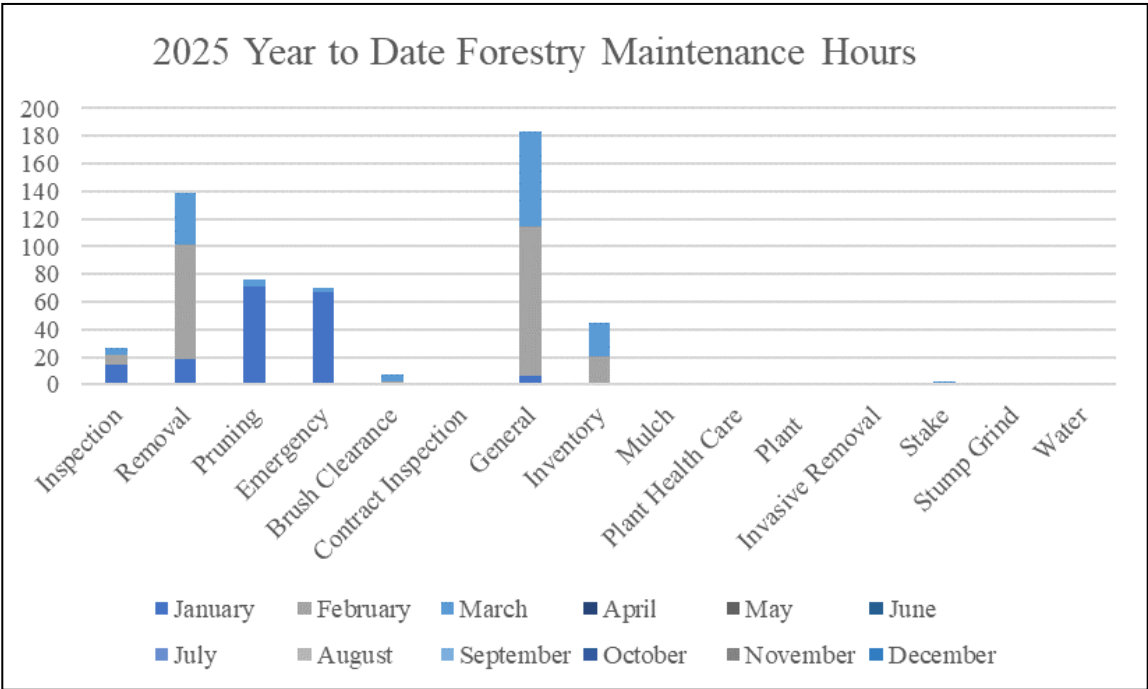
Otavio Bressan removing a fallen tree along James River Park

FORESTRY DIVISION
March 2025

Forestry Hours



This graph shows the number of hours the division spent on each respective category. Tracking these hours helps ensure that resources are effectively allocated to key tasks, enabling the division to prioritize essential tree care, removal and maintenance throughout the city.



This graph shows the number of hours year-to-date during each month the division spent on each respective category.

FLEET DIVISION

March 2025

Overview

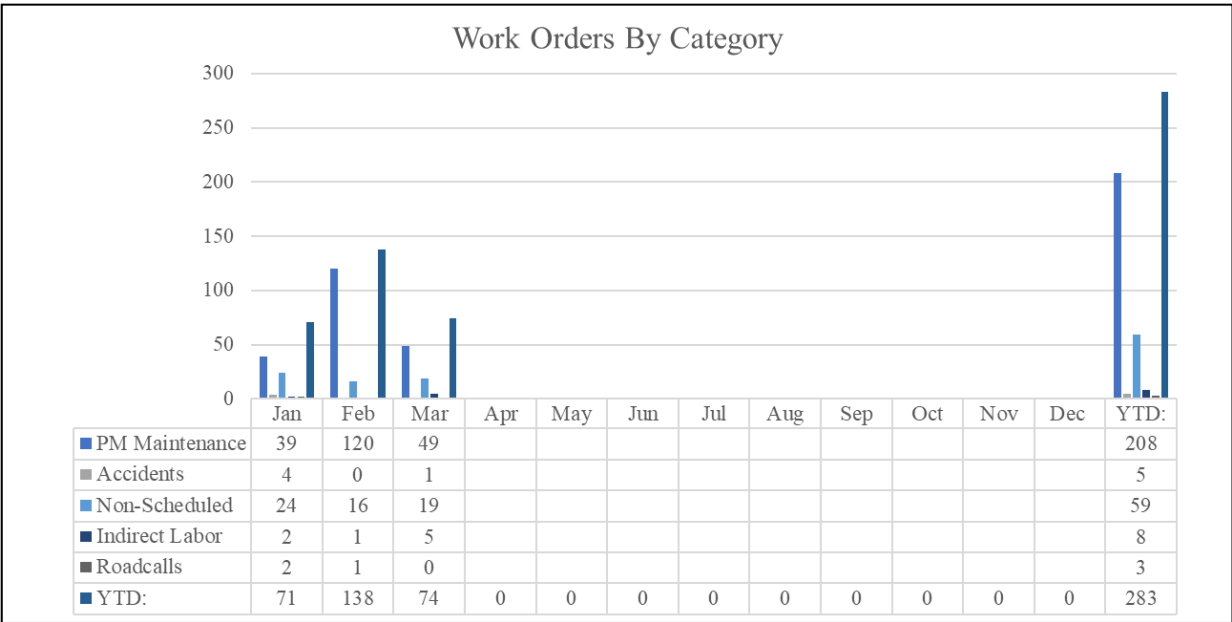
The city fleet division actively maintains all city-owned vehicles and equipment in a manner consistent with the demonstrated quality and aesthetic of New Albany.

Fleet Maintenance

The division prepared heavily for the upcoming summer operations. With winter weather gone, the division worked on transitioning equipment into spring and summer readiness.

The division participated in a Cummins diagnostics training course provided by the Motor & Equipment Manufacturers Association (MEMA). The training offered insights and practical techniques for diagnosing issues with Cummins engines and fuel systems—skills that will enhance the division's operational efficiency moving forward.

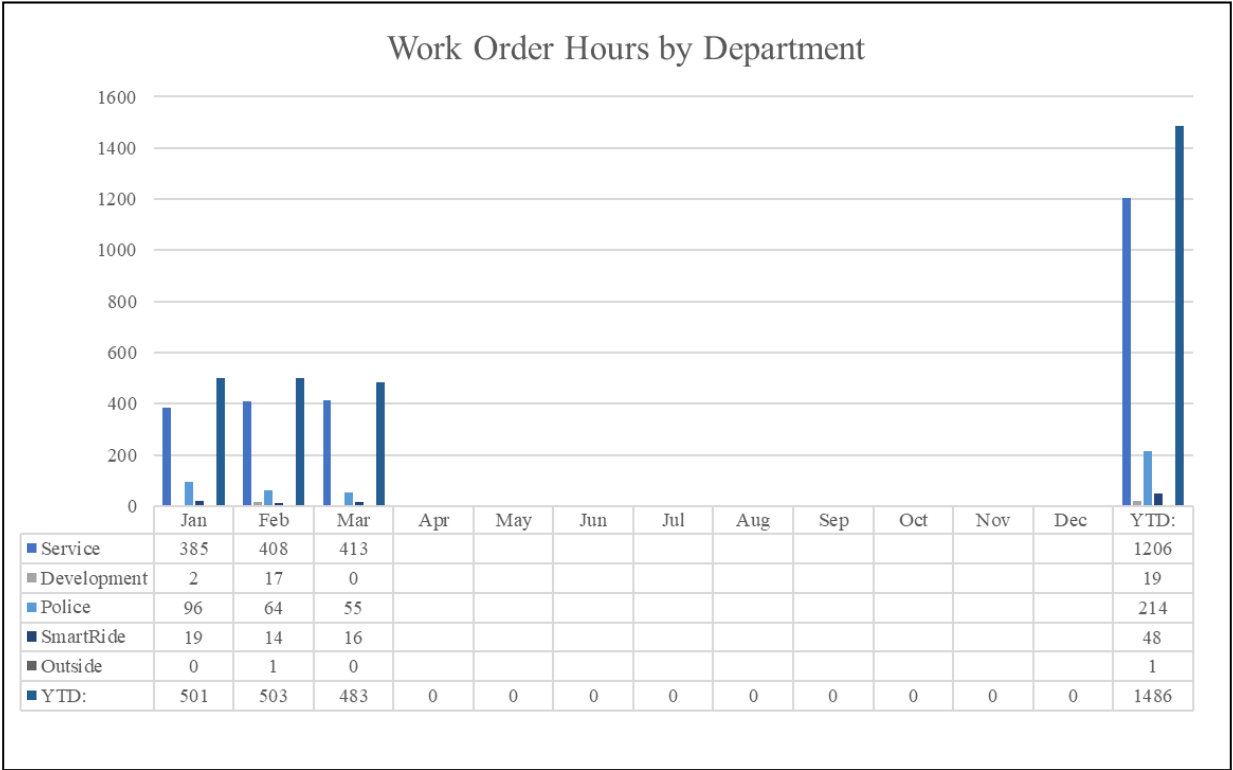
Fleet Work Orders



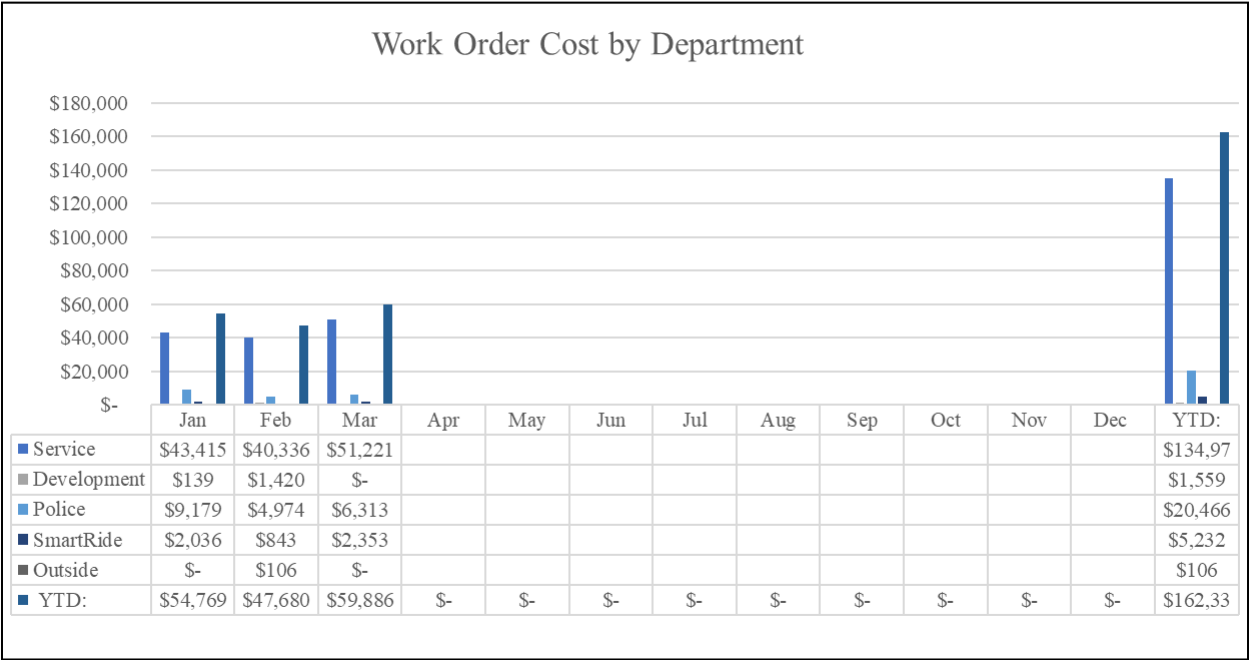
This graph shows the work orders year-to-date broken down by each category.

FLEET DIVISION
March 2025

Fleet Work Orders continued...



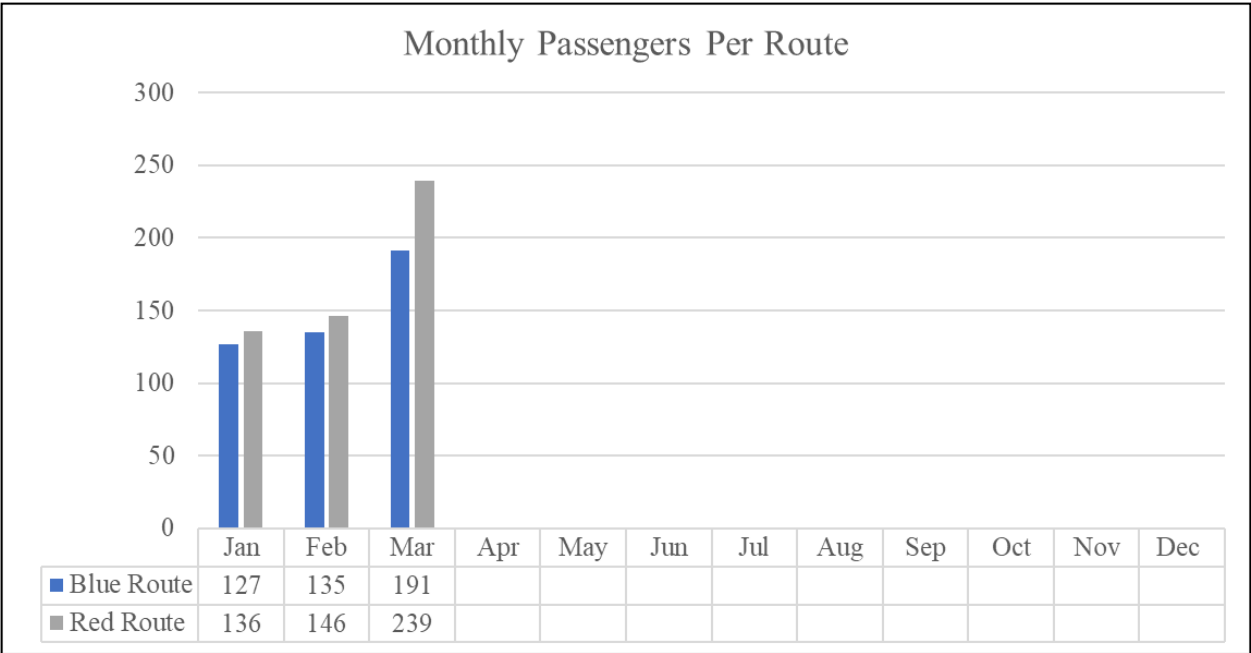
This graph shows year-to-date breakdown of work order hours by department.



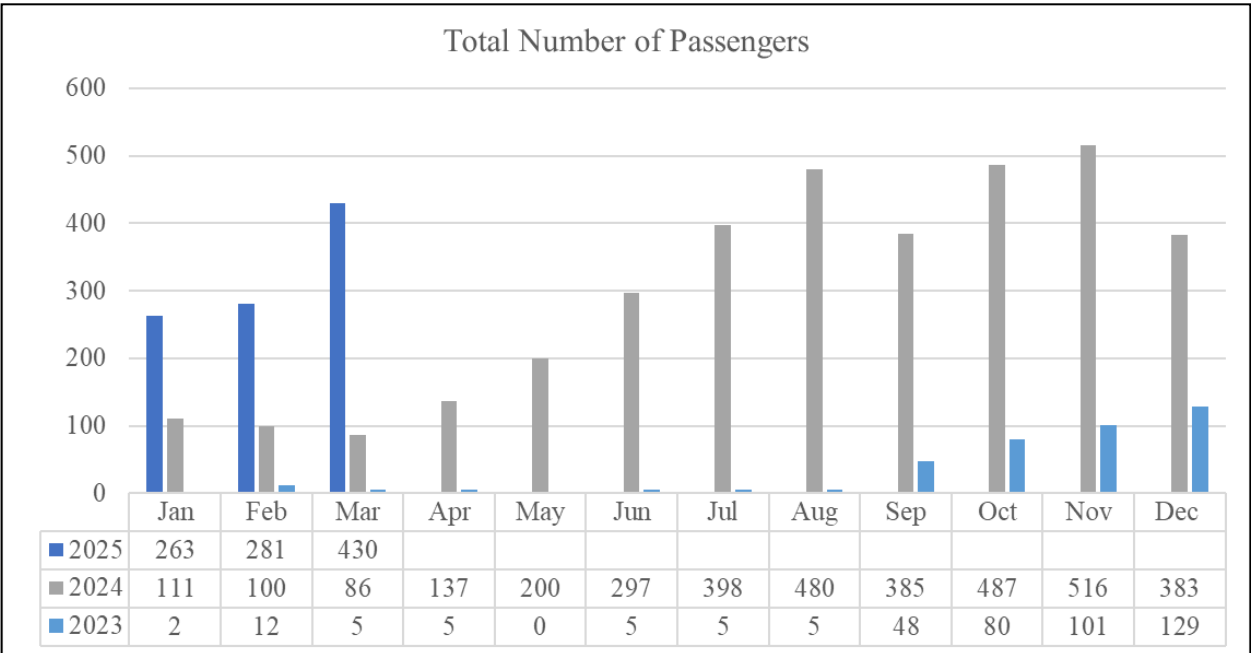
This graph shows the year-to-date breakdown of work order costs by department.

FLEET DIVISION
March 2025

New Albany SmartRide



This graph shows the number of monthly passengers on the blue and red SmartRide routes.



This graph shows the total number of monthly SmartRide passengers.