



PUBLIC SERVICE

Public Service Department

MONTHLY REPORT

June 2025

Professionalism

Integrity

Reliability

Quality

Pride

Inside This Issue:

Department Updates	2
Capital Projects	5
Streets	6
Traffic	7
Special Projects	8
Facilities	9
Utilities	10
Parks & Open Space	12
Right of Way	13
Forestry	17
Fleet	21

DEPARTMENT UPDATES

June 2025

Highlights

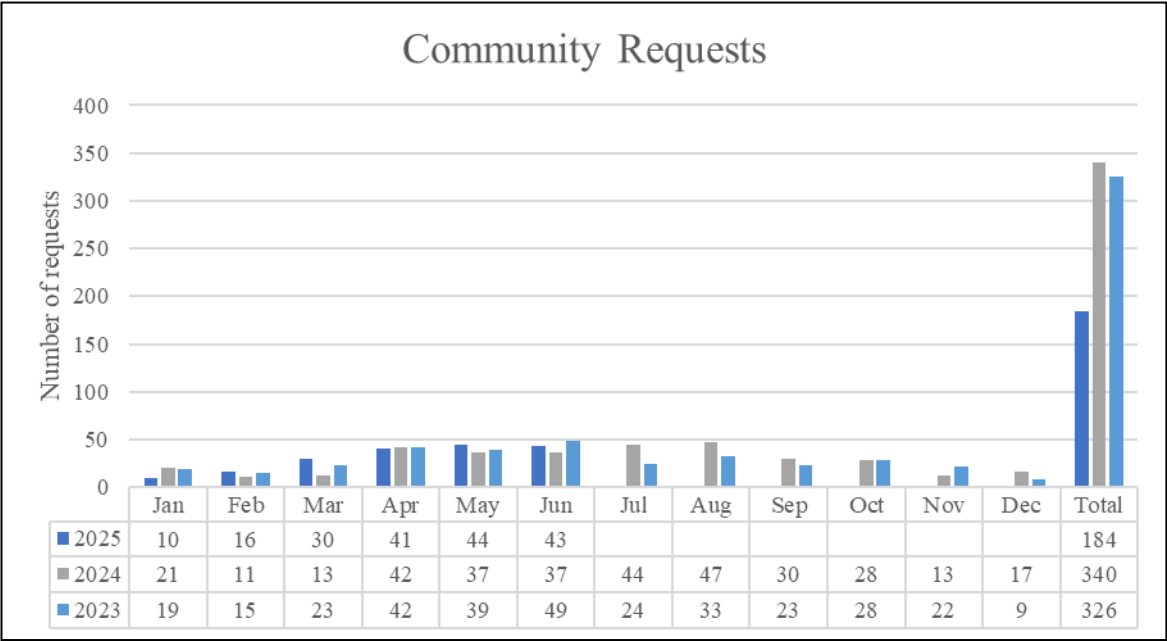
- **Scared Straight Training:** The public service department attended a mandatory training about computer security at Brick House Blue.
- **Safety Training:** 55 New Albany employees from multiple departments took part in a 10-hr safety training spanning over two days. This training was put on by SafeX and was held at public service department.
- **Buddy Up for Life Friendly Conversations:** Several New Albany employees participated in conversations with individuals at Buddy Up for Life. The organization offers a variety of classes including social skills and conversation, cooking, finance and technology classes designed specifically for individuals with Down Syndrome.
- **4th of July Preparation:** The public service department worked hard to prep for the 4th of July festivities all month. Thank you to everyone who helped out!



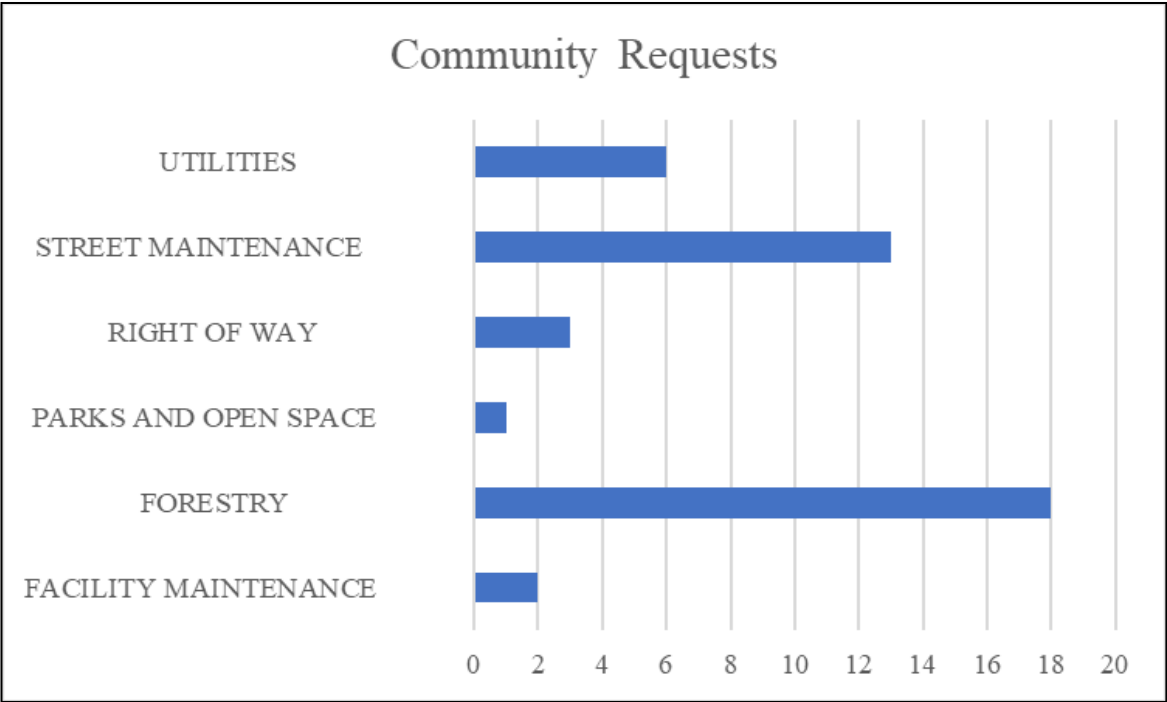
Justin Wilkinson at Buddy Up for Life event

DEPARTMENT UPDATES
June 2025

Community Requests



In June 2025, the department received a total of 43 community requests.

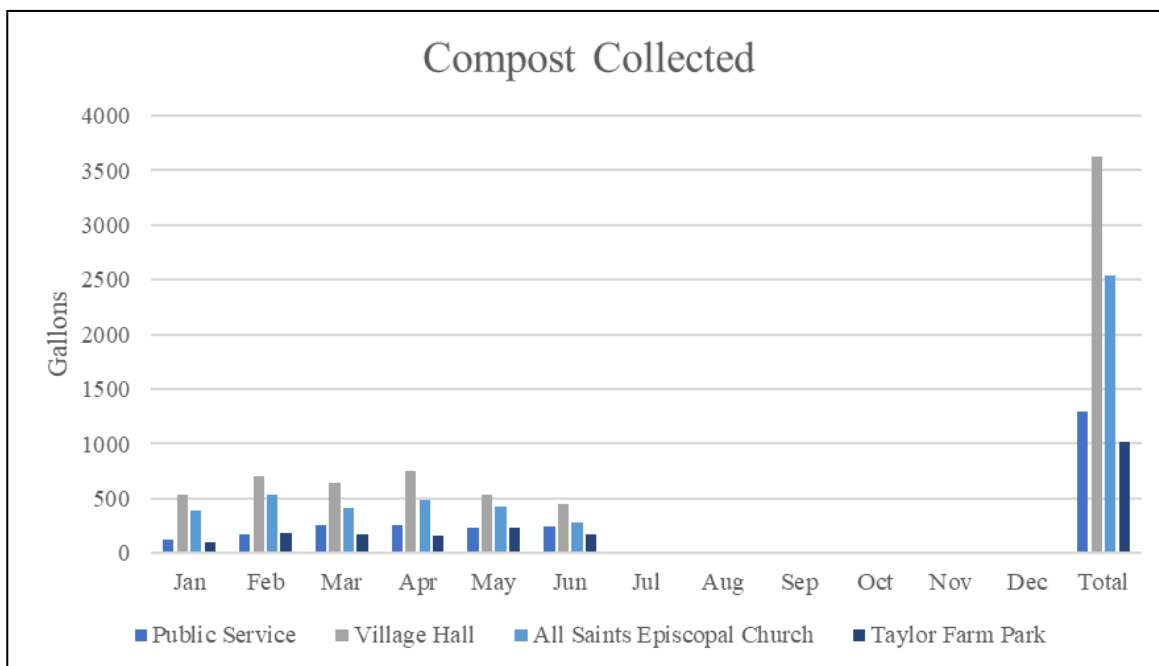


This graph represents the types of requests received from residents for public services.

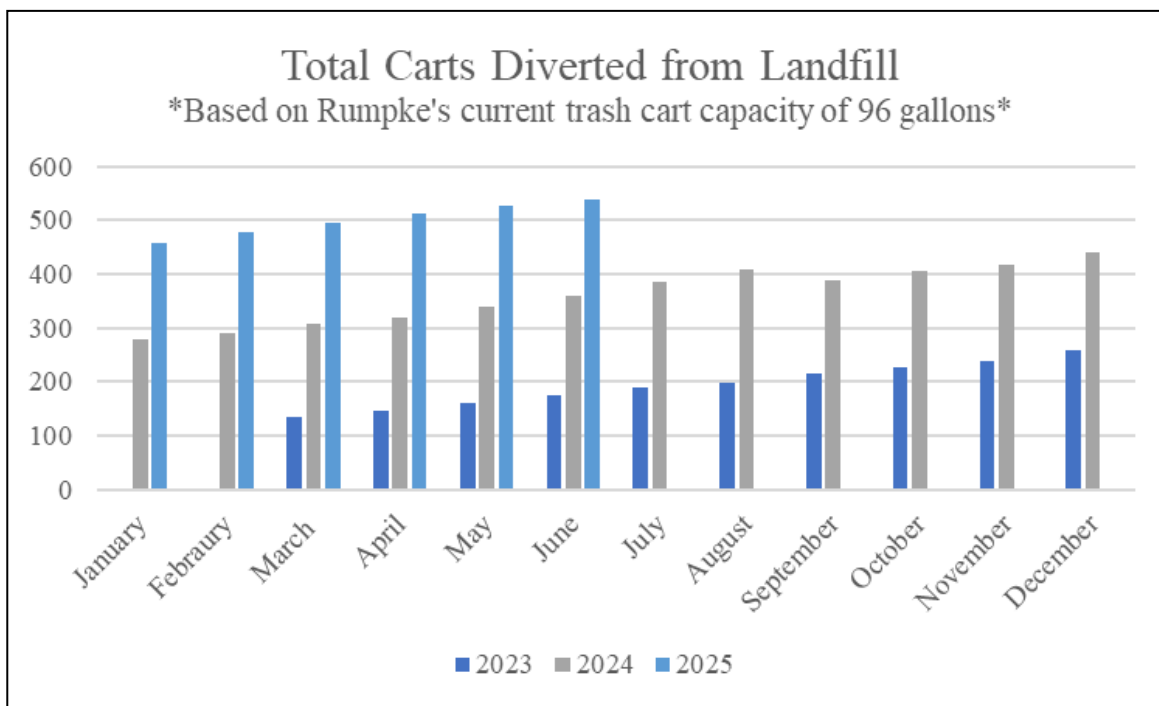
DEPARTMENT UPDATES

June 2025

Composting



This graph illustrates the volume of compostable waste collected from four key locations across the city, supporting the city's ongoing sustainability efforts. These initiatives help reduce landfill waste and promote environmentally responsible practices.



This graph shows the total number of Rumpke trash carts diverted from the landfill year-to-date, reflecting the city's commitment to reducing waste and enhancing recycling efforts.

CAPITAL PROJECTS

June 2025

Overview:

The department actively maintains and improves city owned infrastructure. Capital projects are large scale projects that maintain or improve public assets. All capital projects are presented to city council before starting a public bidding process and project construction.

Market Street Extension

General Contractor:

- Complete General Construction

Contract Amount: \$11.6M

- 2024 Capital Improvement Fund

Construction Schedule:

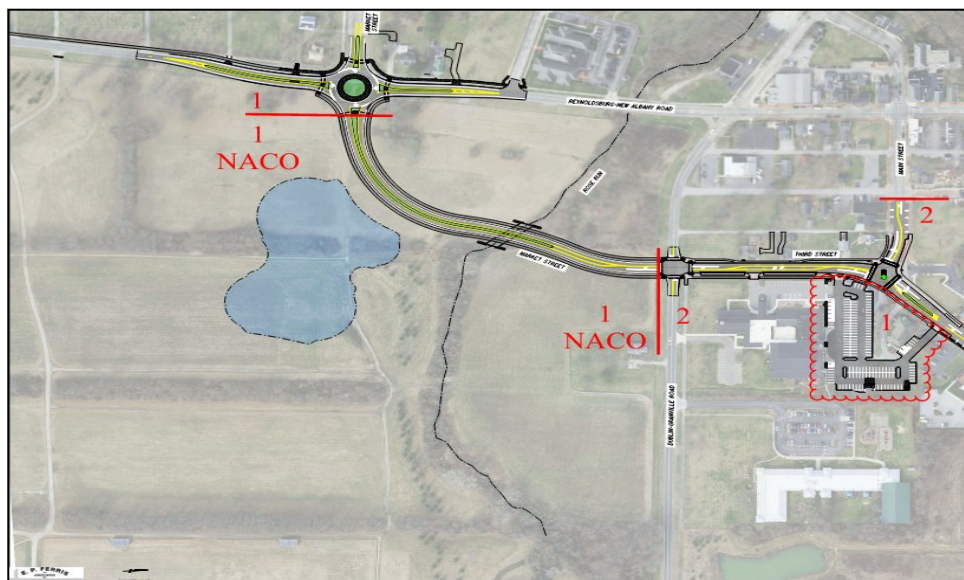
- Construction start date: March 2025
- Construction duration: 25 months

Project Description:

The 2020 strategic plan update identified the Market Street extension project as a priority roadway improvement project. The improvement will reduce traffic congestion in the village center and provide a more direct route to and from the SR-161/US-62 interchange.

Project Status:

The Market Street Extension Project will require a major road closure for the summer. SR-605 (Reynoldsburg-New Albany Road) will be closed from May 30 to approximately August 17 from Village Hall Road to Maplewood Cemetery to allow for construction of a roundabout at Market Street and Reynoldsburg-New Albany Road. The roundabout is still on track for August 17th opening date!



Market Street drawing

STREETS DIVISION

June 2025

Overview

The city street division actively maintains all city-owned infrastructure, roadside mowing, street sweeping and leaf collection in a manner consistent with the demonstrated quality and aesthetic of New Albany.

Pothole Restoration

With ongoing construction and heavy vehicles transporting equipment and materials, the streets have deteriorated. A crew member is sent out once a week to inspect roadways. The division repaired a pothole along Harrison Road by excavating the asphalt and gravel base and replacing both to ensure the perma-patch would adhere.



Harrison Road pothole prior to restoration



*Left: After Kenny Geiger and Keith Unterbrink stamped perma-patch
Right: Dennis Munsey rolling perma-patch*

TRAFFIC DIVISION

June 2025

Overview

The city traffic division actively maintains all city-owned street lights and signals in a manner consistent with the demonstrated quality and aesthetic of New Albany.

Annual Monitor Testing

Contractor, M.P. Dory, conducted the annual conflict/malfunction monitor testing on all city traffic signals. All the monitors passed testing but two, which needed spare monitors replaced. M.P. Dory replaced the two monitors. This is required to make sure they are functioning properly to catch any malfunctions with the intersections should one happen.

Traffic Sensor Adjustments

The division adjusted the delay on a traffic sensor at the intersection of Harlem Road and East Dublin-Granville Road and repaired a stuck sensor at the eastbound ramps of US-62 and SR-161. There were also detection issues at Central College Road and SR-605. The division adjusted the sensitivity of the detector to be less sensitive, which was causing false calls for a left turn.



*Left: Stuck sensor fixed at SR-605 and Central College Road intersection
Right: Delayed traffic sensor fixed at US-62 and SR-161 eastbound ramp*

SPECIAL PROJECTS DIVISION

June 2025

Overview

The city special projects division actively maintains the annual stormwater inspection program as required by Ohio EPA and providing direct support to all special events city wide.

Stone Wall Restoration

Special projects supervisor Steve Kidwell began installing three new concrete pads for the bike share program. New bike pads will be installed at Taylor Farm Park, Rose Run Park and COTA Park and Ride located on Forrest Drive.



Left and right: Steve Kidwell digging up grass to place concrete for bike share at Taylor Farm Park

FACILITIES DIVISION

June 2025

Overview

The city facilities division actively maintains all city-owned buildings and utility structures in a manner consistent with the demonstrated quality and aesthetic of New Albany.

Philip Heit Center Roof Cleaning

The division cleaned the roof drain on top of the Heit Center. The drains need to be cleaned periodically due to debris that accumulates on the roof. If the drains are not inspected regularly, water will accumulate and potentially cause leaks.



Tyler Myers clearing out the Heit Center roof drain

UTILITIES DIVISION

June 2025

Overview

The city utilities division actively maintains all city-owned utilities in a consistent manner that demonstrates the quality and aesthetic of New Albany.

Retention Pond Clearing

The division evaluated a retention pond along Kitzmiller Road and found pond outlet structures were clogged with debris. Using a backhoe, the debris was removed and the structure was cleaned out so water would flow as designed.



Matt Lycans and Daitan Rood removing debris from retention pond with the backhoe

Emergency Response

A damaged 12" sanitary sewer mainline was discovered after a private utility contractor installed a fiber duct directly through the existing pipe. To resolve the issue, the division coordinated the relocation of the fiber duct away from the sewer alignment in collaboration with the responsible utility contractor. Once the duct was successfully moved, contractors completed the structural repairs to the affected sewer segment. The contractor cut out a 4' section of damaged pipe and replaced it with a new section of pipe. Following the repair, a CCTV inspection was conducted to verify the integrity of the line, and any fouling or debris was promptly addressed by the contractor. Effective coordination throughout the process ensured timely resolution and prevented service disruptions.

UTILITIES DIVISION June 2025

Emergency Response continued...



*Left: 12" sanitary sewer main line damage
Right: Utility duct relocation*



12" sanitary sewer line repaired

PARKS AND OPEN SPACE DIVISION

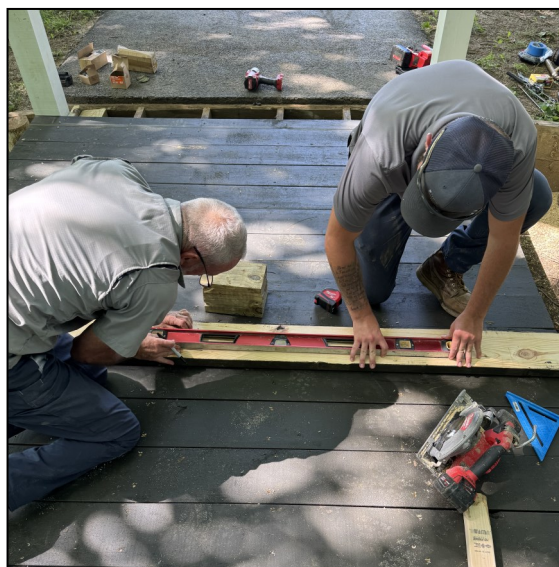
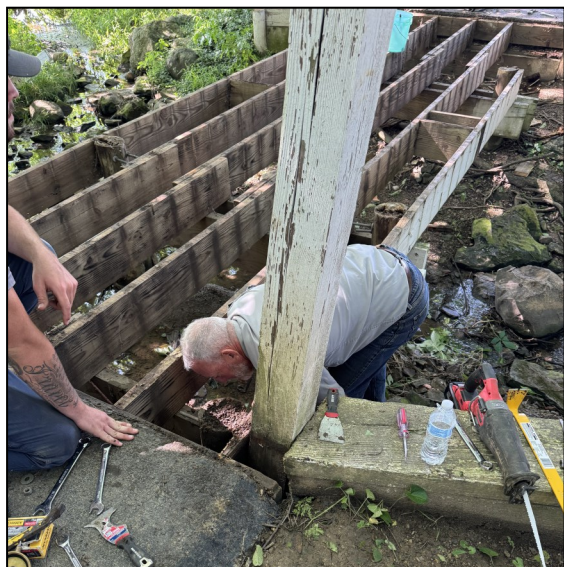
June 2025

Overview

The city parks and open space division actively maintains all city-owned parks, playgrounds and common areas in a manner consistent with the demonstrated quality and aesthetic of New Albany.

Pedestrian Bridge Rebuilt

The division rebuilt the pedestrian bridges at James River Road and Head of Pond Drive. The division set new posts, installed new railing, deck boards and repainted/stained the bridges.



Left: Rick Goldhardt prepping for new posts on pedestrian bridge
Right: Rick Goldhardt and Nate Fravel measuring wood for pedestrian bridge

Windsor Park Restoration

The division finished repairing, priming and painting all the pergolas at Windsor Park.



Left: Carl McNeal painting the pergola
Right: John Burkhart painting the pergola

RIGHT OF WAY DIVISION

June 2025

Overview

Right of way refers to a portion of city-owned land, varying from a roadway, tree lawns, sidewalks, bike lanes, street trees and street lights. Right of way also functions as a public and private utility corridor. Public storm sewers, sanitary sewers, waterlines and fiber optic lines are located within the right of way. Private utility providers are also permitted to locate within the right of way. The most common private utilities in the right of way are electric, natural gas, telephone, cable and fiber optic.

Village Center and Roundabout Maintenance Update

Midwest Landscape started maintenance on the brick tree wells along Main Street and Market Street and the large crosswalk at Raines Crossing. Midwest Landscape completed the Greensward Road/US-62 and Fodor Road/New Albany Road roundabouts. The US-62/Morse Road and US-62/Market Street roundabouts still need to be completed.



Left and Right: Brickwork being completed on Raines Crossing



Left and Right: Brickwork being completed on tree wells throughout the village center

RIGHT OF WAY DIVISION June 2025

Village Center and Roundabout Maintenance Update continued...



Left and Right: Roundabout maintenance on US-62/Lampton Park Road/Greensward Road

ADA Ramp Restoration

The division found a large hole in an ADA ramp at the corner of Main Street and High Street while walking the parade route. The ramp was temporarily repaired before the parade. The ramp was added to the street program this year to be fully ADA compliant.



*Left: ADA ramp before restoration
Right: ADA ramp after restoration*

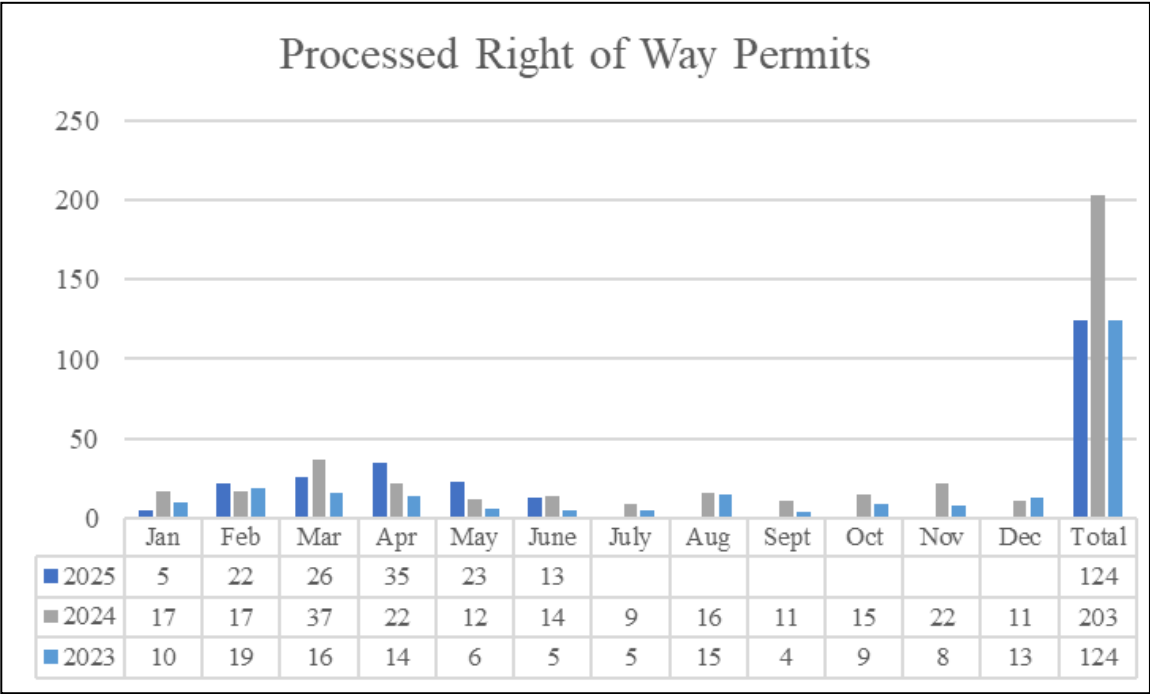
RIGHT OF WAY DIVISION
June 2025

The division actively coordinates with contractors working in the city public infrastructure, to ensure that they stay within the permitted areas, safely pothole crucial city utilities and restore any areas disturbed during construction. With an increasing number of right of way permits, these efforts are vital to maintain the integrity of the city infrastructure and minimize disruptions to residents and businesses. The division ensures compliance with regulations and the successful execution of 13 active permits.

Active Permits

- AT&T 9.0-25 (Central College E of 62)
 - AT&T 134.1-24 (605 and Central College)
 - AT&T 100.0-25 (7915 Smith’s Mill Road)
 - AEP 171.0-24 (New Albany Road E)
 - Baseline 16.0-25 (605)
 - Breezeline 10.0-25 (7915 Smith’s Mill Road)
 - Columbia Gas 96.0-23 (Upper Clarenton Drive)
- Spectrum (Innovation Campus Way W)
 - Spectrum 158.0-24 (DG/Market Street)
 - Spectrum 191.0-24 (Smith’s Mill Road)
 - Verizon 194.0-24 (NA Road E & West Campus)
 - Verizon 04.0-25 (Walton Pkwy)
 - Gas Tap Permits (All over the city)

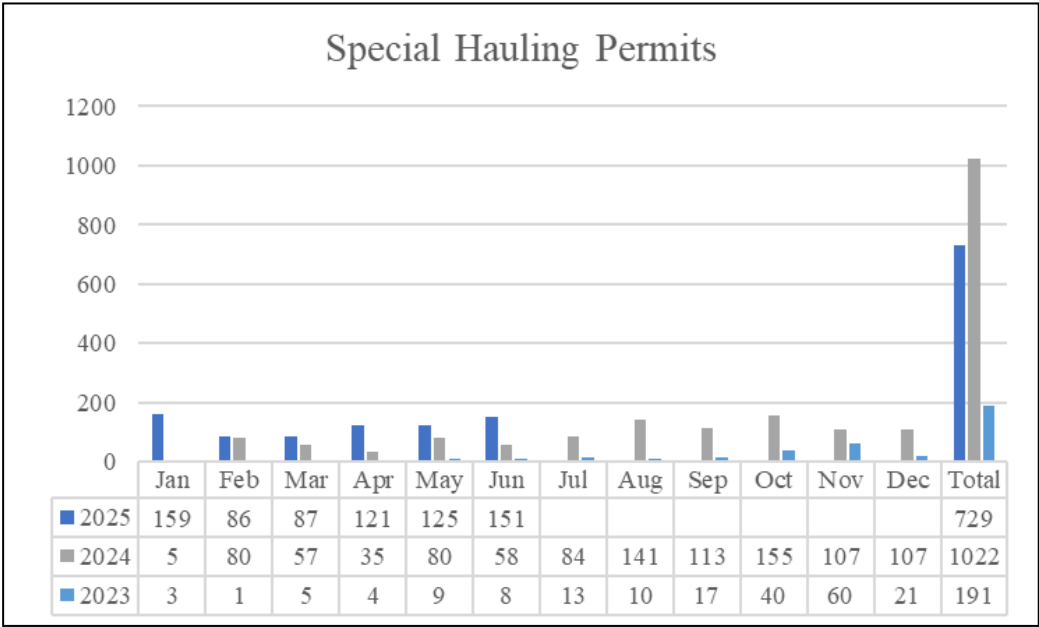
Right of Way Permits



This graph shows the number of permits issued each month by the city for utilities planned to be installed within the public right of way.

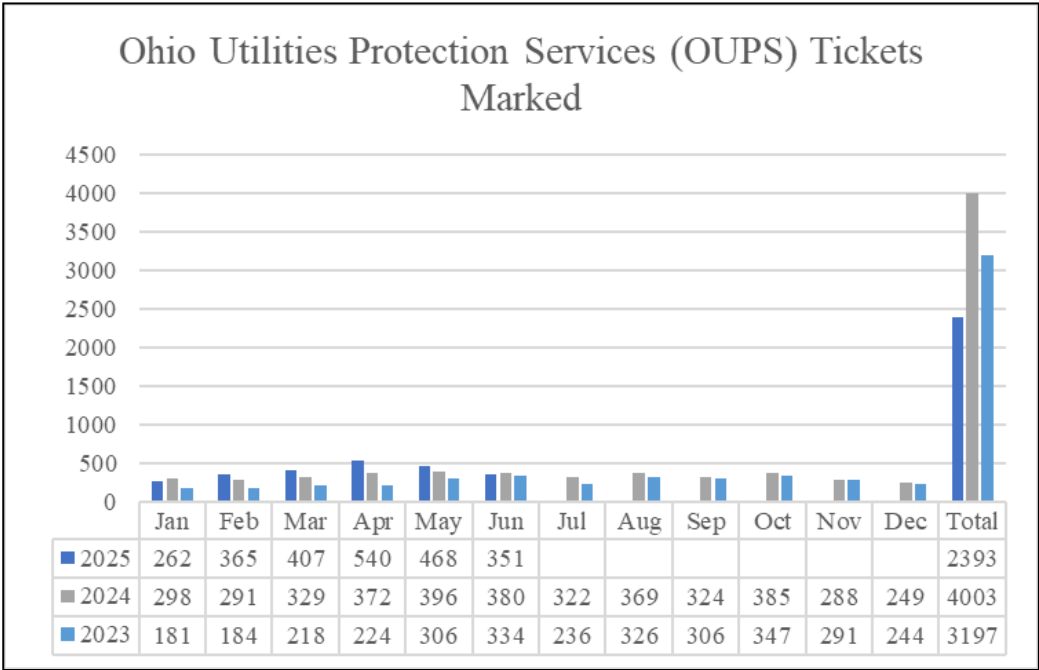
RIGHT OF WAY DIVISION
June 2025

Special Hauling Permits



This graph shows the special hauling permits that are facilitated and issued for the operation of vehicles exceeding the maximum roadway weight, width, height and/or length that are considered ‘oversized’.

Utility Locating (OUPS)



This graph shows the number of Ohio Utility Protection Service (OUPS) markings are ticketed each month. Marking these tickets is a critical public safety measure before excavation work begins to ensure utility lines are properly identified to prevent accidental damage and avoid service disruptions.

FORESTRY DIVISION

June 2025

Overview

The forestry division manages the health and safety of New Albany trees through tasks such as pruning and removal. Work is planned seasonally according to the biological needs of different tree species. The division is also responsible for the safe operation of chainsaws, commercial wood chippers and the city bucket truck, along with establishing and maintaining traffic control as needed.

Structural Pruning

The division started structural pruning young trees, especially the younger maples along Griswold Drive. Ideally, pruning should begin when a tree is very young (usually within a year or two of install). Structural pruning is an investment into the long-term health, structure and success of the tree. Trees that are properly pruned over time are less likely to be damaged in storms, require less maintenance as they age and are generally healthier and life spans.

Co-dominant branches are either reduced or removed to favor a single, dominant leader. Structural branches are pruned to favor optimal spacing along the main trunk, and lower 'temporary' branches are either removed or reduced to begin slowly establishing the lowest permanent limbs.



*Left: Before pruning a red maple with multiple co-dominant leaders (stems) and overall poor structure along Griswold Drive
Right: Red maple after pruning the co-dominant leaders (stems) were either removed or reduced to promote the development of a single, central leader*

FORESTRY DIVISION

June 2025

Clearance Pruning

Clearance pruning is still a top priority and one of the main functions of the division. Due to less competition for sunlight, trees grown in open environments tend to develop canopies that are shorter, broader and lower branched than their forest grown counterparts. As these low, wide branches enter the roadway they are either struck by vehicles (especially larger trucks) where they are damaged or torn from the tree or they encourage trucks to drive closer to the middle of the road and on-coming traffic.

The division clearance pruned along New Albany Links Drive, Southfield Road, Joysmith Circle, Griswold Drive and Camden Drive. The pruning is most noticeable on middle aged/maturing trees that are just beginning to interfere with traffic. At this age, the street side is typically raised to the lowest permanent primary branch (first order branch, originating from the trunk). As the tree continues to age, and increase in height, future clearance will focus on removing only secondary branching (branches off of the primary branch) and smaller temporary branches. This is generally less noticeable, and the trunk to crown ratio on the street side will begin to look more natural.



Left: Gabe Hilts and Lance Preston working along New Albany Links Drive pruning low hanging freeman maple trees

Right: Freeman maples after crown raising along New Albany Links Drive

FORESTRY DIVISION

June 2025

Plant Healthcare Update

The honeylocust trees are improving throughout the city. Trees that had been completely bare a month ago following a pest outbreak, are now nearly fully leafed out. Defoliations that occur early in the growing season typically do not cause long-term health problems. The trees have time to set new leaves and plenty of growing season left to make energy for next season.

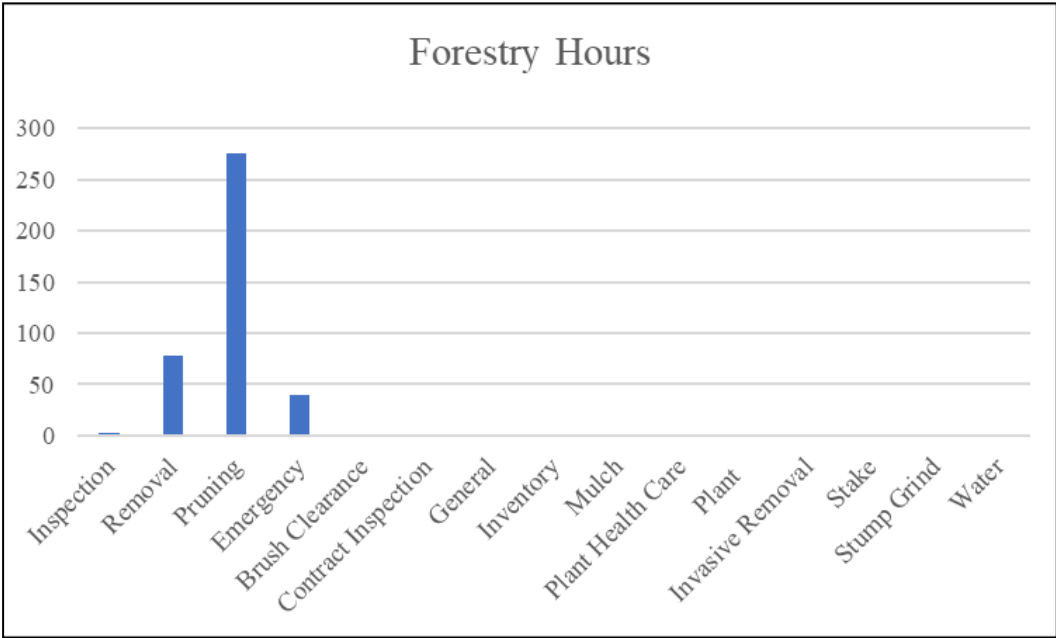


Left: Harlan Square honeylocust trees in May bare due to plant bug outbreak

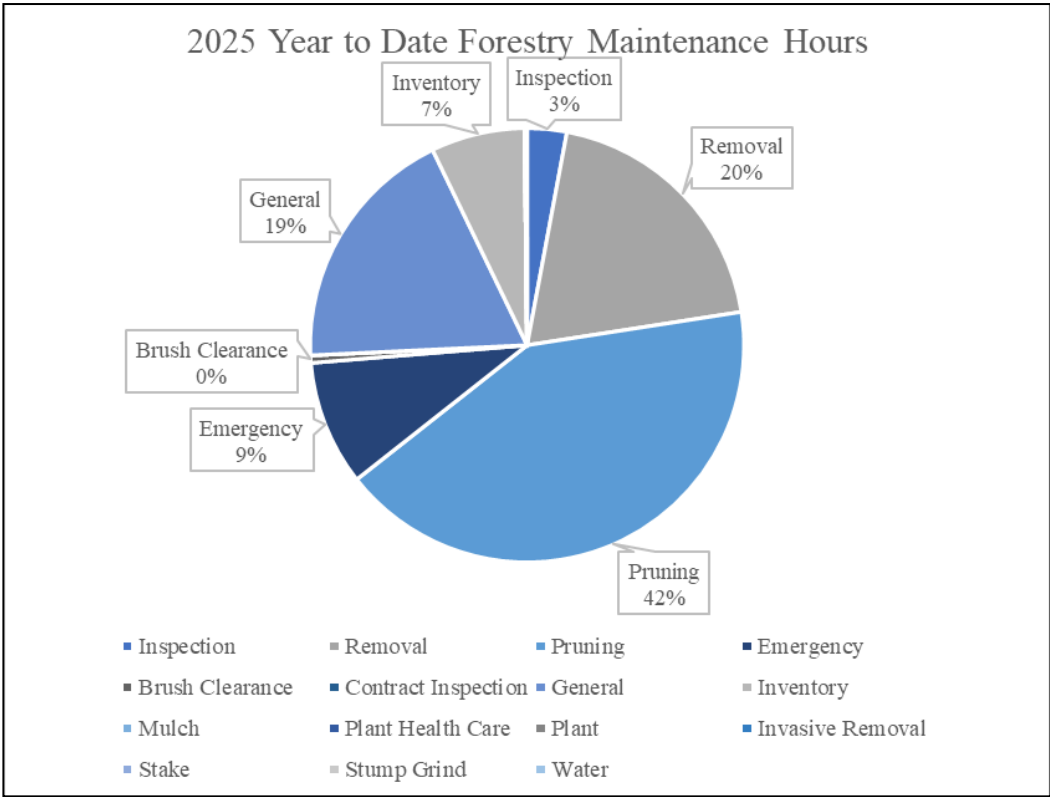
Right: Harlan Square honeylocust trees re-leafing out

FORESTRY DIVISION
June 2025

Forestry Hours



This graph shows the number of hours the division spent on each respective category. Tracking these hours helps ensure that resources are effectively allocated to key tasks, enabling the division to prioritize essential tree care, removal and maintenance throughout the city.



This graph shows the number of hours year-to-date during each month the division spent on each respective category.

FLEET DIVISION

June 2025

Overview

The city fleet division actively maintains all city-owned vehicles and equipment in a manner consistent with the demonstrated quality and aesthetic of New Albany.

Fleet Maintenance

The division began preparation for winter by initiating snow and ice truck maintenance, while continuing to support summer operations at full capacity. In addition to routine operations, the service department received a new piece of equipment: Vermeer Breaker Hammer Attachment.

Training Highlights

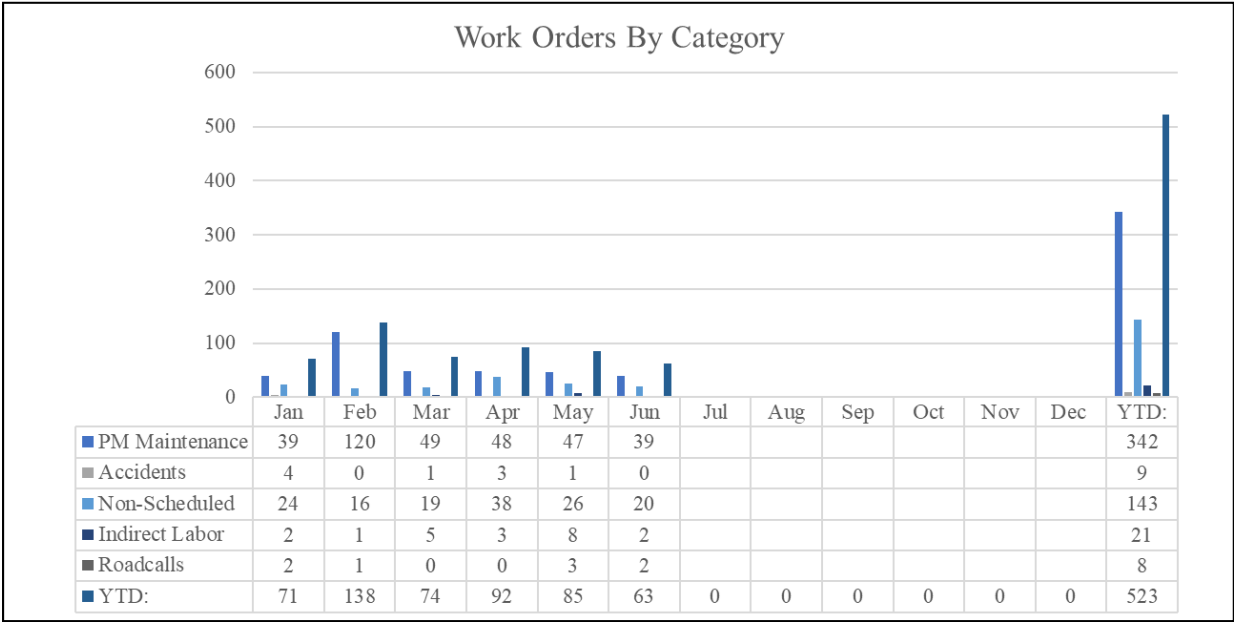
Andy Goldsberry and Chris Parsons participated in two hands-on training sessions focused on police and public service apparatus Whelen lighting systems:

Session #1 – Hardware Overview: The training covered hardware components including lightbars, expansion modules, sirens, amplifiers, control heads and vehicle-to-vehicle sync. Emphasis was placed on the WecanX network, core system architecture and the importance of integrated operations. Included onsite hands-on instruction and an introduction to the Whelen Learning Management System (LMS).

Session #2 – Software & Diagnostics: The training focused on Whelen Command software and LMS tools for programming, basic configuration changes and hardware diagnostics.

This specialized training enhances staffs in-house repair capabilities and allows us to provide more efficient, in-depth service related to Whelen systems.

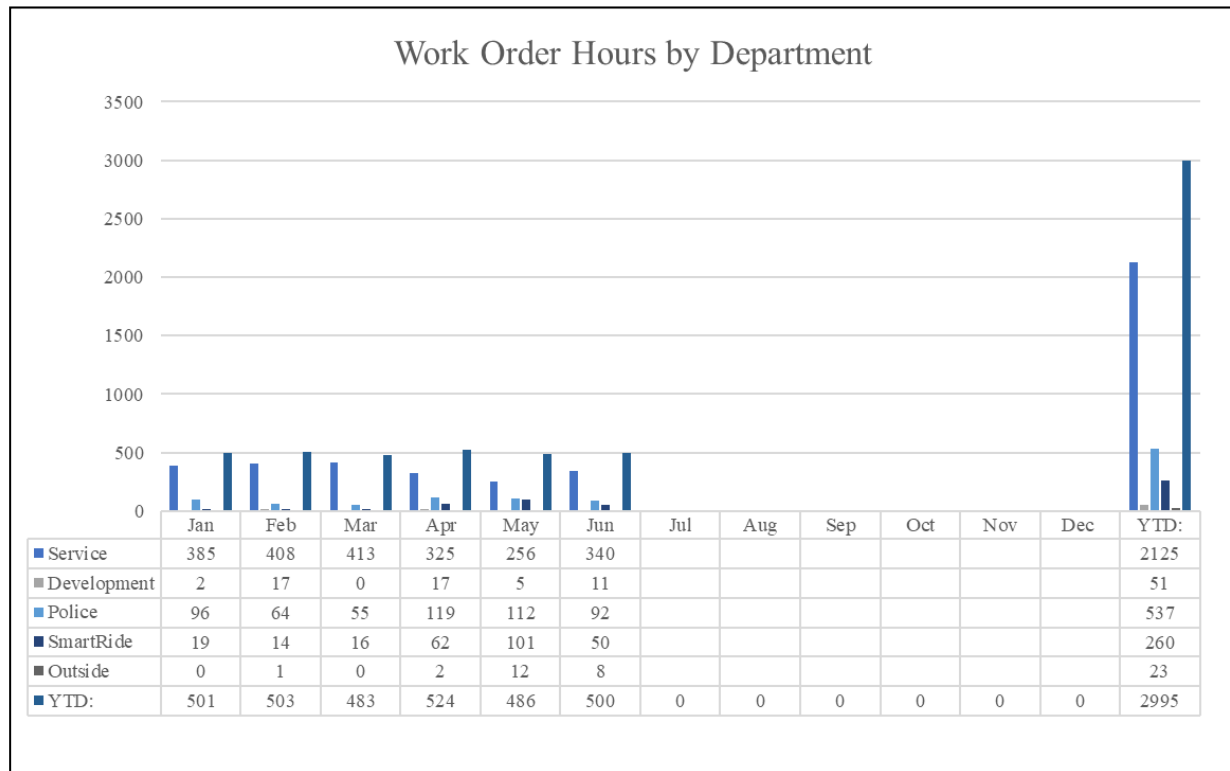
Fleet Work Orders



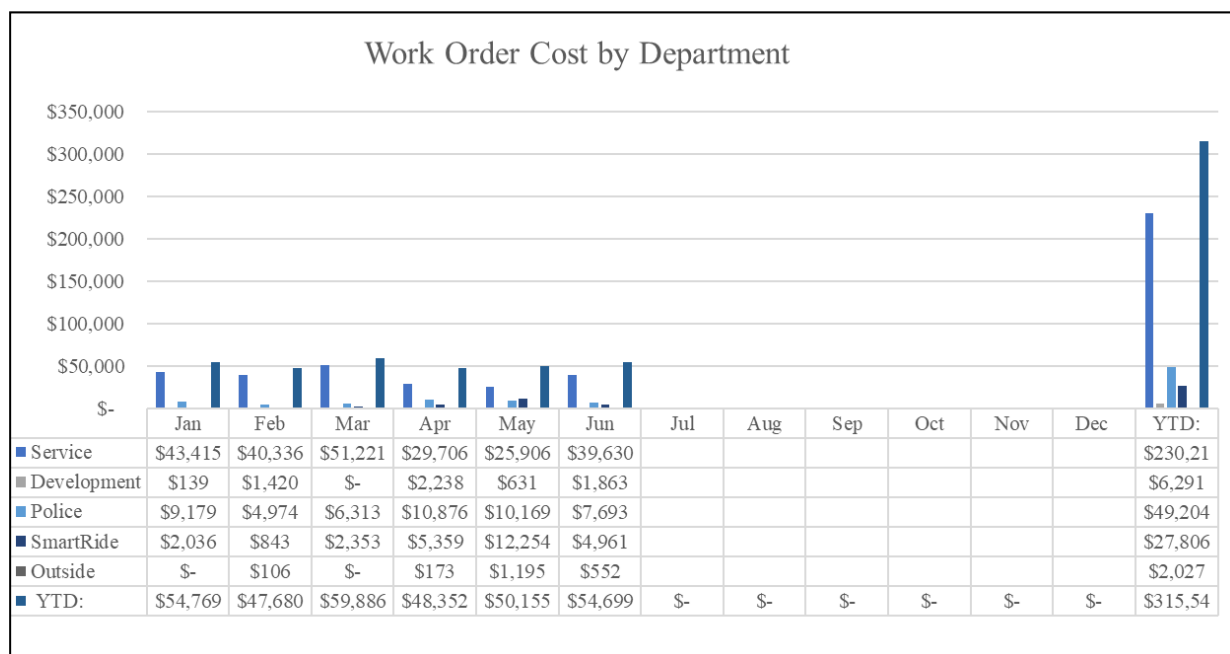
This graph shows the work orders year-to-date broken down by each category.

FLEET DIVISION June 2025

Fleet Work Orders continued...



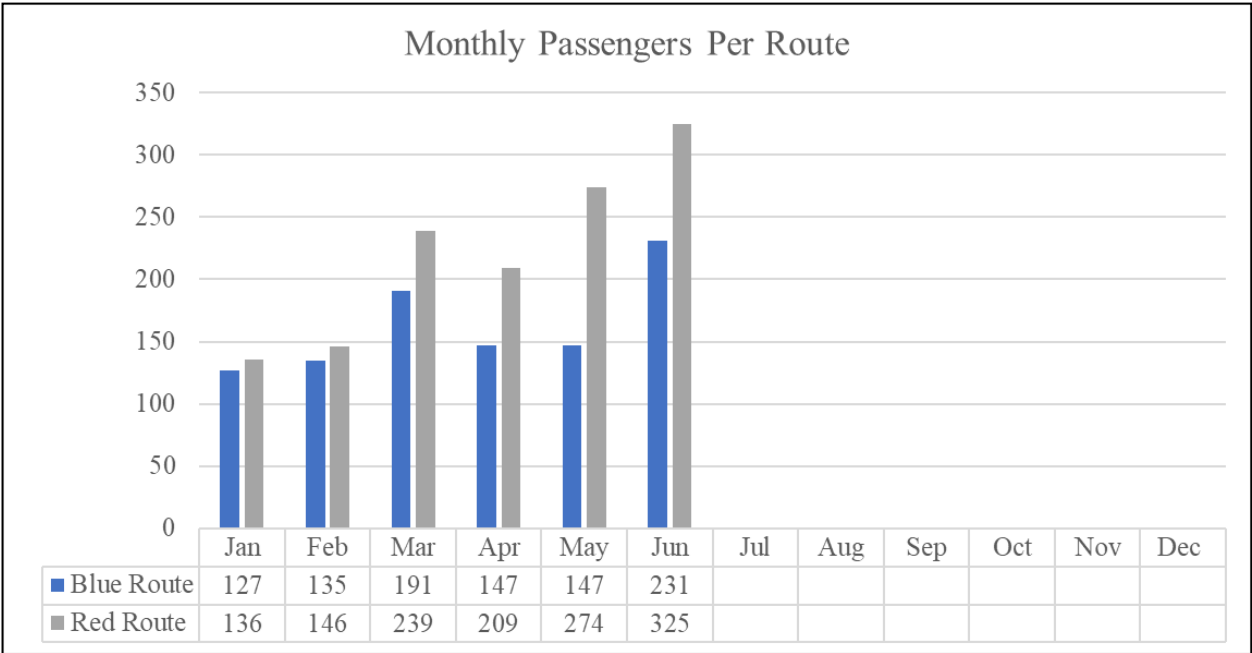
This graph shows year-to-date breakdown of work order hours by department.



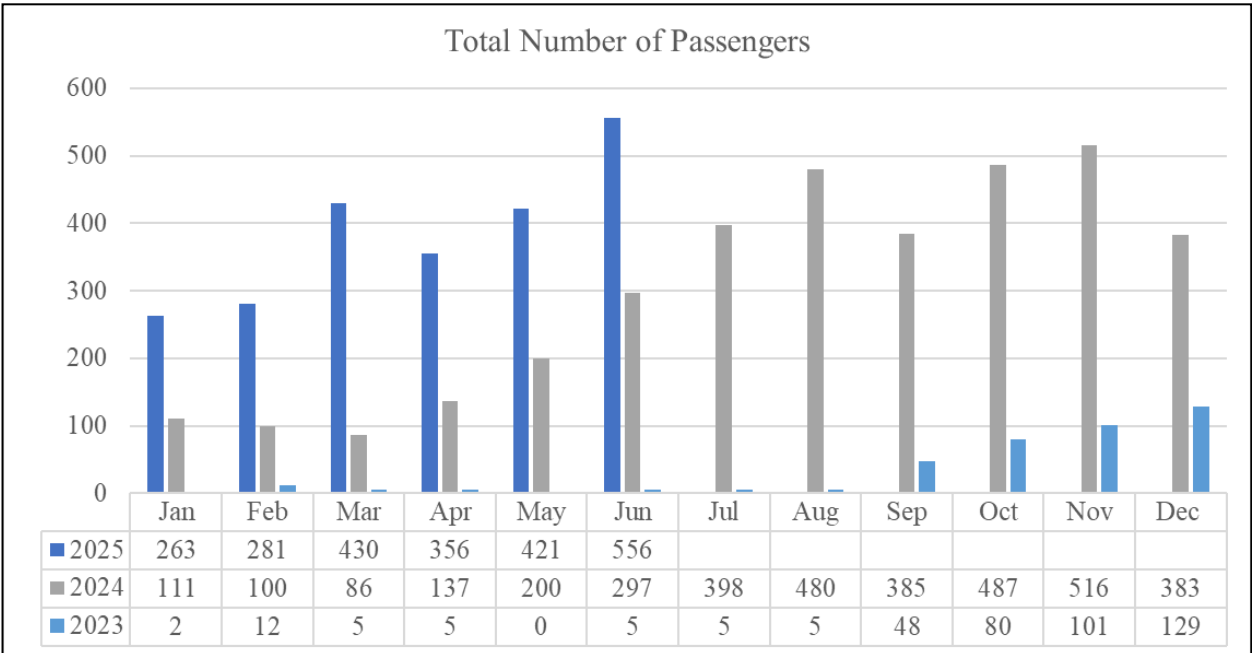
This graph shows the year-to-date breakdown of work order costs by department.

FLEET DIVISION
June 2025

New Albany SmartRide



This graph shows the number of monthly passengers on the blue and red SmartRide routes.



This graph shows the total number of monthly SmartRide passengers.