



PUBLIC SERVICE

Public Service Department

MONTHLY REPORT

July 2025

Professionalism

Integrity

Reliability

Quality

Pride

Inside This Issue:

Department Updates	2
Capital Projects	5
Streets	6
Traffic	7
Special Projects	9
Facilities	11
Utilities	12
Parks & Open Space	14
Right of Way	15
Forestry	19
Fleet	23

DEPARTMENT UPDATES

July 2025

Highlights

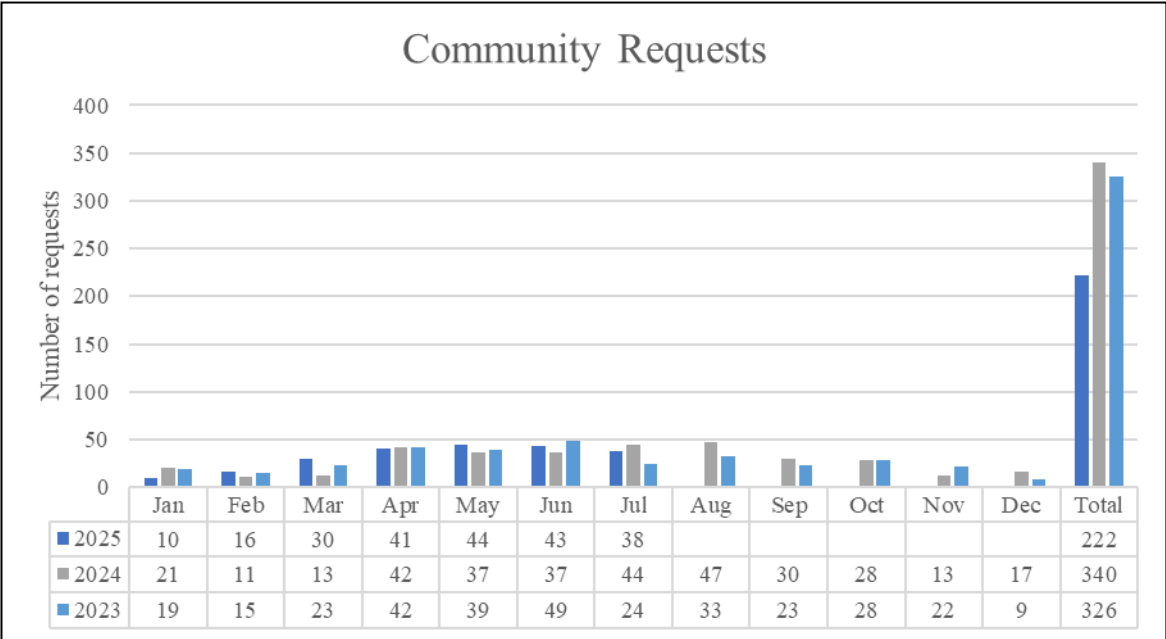
- **Multigenerational World:** Several public service employees attended a training about the Multigenerational World held at the Heit Center on July 8th.
- **Touch-A-Truck:** The public service department is gearing up for our annual Touch-A-Truck event. Administrative assistant Bridget Beck met with the New Albany Food Pantry to review the plan for our annual event.
- **HTI Hearing Test:** All public service employees received a hearing test through HTI's onset mobile audiometric testing on July 28th.
- **Independence Day Celebrations:** The public service department worked hard to keep the 4th of July festivities running smoothly. Thank you to everyone who helped out!



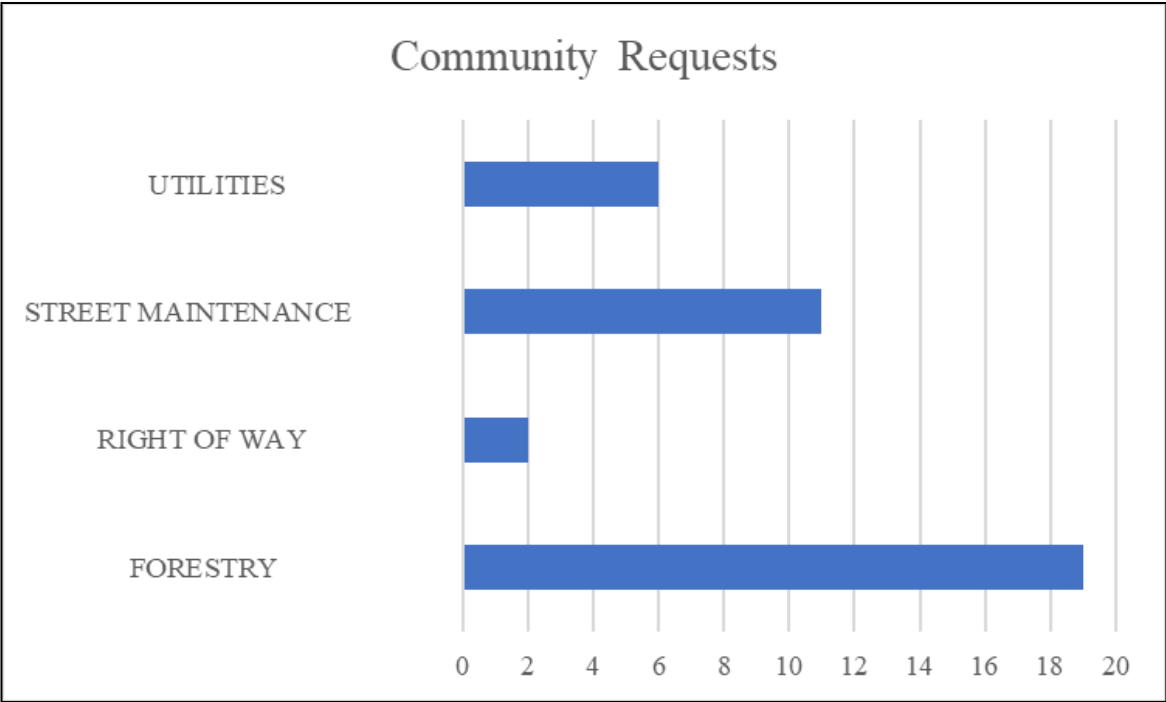
2025 Independence Day parade

DEPARTMENT UPDATES
July 2025

Community Requests



In July 2025, the department received a total of 38 community requests.

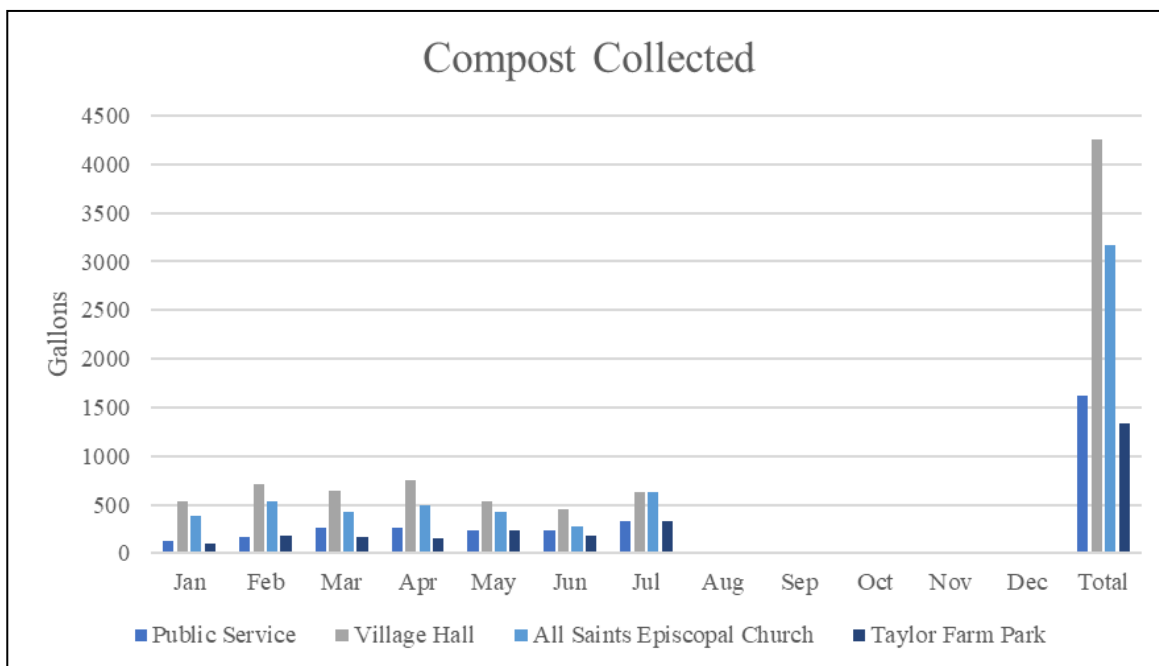


This graph represents the types of requests received from residents for public services.

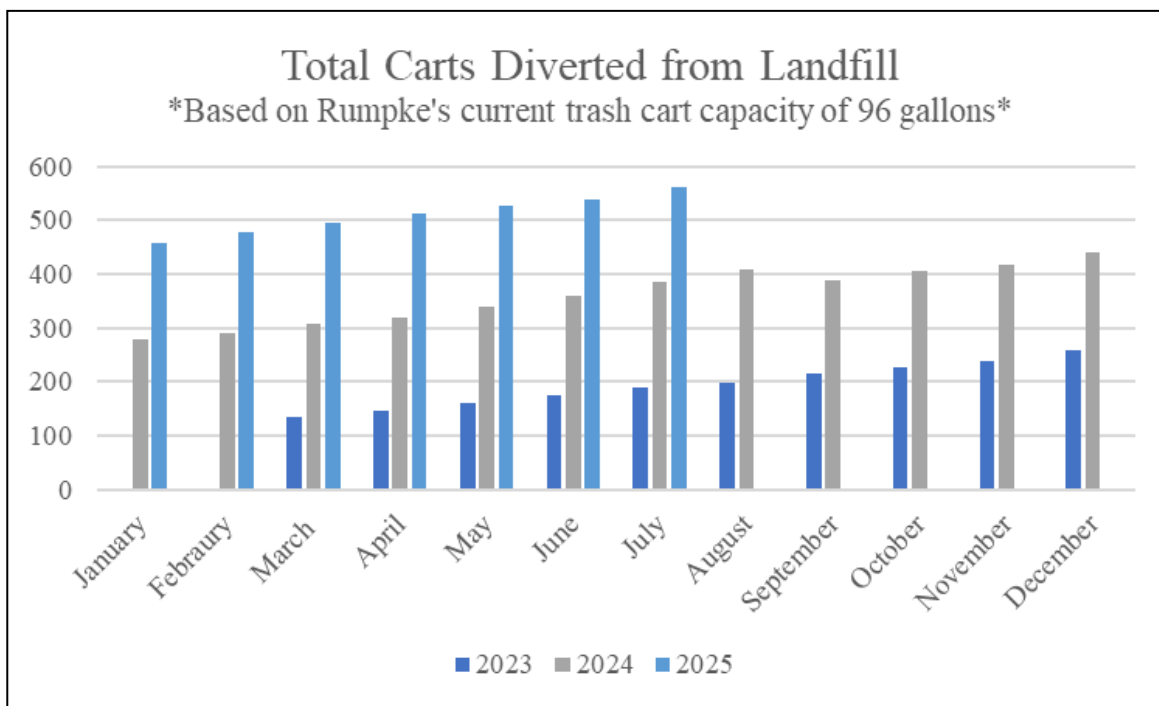
DEPARTMENT UPDATES

July 2025

Composting



This graph illustrates the volume of compostable waste collected from four key locations across the city, supporting the city's ongoing sustainability efforts. These initiatives help reduce landfill waste and promote environmentally responsible practices.



This graph shows the total number of Rumpke trash carts diverted from the landfill year-to-date, reflecting the city's commitment to reducing waste and enhancing recycling efforts.

CAPITAL PROJECTS

July 2025

Overview:

The department actively maintains and improves city owned infrastructure. Capital projects are large scale projects that maintain or improve public assets. All capital projects are presented to city council before starting a public bidding process and project construction.

Market Street Extension

General Contractor:

- Complete General Construction

Contract Amount: \$11.6M

- 2024 Capital Improvement Fund

Construction Schedule:

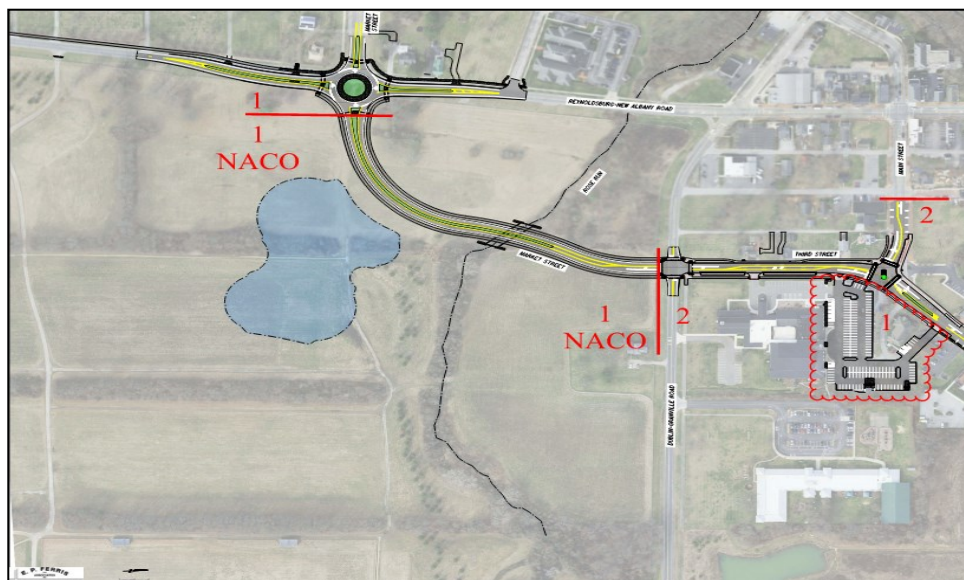
- Construction start date: March 2025
- Construction duration: 25 months

Project Description:

The 2020 strategic plan update identified the Market Street extension project as a priority roadway improvement project. The improvement will reduce traffic congestion in the village center and provide a more direct route to and from the SR-161/US-62 interchange.

Project Status:

The Market Street Extension Project requires a major road closure for the summer. SR-605 (Reynoldsburg-New Albany Road) from Village Hall Road to Maplewood Cemetery closed on May 30 and is scheduled to reopen on August 17 to allow for construction of a roundabout at Market Street and Reynoldsburg-New Albany Road. The roundabout is still on track for August 17th opening date!



Market Street drawing

STREETS DIVISION

July 2025

Overview

The city street division actively maintains all city-owned infrastructure, roadside mowing, street sweeping and leaf collection in a manner consistent with the demonstrated quality and aesthetic of New Albany.

Speed Limit Feedback Sign Installations

The division installed new speed limit signs. The majority of the signs installed are called radar speed feedback signs, also known as driver feedback signs. The signs are programmed to the street speed limit specifications with warning cue parameters so drivers are visually aware. The warning cues consist of: “Slow Down”, flashing lights and color changes (green for compliant speeds, red for speeding).

The second style of speed sign is a variable speed limit sign. This sign was placed on SR-605, just north of Chatham Green Drive. This sign displays the 25mph speed limit consistently, and is programmed to display 20mph during designated school hours. The sign provides a flashing dot cue when vehicles surpass the speed limit to indicative to the driver to slow down.



*Left: Radar speed feedback sign
Right: Variable speed limit sign*

TRAFFIC DIVISION

July 2025

Overview

The city traffic division actively maintains all city-owned street lights and signals in a manner consistent with the demonstrated quality and aesthetic of New Albany.

New Streetlight in Lansdowne

The city was approached by a resident in the Lansdowne area about adding streetlights on Chelsea Green. The resident was concerned about visibility in the area. The division worked with a contractor to install new pole bases, conduit and electric. The division then installed both streetlight poles. The division will restore the grass in the fall.



Left: Streetlight bases installed on Chelsea Green
Right: Streetlights after installation on the corner of Chelsea Green

ADA Pedestrian Crossing Maintenance

The division adjusted the volume for the ADA pedestrian crossing buttons at SR-605 & Chatham Green to make it louder due to residents' difficulty locating them.



ADA crosswalk button on SR-605 and Chatham Green

TRAFFIC DIVISION

July 2025

Streetlight Damaged

A streetlight was damaged at a construction site near Mink Street and Clover Valley Road. The division responded and picked up the damaged light. The streetlight will be replaced.



Streetlight on Mink Street and Clover Valley Road

Mid-Year Cabinet Checks

The division has initiated mid-year traffic cabinet checks to facilitate regular replacement of cabinet filters, which become very dirty. This process also allows the division to ensure that the utility protection system (UPS) units are functioning properly in the event of a power outage. Recently, a UPS failure occurred at the intersection of US-62 and Forest Drive, resulting in a power loss at that location. A new unit has since been installed.



Ian Hurst replacing cabinet filter

SPECIAL PROJECTS DIVISION

July 2025

Overview

The city special projects division actively maintains the annual stormwater inspection program as required by Ohio EPA and providing direct support to all special events city wide.

Sump Pump Repair

Special projects supervisor Steve Kidwell removed and repaired a damaged sump pump/gutter line on Odgen Woods Boulevard.

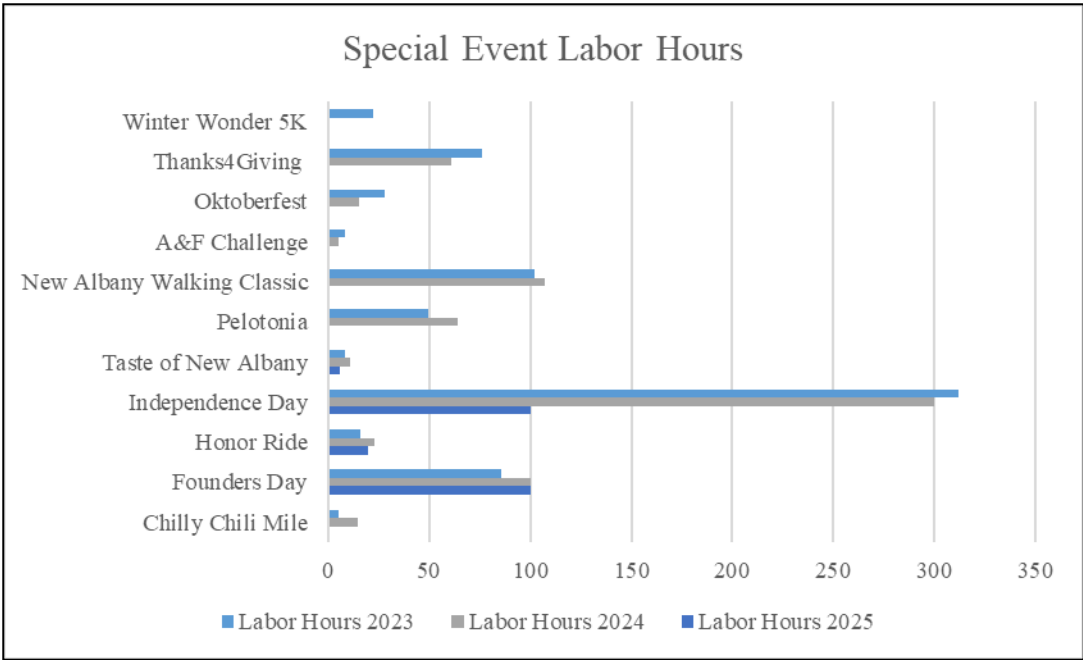


Left: Sump pump pipe before restoration

Right: Sump pump pipe after restoration

SPECIAL PROJECTS DIVISION
July 2025

Special Events Labor



This graph depicts the number of hours the public service department participates and assists with special events and projects throughout the year. In July, crew members helped with the Independence Day and taste of New Albany. The total number of 2025 hours supporting Independence Day reduced from 2024 due to the removal of the festival.



2025 Independence Day parade

FACILITIES DIVISION

July 2025

Overview

The city facilities division actively maintains all city-owned buildings and utility structures in a manner consistent with the demonstrated quality and aesthetic of New Albany.

Clover Valley Barn

A-1 Dumpsters demolished a barn located on Clover Valley Road, adjacent to one of the city lift stations. The property had previously been a private residence. When NACO purchased the property, they demolished the house but left the barn standing. Later, the city took ownership of the property, installed a sanitary lift station at the site and kept the barn for potential storage. In early spring, a storm caused the barn's roof to be blown off, which led to the decision to demolish the old barn.



Clover Valley barn demolition

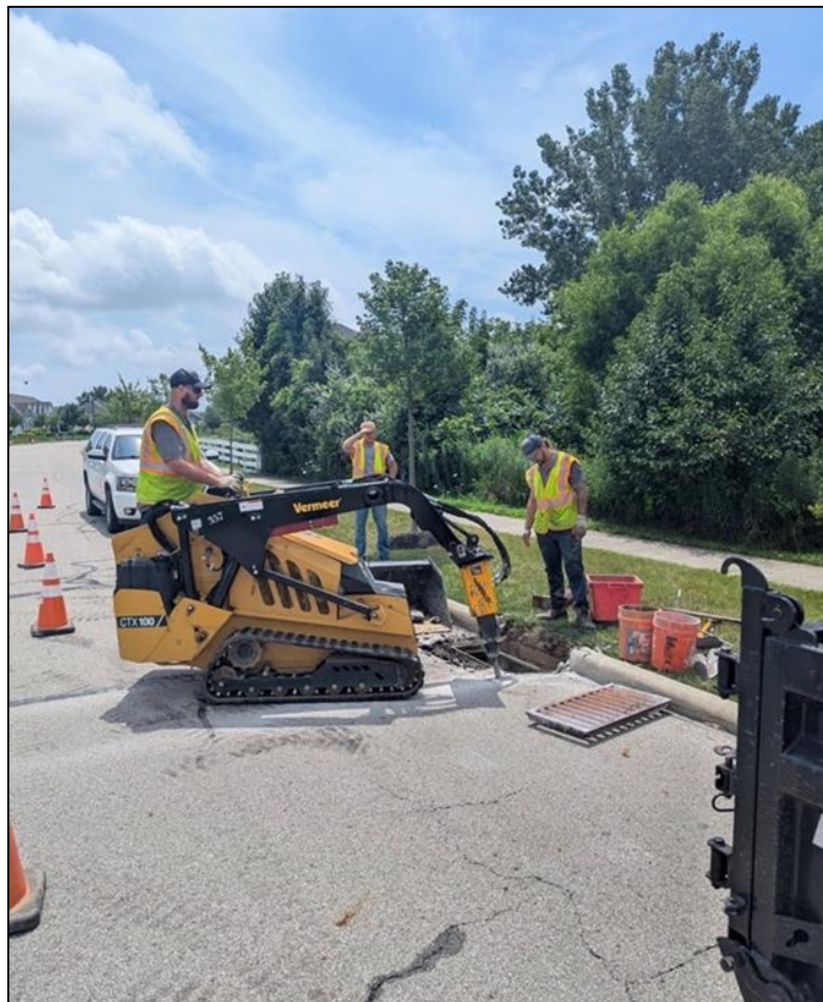
UTILITIES DIVISION July 2025

Overview

The city utilities division actively maintains all city-owned utilities in a consistent manner that demonstrates the quality and aesthetic of New Albany.

Curb Inlet Basin Inspections & Reconstruction

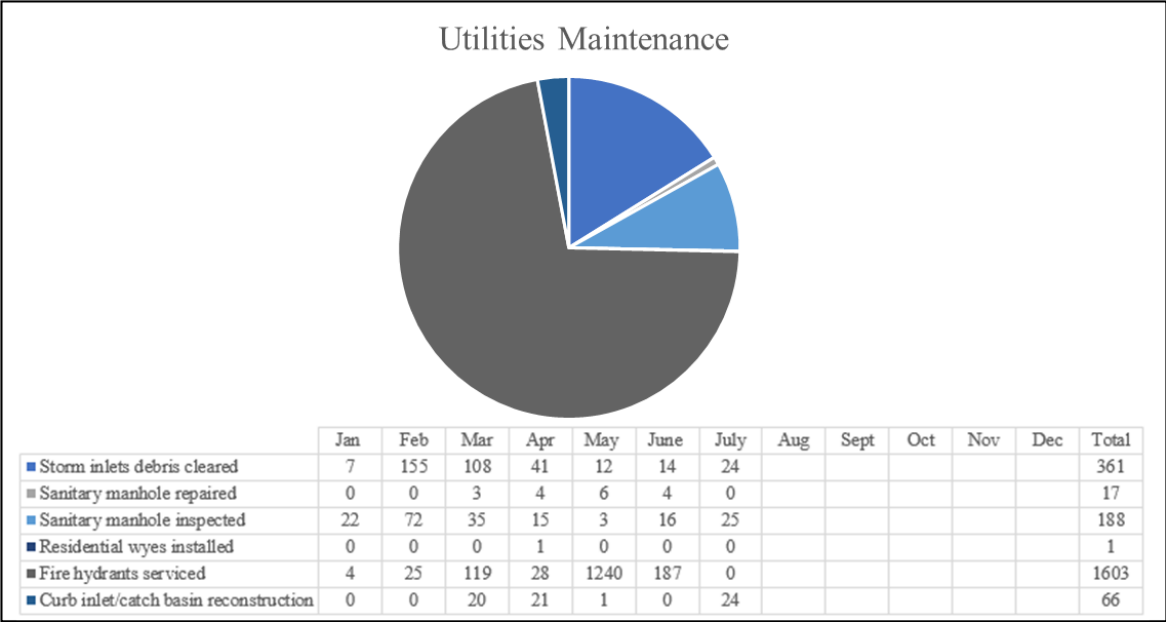
Curb inlet basin reconstruction was completed on both Stone Gate Drive and New Albany Links Drive to address aging and deteriorated infrastructure. A total of 5 curb inlet structures were reconstructed along Stone Gate Drive, while 19 structures were rebuilt along New Albany Links Drive. These improvements enhance stormwater management and ensure the long-term integrity of the roadway drainage systems.



Tommy Diamond and Daitan Rood completing the demolition of an existing storm sewer structure along New Albany Links Drive

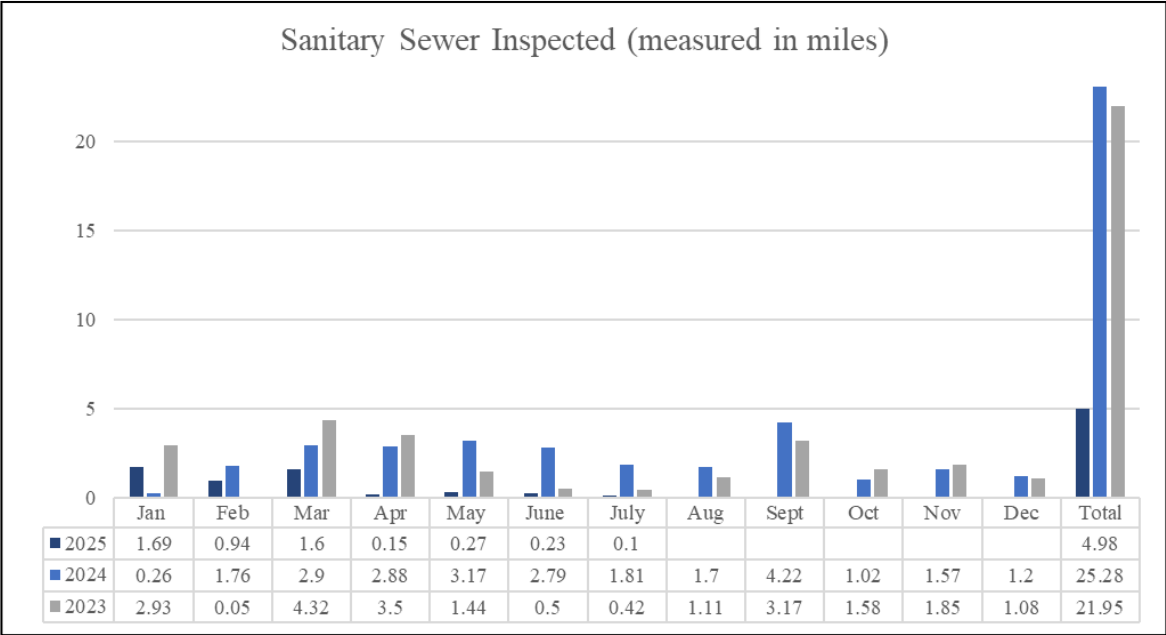
UTILITIES DIVISION
July 2025

Year-to-Date Utility Maintenance



This graph shows the year-to-date utility maintenance for sanitary sewers, storm sewers, wye installations and fire hydrants. These essential maintenance activities help ensure the city infrastructure operates smoothly, preventing potential disruptions and ensuring the safety and functionality of the water and sewage systems.

Sanitary Sewer Distance Inspected



This graph shows the distance of sanitary sewers the division has inspected year-to-date. Regular inspections are critical to identifying potential issues early, ensuring the proper function of the city sewer system and preventing costly repairs and disruptions.

PARKS AND OPEN SPACE DIVISION

July 2025

Overview

The city parks and open space division actively maintains all city-owned parks, playgrounds and common areas in a manner consistent with the demonstrated quality and aesthetic of New Albany.

Windsor Park Restoration

The division completed restoration work on the pergolas and brick areas at Windsor Park. Rocky Fork Company leveled all brick pads on both the north and south ends of the park.



Left and right: Carl McNeal and John Burkart finished priming and painting the pergolas



Left and right: Nate Fravel made repairs to all wood trim at the base of the pergolas

RIGHT OF WAY DIVISION

July 2025

Overview

Right of way refers to a portion of city-owned land, varying from a roadway, tree lawns, sidewalks, bike lanes, street trees and street lights. Right of way also functions as a public and private utility corridor. Public storm sewers, sanitary sewers, waterlines and fiber optic lines are located within the right of way. Private utility providers are also permitted to locate within the right of way. The most common private utilities in the right of way are electric, natural gas, telephone, cable and fiber optic.

Village Center Maintenance Update

Midwest Landscape completed the brick crosswalk repairs at the intersections of Fodor Road/Dublin Granville Road and Main Street/Dublin Granville Road. The brick tree wells were finished on Main Street/Market Street and US-62/Market Street.



Left and Right: Crosswalk brickwork being completed on the intersection of Dublin Granville Road and Main Street

Leisure Trail Restoration

Two asphalt companies started repairs on the leisure trails throughout the city. B&C Blacktop is doing mill and overlay and Premiere Patching is doing crack fill and reseal on the leisure trails. Both companies are projected to finish work in August.

RIGHT OF WAY DIVISION July 2025

Leisure Trail Restoration



*Left: Before mill and overlay was completed
Right: After mill and overlay completed*



*Left: Before sealing the leisure path
Right: After sealing the leisure path*

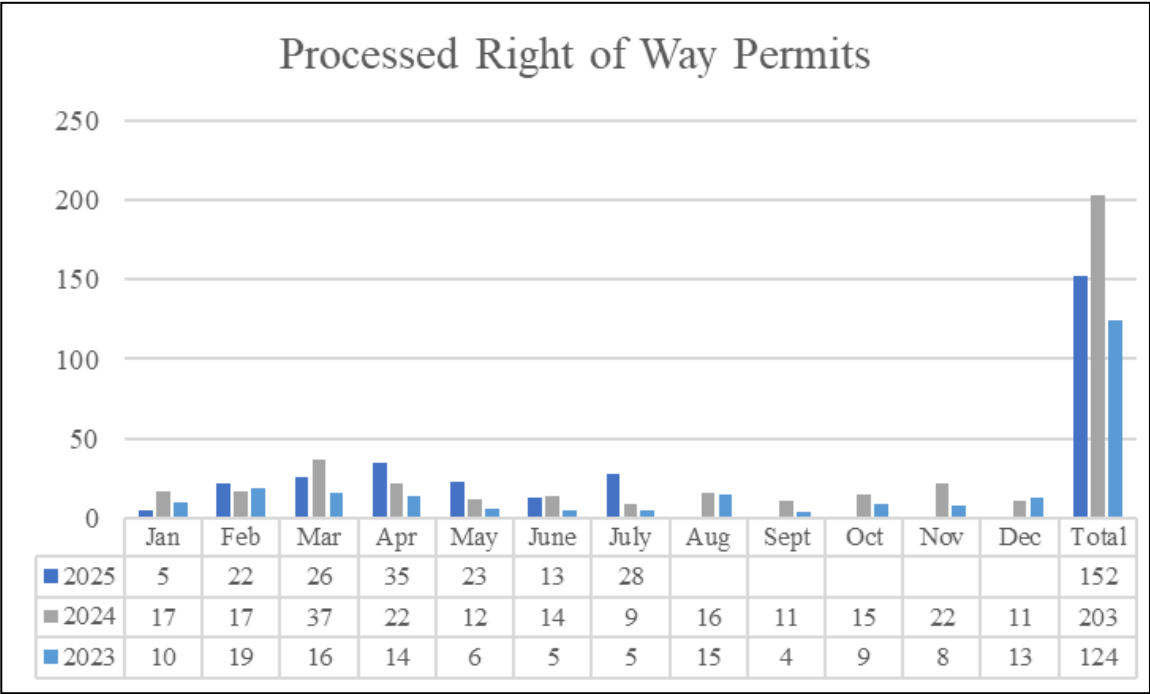
RIGHT OF WAY DIVISION
July 2025

The division actively coordinates with contractors working in the city public infrastructure, to ensure that they stay within the permitted areas, safely pothole crucial city utilities and restore any areas disturbed during construction. With an increasing number of right of way permits, these efforts are vital to maintain the integrity of the city infrastructure and minimize disruptions to residents and businesses. The division ensures compliance with regulations and the successful execution of 19 active permits.

Active Permits

- AT&T 9.0-25 (Central College E of 62)
 - AT&T 134.1-24 (605 and Central College)
 - AT&T 100.0-25 (7915 Smith’s Mill Road)
 - AEP 171.0-24 (New Albany Road E)
 - Baseline permits (All over the city)
 - Breezeline 10.0-25 (7915 Smith’s Mill Road)
 - Columbia Gas 96.0-23 (Upper Clarenton)
- Columbia Gas 120.0-25 (Babbitt Road)
 - Spectrum (Innovation Campus Way W)
 - Spectrum 158.0-24 (DG/Market Street)
 - Spectrum 191.0-24 (Smith’s Mill Road)
 - Verizon 194.0-24 (NA Road E & West Campus)
 - Verizon 04.0-25 (Walton Pkwy)
 - Gas Tap Permits (All over the city)

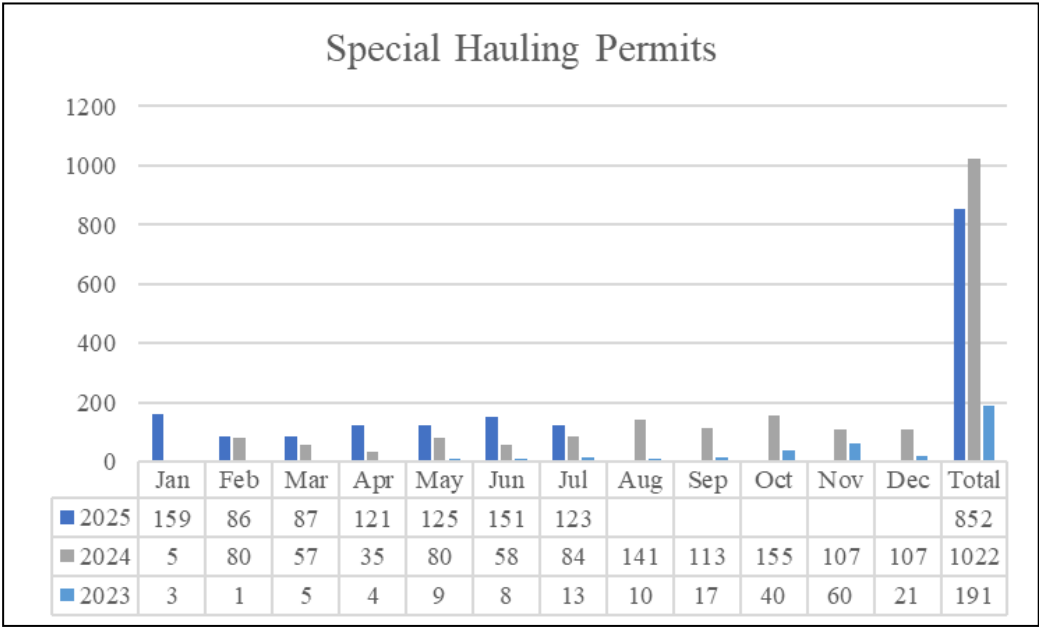
Right of Way Permits



This graph shows the number of permits issued each month by the city for utilities planned to be installed within the public right of way.

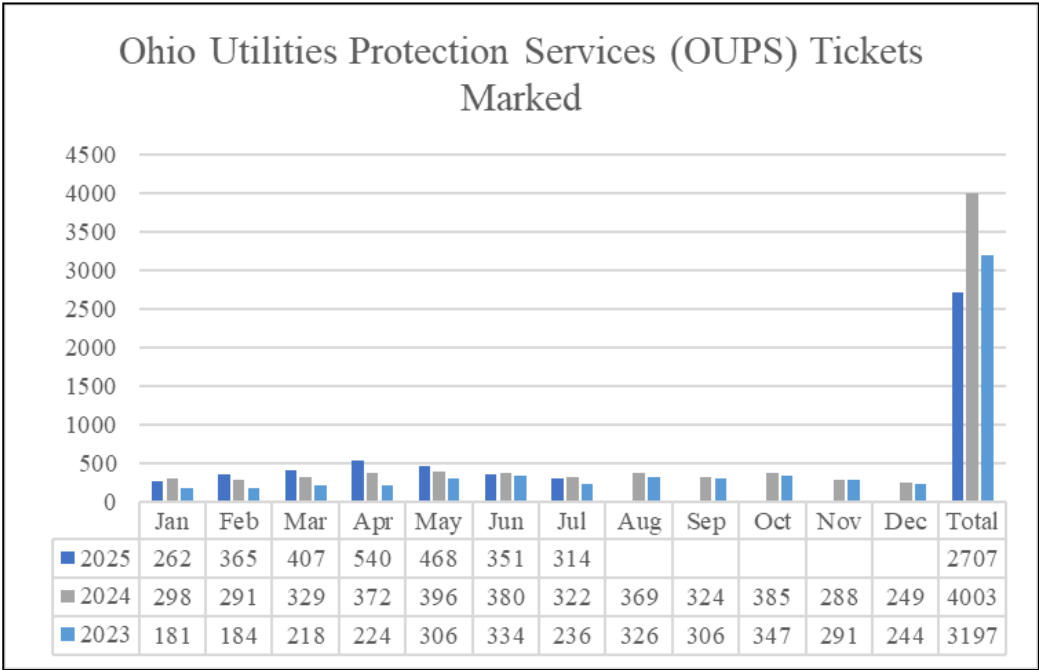
RIGHT OF WAY DIVISION
July 2025

Special Hauling Permits



This graph shows the special hauling permits that are facilitated and issued for the operation of vehicles exceeding the maximum roadway weight, width, height and/or length that are considered ‘oversized’.

Utility Locating (OUPS)



This graph shows the number of Ohio Utility Protection Service (OUPS) markings are ticketed each month. Marking these tickets is a critical public safety measure before excavation work begins to ensure utility lines are properly identified to prevent accidental damage and avoid service disruptions.

FORESTRY DIVISION

July 2025

Overview

The forestry division manages the health and safety of New Albany trees through tasks such as pruning and removal. Work is planned seasonally according to the biological needs of different tree species. The division is also responsible for the safe operation of chainsaws, commercial wood chippers, the city bucket truck and establishing and maintaining traffic control as needed.

Clearance Pruning

The division continued clearance pruning efforts throughout July. Trees were pruned along Milton Court, Phelps Close, Lewis Link, Central College, Harper Lane, Harlan Square and throughout the village center.

Trees are pruned to provide 13 to 15 feet of vertical clearance above the improved road surface and generally 8 to 10 feet above sidewalks. Where possible, the division tries to balance the canopies (raise the low branches on both the street and sidewalk side to the same height). Balancing is more common on the older/more mature trees.

Young trees that are too small to be raised to these heights will have their lower branches reduced (shortened) while middle aged and mature trees will typically have their branches removed.



Left: Dawn redwoods with low branching extending into the roadway and sidewalk of Lewis Link

Right: Lewis Link dawn redwoods after clearance pruning

FORESTRY DIVISION

July 2025

Corrective Pruning/Improving Light Penetration

In addition to clearance pruning, the division began climbing the larger trees to incorporate corrective pruning. Think of this as a 'basic prune' and is the foundation to the pruning cycle the division aims to establish in 2026. The goal is to remove dead branches and prune for clearance over roadways, sidewalks, and other infrastructure. This may be done from the ground, using a bucket truck, or by climbing. Additionally, the division aims to improve light penetration and selectively remove live branches to enhance branch spacing. This is important when branches occupy the same space within the canopy, have weak unions, exhibit tight branching angles, or cross over each other, which can cause damage.

For residents wanting to improve light penetration to their lawn, patios, or other areas, a quick tip is to raise the low branches of nearby trees. This allows more light to enter underneath the canopy. It's uncommon for a tree to be thinned enough to let more light through, and the effects of thinning are usually short-lived, lasting less than a year. Therefore, raising the low branches is the best long-term solution for increasing light to a specific space.



Left: Honeylocust trees along US-62 business frontages prior to pruning
Right: US-62 business frontages after honeylocust were pruned to remove dead branches, improve clearance/light penetration and improve structure

FORESTRY DIVISION

July 2025

Storm Damage

The weather was hot and stormy throughout the month. The division participated in weekly storm damage clean up. Storm clean up can range from picking up a few downed limbs or broken/hanging branches to cleaning up fallen trees. The division cleaned up a tree that 'exploded' after being struck by lightning in Fenway Park.

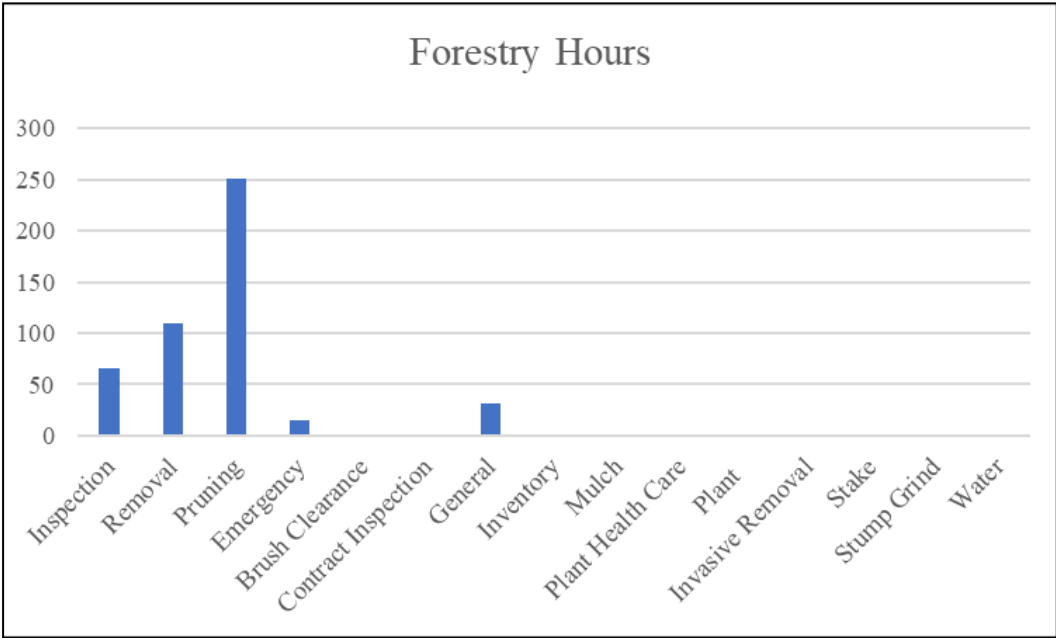
The division discovered two trees that had been struck by lightning. The damage caused by lightning can vary greatly and is influenced by several factors, including the energy (voltage) of the lightning strike, the species of the tree, the moisture content of the tree, and whether the bark is wet or dry, among other factors. As a result, some trees may die within a week, others within a few months, while some may appear to recover as if nothing happened. In certain cases, trees can even "explode." This phenomenon occurs when lightning instantly vaporizes the water inside the tree, leading to a buildup of steam pressure within the trunk.



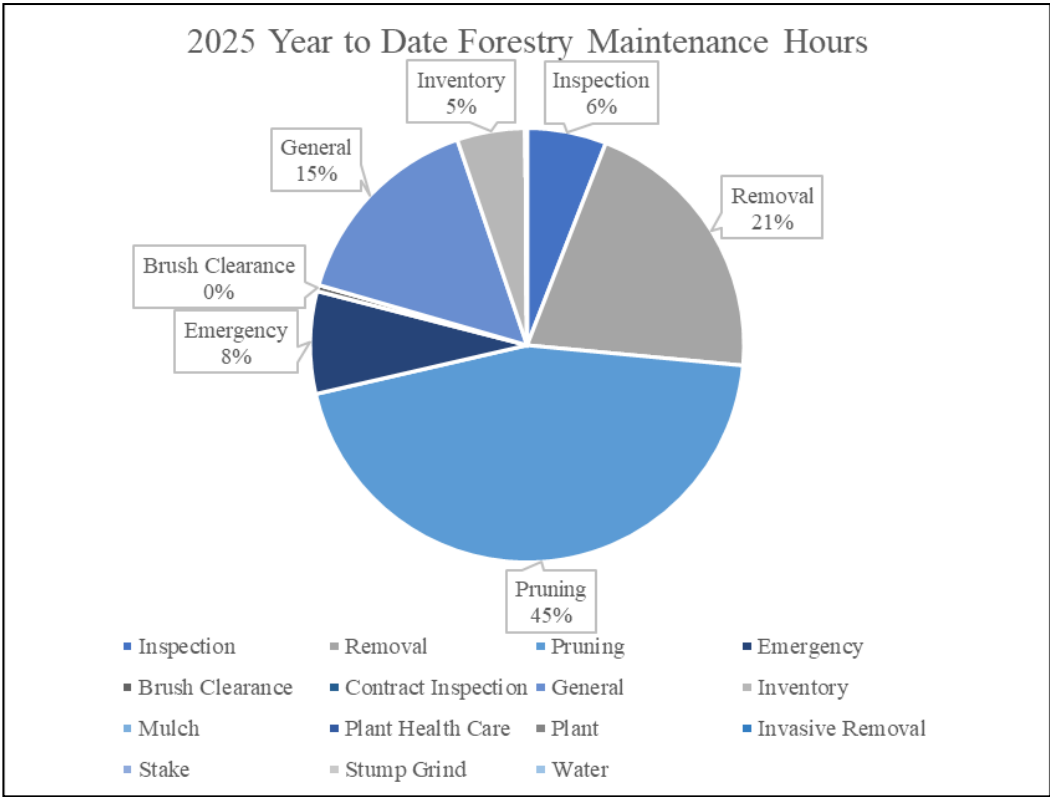
Left: Shattered trunk of a black locust tree that was struck by lightning in Fenway Park
Right: Gabe Hiltz and Otavio Bressen using the winch to extract black locust in Fenway Park

FORESTRY DIVISION
July 2025

Forestry Hours



This graph shows the number of hours the division spent on each respective category. Tracking these hours helps ensure that resources are effectively allocated to key tasks, enabling the division to prioritize essential tree care, removal and maintenance throughout the city.



This graph shows the number of hours year-to-date during each month the division spent on each respective category.

FLEET DIVISION

July 2025

Overview

The city fleet division actively maintains all city-owned vehicles and equipment in a manner consistent with the demonstrated quality and aesthetic of New Albany.

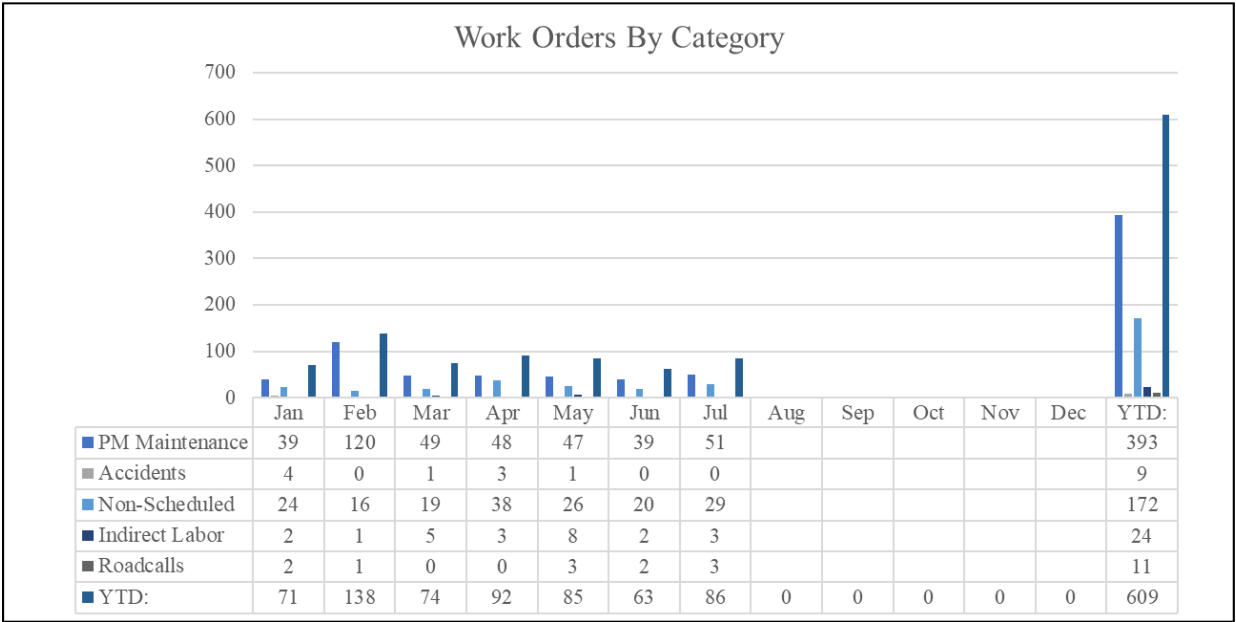
Fleet Maintenance

The division began preparing for the upcoming winter season by initiating snow and ice truck maintenance, sandblasting, deep cleaning and detailing. Over 300 hours were dedicated to winter-readiness tasks alone—all while continuing to support summer operations at full capacity.

This seasonal transition required a careful balance between preparing equipment for winter demands and maintaining reliable service across all departments during peak summer activity.

In addition to the divisions ongoing responsibilities, the city purchased and received a new 30-yard leaf collection machine.

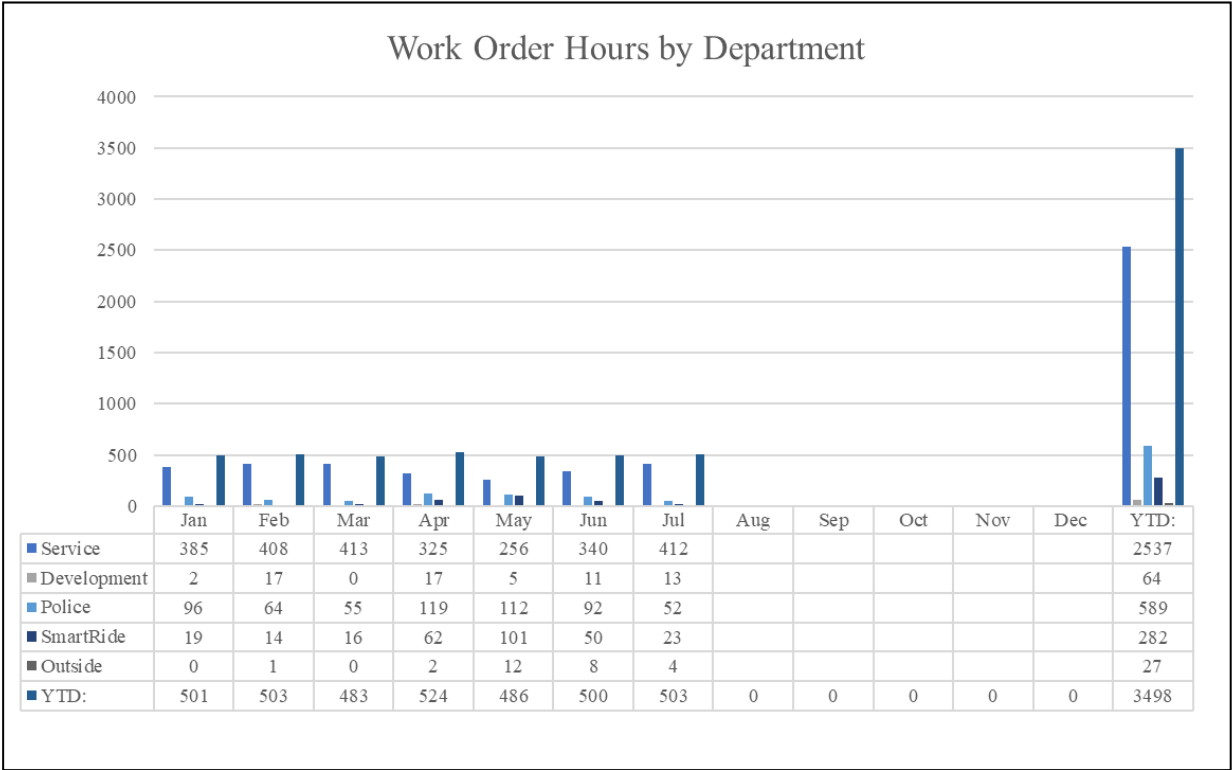
Fleet Work Orders



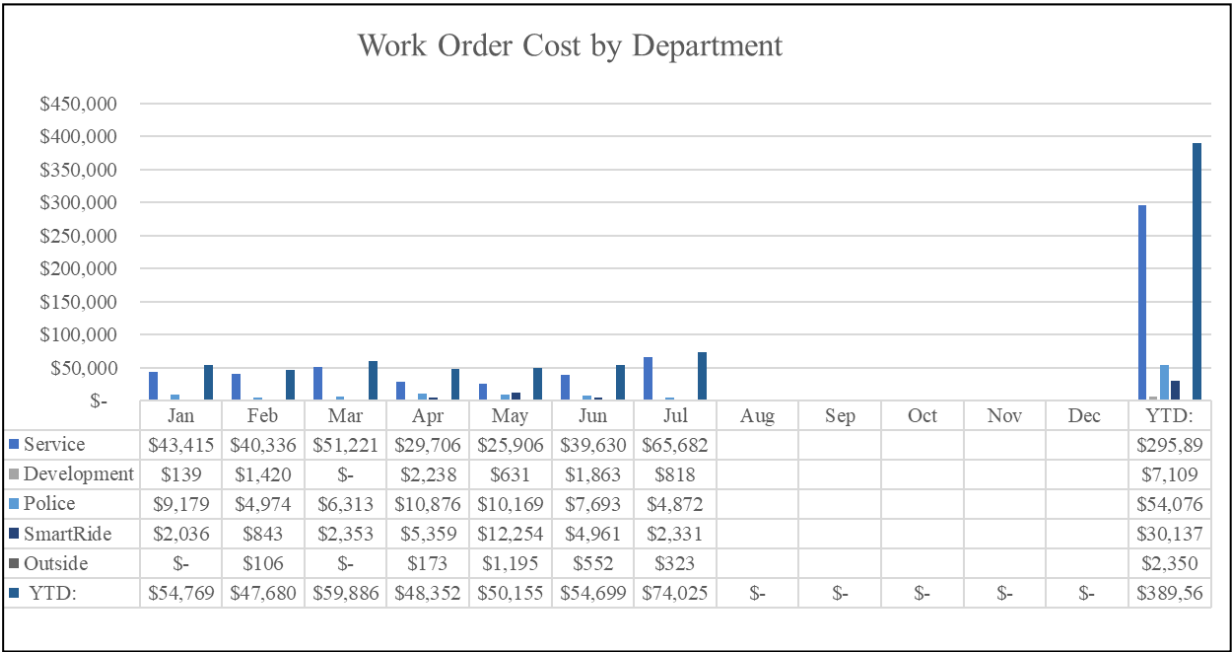
This graph shows the work orders year-to-date broken down by each category.

FLEET DIVISION
July 2025

Fleet Work Orders continued...



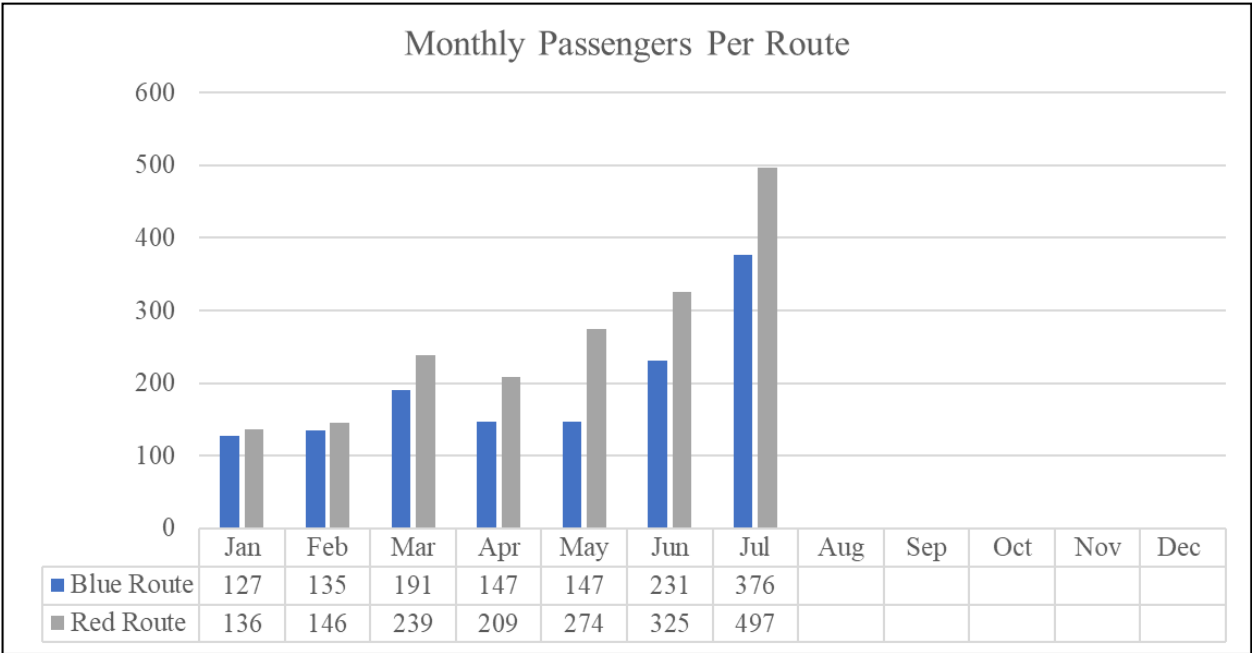
This graph shows year-to-date breakdown of work order hours by department.



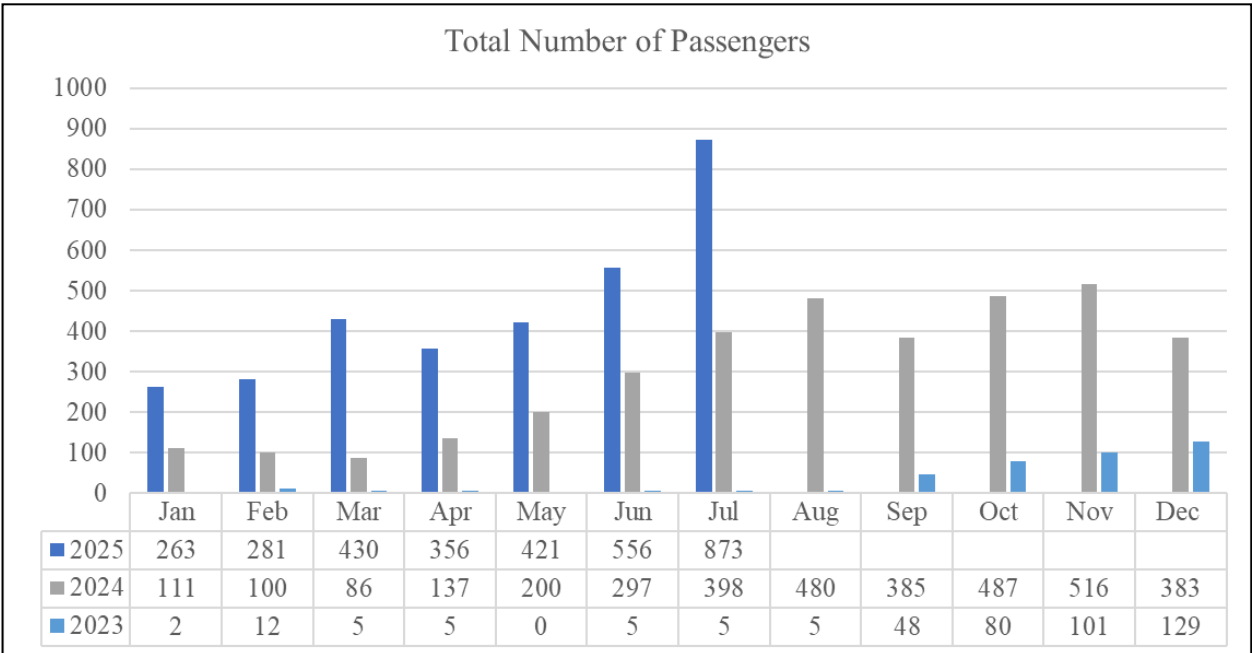
This graph shows the year-to-date breakdown of work order costs by department.

FLEET DIVISION
July 2025

New Albany SmartRide



This graph shows the number of monthly passengers on the blue and red SmartRide routes.



This graph shows the total number of monthly SmartRide passengers.