

# NEW ALBANY

## FINANCE

### MONTHLY REPORT

March 2026

*Leadership*

*Integrity*

*Vision*

*Excellence*

#### Inside This Issue:

General Analysis

Revenue Analysis

Expenditure Analysis

Investments



**NEW**  
**ALBANY**

COMMUNITY CONNECTS US

## *Introduction*

The purpose of this report is to summarize the financial position of the City of New Albany (City) on a monthly basis using year-to-date (YTD) and prior year information for comparison purposes. The document is comprised of two major sections:

1. General Fund analysis
2. All Funds analysis

Each section contains graphs with supporting analysis. In the appendices are supporting financial documentation relating to the analysis. Within each section, financial information is displayed at the following levels:

1. Fund
2. Revenue
3. Expense

The General Fund section contains additional data used to measure and assess the City's financial condition. The goal is to emphasize the General Fund as the best overall indicator of the financial health of the City and to utilize All Funds for a more holistic view. A summary of Investments is also included.

Upon review of the information provided, the finance department is available to answer questions or provide additional data. Please do not hesitate to submit your request via email to [bstaats@newalbanyohio.org](mailto:bstaats@newalbanyohio.org) or phone at (614) 855-3913.

Respectfully *Submitted*,



Bethany Staats, CPA, Finance Director

# ***General Fund Section — SUMMARY OF FINANCIAL RESULTS***

## **CASH BALANCE**

1. Chart 1 illustrates a positive YTD variance of (\$4,420,308) between revenue (\$18,230,623) and expenses (\$13,810,315) of the General Fund (101), the primary operating fund.

## **REVENUE**

1. Chart 2 shows a YTD increase in revenue of \$4,061,502 or 26.69%. Income tax collections are \$15,614,765 year-to-date, which is a 51.55% increase from 2025. Chart 3 provides a monthly illustration of these collections.
2. Chart 4 breaks down income tax collections by type. Typically, withholdings are the best indicator of income tax stability. YTD withholdings in the General Fund are higher than 2025 and all previous years dating back to 2022, as shown. The growth since 2022 (and prior years) can be attributed to general business expansion and increasing development in the City, which includes an increase in construction company employee withholding. In 2021, total income tax revenue increased drastically from historical collections which was a combination of continued growth in withholding and significant increases related to net profits and individual tax estimates, despite continued economic uncertainty coming out of the 2020-2021 global pandemic (COVID). Withholding for New Albany remained stable through 2022 as a result of increased construction withholding related to economic development projects cushioning the overall decrease in withholding for some companies within the New Albany Business Park. The decrease in withholding for these companies resulted from several companies shifting to hybrid and work-from-home models for employment. In addition, a large employer left the business park in 2022. The former growth seen in withholding in 2021 resumed for 2023, and continued in 2024 and 2025. In total, actual 2024 income tax collections surpassed 2023 collections by an astonishing \$9.4 million or 28.6% and 2025 income tax collections surpassed 2024 collections by an unprecedented \$12.5 million or 29.54%. With a new year starting and the first three months of collections far exceeding previous YTD collections back to 2022 (and prior), although early, 2026 appears to follow the continued growth path of previous years. Continual monitoring, regular analysis on current and future projections and timely adjustments to income tax revenues estimates are increasingly more important as the city realizes the effect of the growth of the business park and substantial withholding from construction companies contributing to an overall growth in income tax revenue.
3. Chart 5 provides additional insight into income tax collections by type. The pie chart entitled 'Normal' shows the historical average breakdown of income tax collections for the prior three years.

## **EXPENSE**

1. YTD expenses excluding transfers and advances are 34.56% higher than last year. Overall, operating expenses have continued to increase each year as a result of continued growth and development of the city. The primary reason for the continued increase in operations is related to Intel choosing New Albany for its new microchip manufacturing plant in early 2022 along with various other impactful projects choosing New Albany. In addition, the management of several million dollars in related infrastructure improvements necessary to support the growth and project development have contributed to the increase in expense. A total of 19 new positions were filled from June of 2022 through the end of 2023 and 20 new positions were filled in 2024, which is consistent with the overall increase in expense operations and further, personnel costs during that time as staffing was adjusted to meet the needs of increased development and city programming. In 2025, only 12 new positions were created and filled as staffing levels were gradually reaching levels needed for the increase in demand on city services from the previous 2-3 years. The 2026 adopted budget anticipates a net increase of eight more positions to continue adjusting staffing levels with current operations. The operating & contract services category includes expenses for professional services related to economic development, planning, inspection fees, legal fees, and other costs that may have a one-time expense or project-driven costs. The YTD increase in expenses noted are primarily the result of timing of encumbering annual expenses at the beginning of each year. The increase in these expenses for 2026 is not anticipated to remain as high, however, expenditures will be monitored and budgets adjusted as necessary throughout the year. In recent years, the General fund has not been used for direct capital outlay expenses and no such expenses are planned for the General Fund in 2026. The General Fund provides for capital expense by transferring funds to the appropriate capital projects funds.
2. The adopted appropriations as amended are reflected in the 2026 budget amounts. The General Fund has utilized 18.11% of the appropriations to date for 2026.

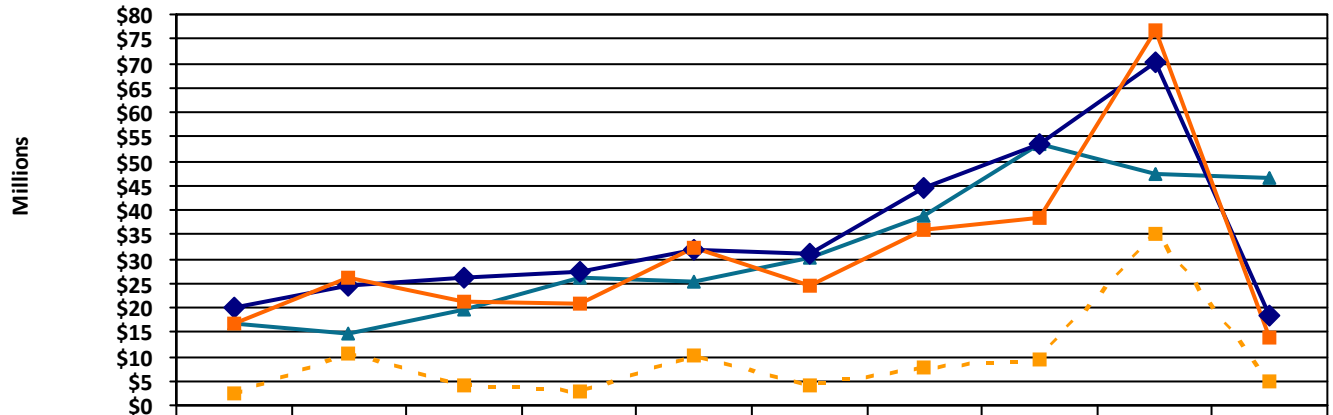
## *All Funds Section — SUMMARY OF FINANCIAL RESULTS*

### **ALL FUNDS**

1. When examining income tax withholding collections, inclusion of the Business Park results in a 24.06% increase compared to an increase of 24.38% in the General Fund. As abatements and revenue sharing agreements expire, revenue sharing with the schools also ceases. As a result, Business Park revenue will partially shift to the General Fund and certain designated capital funds. This, combined with increased construction withholding, has led to the General Fund outpacing the All Funds growth in recent years. In 2022, a few large employers in the Business Park made adjustments to employee schedules and employment practices (hybrid and/or work from home models) leading to a reduction in withholding from the previous year. This proved especially true within the Central College EOZ where, in addition to a change in employee work locations, a large employer discontinued operations and moved from the Business Park. 2023 collections in this EOZ remained consistent with the decrease in 2022. In 2024, this EOZ showed an increased level of revenues as buildings were utilized more, generating increased withholding in 2024, however, 2025 collections showed a decrease in this EOZ (see Chart 8). The decrease relates to the timing of certain abatements and revenue sharing requirements within the specific EOZ. The impact of significant growth in construction withholding and new businesses coming online is believed to balance any continued negative effect on withholding as businesses continue to adjust their operations as it relates to remote work or other economic factors. Final total collections in 2025 resulted in a \$19.22 million or 27.5% increase over the same for 2024.
2. Chart 8 shows the EOZ areas and provides insight into the breakdown of tax collections within the Business Park from which the City distributes between the General, Capital Improvement, Park Improvement, and Village Center Capital funds.

# General Fund Section — CASH BALANCE

**CHART 1: General Fund (101)—Revenue, Expenses, and Carryover**  
*(Additional Data can be found in Appendix A: General Fund Monthly Cash Flow)*



	FY 2017	FY 2018	FY 2019	FY 2020	FY 2021	FY 2022	FY 2023	FY 2024	FY 2025	YTD 2026
Carryover	16,585,078	14,685,187	19,777,650	26,131,809	25,413,645	30,183,621	38,726,121	53,425,088	47,265,142	46,428,768
Revenue	20,180,704	24,656,869	26,178,912	27,217,543	32,024,165	30,839,620	44,558,795	53,340,483	70,350,655	18,230,623
Expenses	16,883,593	26,224,577	21,054,634	21,002,212	32,314,974	24,678,321	35,822,684	38,184,878	76,599,889	13,810,315
Transfers	2,524,125	10,488,977	4,234,723	2,868,185	10,071,677	4,054,642	7,602,136	9,406,783	35,291,528	4,856,082

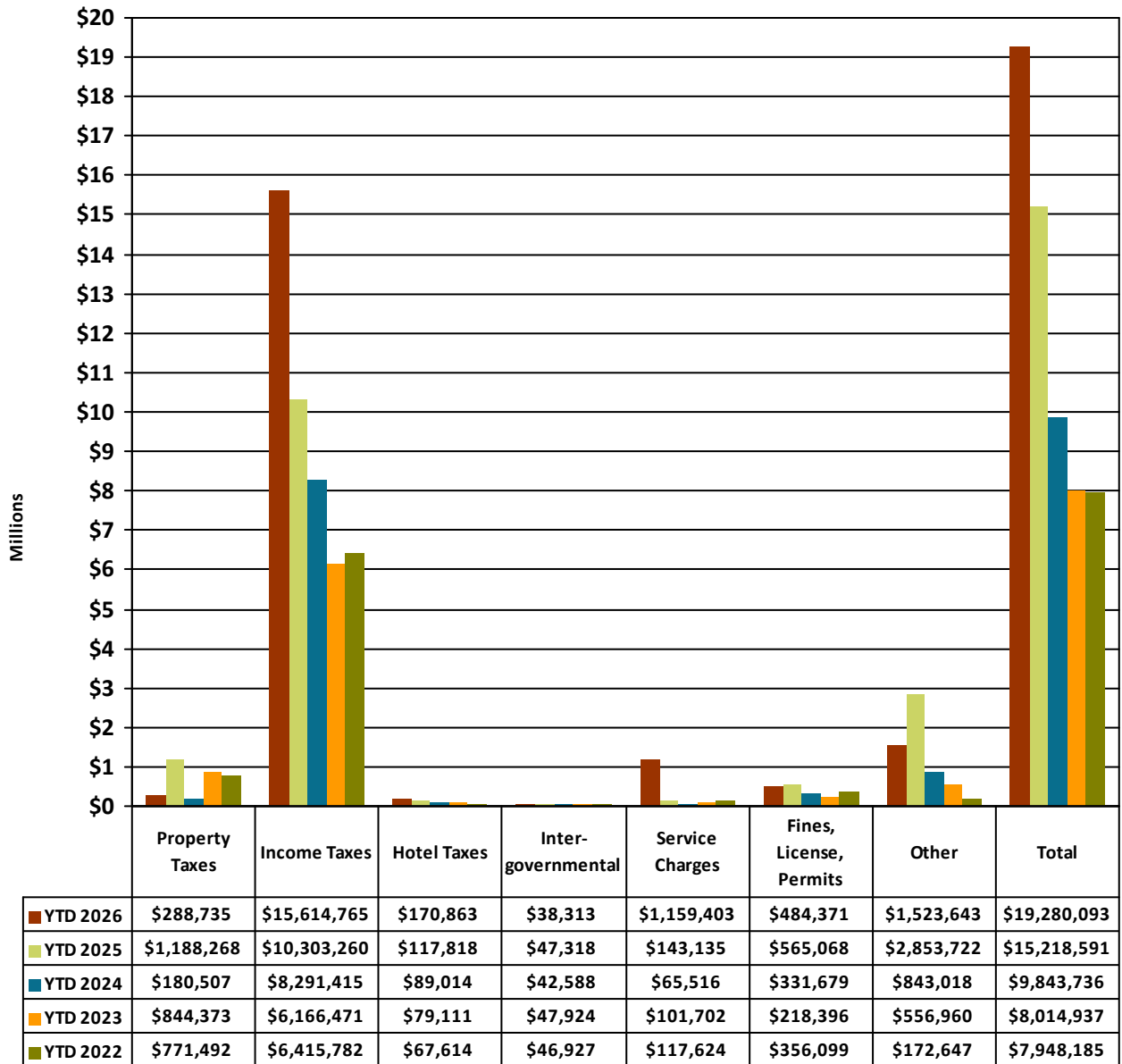
General Fund Transfers	FY 2017	FY 2018	FY 2019	FY 2020	FY 2021	FY 2022	FY 2023	FY 2024	FY 2025	YTD 2026
Debt Service	869,125	645,272	644,372	646,003	674,091	2,051,926	433,967	434,967	432,518	-
Severance Liability	100,000	460,000	100,000	-	100,000	-	300,000	200,000	750,000	-
Capital Improvements	-	2,000,000	2,500,000	-	8,000,000	-	2,500,000	-	27,600,000	-
Village Center Improvements	-	-	-	-	-	-	-	5,000,000	-	-
Park Improvements	-	1,300,000	-	-	-	500,000	1,000,000	-	-	-
Infrastructure Replacement	650,000	1,800,000	-	-	-	-	-	500,000	500,000	-
Capital Equipment Replacement	905,000	1,743,705	990,351	1,457,582	1,282,986	1,383,716	3,348,271	3,201,316	3,482,025	-
Water & Sanitary Sewer Improvements	-	2,540,000	-	750,000	-	-	-	-	-	-
Hinson Amphitheater	-	-	-	-	-	100,000	-	50,000	50,000	-
K9 Patrol	-	-	-	14,600	14,600	19,000	20,500	20,500	20,500	-
Information Technology (Intrafund)	-	-	-	-	-	-	-	-	1,298,107	3,661,576
Community Events & Grants (Intrafund)	-	-	-	-	-	-	-	-	674,330	775,000
Senior Connections (Intrafund)	-	-	-	-	-	-	-	-	273,178	211,116
IDEA Implementation Board (Intrafund)	-	-	-	-	-	-	-	-	77,500	97,500
Sustainability Advisory Board (Intrafund)	-	-	-	-	-	-	-	-	133,370	110,890
<b>Total Transfers</b>	<b>2,524,125</b>	<b>10,488,977</b>	<b>4,234,723</b>	<b>2,868,185</b>	<b>10,071,677</b>	<b>4,054,642</b>	<b>7,602,136</b>	<b>9,406,783</b>	<b>35,291,528</b>	<b>4,856,082</b>

Historically, the City has primarily maintained a positive variance between revenue and expenses, which has allowed it to maintain a target carryover balance of at least 60% of annual revenue as established, based upon a sensitivity analysis previously conducted. For budgetary purposes, the City also maintains a target reserve of 65% of the adopted operating budget in the General Fund, which is predominately funded by income tax revenue. In years 2018, 2021 and again in 2025, significant transfers and advances to various funds as excess reserves were used to fund various projects as needed, therefore, expenses did exceed revenues. However, the carryover balance remained consistent and even exceeded previous years with the exception of 2018 and 2025. The City Council has been able to redirect additional surplus dollars to the Infrastructure Replacement, Severance Liability, and Capital Equipment Replacement funds to address the long-term needs of the city, as well as other Capital funds to subsidize current capital projects. Additionally, the City utilizes the excess balance to advance funds to certain funds as necessary to be repaid once said fund collects from its anticipated revenue source and funds are available. In 2025, the General Fund transferred a historical amount to the Capital Improvements Fund for the purchase of property intended to partially lease to the school district for the future site of their athletic campus, in addition to funding other significant projects. In 2026, similar significant transfers for Capital and Park Improvements are budgeted in addition to regular transfers to Debt Service, Severance Liability, Infrastructure Replacement, and the Capital Equipment Replacement funds. In addition, various intrafund transfers to general operating “sub-funds” are included in the budget. While 2025 finished the year with an ending carryover balance that was \$6.2 million less than that of 2024, the final balance far exceeded the target reserve. The adopted 2026 Annual Budget Program anticipates the carryover balance to be restored to previous levels by year end.

# General Fund Section — REVENUE

**CHART 2: General Fund—Revenue Sources**

(Additional Data can be found in Appendix A: General Fund YTD Revenue Analysis)

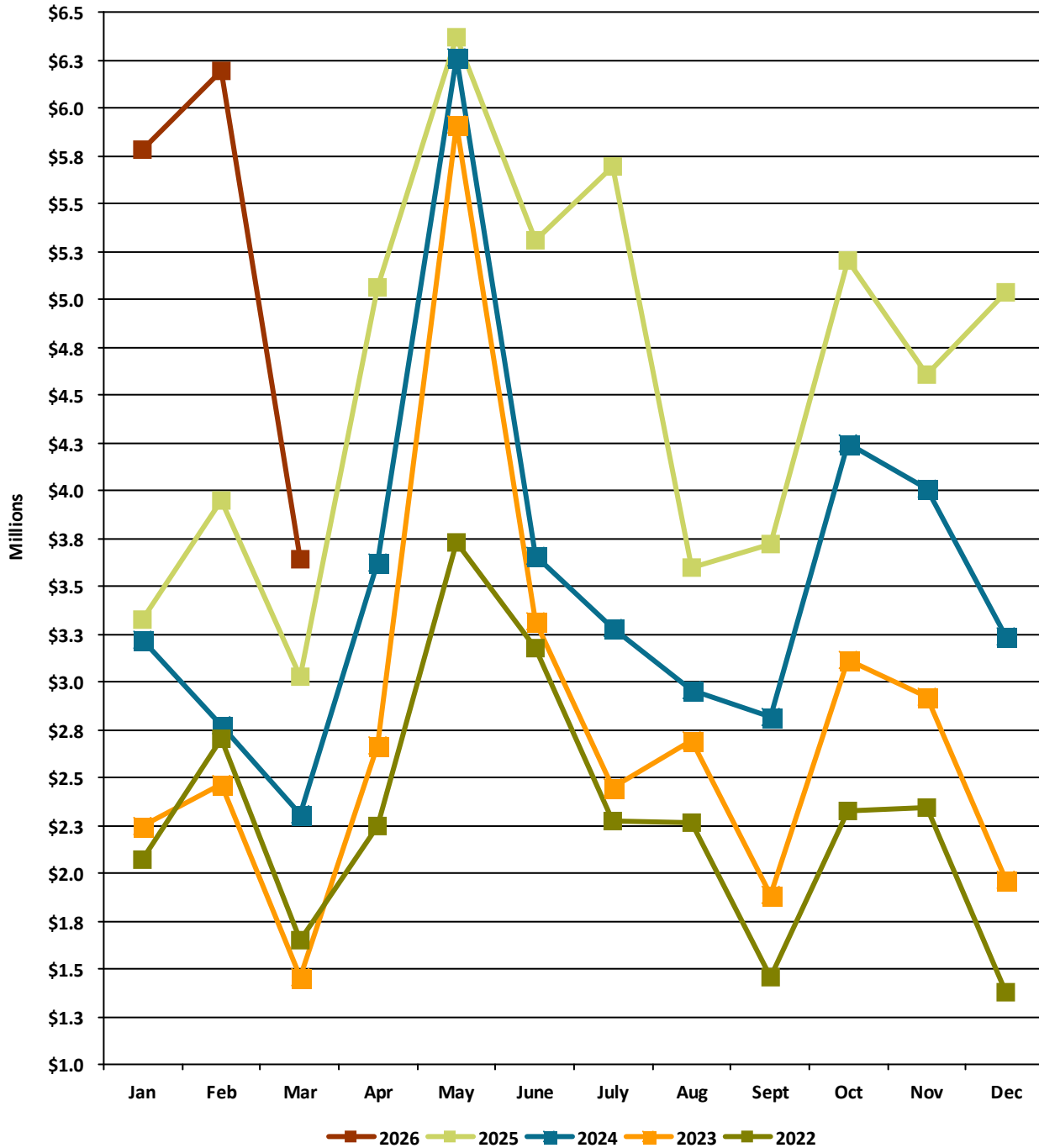


## 2026 Analysis

In total, revenues have increased by 26.69% from 2025 in the General Fund. Income taxes, which comprise 80.99% of total revenue for 2026, have increased by 51.55%. Hotel Taxes and Service Charges have increased by 45.02% and 710.01%, respectively. The increase in Service Charges is a result of the City moving to a self insurance model for health benefits for employees and includes revenue for the employer and employee health benefit premium. When revenues were initially projected for 2023 and beyond, the City had anticipated that income tax could be negatively impacted as a result of the economic climate at the time. Fortunately, a significant negative impact has not been realized, and instead, the City has realized substantial growth in income tax revenue since 2022. The growth in revenue is a result of increased economic development and related construction, along with the expiration of tax abatements which discontinues the City’s obligation to share income tax revenue once schools begin receiving property tax revenue from the project. Income taxes from Individuals and Net Profits have mainly seen significant increases for the last several years. The City views these increases with caution due to the potential for large refunds once returns are filed by individuals or the ability for companies to carry forward losses to future years, resulting in decreased revenue in those years. To mitigate the risk and prepare for such circumstances, the City has sufficient reserves to cushion a resulting downturn in revenue, should it be realized in the near future. The reserve allows time for appropriate adjustments to appropriations and related spending to be aligned with the City’s available resources.

# General Fund Section — REVENUE

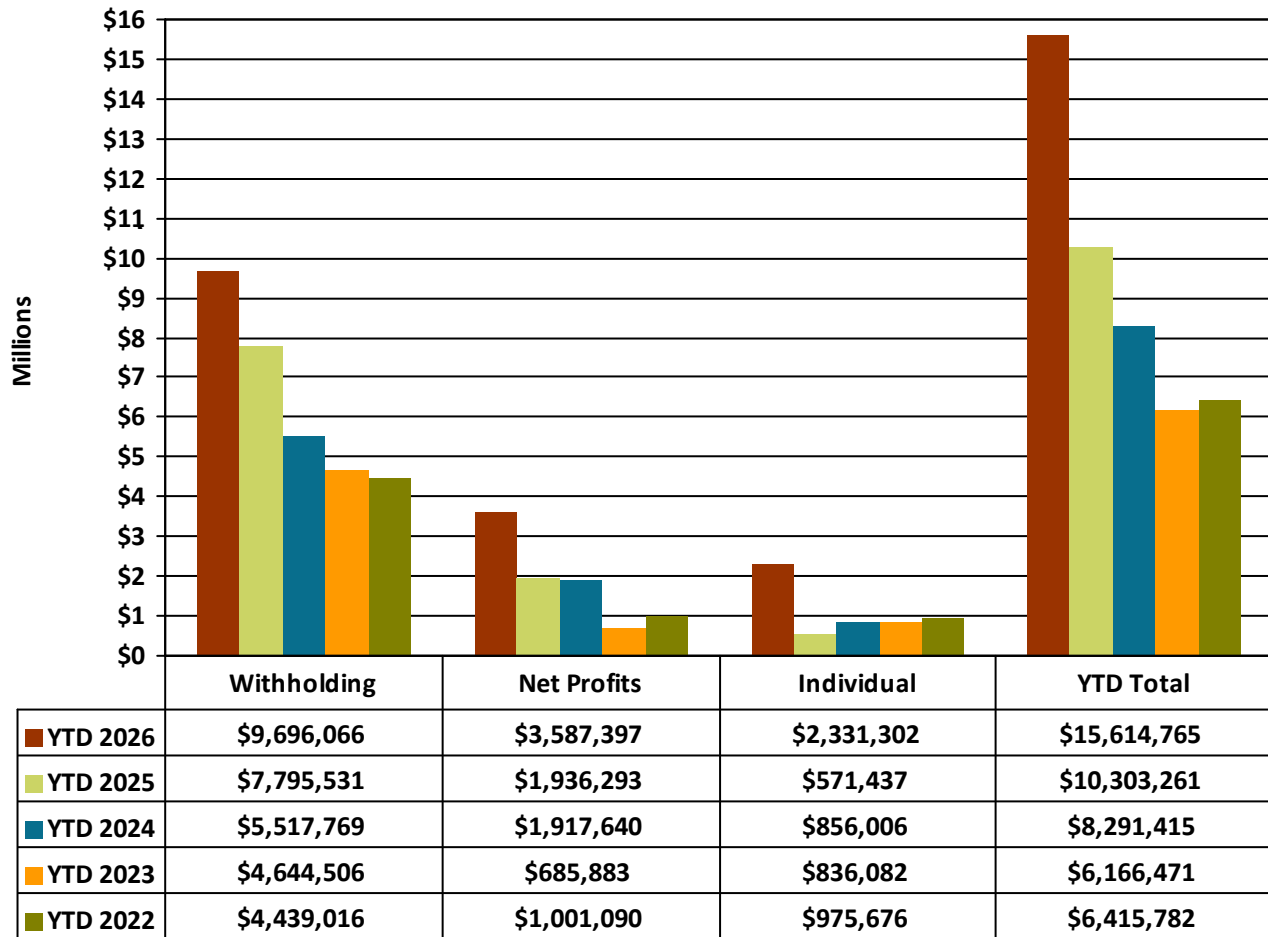
**CHART 3: General Fund Income Tax Revenue (All Types) - Monthly**  
*Additional Data can be found in Appendix A: General Fund Income Tax Trend Analysis*



Each line represents a year of Income Tax collections. The points along each line represent the individual months of collections. The maroon line represents 2026. When examining total collections for 2025, the collections recorded for January 2025 and May 2025 show a small increase from the same months in 2024, yet a considerable increase over the same months in the three years prior. Collections in all other months of 2025 show a significant increase over the same months of the four years prior. Total 2025 collections exceeded 2024 collections by more than \$12.7 million. Looking ahead to 2026, January and February collections are record-setting and point to a significant increase. Yet, it is still too early to assume that year-to-date collections are indicative of overall 2026 collections. These collections will continue to be monitored, especially after the income tax filing season, and projections will be updated as appropriate.

## General Fund Section — REVENUE

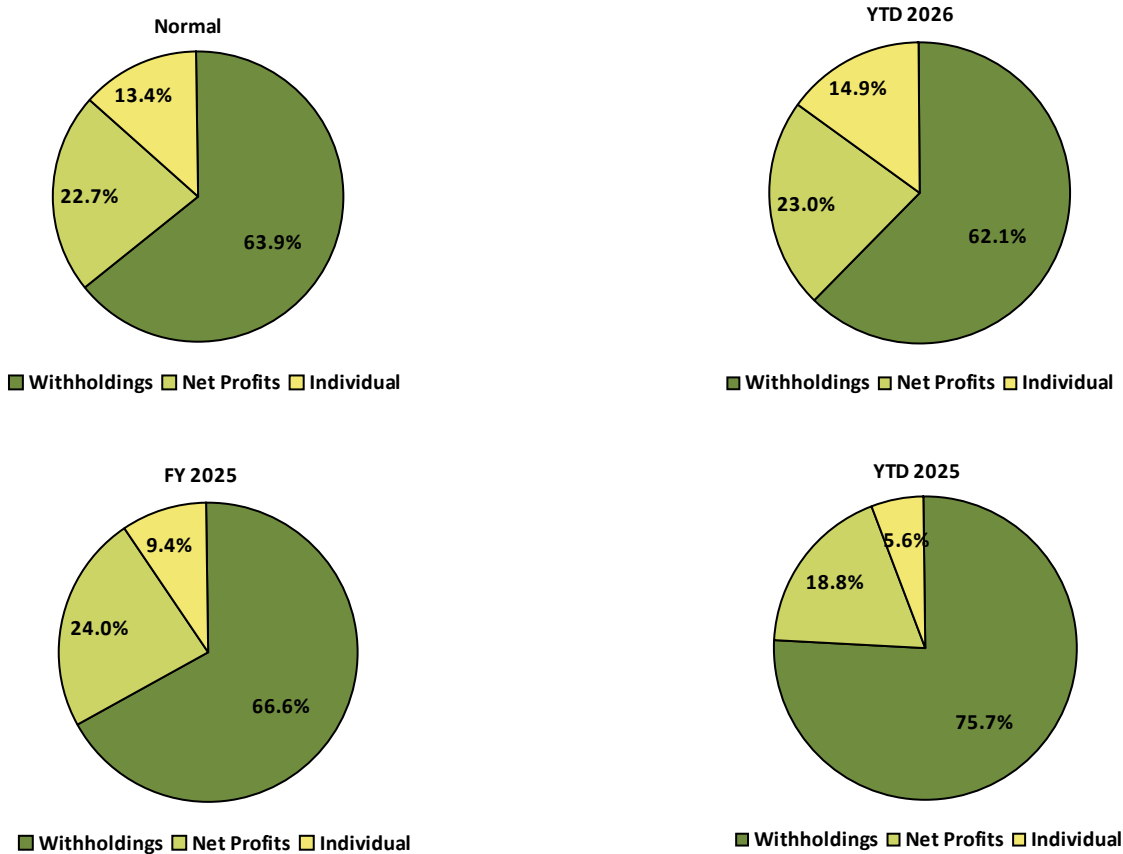
**CHART 4: General Fund Total Income Tax Collections by Type**  
*Additional Data can be found in Appendix A: General Fund YTD Revenue Analysis*



This graph shows the YTD income tax in the General Fund for the last five years. Withholdings are the most important income tax performance indicator. Increased payroll deductions are indications of job, wage, and economic growth. The area of caution relating to income tax performance is Net Profits, which are volatile and similar in nature to company stock performance. Also, changes in legislation regarding Net Profit taxes (option to file with the State and Net Loss carry-forward provisions) could present some uncertainty relative to the stability of this source of income tax. YTD receipts in withholding and net profits income tax revenue are higher than the previous years, with net profits seeing the most significant increase. YTD individual income tax revenue is more than that of all previous years. The YTD individual income tax revenue for 2026 results in an increase of approximately 307.97% from 2025. Although the increase is significant by percentage, the increase amounts to approximately \$1.76 million, which is made up with the overall increase in all types of income tax collections of \$5.3 million. With an overall YTD increase in total collections of 51.55% from 2025, collections continue to show growth. The overall collections YTD for 2026 represent an astonishing 143.38% increase from 2022 collections.

# General Fund Section — REVENUE

**CHART 5: General Fund Total Income Tax Distribution**  
*Additional Data can be found in Appendix A: General Fund YTD Revenue Analysis*

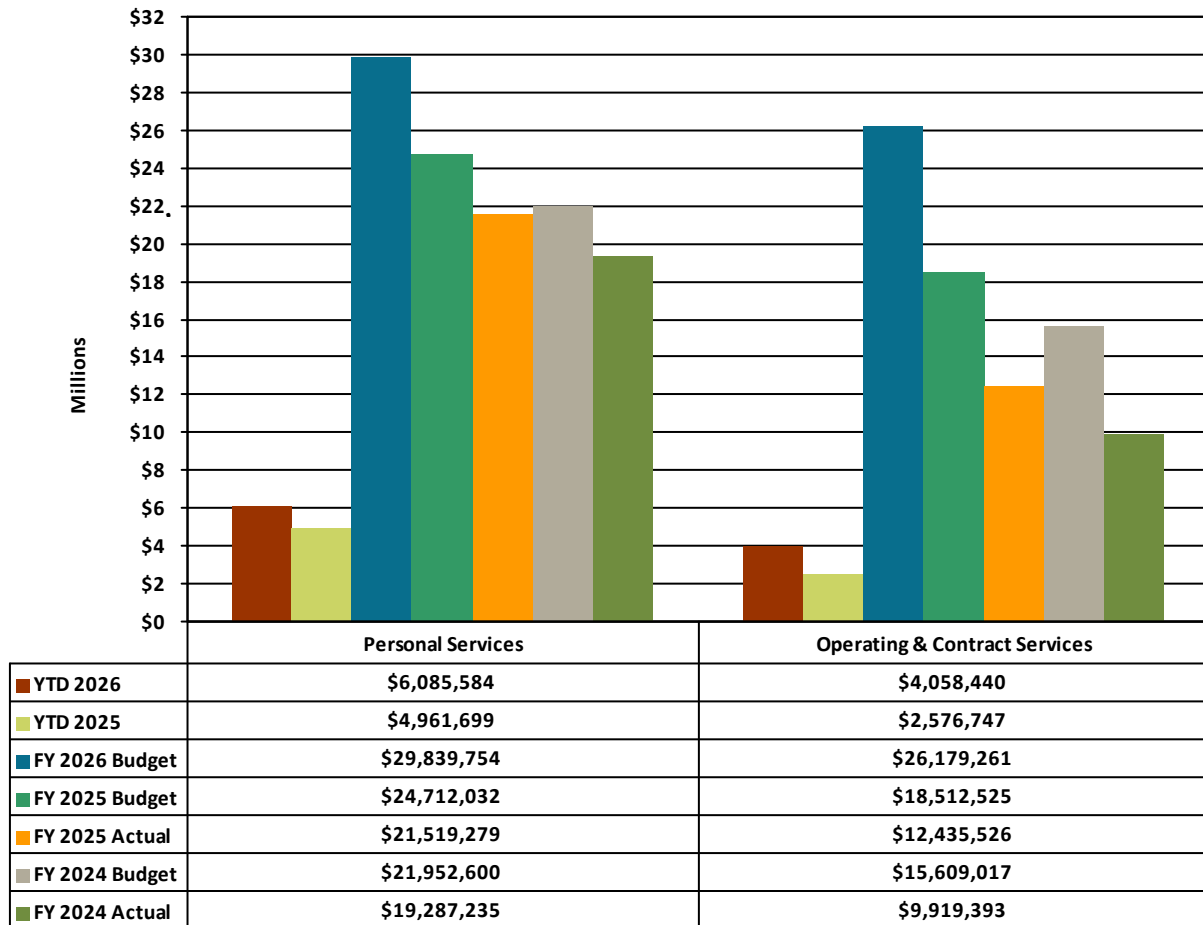


The pie chart titled ‘Normal’ shows the historical average breakdown of Income Tax collections for years 2023—2025. The additional charts can be used to compare the YTD 2026, YTD 2025 and FY 2025 totals to the normal percentages. The timing of receipts can skew the data, especially in the early part of the year as tax filings are submitted. Over the last several years prior to 2024, Net Profits and Individual collections grew to represent larger portions of income tax collections. Due to the nature of those collections fluctuating and being significantly vulnerable to the overall economy, the portion of income tax they represent could also fluctuate accordingly.

# General Fund Section — EXPENSE

**CHART 6: General Fund Expenditures by Category**

*Additional Data can be found in Appendix A: General Fund YTD Expenditure Analysis*



This graph shows the YTD operating expenditures in the General Fund, comparing amounts with YTD for 2025, the 2024 and 2025 budgeted amounts, and the actual expenditures for both 2024 and 2025. Personal services are the greatest expense among these categories. Expenditures for personal services have continuously grown over the last three years. This is primarily due to three factors: 1) the addition of new positions to serve the community and accommodate New Albany’s ongoing growth; 2) movement along steps of pay grades; and, 3) general cost of living increases. Expenditures for Operating & Contract Services were expected to increase significantly beginning in 2022 and continued in 2023 to accommodate new economic development projects. The 2024 Actual and 2025 Actual represent a continuation of that trend. Capital outlay expenditures are no longer included in the General Fund. The General Fund supports capital expenses by transferring funds to the appropriate capital projects funds. The primary capital items that were previously included in the General Fund were continued fiber connections, miscellaneous furnishings, and information technology related equipment - each of which presently utilize a different funding source.

## *All Funds Section — SUMMARY OF FINANCIAL RESULTS*

### **Long Term Analysis**

All funds other than the General Fund fall into four major fund types:

1. Special Revenue — a fund with a specific revenue source like a grant or TIF project with restricted expenditure requirements
2. Debt Service — the fund used for principal and interest payments for city borrowings
3. Capital Project — a fund used to pay for capital projects or infrastructure
4. Agency — a fund used for collection and distribution purposes (In/Out)

The **YTD Fund Balance Detail**, found in Appendix B, provides information on the financial position of these funds.

The Economic Opportunity Zones (EOZ) funds are useful in obtaining a holistic view of income tax collections. The city has revenue sharing agreements with the New Albany Community Authority, City of Columbus, New Albany-Plain Local School District, Johnstown-Monroe Local School District, and Licking Heights Local School District. Income tax collections within the EOZ are identified and shared based on the revenue sharing agreements for that area. Income taxes realized outside of the EOZs are distributed as follows:

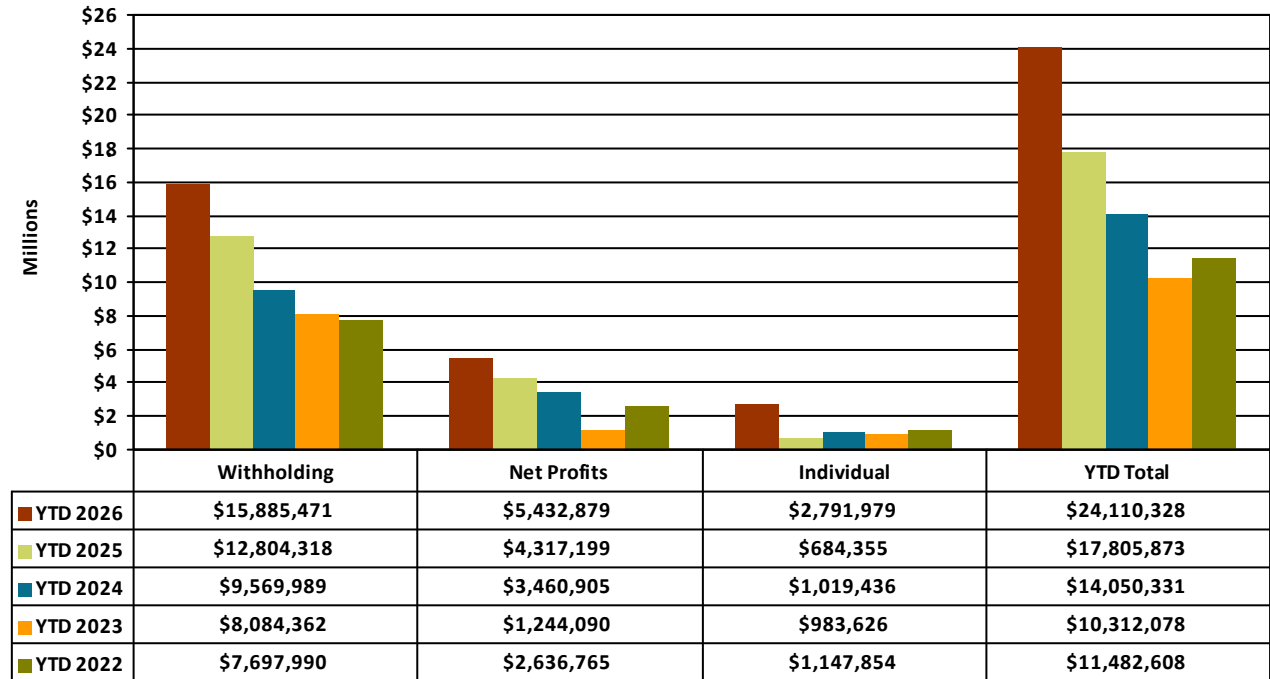
101—General Fund	83.5%
401—Capital Improvements	12%
403—Village Center Capital Improvements	1.5%
404—Park Improvements	3%

Income tax revenues from the EOZs are distributed as follows depending upon slight variations in the revenue sharing agreements:

New Albany	20-35%
School District (s)	35%
New Albany Community Authority	0-50%
Infrastructure Fund	0-30%
City of Columbus	0-26%

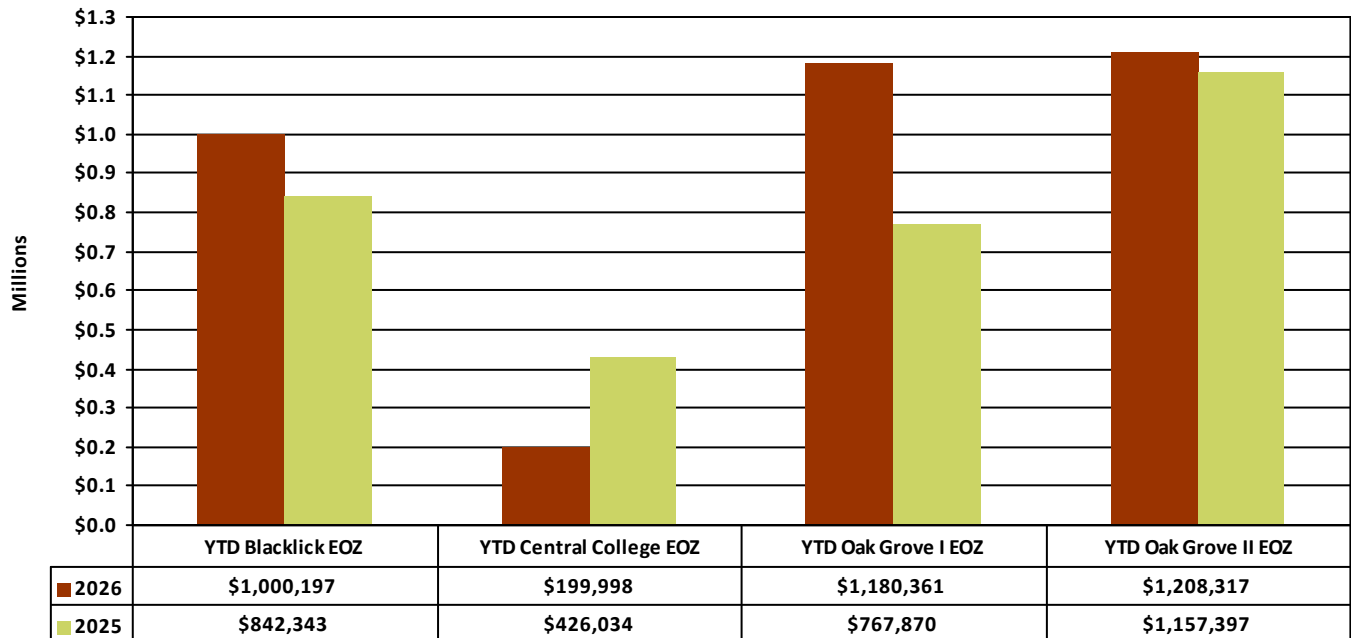
## All Funds Section — REVENUE

**CHART 7: All Funds Total Income Tax Collections by Type**  
*Additional Data can be found in Appendix B: All Funds YTD Revenue Analysis*



When examining income tax from an All Funds level, the results are consistent with the General Fund yet representative of the Business Park environment.

**CHART 8: EOZ Revenue Sharing YTD 2026 –vs– YTD 2025**  
*Additional Data can be found in Appendix B: New Albany EOZ Revenue Sharing*



The EOZ areas provide insight into the breakdown of income tax collections within the Business Park.



**NEW**  
**ALBANY**

COMMUNITY CONNECTS US



**Appendix A:**  
**General Fund**



**City Council of New Albany, Ohio**  
**March YTD Financial Summary (Budget Year = 25.00% Complete)**

General Fund	2026				2025				YTD Variance
	Adopted Budget	Amended Budget	YTD	% of Budget	Final Budget	12/31 Actual	YTD	% of Actual	
<b>Revenue</b>	<b>68,330,256</b>	<b>68,330,256</b>	<b>19,280,093</b>	<b>28.22%</b>	<b>61,367,119</b>	<b>71,770,284</b>	<b>15,218,591</b>	<b>21.20%</b>	<b>4,061,502</b>
Income Taxes	52,064,357	52,064,357	15,614,765	29.99%	49,737,969	54,893,590	10,303,260	18.77%	5,311,505
Property Taxes/Other Taxes	3,480,000	3,480,000	459,598	13.21%	2,665,000	2,862,543	1,306,087	45.63%	(846,489)
Licenses, Fines, and Permits	1,910,000	1,910,000	484,371	25.36%	1,230,000	2,447,459	565,068	23.09%	(80,698)
Intergovernmental	414,200	414,200	38,313	9.25%	418,200	424,920	47,318	11.14%	(9,005)
Charges for Services	4,811,699	4,811,699	1,159,403	24.10%	480,500	556,937	143,135	25.70%	1,016,268
Other Sources	5,650,000	5,650,000	1,523,643	26.97%	6,835,450	10,584,834	2,853,722	26.96%	(1,330,079)
<b>Expenses</b>	<b>52,056,559</b>	<b>56,019,015</b>	<b>10,144,025</b>	<b>18.11%</b>	<b>43,224,557</b>	<b>33,954,805</b>	<b>7,538,447</b>	<b>22.20%</b>	<b>2,605,578</b>
Total Police (1000)	11,859,059	12,069,510	2,533,713	20.99%	9,969,525	8,732,305	1,995,709	22.85%	538,004
Total Community and Econ. Dev. (4000)	7,343,711	8,828,885	1,558,617	17.65%	8,150,629	5,904,201	1,331,759	22.56%	226,858
Total Public Service (5000s)	10,949,710	11,767,164	2,007,598	17.06%	8,234,669	6,381,019	1,293,891	20.28%	713,707
Building Maintenance (6000)	1,524,538	1,628,027	234,996	14.43%	1,440,030	1,198,731	226,804	18.92%	8,193
Parks Maintenance (6050)	931,249	1,086,322	175,336	16.14%	923,764	632,995	118,798	18.77%	56,538
Administration Building (6010)	180,000	303,395	39,948	13.17%	171,618	125,875	26,764	21.26%	13,184
Police Building (6020)	302,700	326,838	35,501	10.86%	347,124	235,479	65,776	27.93%	(30,275)
Service Complex (6030)	284,000	308,754	56,641	18.34%	286,484	195,687	48,325	24.69%	8,316
Total Other City Properties (Misc 6000s)	1,057,350	1,151,495	274,997	23.88%	1,005,607	643,642	149,355	23.20%	125,642
Council (7000)	782,785	790,165	147,025	18.61%	658,803	597,800	150,166	25.12%	(3,142)
Administrative Services (7010-7014)	3,730,157	3,897,425	596,628	15.31%	6,777,446	4,841,815	977,338	20.19%	(380,710)
Finance (7020)	3,181,093	3,257,178	798,793	24.52%	2,855,544	2,770,237	576,659	20.82%	222,134
Legal (7030)	410,000	456,847	51,511	11.28%	339,252	193,450	54,573	28.21%	(3,063)
Mayor's Court (7040)	335,840	422,683	82,808	19.59%	-	-	-	0.00%	82,808
Strategic Initiatives (7050-7054)	3,632,393	3,911,427	584,838	14.95%	-	-	-	0.00%	584,838
General Administration (7090)	5,551,974	5,812,899	965,077	16.60%	2,064,064	1,501,570	522,530	34.80%	442,546
<b>Revenue less Expenses Variance</b>	<b>16,273,697</b>	<b>12,311,240</b>	<b>9,136,069</b>		<b>18,142,562</b>	<b>37,815,479</b>	<b>7,680,144</b>		
Personal Services	29,750,663	29,839,754	6,085,584	20.39%	24,712,032	21,519,279	4,961,699	23.06%	1,123,885
Operating and Contractual Services	22,305,896	26,179,261	4,058,440	15.50%	18,512,525	12,435,526	2,576,747	20.72%	1,481,693
<b>Income Tax Breakdown</b>			<b>YTD</b>	<b>% Total</b>			<b>YTD</b>	<b>% Total</b>	
Other Funds			9,696,066	62.10%			7,795,531	75.66%	
Withholdings			3,587,397	22.97%			1,936,293	18.79%	
Net Profits			2,331,302	14.93%			571,437	5.55%	
Individuals									
<b>Total</b>			<b>15,614,765</b>	<b>100.00%</b>			<b>10,303,260</b>	<b>100.00%</b>	



CITY OF NEW ALBANY, OHIO  
 GENERAL FUND MONTHLY CASH FLOW  
 AS OF YTD MARCH 31, 2026

													C/O as %	
2010	January	February	March	April	May	June	July	August	September	October	November	December	FY TOTAL	of Rev/Exp
Beginning	6,521,884.10	5,802,451.69	5,826,252.56	6,185,423.20	5,546,456.11	6,028,178.97	5,742,906.76	5,386,241.25	5,449,227.77	5,260,856.82	2,639,498.25	3,087,184.89		
Revenue	484,943.22	685,934.06	1,101,427.97	946,927.72	1,227,631.96	860,599.04	609,609.66	1,056,536.79	841,159.92	360,003.96	1,275,669.00	501,780.14	9,952,223.44	24.15%
Expenses	1,204,375.63	662,133.19	742,257.33	1,585,894.81	745,909.10	1,145,871.25	966,275.17	993,550.27	1,029,530.87	2,981,362.53	827,982.36	838,069.08	13,723,211.59	17.51%
Balance	5,802,451.69	5,826,252.56	6,185,423.20	5,546,456.11	6,028,178.97	5,742,906.76	5,386,241.25	5,449,227.77	5,260,856.82	2,639,498.25	3,087,184.89	2,750,895.95		
Encumbrances	1,703,821.13	1,990,344.49	1,580,475.30	1,825,954.35	1,590,151.65	1,557,126.75	1,490,818.85	1,239,166.54	1,123,172.45	1,094,382.93	926,439.71	347,532.42		
Carryover	4,098,630.56	3,835,908.07	4,604,947.90	3,720,501.76	4,438,027.32	4,185,780.01	3,895,422.40	4,210,061.23	4,137,684.37	1,545,115.32	2,160,745.18	2,403,363.53		

2011	January	February	March	April	May	June	July	August	September	October	November	December	FY TOTAL	of Rev/Exp
Beginning	2,750,895.95	2,419,920.16	3,193,501.68	3,879,135.10	3,938,772.58	5,010,100.52	5,201,764.98	5,809,261.72	6,471,525.74	7,227,803.21	7,171,983.64	7,575,416.96		
Revenue	584,152.58	1,513,672.70	1,510,303.13	1,122,004.37	1,928,313.40	1,272,588.70	1,308,896.87	1,413,587.38	2,241,491.22	780,024.44	1,353,757.81	949,432.58	15,978,225.18	46.52%
Expenses	915,128.37	740,091.18	824,669.71	1,062,366.89	856,985.46	1,080,924.24	701,400.13	751,323.36	1,485,213.75	835,844.01	950,324.49	636,240.75	10,840,512.34	68.56%
Balance	2,419,920.16	3,193,501.68	3,879,135.10	3,938,772.58	5,010,100.52	5,201,764.98	5,809,261.72	6,471,525.74	7,227,803.21	7,171,983.64	7,575,416.96	7,888,608.79		
Encumbrances	1,929,746.99	1,714,180.95	1,702,370.17	1,938,513.05	1,500,661.05	1,377,170.13	1,468,117.01	1,217,070.33	1,288,925.85	1,173,023.14	835,279.35	456,136.84		
Carryover	490,173.17	1,479,320.73	2,176,764.93	2,000,259.53	3,509,439.47	3,824,594.85	4,341,144.71	5,254,455.41	5,938,877.36	5,998,960.50	6,740,137.61	7,432,471.95		

2012	January	February	March	April	May	June	July	August	September	October	November	December	FY TOTAL	of Rev/Exp
Beginning	7,888,608.79	6,384,850.24	6,415,168.48	6,660,195.86	5,640,810.19	7,301,074.12	7,813,634.26	7,659,066.71	7,019,688.39	6,901,625.49	6,598,741.48	7,438,487.30		
Revenue	811,490.33	1,085,833.33	1,154,596.30	676,828.59	2,635,656.99	1,317,564.73	696,477.15	1,311,560.63	677,419.75	941,168.63	1,609,511.01	1,762,671.57	14,680,779.01	54.28%
Expenses	2,315,248.88	1,055,515.09	909,568.92	1,696,214.26	905,004.59	805,004.59	1,413,044.70	1,950,938.95	795,482.65	1,244,052.64	769,765.19	793,536.04	14,161,764.97	56.27%
Balance	6,384,850.24	6,415,168.48	6,660,195.86	5,640,810.19	7,301,074.12	7,813,634.26	7,659,066.71	7,019,688.39	6,901,625.49	6,598,741.48	7,438,487.30	8,407,622.83		
Encumbrances	2,457,024.57	2,156,985.59	2,158,685.45	2,248,951.39	1,903,380.60	2,281,054.68	1,868,225.07	1,550,983.42	1,602,467.51	1,602,570.96	997,843.28	438,959.85		
Carryover	3,927,825.67	4,258,182.89	4,501,510.41	3,391,858.80	5,397,693.52	5,532,579.58	5,790,841.64	5,468,704.97	5,299,157.98	4,996,170.52	6,440,644.02	7,968,662.98		

2013	January	February	March	April	May	June	July	August	September	October	November	December	FY TOTAL	of Rev/Exp
Beginning	8,407,622.83	8,825,946.82	9,140,750.19	9,247,157.51	9,353,928.31	9,746,543.85	10,401,918.25	10,344,065.57	10,857,240.59	10,345,844.82	10,331,750.31	10,687,334.95		
Revenue	934,526.63	1,278,953.15	1,418,501.99	948,612.59	2,503,806.47	1,469,536.55	805,383.00	1,371,908.43	1,722,969.22	962,659.77	1,024,853.36	979,344.69	15,421,055.85	63.79%
Expenses	516,202.64	964,149.78	1,312,094.67	841,841.79	2,111,190.93	1,416,162.15	863,235.68	858,733.41	2,234,364.99	976,754.28	669,268.72	1,011,010.75	13,213,009.79	74.45%
Balance	8,825,946.82	9,140,750.19	9,247,157.51	9,353,928.31	9,746,543.85	10,401,918.25	10,344,065.57	10,857,240.59	10,345,844.82	10,331,750.31	10,687,334.95	10,615,668.89		
Encumbrances	2,540,420.98	2,253,112.20	2,199,630.99	2,579,672.96	2,118,815.92	1,875,670.53	2,058,722.79	1,663,056.51	1,407,449.63	1,595,169.23	1,492,459.94	778,267.42		
Carryover	6,285,525.84	6,887,637.99	7,047,526.52	6,774,255.35	7,627,727.93	8,526,247.72	8,285,342.78	9,194,184.08	8,938,395.19	8,736,581.08	9,194,875.01	9,837,401.47		

2014	January	February	March	April	May	June	July	August	September	October	November	December	FY TOTAL	of Rev/Exp
Beginning	10,615,668.89	11,368,897.64	11,608,312.95	12,896,809.84	13,102,055.17	13,908,913.07	14,590,838.93	14,752,143.43	15,377,053.79	15,460,555.83	11,367,891.73	11,528,459.16		
Revenue	1,657,776.86	1,232,512.82	2,313,892.07	1,013,122.63	1,973,891.47	1,490,245.40	1,031,334.66	1,428,151.90	984,266.26	1,170,950.10	1,249,714.84	872,304.81	16,418,163.82	64.76%
Expenses	904,548.11	993,097.51	1,025,395.18	807,877.30	1,167,033.57	808,319.54	807,030.16	803,241.54	900,764.22	5,263,614.20	1,089,147.41	885,553.77	15,518,622.51	68.52%
Balance	11,368,897.64	11,608,312.95	12,896,809.84	13,102,055.17	13,908,913.07	14,590,838.93	14,752,143.43	15,377,053.79	15,460,555.83	11,367,891.73	11,528,459.16	11,515,210.20		
Encumbrances	2,582,049.22	2,409,972.13	2,108,141.78	3,493,398.71	3,069,416.68	2,953,495.45	2,751,630.75	2,578,116.88	2,281,251.24	1,833,863.49	1,544,775.59	882,062.06		
Carryover	8,786,848.42	9,198,340.82	10,788,668.06	9,608,656.46	10,839,496.39	11,637,343.48	12,000,512.68	12,798,936.91	13,179,304.59	9,534,028.24	9,983,683.57	10,633,148.14		

2015	January	February	March	April	May	June	July	August	September	October	November	December	FY TOTAL	of Rev/Exp
Beginning	11,515,210.20	11,662,746.81	12,234,178.04	12,505,249.80	11,479,076.76	12,787,102.46	14,142,774.07	14,560,058.24	15,395,215.26	15,526,942.95	15,765,937.14	16,139,877.68		
Revenue	1,140,984.36	1,430,019.31	1,216,681.18	1,223,065.30	2,511,227.07	2,372,727.14	1,400,436.08	1,841,480.03	5,417,959.06	1,504,331.97	1,390,125.88	1,341,292.11	22,790,329.49	55.97%
Expenses	993,447.75	858,588.08	945,609.42	2,249,338.34	1,203,201.37	1,017,055.53	983,151.91	1,006,323.01	5,286,231.37	1,265,337.78	1,016,185.34	3,242,189.17	20,066,559.07	63.57%
Balance	11,662,746.81	12,234,178.04	12,505,249.80	11,479,076.76	12,787,102.46	14,142,774.07	14,560,058.24	15,395,215.26	15,526,942.95	15,765,937.14	16,139,877.68	14,238,980.62		
Encumbrances	4,398,434.29	4,482,083.23	4,603,754.57	3,987,119.68	3,651,345.30	3,609,803.27	3,345,873.59	3,006,888.01	2,912,870.06	2,462,559.47	2,045,656.16	1,482,917.61		
Carryover	7,264,312.52	7,752,094.81	7,901,495.23	7,491,957.08	9,135,757.16	10,532,970.80	11,214,184.65	12,388,327.25	12,614,072.89	13,303,377.67	14,094,221.52	12,756,063.01		

2016	January	February	March	April	May	June	July	August	September	October	November	December	FY TOTAL	of Rev/Exp
Beginning	14,238,980.62	14,523,281.89	14,656,458.52	14,041,507.07	14,010,811.24	15,985,825.12	17,082,832.45	14,412,701.71	15,134,892.86	12,290,277.02	12,503,488.72	13,115,630.29		
Revenue	1,215,970.92	1,197,364.29	1,614,095.06	1,286,050.78	3,011,543.45	2,044,814.61	1,316,991.16	1,920,822.02	1,114,798.44	1,097,801.46	1,689,446.91	1,093,351.17	18,603,050.27	66.11%
Expenses	931,669.65	1,064,187.66	2,229,046.51	1,316,746.61	1,036,529.57	947,807.28	3,987,121.90	1,198,630.87	3,959,414.28	884,589.76	1,077,305.34	916,564.20	19,549,613.63	62.91%
Balance	14,523,281.89	14,656,458.52	14,041,507.07	14,010,811.24	15,985,825.12	17,082,832.45	14,412,701.71	15,134,892.86	12,290,277.02	12,503,488.72	13,115,630.29	12,292,417.26		
Encumbrances	4,972,179.65	4,635,858.58	4,488,684.45	4,008,576.33	3,699,068.83	3,456,321.15	3,170,715.81	2,581,595.01	2,148,386.18	1,946,386.32	1,424,884.61	993,810.85		
Carryover	9,551,102.24	10,020,599.94	9,552,822.62	10,002,234.91	12,286,756.29	13,626,511.30	11,241,985.90	12,553,297.85	10,141,890.84	10,557,102.40	11,690,745.68	12,298,606.41		

2017	January	February	March	April	May	June	July	August	September	October	November	December	YTD TOTAL	of Rev/Exp
Beginning	13,292,417.26	13,698,844.50	13,922,810.18	14,343,534.85	14,077,999.57	15,195,756.13	16,606,874.28	17,070,802.79	18,155,936.13	18,034,878.43	18,789,058.76	19,458,971.09		
Revenue	1,586,250.73	1,372,832.16	1,759,583.68	1,554,078.30	1,950,096.98	2,504,459.88	1,521,382.81	2,075,264.16	1,190,106.79	1,852,804.64	1,664,785.24	1,149,058.55	20,180,703.92	82.22%
Expenses	1,179,823.49	1,148,866.48	1,338,859.01	1,819,613.58	832,340.42	1,093,341.73	1,057,454.30	990,130.82	1,311,164.49	1,098,				

	2018	2019	2020	2021	2022	2023	2024	2025	2026		C/O as %			
	January	February	March	April	May	June	July	August	September	October	November	December	YTD TOTAL	of Rev/Exp
Beginning	17,820,113.40	18,829,602.23	19,534,463.04	18,691,666.30	19,009,447.45	12,333,890.47	13,977,513.31	15,851,480.72	16,428,833.89	16,969,702.42	17,833,097.35	16,525,626.82		
Revenue	2,157,463.50	1,760,218.29	1,939,753.69	1,681,545.96	2,545,922.70	2,837,693.73	3,043,894.10	2,049,386.75	1,481,691.81	1,898,490.18	2,117,367.06	1,143,440.75	24,656,868.52	59.57%
Expenses	1,147,974.67	1,055,357.48	1,363,764.81	1,363,764.81	9,221,479.68	1,194,070.89	1,169,926.69	1,472,033.58	940,823.28	1,035,095.25	3,424,837.59	1,442,019.05	26,249,933.40	55.95%
Balance	18,829,602.23	19,534,463.04	18,691,666.30	19,009,447.45	12,333,890.47	13,977,513.31	15,851,480.72	16,428,833.89	16,969,702.42	17,833,097.35	16,525,626.82	16,227,048.52		
Encumbrances	6,396,769.07	6,111,214.06	5,120,769.06	4,734,976.99	4,418,750.83	3,856,870.17	3,357,486.12	3,644,893.44	2,621,221.67	2,387,055.16	2,178,746.25	1,539,499.06		
Carrlover	12,432,833.16	13,423,248.98	13,570,897.24	14,274,470.46	7,915,139.64	10,120,643.14	12,493,994.60	12,783,940.45	14,348,480.75	15,446,042.19	14,346,880.57	14,687,549.46		
Beginning	16,227,048.52	16,569,076.41	17,035,596.30	17,974,214.60	16,664,890.71	17,271,679.09	19,073,032.85	19,894,662.78	20,798,122.00	21,183,895.53	21,090,805.52	21,760,909.52		
Revenue	1,794,004.33	1,793,903.49	2,526,713.21	2,392,554.52	2,596,066.84	3,161,537.61	2,115,623.84	2,497,350.13	1,716,330.78	1,306,106.25	1,814,883.00	2,463,838.18	26,178,912.18	75.55%
Expenses	1,451,976.44	1,327,383.60	1,588,094.91	3,701,878.41	1,989,278.46	1,360,183.85	1,293,993.91	1,593,890.91	1,330,557.25	1,399,196.26	1,144,779.00	2,873,420.90	21,054,633.90	93.93%
Balance	16,569,076.41	17,035,596.30	17,974,214.60	16,664,890.71	17,271,679.09	19,073,032.85	19,894,662.78	20,798,122.00	21,183,895.53	21,090,805.52	21,760,909.52	21,351,326.80		
Encumbrances	4,744,469.41	4,737,991.63	4,221,137.02	4,001,439.38	3,855,903.33	3,620,791.30	3,325,719.67	3,155,783.62	2,749,199.57	2,381,260.00	2,232,291.00	1,573,676.51		
Carrlover	11,824,607.00	12,297,604.67	13,753,077.58	12,663,451.33	13,415,775.76	15,452,241.55	16,568,943.11	17,642,338.38	18,434,695.96	18,709,545.52	19,528,618.52	19,777,650.29		
Beginning	21,351,326.80	21,592,195.58	22,511,430.78	23,283,560.38	22,605,585.77	23,311,992.76	23,594,005.87	23,591,578.95	25,287,869.86	27,086,378.42	27,733,439.63	27,304,100.53		
Revenue	1,966,718.43	2,279,298.76	2,443,809.23	2,053,924.36	2,255,975.97	1,632,365.16	1,732,166.45	3,032,940.48	3,205,599.79	2,220,036.27	2,230,309.71	2,164,398.74	27,217,543.35	96.01%
Expenses	1,725,849.65	1,360,063.56	1,671,679.63	2,731,898.97	1,549,568.98	1,350,352.05	1,734,593.37	1,336,649.57	1,407,091.23	1,572,975.06	2,659,648.81	1,901,840.85	21,002,211.73	124.42%
Balance	21,592,195.58	22,511,430.78	23,283,560.38	22,605,585.77	23,311,992.76	23,594,005.87	23,591,578.95	25,287,869.86	27,086,378.42	27,733,439.63	27,304,100.53	27,566,658.42		
Encumbrances	5,410,054.67	5,235,325.42	5,125,265.46	5,013,364.38	4,502,634.39	4,282,737.40	4,008,241.42	3,546,338.16	3,393,916.17	2,899,846.39	2,705,346.13	1,434,849.82		
Carrlover	16,182,140.91	17,276,105.36	18,158,294.92	17,592,221.39	18,809,358.37	19,311,268.47	19,583,337.53	21,741,531.70	23,692,462.25	24,833,593.24	24,598,754.40	26,131,808.60		
Beginning	27,566,658.42	27,935,355.24	29,503,563.28	30,778,050.06	31,955,184.54	33,717,168.12	31,589,642.53	24,561,503.04	25,902,497.86	26,393,809.33	27,685,745.28	28,574,869.83		
Revenue	1,978,747.73	2,940,534.18	2,694,025.12	2,657,338.46	3,710,325.17	3,298,021.13	2,773,084.99	2,844,258.53	1,990,963.28	2,675,125.54	2,461,267.49	2,000,473.2	32,024,164.82	79.36%
Expenses	1,610,050.91	1,372,326.14	1,419,538.34	1,480,203.98	1,948,341.59	5,425,546.72	9,801,224.48	1,503,263.71	1,499,651.81	1,383,189.59	1,572,142.94	3,299,493.38	32,314,973.59	78.64%
Balance	27,935,355.24	29,503,563.28	30,778,050.06	31,955,184.54	33,717,168.12	31,589,642.53	24,561,503.04	25,902,497.86	26,393,809.33	27,685,745.28	28,574,869.83	27,251,849.65		
Encumbrances	5,219,901.17	5,286,124.66	5,062,316.68	4,770,948.77	4,605,713.41	4,115,334.02	3,822,194.14	3,464,955.10	3,110,982.85	2,912,380.85	2,526,353.77	1,862,204.71		
Carrlover	22,715,454.07	24,217,438.62	25,715,733.38	27,184,235.77	29,111,454.71	27,474,308.51	20,739,308.90	22,437,542.76	23,282,826.48	24,773,364.43	26,048,516.06	25,413,644.94		
Beginning	27,275,849.65	27,714,895.21	28,995,962.99	30,104,339.37	30,970,063.98	28,141,284.29	29,850,328.60	30,337,841.31	31,547,956.99	31,590,302.97	32,615,023.10	33,437,148.93		
Revenue	2,257,887.70	2,890,935.71	2,689,691.78	2,471,040.38	4,222,803.56	3,387,999.87	2,440,297.10	3,183,889.54	1,790,919.80	2,692,835.77	2,611,318.63	2,267,280.46	33,106,900.30	93.32%
Expenses	1,818,842.14	1,609,867.93	1,581,315.40	1,605,315.77	1,251,583.25	1,678,955.56	1,952,784.39	1,973,773.86	1,748,573.82	1,668,115.64	1,789,192.80	2,260,888.42	27,199,208.98	113.60%
Balance	27,714,895.21	28,995,962.99	30,104,339.37	30,970,063.98	28,141,284.29	29,850,328.60	30,337,841.31	31,547,956.99	31,590,302.97	32,615,023.10	33,437,148.93	33,183,540.97		
Encumbrances	4,199,271.88	4,830,182.76	4,697,613.38	4,335,595.70	4,233,530.62	4,235,995.29	4,333,529.32	3,968,091.27	3,641,671.19	3,408,757.63	3,253,528.30	2,286,579.47		
Carrlover	23,515,623.33	24,165,780.23	25,406,725.99	26,634,468.28	23,817,753.67	25,614,333.31	26,004,311.59	27,579,865.72	27,948,631.78	29,206,265.47	30,183,620.63	30,896,961.50		
Beginning	33,183,540.97	33,502,900.53	34,355,064.32	35,015,365.11	36,102,882.95	40,596,671.24	41,949,527.78	42,796,054.98	44,571,147.08	40,681,597.53	42,129,477.54	43,399,901.49		
Revenue	2,530,315.39	2,748,893.76	2,657,177.70	2,962,646.75	6,941,122.94	3,743,354.37	2,837,727.67	3,839,161.92	2,471,038.48	3,668,460.32	3,379,104.18	6,779,791.1	44,558,794.57	86.91%
Expenses	2,210,955.83	1,896,729.97	1,996,876.91	1,875,128.91	2,447,334.65	2,390,497.83	1,991,200.47	2,064,069.82	6,360,588.03	2,220,580.31	2,108,680.23	8,260,041.42	35,822,684.38	108.11%
Balance	33,502,900.53	34,355,064.32	35,015,365.11	36,102,882.95	40,596,671.24	41,949,527.78	42,796,054.98	44,571,147.08	40,681,597.53	42,129,477.54	43,399,901.49	41,919,651.16		
Encumbrances	5,981,494.25	6,202,994.01	5,983,333.87	5,771,128.37	5,688,354.32	5,531,735.67	5,200,214.05	4,895,828.09	4,830,489.94	4,380,631.20	4,165,394.15	3,193,530.15		
Carrlover	27,521,406.28	28,152,070.31	29,032,031.24	30,331,754.58	34,908,316.92	36,417,792.11	37,595,840.93	39,675,318.99	35,851,107.59	37,748,846.34	39,234,507.34	38,726,121.01		
Beginning	41,919,651.16	43,596,474.30	44,340,318.03	45,220,411.10	48,084,469.78	53,320,225.16	55,448,992.96	56,908,968.12	58,880,857.95	51,280,488.82	53,760,922.80	55,669,255.21		
Revenue	3,621,105.04	3,244,015.23	2,923,748.27	5,061,943.00	8,113,955.32	4,812,907.23	3,792,947.41	4,401,107.07	3,698,339.15	4,754,018.74	4,756,878.74	4,157,517.50	53,338,482.70	100.16%
Expenses	1,944,281.90	2,500,171.50	2,043,655.20	2,197,884.32	2,878,199.94	2,684,139.43	2,332,972.25	2,429,217.24	11,298,708.28	2,273,584.76	2,848,546.33	2,753,516.75	38,184,877.90	139.91%
Balance	43,596,474.30	44,340,318.03	45,220,411.10	48,084,469.78	53,320,225.16	55,448,992.96	56,908,968.12	58,880,857.95	51,280,488.82	53,760,922.80	55,669,255.21	57,073,255.96		
Encumbrances	6,969,112.51	7,787,118.12	7,918,560.36	7,434,473.74	7,230,508.16	7,211,650.54	6,770,399.27	6,230,917.39	5,508,096.03	5,425,764.26	4,837,239.10	3,648,167.52		
Carrlover	36,627,361.79	36,553,199.91	37,301,850.74	40,649,996.04	46,089,717.00	48,237,342.42	50,138,568.85	52,649,940.56	45,772,392.79	48,335,158.54	50,832,016.11	53,425,088.44		
Beginning	57,073,255.96	57,023,441.58	59,437,565.72	61,860,260.80	65,256,925.85	70,113,897.20	73,685,562.48	58,486,276.29	61,493,053.41	59,106,231.30	62,086,905.09	65,251,930.04		
Revenue	4,011,210.44	4,724,410.54	4,875,020.05	5,852,970.30	7,950,905.27	6,605,830.02	6,871,082.35	5,446,925.54	4,798,364.99	6,193,851.94	5,717,438.70	7,302,645.14	70,350,655.28	67.19%
Expenses	4,061,024.82	2,310,286.40	2,452,324.97	2,456,305.25	3,093,933.92	3,034,164.74	22,070,368.54	2,440,148.42	7,185,187.10	3,213,178.15	2,552,413.75	21,730,553.24	76,599,889.30	61.70%
Balance	57,023,441.58	59,437,565.72	61,860,260.80	65,256,925.85	70,113,897.20	73,685,562.48	58,486,276.29	61,493,053.41	59,106,231.30	62,086,905.09	65,251,930.04	60,824,021.94		
Encumbrances	6,183,053.45	8,284,283.56	8,120,468.73	7,819,820.07	7,435,632.90	6,919,240.55	6,484,944.60	6,611,183.54	5,837,449.04	5,415,433.28	4,725,002.40	3,558,879.53		
Carrlover	50,840,388.13	51,153,282.16	53,739,792.07	57,437,105.78	62,678,264.30	66,766,321.93	52,001,331.69	54,881,869.87	53,268,782.26	56,671				



**CITY OF NEW ALBANY, OHIO**  
**INCOME TAX TREND ANALYSIS - GENERAL FUND**  
**FISCAL YEARS 2017 - 2026**

<b>Total City Income Taxes</b>	<b>Jan</b>	<b>Feb</b>	<b>Mar</b>	<b>Apr</b>	<b>May</b>	<b>Jun</b>	<b>Jul</b>	<b>Aug</b>	<b>Sep</b>	<b>Oct</b>	<b>Nov</b>	<b>Dec</b>	<b>YTD</b>	<b>Budget</b>	<b>FY Actual</b>
<b>2026</b> Cash Collections	\$5,783,559	\$6,193,450	\$3,637,757	\$0	\$0	\$0	\$0	\$0	\$0	\$0	\$0	\$0	\$15,614,765	\$52,064,357	NA
3-yr Fesd Collections	\$3,800,490	\$3,972,273	\$2,932,273	\$4,907,333	\$8,013,924	\$5,311,015	\$4,934,924	\$3,998,679	\$3,643,285	\$5,430,948	\$4,988,290	\$4,423,976	\$10,705,037	\$52,064,357	
5-yr Fesd Collections	\$3,827,696	\$4,398,398	\$3,039,404	\$4,778,380	\$7,682,839	\$5,579,666	\$4,879,137	\$4,053,171	\$3,490,420	\$5,177,235	\$4,859,609	\$3,996,159	\$11,265,498	\$52,064,357	
Percent of Budget	11.11%	11.90%	6.99%	0.00%	0.00%	0.00%	0.00%	0.00%	0.00%	0.00%	0.00%	0.00%	29.99%	29.99%	NA
Percent of FY Actual	NA	NA	NA	NA	NA	NA	NA	NA	NA	NA	NA	NA	NA	NA	NA
<b>2025</b> Cash Collections	\$3,328,435	\$3,950,970	\$3,023,856	\$5,057,793	\$6,365,263	\$5,311,401	\$5,694,336	\$3,600,654	\$3,722,219	\$5,198,133	\$4,607,074	\$5,033,458	\$10,303,261	\$49,737,969	\$54,893,591
Percent of Budget	6.69%	7.94%	6.08%	10.17%	12.80%	10.68%	11.45%	7.24%	7.48%	10.45%	9.26%	10.12%	20.72%	110.37%	110.37%
Percent of FY Actual	6.06%	7.20%	5.51%	9.21%	11.60%	9.68%	10.37%	6.56%	6.78%	9.47%	8.39%	9.17%	18.77%	90.61%	100.00%
<b>2024</b> Cash Collections	\$3,216,782	\$2,771,915	\$2,302,718	\$3,625,400	\$6,259,281	\$3,657,319	\$3,276,957	\$2,954,954	\$2,816,442	\$4,245,905	\$4,009,086	\$3,237,982	\$8,291,415	\$39,693,189	\$42,374,740
Percent of Budget	8.10%	6.98%	5.80%	9.13%	15.77%	9.21%	8.26%	7.44%	7.10%	10.70%	10.10%	8.16%	20.89%	106.76%	106.76%
Percent of FY Actual	7.59%	6.54%	5.43%	8.56%	14.77%	8.63%	7.73%	6.97%	6.65%	10.02%	9.46%	7.64%	19.57%	93.67%	100.00%
<b>2023</b> Cash Collections	\$2,245,458	\$2,465,131	\$1,455,882	\$2,667,649	\$5,911,957	\$3,315,853	\$2,443,369	\$2,693,485	\$1,888,393	\$3,117,946	\$2,921,939	\$1,961,381	\$6,166,471	\$30,995,626	\$33,088,442
Percent of Budget	7.24%	7.95%	4.70%	8.61%	19.07%	10.70%	7.88%	8.69%	6.09%	10.06%	9.43%	6.33%	19.89%	106.75%	106.75%
Percent of FY Actual	6.79%	7.45%	4.40%	8.06%	17.87%	10.02%	7.38%	8.14%	5.71%	9.42%	8.83%	5.93%	18.64%	93.68%	100.00%
<b>2022</b> Cash Collections	\$2,068,772	\$2,697,588	\$1,649,422	\$2,243,615	\$3,724,911	\$3,176,378	\$2,273,049	\$2,263,495	\$1,456,102	\$2,321,926	\$2,340,329	\$1,379,449	\$6,415,782	\$26,361,175	\$27,595,036
Percent of Budget	7.85%	10.23%	6.26%	8.51%	14.13%	12.05%	8.62%	8.59%	5.52%	8.81%	8.88%	5.23%	24.34%	104.68%	104.68%
Percent of FY Actual	7.50%	9.78%	5.98%	8.13%	13.50%	11.51%	8.24%	8.20%	5.28%	8.41%	8.48%	5.00%	23.25%	95.53%	100.00%
<b>2021</b> Cash Collections	\$1,863,595	\$2,734,420	\$1,670,927	\$2,288,606	\$3,275,904	\$3,085,538	\$2,530,262	\$1,959,919	\$1,718,799	\$2,324,922	\$2,274,636	\$1,670,735	\$6,268,942	\$26,270,986	\$27,398,265
Percent of Budget	7.09%	10.41%	6.36%	8.71%	12.47%	11.75%	9.63%	7.46%	6.54%	8.85%	8.66%	6.36%	23.86%	104.29%	104.29%
Percent of FY Actual	6.80%	9.98%	6.10%	8.35%	11.96%	11.26%	9.24%	7.15%	6.27%	8.49%	8.30%	6.10%	22.88%	95.89%	100.00%
<b>2020</b> Cash Collections	\$1,731,441	\$2,081,233	\$1,469,545	\$1,770,261	\$1,545,052	\$1,445,570	\$1,319,809	\$2,791,098	\$2,178,855	\$1,974,968	\$1,943,823	\$1,714,060	\$5,282,220	\$20,726,464	\$21,965,717
Percent of Budget	8.35%	10.04%	7.09%	8.54%	7.45%	6.97%	6.37%	13.47%	10.51%	9.53%	9.38%	8.27%	25.49%	105.98%	105.98%
Percent of FY Actual	7.88%	9.47%	6.69%	8.06%	7.03%	6.58%	6.01%	12.71%	9.92%	8.99%	8.85%	7.80%	24.05%	94.36%	100.00%
<b>2019</b> Cash Collections	\$ 1,567,702	\$ 1,597,402	\$ 1,462,397	\$ 2,153,908	\$ 2,347,461	\$2,544,450	\$1,738,709	\$1,633,516	\$1,397,460	\$1,866,209	\$1,625,932	\$1,591,688	\$ 4,627,502	\$20,250,000	\$21,526,836
Percent of Budget	7.74%	7.89%	7.22%	10.64%	11.59%	12.57%	8.59%	8.07%	6.90%	9.22%	8.03%	7.86%	22.85%	106.31%	106.31%
Percent of FY Actual	7.28%	7.42%	6.79%	10.01%	10.90%	11.82%	8.08%	7.59%	6.49%	8.67%	7.55%	7.39%	21.50%	94.07%	100.00%
<b>2018</b> Cash Collections	\$ 1,936,965	\$ 1,526,944	\$ 1,093,027	\$ 1,475,448	\$ 2,218,640	\$ 2,242,146	\$ 1,776,689	\$ 1,290,744	\$ 1,343,404	\$ 1,689,652	\$ 1,901,356	\$ 1,393,239	\$ 4,556,936	\$18,000,000	\$19,888,254
Percent of Budget	10.76%	8.48%	6.07%	8.20%	12.33%	12.46%	9.87%	7.17%	7.46%	9.39%	10.56%	7.74%	25.32%	110.49%	110.49%
Percent of FY Actual	9.74%	7.68%	5.50%	7.42%	11.16%	11.27%	8.93%	6.49%	6.75%	8.50%	9.56%	7.01%	22.91%	90.51%	100.00%
<b>2017</b> Cash Collections	\$ 1,465,423	\$ 1,267,540	\$ 993,549	\$ 1,398,387	\$ 1,740,936	\$ 2,234,470	\$ 1,307,447	\$ 1,353,176	\$ 997,383	\$ 1,633,274	\$ 1,502,232	\$ 1,063,373	\$3,726,512	\$15,894,526	\$16,957,190
Percent of Budget	9.22%	7.97%	6.25%	8.80%	10.95%	14.06%	8.23%	8.51%	6.28%	10.28%	9.45%	6.69%	23.45%	106.69%	106.69%
Percent of FY Actual	8.64%	7.47%	5.86%	8.25%	10.27%	13.18%	7.71%	7.98%	5.88%	9.63%	8.86%	6.27%	21.98%	93.73%	100.00%



**CITY OF NEW ALBANY, OHIO**  
**INCOME TAX TREND ANALYSIS - GENERAL FUND**  
**FISCAL YEARS 2017 - 2026**

Total City Income Taxes	Jan	Feb	Mar	Apr	May	Jun	Jul	Aug	Sep	Oct	Nov	Dec	YTD	Budget	FY Actual
<i>Most-recent 3-year basis</i>															
Avg Pct of Budget	7.30%	7.63%	5.63%	9.43%	15.39%	10.20%	9.48%	7.68%	7.00%	10.43%	9.58%	8.50%	20.56%	100.00%	108.25%
Avg Pct of FY Actual	6.74%	7.05%	5.20%	8.71%	14.22%	9.42%	8.76%	7.10%	6.46%	9.64%	8.85%	7.85%	18.99%	92.38%	100.00%

Revenue projection as a % of budget	\$75,943,010	Revenue projection as a % of YTD Actual	\$82,205,017
Opportunity/(risk) to Revenue Projections	\$23,878,653	Opportunity/(risk) to Revenue Projections	\$30,140,660

<i>5-Year Basis</i>															
Avg Pct of Budget	7.35%	8.45%	5.84%	9.18%	14.76%	10.72%	9.37%	7.78%	6.70%	9.94%	9.33%	7.68%	21.64%	100.00%	107.10%
Avg Pct of FY Actual	6.86%	7.89%	5.45%	8.57%	13.78%	10.01%	8.75%	7.27%	6.26%	9.28%	8.71%	7.17%	20.20%	93.37%	100.00%

Revenue projection as a % of budget	\$72,164,830	Revenue projection as a % of YTD Actual	\$77,290,177
Opportunity/(risk) to Revenue Projections	\$20,100,473	Opportunity/(risk) to Revenue Projections	\$25,225,820



CITY OF NEW ALBANY, OHIO  
MARCH 2026 YTD REVENUE ANALYSIS

General Fund

	2026 YTD	2026 Adopted Budget	2026 Amended Budget	Change in 2026 Budget	Uncollected YTD Balance	% Collected	2025 YTD	YTD Variance	% H/(L)
<b>Taxes</b>									
Property Taxes	\$ 288,735	\$ 2,730,000	\$ 2,730,000	\$ -	\$ 2,441,265	10.58%	\$ 1,188,268	\$ (899,533)	(75.70%)
Income Taxes	15,614,765	52,064,357	52,064,357	-	36,449,591	29.99%	10,303,260	5,311,505	51.55%
Hotel Taxes	170,863	750,000	750,000	-	579,137	22.78%	117,818	53,045	45.02%
<b>Total Taxes</b>	<b>\$ 16,074,363</b>	<b>\$ 55,544,357</b>	<b>\$ 55,544,357</b>	<b>\$ -</b>	<b>\$ 39,469,994</b>	<b>28.94%</b>	<b>\$ 11,609,347</b>	<b>\$ 4,465,016</b>	<b>38.46%</b>
<b>Intergovernmental</b>									
State Shared Taxes & Permits	\$ 38,240	\$ 364,200	\$ 364,200	\$ -	\$ 325,960	10.50%	\$ 35,414	\$ 2,826	7.98%
Street Maint Taxes	-	-	-	-	-	0.00%	-	-	0.00%
Grants & Other Intergovernmental	74	50,000	50,000	-	49,926	0.15%	11,904	(11,831)	(99.38%)
<b>Total Intergovernmental</b>	<b>\$ 38,313</b>	<b>\$ 414,200</b>	<b>\$ 414,200</b>	<b>\$ -</b>	<b>\$ 375,887</b>	<b>9.25%</b>	<b>\$ 47,318</b>	<b>\$ (9,005)</b>	<b>(19.03%)</b>
<b>Charges for Service</b>									
Administrative Service Charges	\$ 20,676	\$ 98,000	\$ 98,000	\$ -	\$ 77,324	21.10%	\$ 47,864	\$ (27,187)	(56.80%)
Water & Sewer Fees	-	-	-	-	-	0.00%	-	-	0.00%
Building Department Fees	100,901	275,000	275,000	-	174,099	36.69%	65,619	35,282	53.77%
Right of Way Fees	9,000	30,000	30,000	-	21,000	30.00%	25,100	(16,100)	(64.14%)
Police Fees	3,961	23,000	23,000	-	19,039	17.22%	4,549	(588)	(12.93%)
Other Fees & Charges	1,024,864	4,385,699	4,385,699	-	3,360,835	23.37%	3	1,024,861	30,962,568.88%
<b>Total Charges for Service</b>	<b>\$ 1,159,403</b>	<b>\$ 4,811,699</b>	<b>\$ 4,811,699</b>	<b>\$ -</b>	<b>\$ 3,652,296</b>	<b>24.10%</b>	<b>\$ 143,135</b>	<b>\$ 1,016,268</b>	<b>710.01%</b>
<b>Fines, Licenses &amp; Permits</b>									
Fines & Forfeitures	\$ 31,230	\$ 135,000	\$ 135,000	\$ -	\$ 103,770	23.13%	\$ 30,371	\$ 859	2.83%
Building, Licenses & Permits	432,215	1,645,000	1,645,000	-	1,212,785	26.27%	509,635	(77,420)	(15.19%)
Other Licenses & Permits	20,926	130,000	130,000	-	109,074	16.10%	25,062	(4,137)	(16.51%)
<b>Total Fines, Licenses &amp; Permits</b>	<b>\$ 484,371</b>	<b>\$ 1,910,000</b>	<b>\$ 1,910,000</b>	<b>\$ -</b>	<b>\$ 1,425,629</b>	<b>25.36%</b>	<b>\$ 565,068</b>	<b>\$ (80,698)</b>	<b>(14.28%)</b>
<b>Other Sources</b>									
Sale of Assets	\$ 280,825	\$ 25,000	\$ 25,000	\$ -	\$ (255,825)	1123.30%	\$ 2,931	\$ 277,894	9,481.20%
Payment in Lieu of Taxes (PILOT)	-	1,100,000	1,100,000	-	1,100,000	0.00%	-	-	0.00%
Investment Income	1,136,477	3,400,000	3,400,000	-	2,263,523	33.43%	1,132,505	3,972	0.35%
Rental & Lease Income	8,566	65,000	65,000	-	56,434	13.18%	10,844	(2,278)	(21.01%)
Reimbursements	89,673	1,000,000	1,000,000	-	910,327	8.97%	95,438	(5,765)	(6.04%)
Other Income	8,102	60,000	60,000	-	51,898	13.50%	1,612,005	(1,603,903)	(99.50%)
Proceeds of Bonds	-	-	-	-	-	0.00%	-	-	0.00%
Proceeds of Notes/Loans	-	-	-	-	-	0.00%	-	-	0.00%
<b>Total Other Sources</b>	<b>\$ 1,523,643</b>	<b>\$ 5,650,000</b>	<b>\$ 5,650,000</b>	<b>\$ -</b>	<b>\$ 4,126,357</b>	<b>26.97%</b>	<b>\$ 2,853,722</b>	<b>\$ (1,330,079)</b>	<b>(46.61%)</b>
<b>Transfers and Advances</b>									
Transfers and Advances	\$ 4,856,082	\$ 14,478,674	\$ 14,533,174	\$ 54,500	\$ 9,677,092	33.41%	\$ 1,833,823	\$ 3,022,259	164.81%
<b>Total Transfers and Advances</b>	<b>\$ 4,856,082</b>	<b>\$ 14,478,674</b>	<b>\$ 14,533,174</b>	<b>\$ 54,500</b>	<b>\$ 9,677,092</b>	<b>33.41%</b>	<b>\$ 1,833,823</b>	<b>\$ 3,022,259</b>	<b>164.81%</b>
<b>Grand Total</b>	<b>\$ 24,136,175</b>	<b>\$ 82,808,930</b>	<b>\$ 82,863,430</b>	<b>\$ 54,500</b>	<b>\$ 58,727,254</b>	<b>29.13%</b>	<b>\$ 17,052,414</b>	<b>\$ 7,083,761</b>	<b>41.54%</b>
<b>Adjustments</b>									
Interfund Transfers and Advances	\$ (4,856,082)	\$ (14,478,674)	\$ (14,533,174)	\$ (54,500)	\$ (9,677,092)	33.41%	\$ (1,833,823)	\$ (3,022,259)	164.81%
<b>Total Adjustments to Revenue</b>	<b>\$ (4,856,082)</b>	<b>\$ (14,478,674)</b>	<b>\$ (14,533,174)</b>	<b>\$ (54,500)</b>	<b>\$ (9,677,092)</b>	<b>33.41%</b>	<b>\$ (1,833,823)</b>	<b>\$ (3,022,259)</b>	<b>164.81%</b>
<b>Adjusted Grand Total</b>	<b>\$ 19,280,093</b>	<b>\$ 68,330,256</b>	<b>\$ 68,330,256</b>	<b>\$ -</b>	<b>\$ 49,050,162</b>	<b>28.22%</b>	<b>\$ 15,218,591</b>	<b>\$ 4,061,502</b>	<b>26.69%</b>



CITY OF NEW ALBANY, OHIO  
MARCH 2026 YTD EXPENDITURE ANALYSIS

General Fund

	CY Actual Spending			CY Budget			Outstanding Encumbrances	Total Expended & Encumbered	Available Balance	% of Budget Used	2025 YTD	YTD Variance	% H/(L)
	2026 Spending against 2025 Carry-Forward	2026 Spending	Total Spending	2025 Carry-Forward as Amended	2026 Budget as Amended	Total 2026 Budget							
<b>Personal Services</b>													
Salaries & Wages	\$ -	\$ 3,821,379	\$ 3,821,379	\$ 250	\$ 19,407,521	\$ 19,407,771	\$ 250	\$ 3,821,629	\$ 15,586,142	19.69%	\$ 3,468,957	\$ 352,422	10.16%
Pensions	-	577,533	577,533	-	3,024,643	3,024,643	-	577,533	2,447,110	19.09%	511,434	66,099	12.92%
Benefits	31,046	1,575,615	1,606,661	46,551	6,766,364	6,812,915	27,006	1,633,667	5,179,248	23.98%	933,689	672,972	72.08%
Professional Development	21,146	58,866	80,012	60,290	534,135	594,425	123,608	203,620	390,805	34.25%	47,620	32,392	68.02%
<b>Total Personal Services</b>	<b>\$ 52,192</b>	<b>\$ 6,033,392</b>	<b>\$ 6,085,584</b>	<b>\$ 107,091</b>	<b>\$ 29,732,663</b>	<b>\$ 29,839,754</b>	<b>\$ 150,864</b>	<b>\$ 6,236,448</b>	<b>\$ 23,603,306</b>	<b>20.90%</b>	<b>\$ 4,961,699</b>	<b>\$ 1,123,885</b>	<b>22.65%</b>
<b>Operating and Contract Services</b>													
Materials & Supplies	\$ 110,593	\$ 284,247	\$ 394,840	\$ 355,182	\$ 2,803,209	\$ 3,158,392	\$ 931,623	\$ 1,326,463	\$ 1,831,928	42.00%	\$ 202,518	\$ 192,322	94.97%
Clothing & Uniforms	8,083	22,351	30,434	30,730	119,500	150,230	104,532	134,966	15,264	89.84%	11,333	19,101	168.55%
Utilities & Communications	62	228,578	228,641	2,937	956,240	959,177	94,588	323,229	635,948	33.70%	197,956	30,685	15.50%
Maintenance & Repairs	417,156	569,439	986,595	826,613	3,194,875	4,021,488	1,678,791	2,665,386	1,356,102	66.28%	517,141	469,455	90.78%
Consulting & Contract Services	686,114	554,129	1,240,243	2,338,724	12,113,200	14,451,924	6,339,392	7,579,635	6,872,290	52.45%	1,177,987	62,256	5.28%
Payment for Services	5,067	776,507	781,574	16,689	1,686,567	1,703,256	184,704	966,278	736,978	56.73%	332,648	448,926	134.96%
Community Support, Donations, and Contributions	70,368	55,500	125,868	215,644	450,000	665,644	189,776	315,644	350,000	47.42%	12,497	113,371	907.19%
Revenue Sharing Agreements	-	-	-	-	-	-	-	-	-	0.00%	-	-	0.00%
Developer Incentive Agreements	-	-	-	-	15,000	15,000	-	-	15,000	0.00%	-	-	0.00%
Other Operating & Contract Services	51,490	218,755	270,244	68,845	985,305	1,054,149	299,457	569,701	484,448	54.04%	124,667	145,577	116.77%
<b>Total Operating and Contract Services</b>	<b>\$ 1,348,934</b>	<b>\$ 2,709,506</b>	<b>\$ 4,058,440</b>	<b>\$ 3,855,365</b>	<b>\$ 22,323,896</b>	<b>\$ 26,179,261</b>	<b>\$ 9,822,863</b>	<b>\$ 13,881,303</b>	<b>\$ 12,297,958</b>	<b>53.02%</b>	<b>\$ 2,576,747</b>	<b>\$ 1,481,693</b>	<b>57.50%</b>
<b>Transfers and Advances</b>													
Transfers	\$ -	\$ 4,856,082	\$ 4,856,082	\$ -	\$ 17,055,606	\$ 17,055,606	\$ -	\$ 4,856,082	\$ 12,199,524	28.47%	\$ 1,833,823	\$ 3,022,259	164.81%
Advances	-	-	-	-	-	-	-	-	-	0.00%	-	-	0.00%
<b>Total Transfers and Advances</b>	<b>\$ -</b>	<b>\$ 4,856,082</b>	<b>\$ 4,856,082</b>	<b>\$ -</b>	<b>\$ 17,055,606</b>	<b>\$ 17,055,606</b>	<b>\$ -</b>	<b>\$ 4,856,082</b>	<b>\$ 12,199,524</b>	<b>28.47%</b>	<b>\$ 1,833,823</b>	<b>\$ 3,022,259</b>	<b>164.81%</b>
<b>Grand Total</b>	<b>\$ 1,401,126</b>	<b>\$ 13,598,980</b>	<b>\$ 15,000,107</b>	<b>\$ 3,962,456</b>	<b>\$ 69,112,165</b>	<b>\$ 73,074,621</b>	<b>\$ 9,973,727</b>	<b>\$ 24,973,833</b>	<b>\$ 48,100,788</b>	<b>34.18%</b>	<b>\$ 9,372,270</b>	<b>\$ 5,627,836</b>	<b>60.05%</b>
<b>Adjustments</b>													
Interfund Transfers and Advances	\$ -	\$ (4,856,082)	\$ (4,856,082)	\$ -	\$ (17,055,606)	\$ (17,055,606)	\$ -	\$ (4,856,082)	\$ (12,199,524)	28.47%	\$ (1,833,823)	\$ (3,022,259)	164.81%
<b>Total Adjustments</b>	<b>\$ -</b>	<b>\$ (4,856,082)</b>	<b>\$ (4,856,082)</b>	<b>\$ -</b>	<b>\$ (17,055,606)</b>	<b>\$ (17,055,606)</b>	<b>\$ -</b>	<b>\$ (4,856,082)</b>	<b>\$ (12,199,524)</b>	<b>28.47%</b>	<b>\$ (1,833,823)</b>	<b>\$ (3,022,259)</b>	<b>164.81%</b>
<b>Adjusted Grand Total</b>	<b>\$ 1,401,126</b>	<b>\$ 8,742,898</b>	<b>\$ 10,144,025</b>	<b>\$ 3,962,456</b>	<b>\$ 52,056,559</b>	<b>\$ 56,019,015</b>	<b>\$ 9,973,727</b>	<b>\$ 20,117,751</b>	<b>\$ 35,901,264</b>	<b>35.91%</b>	<b>\$ 7,538,447</b>	<b>\$ 2,605,578</b>	<b>34.56%</b>





**Appendix B:**  
**All Funds**



**CITY OF NEW ALBANY, OHIO**  
**YEAR-TO-DATE FUND BALANCE DETAIL**  
 As of March 31, 2026

Fund	Fund Name	+		-		+/-		=	
		Beginning Balance	Receipts	Disbursements	Net Change	Ending Balance	Encumbrances	Carryover	
101	General Fund	\$ 50,824,021.94	18,230,623.12	\$ 13,810,315.15	\$ 4,420,307.97	\$ 55,244,329.91	\$ (8,815,562.27)	\$ 46,428,767.64	
102	Information Technology General	339,892.17	3,661,576.00	783,865.48	2,877,710.52	3,217,602.69	(799,777.04)	2,417,825.65	
103	Insurance Reserve General	1,603,950.00	1,020,882.44	205,634.00	815,248.44	2,419,198.44	(20,166.00)	2,399,032.44	
110	Comm Events & Grants General	253,839.73	795,688.69	152,103.92	643,584.77	897,424.50	(172,458.90)	724,965.60	
111	Senior Connections General	116,921.30	216,015.00	33,266.12	182,748.88	299,670.18	(18,780.15)	280,890.03	
112	Idea Board General	22,856.84	100,500.00	6,391.64	94,108.36	116,965.20	(43,441.72)	73,523.48	
113	Sustain Advisory Board General	52,845.58	110,890.00	8,530.35	102,359.65	155,205.23	(103,540.62)	51,664.61	
299	Severance Liability	1,568,104.47	-	-	-	1,568,104.47	-	1,568,104.47	
	<b>Total General Funds</b>	<b>54,782,432.03</b>	<b>24,136,175.25</b>	<b>15,000,106.66</b>	<b>9,136,068.59</b>	<b>63,918,500.62</b>	<b>(9,973,726.70)</b>	<b>53,944,773.92</b>	
201	Street Const. Maint & Rep	353,194.19	162,357.97	-	162,357.97	515,552.16	-	515,552.16	
202	State Highway	395,222.07	16,443.55	-	16,443.55	411,665.62	-	411,665.62	
203	Permissive Tax Fund	382,636.60	24,188.66	9,367.24	14,821.42	397,458.02	(1,232.76)	396,225.26	
210	Alcohol Education	19,653.54	75.00	-	75.00	19,728.54	-	19,728.54	
211	Drug Use Prevention	87,808.43	-	-	-	87,808.43	-	87,808.43	
212	Mandatory Drug Fine	70.00	-	-	-	70.00	-	70.00	
213	Law Enforcement & ED	6,404.90	-	-	-	6,404.90	-	6,404.90	
214	One Ohio Opioid Settlement	43,709.19	-	-	-	43,709.19	-	43,709.19	
216	K-9 Patrol	13,364.09	-	5,021.05	(5,021.05)	8,343.04	(26.54)	8,316.50	
217	Safety Town	169,674.56	37,655.04	492.97	37,162.07	206,836.63	(1,673.12)	205,163.51	
218	Dui Grant	14,700.72	-	-	-	14,700.72	-	14,700.72	
219	Law Enforcement Assistance	9,020.00	-	-	-	9,020.00	-	9,020.00	
221	Economic Development NAECA	-	-	-	-	-	-	-	
222	Economic Development NACA	2,092,304.88	-	1,184,110.14	(1,184,110.14)	908,194.74	(1,359,527.14)	(451,332.40)	
223	Oak Grove EOZ	-	969,864.12	969,864.12	-	-	-	-	
224	Central College EOZ	-	324,598.86	324,598.86	-	-	-	-	
225	Oak Grove II EOZ	-	1,818,263.76	1,818,263.76	-	-	-	-	
226	Blacklick EOZ	-	1,000,196.55	1,000,196.55	-	-	-	-	
228	Subdivision Development	1,353,006.92	940,286.63	580,362.36	359,924.27	1,712,931.19	(449,204.12)	1,263,727.07	
229	Builders Eserow	1,182,999.76	139,104.00	50,430.00	88,674.00	1,271,673.76	-	1,271,673.76	
230	Wentworth Crossing TIF	920,428.09	-	-	-	920,428.09	-	920,428.09	
231	Hawksmoor TIF	309,827.47	-	-	-	309,827.47	-	309,827.47	
232	Enclave TIF	44,707.82	-	-	-	44,707.82	-	44,707.82	
233	Saunton TIF	157,958.64	-	-	-	157,958.64	-	157,958.64	
234	Richmond Square TIF	241,676.40	-	-	-	241,676.40	-	241,676.40	
235	Tidewater TIF	265,666.75	-	-	-	265,666.75	-	265,666.75	
236	Ealy Crossing TIF	287,261.36	-	-	-	287,261.36	-	287,261.36	
237	Upper Clarenton TIF	1,412,881.56	-	-	-	1,412,881.56	-	1,412,881.56	
238	Balfour Green TIF	88,605.33	-	-	-	88,605.33	-	88,605.33	
239	Straits Farm TIF	-	-	-	-	-	-	-	
240	Oxford TIF	-	-	-	-	-	-	-	
241	Schleppi Residential TIF	-	-	-	-	-	-	-	
250	Blacklick TIF	4,914,563.03	-	(0.00)	0.00	4,914,563.03	(3,412,746.85)	1,501,816.18	
251	Blacklick II TIF	276,241.86	-	-	-	276,241.86	-	276,241.86	
252	Village Center TIF	222,853.72	-	-	-	222,853.72	-	222,853.72	
253	Research Tech District TIF	1,930,555.12	-	-	-	1,930,555.12	-	1,930,555.12	
254	Oak Grove II TIF	7,320,378.59	2,136,941.87	773,146.17	1,363,795.70	8,684,174.29	(4,293,617.77)	4,390,556.52	
255	Schleppi Commercial TIF	-	-	-	-	-	-	-	
258	Windsor TIF	8,362,350.82	-	(1,650.00)	1,650.00	8,364,000.82	(1,206,000.00)	7,158,000.82	
259	Village Center TIF II	-	-	-	-	-	-	-	
271	Local Coronavirus Relief	-	-	-	-	-	-	-	
272	Local Fiscal Recovery	24,732,630.98	-	2,411,321.19	(2,411,321.19)	22,321,309.79	(21,422,464.65)	898,845.14	
280	Hotel Excise Tax	-	56,954.34	-	56,954.34	56,954.34	-	56,954.34	
281	Healthy New Albany Facility	935,795.08	350,996.09	168,437.42	182,558.67	1,118,353.75	(619,426.18)	498,927.57	
282	Hinson Amphitheater	186,347.65	-	-	-	186,347.65	(41,000.00)	145,347.65	
290	Alcohol Indigent	12,016.25	-	-	-	12,016.25	-	12,016.25	
291	Mayors Court Computer	21,025.57	864.00	-	864.00	21,889.57	-	21,889.57	
292	Court Special Projects	31,316.00	2,309.00	-	2,309.00	33,625.00	-	33,625.00	
293	Clerk'S Office Computer	19,592.00	1,440.00	-	1,440.00	21,032.00	-	21,032.00	
	<b>Total Special Revenue Funds</b>	<b>58,818,449.94</b>	<b>7,982,539.44</b>	<b>9,293,961.83</b>	<b>(1,311,422.39)</b>	<b>57,507,027.55</b>	<b>(32,806,919.13)</b>	<b>24,700,108.42</b>	

<i>Fund</i>	<i>Fund Name</i>	<i>Beginning Balance</i>	<i>Receipts</i>	<i>Disbursements</i>	<i>Net Change</i>	<i>Ending Balance</i>	<i>Encumbrances</i>	<i>Carryover</i>
301	Debt Service	1,048,198.82	-	-	-	1,048,198.82	-	1,048,198.82
	<b>Total Debt Services Funds</b>	<b>1,048,198.82</b>	<b>-</b>	<b>-</b>	<b>-</b>	<b>1,048,198.82</b>	<b>-</b>	<b>1,048,198.82</b>
401	Capital Improvement	21,251,764.14	2,449,150.97	1,736,445.81	712,705.16	21,964,469.30	(7,708,387.72)	14,256,081.58
402	Village Center Capital Imp	7,090,910.68	280,553.37	2,082,150.95	(1,801,597.58)	5,289,313.10	(910,136.14)	4,379,176.96
403	Bond Improvement	13,152,648.88	122,672.20	2,743,105.09	(2,620,432.89)	10,532,215.99	(15,709,404.14)	(5,177,188.15)
404	Park Improvement	5,979,765.46	619,889.92	88,936.58	530,953.34	6,510,718.80	(808,834.81)	5,701,883.99
405	Water & Sanitary Improvement	9,384,189.41	554,607.08	-	554,607.08	9,938,796.49	(325,000.00)	9,613,796.49
410	Infrastructure Replacement	12,736,576.46	146,554.09	2,821.81	143,732.28	12,880,308.74	(8,078.19)	12,872,230.55
411	Leisure Trail Improvement	823,292.38	4,900.00	-	4,900.00	828,192.38	-	828,192.38
415	Capital Equipment Replace	9,204,853.12	80,146.28	326,507.04	(246,360.76)	8,958,492.36	(1,986,093.12)	6,972,399.24
417	Oak Grove II Infrastructure	4,755,538.81	1,297,103.01	47,865.00	1,249,238.01	6,004,776.82	(2,213,026.22)	3,791,750.60
422	Economic Development Cap	27,796,960.96	34,143,409.56	1,722,551.35	32,420,858.21	60,217,819.17	(16,650,728.68)	43,567,090.49
	<b>Total Capital Projects Funds</b>	<b>112,176,500.30</b>	<b>39,698,986.48</b>	<b>8,750,383.63</b>	<b>30,948,602.85</b>	<b>143,125,103.15</b>	<b>(46,319,689.02)</b>	<b>96,805,414.13</b>
901	Columbus Agency	6,280,274.80	382,556.00	-	382,556.00	6,662,830.80	-	6,662,830.80
906	Unclaimed Monies	4,988.75	-	-	-	4,988.75	-	4,988.75
908	Board Of Building Standards	7,846.65	10,320.05	6,764.67	3,555.38	11,402.03	-	11,402.03
909	Columbus Annexation	-	-	-	-	-	-	-
910	Flex Spending	49,700.27	-	(1,531.00)	1,531.00	51,231.27	-	51,231.27
999	Payroll	695,002.06	-	300.57	(300.57)	694,701.49	-	694,701.49
	<b>Total Fiduciary/Agency Funds</b>	<b>7,037,812.53</b>	<b>392,876.05</b>	<b>5,534.24</b>	<b>387,341.81</b>	<b>7,425,154.34</b>	<b>-</b>	<b>7,425,154.34</b>
	<b>Totals</b>	<b>\$ 233,863,393.62</b>	<b>\$ 72,210,577.22</b>	<b>\$ 33,049,986.36</b>	<b>\$ 39,160,590.86</b>	<b>\$ 273,023,984.48</b>	<b>\$ (89,100,334.85)</b>	<b>\$ 183,923,649.63</b>



**CITY OF NEW ALBANY, OHIO**  
**INCOME TAX TREND ANALYSIS - ALL FUNDS**  
**FISCAL YEARS 2017 - 2026**

Total City Income Taxes		Jan	Feb	Mar	Apr	May	Jun	Jul	Aug	Sep	Oct	Nov	Dec	YTD	Budget	FY Actual
<b>2026</b>	Cash Collections	\$8,744,027	\$9,334,693	\$6,031,608	\$0	\$0	\$0	\$0	\$0	\$0	\$0	\$0	\$0	\$24,110,328	\$88,471,709	NA
	3-yr Fesstd Collections	\$6,663,905	\$6,792,335	\$4,845,801	\$9,011,081	\$12,507,236	\$8,371,003	\$8,621,178	\$6,977,481	\$5,785,471	\$8,879,277	\$8,200,495	\$6,887,275	\$18,302,041	\$88,471,709	
	5-yr Fesstd Collections	\$6,617,203	\$7,310,930	\$5,187,532	\$8,749,530	\$12,232,489	\$9,228,171	\$8,122,391	\$6,938,261	\$5,716,523	\$8,419,172	\$7,948,782	\$6,030,567	\$19,115,665	\$88,471,709	
	Percent of Budget	9.88%	10.55%	6.82%	0.00%	0.00%	0.00%	0.00%	0.00%	0.00%	0.00%	0.00%	0.00%	27.25%	27.25%	NA
	Percent of FY Actual	NA	NA	NA	NA	NA	NA	NA	NA	NA	NA	NA	NA	NA	NA	NA
<b>2025</b>	Cash Collections	\$5,931,455	\$6,738,397	\$5,136,021	\$8,845,822	\$9,446,478	\$8,127,278	\$10,230,798	\$6,074,290	\$5,898,669	\$8,126,704	\$7,116,155	\$7,500,676	\$17,805,873	\$83,059,042	\$89,172,743
	Percent of Budget	7.14%	8.11%	6.18%	10.65%	11.37%	9.78%	12.32%	7.31%	7.10%	9.78%	8.57%	9.03%	21.44%	107.36%	107.36%
	Percent of FY Actual	6.65%	7.56%	5.76%	9.92%	10.59%	9.11%	11.47%	6.81%	6.61%	9.11%	7.98%	8.41%	19.97%	93.14%	100.00%
<b>2024</b>	Cash Collections	\$5,594,182	\$4,878,764	\$3,577,384	\$6,609,324	\$9,729,485	\$5,983,565	\$5,695,674	\$4,869,364	\$4,358,660	\$7,111,354	\$6,392,360	\$5,153,875	\$14,050,331	\$66,896,563	\$69,953,992
	Percent of Budget	8.36%	7.29%	5.35%	9.88%	14.54%	8.94%	8.51%	7.28%	6.52%	10.63%	9.56%	7.70%	21.00%	104.57%	104.57%
	Percent of FY Actual	8.00%	6.97%	5.11%	9.45%	13.91%	8.55%	8.14%	6.96%	6.23%	10.17%	9.14%	7.37%	20.09%	95.63%	100.00%
<b>2023</b>	Cash Collections	\$3,828,138	\$4,032,519	\$2,451,420	\$5,306,570	\$9,640,968	\$5,176,121	\$3,936,900	\$5,132,607	\$3,072,515	\$5,219,980	\$5,385,596	\$3,213,872	\$10,312,078	\$53,885,045	\$56,397,208
	Percent of Budget	7.10%	7.48%	4.55%	9.85%	17.89%	9.61%	7.31%	9.53%	5.70%	9.69%	9.99%	5.96%	19.14%	104.66%	104.66%
	Percent of FY Actual	6.79%	7.15%	4.35%	9.41%	17.09%	9.18%	6.98%	9.10%	5.45%	9.26%	9.55%	5.70%	18.28%	95.55%	100.00%
<b>2022</b>	Cash Collections	\$3,758,014	\$4,635,787	\$3,088,807	\$4,375,375	\$6,305,961	\$5,616,488	\$3,530,931	\$3,899,789	\$2,950,272	\$3,873,420	\$3,951,428	\$2,012,656	\$11,482,608	\$47,498,363	\$47,998,928
	Percent of Budget	7.91%	9.76%	6.50%	9.21%	13.28%	11.82%	7.43%	8.21%	6.21%	8.15%	8.32%	4.24%	24.17%	101.05%	101.05%
	Percent of FY Actual	7.83%	9.66%	6.44%	9.12%	13.14%	11.70%	7.36%	8.12%	6.15%	8.07%	8.23%	4.19%	23.92%	98.96%	100.00%
<b>2021</b>	Cash Collections	\$3,316,503	\$4,494,140	\$3,328,947	\$4,518,493	\$6,337,807	\$6,374,435	\$4,135,662	\$3,540,438	\$3,095,421	\$4,204,413	\$4,095,998	\$2,558,874	\$11,139,590	\$48,526,279	\$50,001,130
	Percent of Budget	6.83%	9.26%	6.86%	9.31%	13.06%	13.14%	8.52%	7.30%	6.38%	8.66%	8.44%	5.27%	22.96%	103.04%	103.04%
	Percent of FY Actual	6.63%	8.99%	6.66%	9.04%	12.68%	12.75%	8.27%	7.08%	6.19%	8.41%	8.19%	5.12%	22.28%	97.05%	100.00%
<b>2020</b>	Cash Collections	\$3,304,478	\$3,405,150	\$2,689,178	\$3,315,434	\$2,879,904	\$2,661,512	\$2,036,384	\$4,264,685	\$4,086,789	\$3,463,796	\$3,236,701	\$3,211,306	\$9,398,806	\$36,649,075	\$38,555,316
	Percent of Budget	9.02%	9.29%	7.34%	9.05%	7.86%	7.26%	5.56%	11.64%	11.15%	9.45%	8.83%	8.76%	25.65%	105.20%	105.20%
	Percent of FY Actual	8.57%	8.83%	6.97%	8.60%	7.47%	6.90%	5.28%	11.06%	10.60%	8.98%	8.39%	8.33%	24.38%	95.06%	100.00%
<b>2019</b>	Cash Collections	\$3,300,714	\$3,102,752	\$2,629,286	\$3,630,488	\$3,878,041	\$4,762,987	\$3,115,563	\$3,193,585	\$2,505,326	\$3,618,638	\$2,849,681	\$3,151,479	\$9,032,752	\$33,262,791	\$39,738,539
	Percent of Budget	9.92%	9.33%	7.90%	10.91%	11.66%	14.32%	9.37%	9.60%	7.53%	10.88%	8.57%	9.47%	27.16%	119.47%	119.47%
	Percent of FY Actual	8.31%	7.81%	6.62%	9.14%	9.76%	11.99%	7.84%	8.04%	6.30%	9.11%	7.17%	7.93%	22.73%	83.70%	100.00%
<b>2018</b>	Cash Collections	\$3,388,137	\$2,870,293	\$2,017,181	\$2,904,534	\$4,072,890	\$3,636,455	\$3,246,535	\$2,334,572	\$2,424,127	\$2,929,163	\$3,273,884	\$2,587,809	\$8,275,611	\$33,262,791	\$35,685,581
	Percent of Budget	10.19%	8.63%	6.06%	8.73%	12.24%	10.93%	9.76%	7.02%	7.29%	8.81%	9.84%	7.78%	24.88%	107.28%	107.28%
	Percent of FY Actual	9.49%	8.04%	5.65%	8.14%	11.41%	10.19%	9.10%	6.54%	6.79%	8.21%	9.17%	7.25%	23.19%	93.21%	100.00%
<b>2017</b>	Cash Collections	\$2,815,928	\$2,480,920	\$1,814,198	\$2,863,574	\$2,956,097	\$3,518,274	\$2,262,618	\$2,686,136	\$1,741,420	\$3,107,181	\$2,471,415	\$1,959,265	\$7,111,047	\$29,432,567	\$30,677,029
	Percent of Budget	9.57%	8.43%	6.16%	9.73%	10.04%	11.95%	7.69%	9.13%	5.92%	10.56%	8.40%	6.66%	24.16%	104.23%	104.23%
	Percent of FY Actual	9.18%	8.09%	5.91%	9.33%	9.64%	11.47%	7.38%	8.76%	5.68%	10.13%	8.06%	6.39%	23.18%	95.94%	100.00%



**CITY OF NEW ALBANY, OHIO**  
**INCOME TAX TREND ANALYSIS - ALL FUNDS**  
**FISCAL YEARS 2017 - 2026**

Total City Income Taxes	Jan	Feb	Mar	Apr	May	Jun	Jul	Aug	Sep	Oct	Nov	Dec	YTD	Budget	FY Actual	
<i>Most-recent 3-year basis</i>																
Avg Pct of Budget	7.53%	7.68%	5.48%	10.19%	14.14%	9.46%	9.74%	7.89%	6.54%	10.04%	9.27%	7.78%	20.69%	100.00%	105.73%	
Avg Pct of FY Actual	7.12%	7.26%	5.18%	9.63%	13.37%	8.95%	9.22%	7.46%	6.18%	9.49%	8.77%	7.36%	19.57%	94.58%	100.00%	
	Revenue projection as a % of budget				\$116,548,857				Revenue projection as a % of YTD Actual				\$123,228,949			
	Opportunity/(risk) to Revenue Projections				\$28,077,148				Opportunity/(risk) to Revenue Projections				\$34,757,240			
<i>5-Year Basis</i>																
Avg Pct of Budget	7.48%	8.26%	5.86%	9.89%	13.83%	10.43%	9.18%	7.84%	6.46%	9.52%	8.98%	6.82%	21.61%	100.00%	104.55%	
Avg Pct of FY Actual	7.53%	8.16%	5.76%	9.18%	13.27%	9.82%	7.35%	8.26%	6.68%	9.08%	8.77%	6.14%	21.45%	95.64%	100.00%	
	Revenue projection as a % of budget				\$111,588,164				Revenue projection as a % of YTD Actual				\$112,422,494			
	Opportunity/(risk) to Revenue Projections				\$23,116,455				Opportunity/(risk) to Revenue Projections				\$23,950,785			

**New Albany EOZ Revenue Sharing**

<b>2025</b>	<b>Jan</b>	<b>Feb</b>	<b>Mar</b>	<b>Apr</b>	<b>May</b>	<b>June</b>	<b>July</b>	<b>Aug</b>	<b>Sept</b>	<b>Oct</b>	<b>Nov</b>	<b>Dec</b>	<b>Total</b>	<b>YTD</b>
<b>Blacklick</b>														
Withholding	165,541.95	153,020.06	196,281.33	611,619.14	579,220.39	146,154.09	156,641.53	158,562.63	218,543.81	173,464.92	123,571.81	214,285.31	2,896,906.97	514,843.34
Net Profit	0.00	327,500.00	0.00	0.00	0.00	0.00	925,000.00	300,000.00	0.00	0.00	400,000.00	0.00	1,952,500.00	327,500.00
<b>Total</b>	<b>165,541.95</b>	<b>480,520.06</b>	<b>196,281.33</b>	<b>611,619.14</b>	<b>579,220.39</b>	<b>146,154.09</b>	<b>1,081,641.53</b>	<b>458,562.63</b>	<b>218,543.81</b>	<b>173,464.92</b>	<b>523,571.81</b>	<b>214,285.31</b>	<b>4,849,406.97</b>	<b>842,343.34</b>
<b>Central College</b>														
Withholding	39,352.27	31,252.71	42,002.74	43,478.93	35,780.07	29,263.17	55,638.54	26,212.07	34,170.53	28,793.75	26,549.67	40,286.02	432,780.47	112,607.72
Net Profit	193,736.20	116,662.06	3,027.65	422,049.10	27,722.55	21,386.59	78,873.96	127,069.54	2,520.39	108,443.49	0.00	195.43	1,101,686.96	313,425.91
<b>Total</b>	<b>233,088.47</b>	<b>147,914.77</b>	<b>45,030.39</b>	<b>465,528.03</b>	<b>63,502.62</b>	<b>50,649.76</b>	<b>134,512.50</b>	<b>153,281.61</b>	<b>36,690.92</b>	<b>137,237.24</b>	<b>26,549.67</b>	<b>40,481.45</b>	<b>1,534,467.43</b>	<b>426,033.63</b>
<b>Oak Grove I</b>														
Withholding	226,223.20	178,976.85	271,467.50	219,704.81	173,210.06	165,583.43	194,441.25	158,165.29	189,286.23	154,740.27	177,189.25	199,494.31	2,308,482.45	676,667.55
Net Profit	(103,129.45)	190,518.78	3,812.72	9,558.35	158,783.72	371,993.54	295,236.39	11,842.09	16,196.26	208,278.43	11,695.43	122,441.50	1,297,227.76	91,202.05
<b>Total</b>	<b>123,093.75</b>	<b>369,495.63</b>	<b>275,280.22</b>	<b>229,263.16</b>	<b>331,993.78</b>	<b>537,576.97</b>	<b>489,677.64</b>	<b>170,007.38</b>	<b>205,482.49</b>	<b>363,018.70</b>	<b>188,884.68</b>	<b>321,935.81</b>	<b>3,605,710.21</b>	<b>767,869.60</b>
<b>Oak Grove II</b>														
Withholding	292,804.33	281,398.26	259,093.52	462,299.89	305,754.74	261,640.51	327,220.16	312,505.91	368,008.38	354,634.33	330,786.08	413,238.88	3,969,384.99	833,296.11
Net Profit	167,290.20	18,830.03	137,980.35	0.00	38,861.60	37,651.20	199,057.56	27,283.85	8,279.33	93,508.31	2,799.23	6,270.41	737,812.07	324,100.58
<b>Total</b>	<b>460,094.53</b>	<b>300,228.29</b>	<b>397,073.87</b>	<b>462,299.89</b>	<b>344,616.34</b>	<b>299,291.71</b>	<b>526,277.72</b>	<b>339,789.76</b>	<b>376,287.71</b>	<b>448,142.64</b>	<b>333,585.31</b>	<b>419,509.29</b>	<b>4,707,197.06</b>	<b>1,157,396.69</b>
<b>Total EOZs</b>														
Withholding	723,921.75	644,647.88	768,845.09	1,337,102.77	1,093,965.26	602,641.20	733,941.48	655,445.90	810,008.95	711,633.27	658,096.81	867,304.52	9,607,554.88	2,137,414.72
Net Profit	257,896.95	653,510.87	144,820.72	431,607.45	225,367.87	431,031.33	1,498,167.91	466,195.48	26,995.98	410,230.23	414,494.66	128,907.34	5,089,226.79	1,056,228.54
<b>Total</b>	<b>981,818.70</b>	<b>1,298,158.75</b>	<b>913,665.81</b>	<b>1,768,710.22</b>	<b>1,319,333.13</b>	<b>1,033,672.53</b>	<b>2,232,109.39</b>	<b>1,121,641.38</b>	<b>837,004.93</b>	<b>1,121,863.50</b>	<b>1,072,591.47</b>	<b>996,211.86</b>	<b>14,696,781.67</b>	<b>3,193,643.26</b>
<b>2026</b>														
<b>2026</b>	<b>Jan</b>	<b>Feb</b>	<b>Mar</b>	<b>Apr</b>	<b>May</b>	<b>June</b>	<b>July</b>	<b>Aug</b>	<b>Sept</b>	<b>Oct</b>	<b>Nov</b>	<b>Dec</b>	<b>Total</b>	<b>YTD</b>
<b>Blacklick</b>														
Withholding	180,913.39	173,351.99	220,931.18	0.00	0.00	0.00	0.00	0.00	0.00	0.00	0.00	0.00	575,196.56	575,196.56
Net Profit	0.00	425,000.00	0.00	0.00	0.00	0.00	0.00	0.00	0.00	0.00	0.00	0.00	425,000.00	425,000.00
<b>Total</b>	<b>180,913.39</b>	<b>598,351.99</b>	<b>220,931.18</b>	<b>0.00</b>	<b>0.00</b>	<b>0.00</b>	<b>0.00</b>	<b>0.00</b>	<b>0.00</b>	<b>0.00</b>	<b>0.00</b>	<b>0.00</b>	<b>1,000,196.56</b>	<b>1,000,196.56</b>
<b>Central College</b>														
Withholding	32,491.28	44,923.90	29,229.72	0.00	0.00	0.00	0.00	0.00	0.00	0.00	0.00	0.00	106,644.90	106,644.90
Net Profit	48,784.47	44,568.43	0.00	0.00	0.00	0.00	0.00	0.00	0.00	0.00	0.00	0.00	93,352.90	93,352.90
<b>Total</b>	<b>81,275.75</b>	<b>89,492.33</b>	<b>29,229.72</b>	<b>0.00</b>	<b>0.00</b>	<b>0.00</b>	<b>0.00</b>	<b>0.00</b>	<b>0.00</b>	<b>0.00</b>	<b>0.00</b>	<b>0.00</b>	<b>199,997.80</b>	<b>199,997.80</b>
<b>Oak Grove I</b>														
Withholding	251,387.12	227,338.62	379,990.96	0.00	0.00	0.00	0.00	0.00	0.00	0.00	0.00	0.00	858,716.70	858,716.70
Net Profit	307,745.19	13,009.33	889.35	0.00	0.00	0.00	0.00	0.00	0.00	0.00	0.00	0.00	321,643.87	321,643.87
<b>Total</b>	<b>559,132.31</b>	<b>240,347.95</b>	<b>380,880.31</b>	<b>0.00</b>	<b>0.00</b>	<b>0.00</b>	<b>0.00</b>	<b>0.00</b>	<b>0.00</b>	<b>0.00</b>	<b>0.00</b>	<b>0.00</b>	<b>1,180,360.57</b>	<b>1,180,360.57</b>
<b>Oak Grove II</b>														
Withholding	345,230.57	374,769.37	379,842.51	0.00	0.00	0.00	0.00	0.00	0.00	0.00	0.00	0.00	1,099,842.45	1,099,842.45
Net Profit	51,325.64	10,758.16	46,390.39	0.00	0.00	0.00	0.00	0.00	0.00	0.00	0.00	0.00	108,474.19	108,474.19
<b>Total</b>	<b>396,556.21</b>	<b>385,527.53</b>	<b>426,232.90</b>	<b>0.00</b>	<b>0.00</b>	<b>0.00</b>	<b>0.00</b>	<b>0.00</b>	<b>0.00</b>	<b>0.00</b>	<b>0.00</b>	<b>0.00</b>	<b>1,208,316.64</b>	<b>1,208,316.64</b>
<b>Total EOZs</b>														
Withholding	810,022.36	820,383.88	1,009,994.37	0.00	0.00	0.00	0.00	0.00	0.00	0.00	0.00	0.00	2,640,400.61	2,640,400.61
Net Profit	407,855.30	493,335.92	47,279.74	0.00	0.00	0.00	0.00	0.00	0.00	0.00	0.00	0.00	948,470.96	948,470.96
<b>Total</b>	<b>1,217,877.66</b>	<b>1,313,719.80</b>	<b>1,057,274.11</b>	<b>0.00</b>	<b>0.00</b>	<b>0.00</b>	<b>0.00</b>	<b>0.00</b>	<b>0.00</b>	<b>0.00</b>	<b>0.00</b>	<b>0.00</b>	<b>3,588,871.57</b>	<b>3,588,871.57</b>









CITY OF NEW ALBANY, OHIO  
MARCH 2026 YTD REVENUE ANALYSIS

All Funds

	2026 YTD	2026 Adopted Budget	2026 Amended Budget	Change in 2026 Budget	Uncollected YTD Balance	% Collected	2025 YTD	YTD Variance	% H/(L)
<b>Taxes</b>									
Property Taxes	\$ 288,735	\$ 2,730,000	\$ 2,730,000	\$ -	\$ 2,441,265	10.58%	\$ 1,188,268	\$ (899,533)	(75.70%)
Income Taxes	24,110,328	88,471,709	88,471,709	-	64,361,380	27.25%	17,805,873	6,304,455	35.41%
Hotel Taxes	227,817	1,000,000	1,000,000	-	772,183	22.78%	157,091	70,726	45.02%
<b>Total Taxes</b>	<b>\$ 24,626,881</b>	<b>\$ 92,201,709</b>	<b>\$ 92,201,709</b>	<b>\$ -</b>	<b>\$ 67,574,828</b>	<b>26.71%</b>	<b>\$ 19,151,233</b>	<b>\$ 5,475,648</b>	<b>28.59%</b>
<b>Intergovernmental</b>									
State Shared Taxes & Permits	\$ 38,240	\$ 995,750	\$ 995,750	\$ -	\$ 957,510	3.84%	\$ 35,414	\$ 2,826	7.98%
Street Maint Taxes	191,672	791,000	791,000	-	599,328	24.23%	195,659	(3,987)	(2.04%)
Grants & Other Intergovernmental	33,557,520	42,927,526	42,927,526	-	9,370,006	78.17%	3,093,748	30,463,772	984.69%
<b>Total Intergovernmental</b>	<b>\$ 33,787,432</b>	<b>\$ 44,714,276</b>	<b>\$ 44,714,276</b>	<b>\$ -</b>	<b>\$ 10,926,844</b>	<b>75.56%</b>	<b>\$ 3,324,821</b>	<b>\$ 30,462,611</b>	<b>916.22%</b>
<b>Charges for Service</b>									
Administrative Service Charges	\$ 20,676	\$ 98,000	\$ 98,000	\$ -	\$ 77,324	21.10%	\$ 47,864	\$ (27,187)	(56.80%)
Water & Sewer Fees	479,389	1,400,000	1,400,000	-	920,611	34.24%	163,146	316,242	193.84%
Building Department Fees	1,039,838	2,275,000	2,275,000	-	1,235,162	45.71%	839,263	200,575	23.90%
Right of Way Fees	10,350	30,000	30,000	-	19,650	34.50%	25,100	(14,750)	(58.76%)
Police Fees	41,616	63,000	63,000	-	21,384	66.06%	43,911	(2,295)	(5.23%)
Other Fees & Charges	1,031,864	4,435,699	4,435,699	-	3,403,835	23.26%	8,503	1,023,361	12,034.86%
<b>Total Charges for Service</b>	<b>\$ 2,623,733</b>	<b>\$ 8,301,699</b>	<b>\$ 8,301,699</b>	<b>\$ -</b>	<b>\$ 5,677,966</b>	<b>31.60%</b>	<b>\$ 1,127,787</b>	<b>\$ 1,495,946</b>	<b>132.64%</b>
<b>Fines, Licenses &amp; Permits</b>									
Fines & Forfeitures	\$ 35,918	\$ 155,500	\$ 155,500	\$ -	\$ 119,582	23.10%	\$ 34,505	\$ 1,413	4.10%
Building, Licenses & Permits	571,319	2,345,000	2,345,000	-	1,773,681	24.36%	612,673	(41,354)	(6.75%)
Other Licenses & Permits	20,926	130,000	130,000	-	109,074	16.10%	25,062	(4,137)	(16.51%)
<b>Total Fines, Licenses &amp; Permits</b>	<b>\$ 628,163</b>	<b>\$ 2,630,500</b>	<b>\$ 2,630,500</b>	<b>\$ -</b>	<b>\$ 2,002,337</b>	<b>23.88%</b>	<b>\$ 672,240</b>	<b>\$ (44,078)</b>	<b>(6.56%)</b>
<b>Other Sources</b>									
Sale of Assets	\$ 280,825	\$ 25,000	\$ 25,000	\$ -	\$ (255,825)	1123.30%	\$ 2,931	\$ 277,894	9,481.20%
Payment in Lieu of Taxes (PILOT)	2,136,942	16,157,000	16,157,000	-	14,020,058	13.23%	7,564,795	(5,427,853)	(71.75%)
Funds from NAECA/NACA	-	41,694,578	41,694,578	-	41,694,578	0.00%	-	-	0.00%
Investment Income	2,420,307	7,770,000	7,770,000	-	5,349,693	31.15%	2,077,336	342,971	16.51%
Rental & Lease Income	231,334	670,000	670,000	-	438,666	34.53%	246,204	(14,869)	(6.04%)
Reimbursements	217,901	1,690,000	1,690,000	-	1,472,099	12.89%	251,409	(33,509)	(13.33%)
Other Income	8,102	72,000	72,000	-	63,898	11.25%	1,612,005	(1,603,903)	(99.50%)
Proceeds of Bonds	-	58,000,000	58,000,000	-	58,000,000	0.00%	-	-	0.00%
Proceeds of Notes/Loans	-	-	-	-	-	0.00%	-	-	0.00%
<b>Total Other Sources</b>	<b>\$ 5,295,411</b>	<b>\$ 126,078,578</b>	<b>\$ 126,078,578</b>	<b>\$ -</b>	<b>\$ 120,783,167</b>	<b>4.20%</b>	<b>\$ 11,754,680</b>	<b>\$ (6,459,269)</b>	<b>(54.95%)</b>
<b>Transfers and Advances</b>									
Transfers and Advances	\$ 4,856,082	\$ 46,565,502	\$ 46,620,002	\$ 54,500	\$ 41,763,920	10.42%	\$ 1,833,823	\$ 3,022,259	164.81%
<b>Total Transfers and Advances</b>	<b>\$ 4,856,082</b>	<b>\$ 46,565,502</b>	<b>\$ 46,620,002</b>	<b>\$ 54,500</b>	<b>\$ 41,763,920</b>	<b>10.42%</b>	<b>\$ 1,833,823</b>	<b>\$ 3,022,259</b>	<b>164.81%</b>
<b>Grand Total</b>	<b>\$ 71,817,701</b>	<b>\$ 320,492,264</b>	<b>\$ 320,546,764</b>	<b>\$ 54,500</b>	<b>\$ 248,729,063</b>	<b>22.40%</b>	<b>\$ 37,864,584</b>	<b>\$ 33,953,117</b>	<b>89.67%</b>
<b>Adjustments</b>									
Interfund Transfers and Advances	\$ (4,856,082)	\$ (46,565,502)	\$ (46,620,002)	\$ (54,500)	\$ (41,763,920)	10.42%	\$ (1,833,823)	\$ (3,022,259)	164.81%
<b>Total Adjustments to Revenue</b>	<b>\$ (4,856,082)</b>	<b>\$ (46,565,502)</b>	<b>\$ (46,620,002)</b>	<b>\$ (54,500)</b>	<b>\$ (41,763,920)</b>	<b>10.42%</b>	<b>\$ (1,833,823)</b>	<b>\$ (3,022,259)</b>	<b>164.81%</b>
<b>Adjusted Grand Total</b>	<b>\$ 66,961,619</b>	<b>\$ 273,926,762</b>	<b>\$ 273,926,762</b>	<b>\$ -</b>	<b>\$ 206,965,143</b>	<b>24.45%</b>	<b>\$ 36,030,760</b>	<b>\$ 30,930,859</b>	<b>85.85%</b>



CITY OF NEW ALBANY, OHIO  
MARCH 2026 YTD EXPENDITURE ANALYSIS

All Funds

	CY Actual Spending			CY Budget			Outstanding Encumbrances	Total Expended & Encumbered	Available Balance	% of Budget Used	2025 YTD	YTD Variance	% H/(L)
	2026 Spending against 2025 Carry-Forward	2026 Spending	Total Spending	2025 Carry-Forward as Amended	2026 Budget as Amended	Total 2026 Budget							
<b>Personal Services</b>													
Salaries & Wages	\$ -	\$ 3,824,886	\$ 3,824,886	\$ 250	\$ 19,447,021	\$ 19,447,271	\$ 250	\$ 3,825,136	\$ 15,622,135	19.67%	\$ 3,474,334	\$ 350,552	10.09%
Pensions	-	578,217	578,217	-	3,027,443	3,027,443	-	578,217	2,449,226	19.10%	512,060	66,157	12.92%
Benefits	31,046	1,575,665	1,606,712	46,551	6,766,564	6,813,115	27,006	1,633,717	5,179,398	23.98%	933,735	672,977	72.07%
Professional Development	21,146	58,866	80,012	60,290	535,335	595,625	123,608	203,620	392,005	34.19%	47,620	32,392	68.02%
<b>Total Personal Services</b>	<b>\$ 52,192</b>	<b>\$ 6,037,634</b>	<b>\$ 6,089,826</b>	<b>\$ 107,091</b>	<b>\$ 29,776,363</b>	<b>\$ 29,883,454</b>	<b>\$ 150,864</b>	<b>\$ 6,240,690</b>	<b>\$ 23,642,764</b>	<b>20.88%</b>	<b>\$ 4,967,748</b>	<b>\$ 1,122,078</b>	<b>22.59%</b>
<b>Operating and Contract Services</b>													
Materials & Supplies	\$ 120,129	\$ 285,230	\$ 405,359	\$ 367,288	\$ 3,032,409	\$ 3,399,697	\$ 934,193	\$ 1,339,551	\$ 2,060,146	39.40%	\$ 262,174	\$ 143,185	54.61%
Clothing & Uniforms	8,083	22,351	30,434	30,730	119,500	150,230	104,532	134,966	15,264	89.84%	11,333	19,101	168.55%
Utilities & Communications	62	313,878	313,941	2,937	1,203,240	1,206,177	94,588	408,529	797,648	33.87%	260,023	53,918	20.74%
Maintenance & Repairs	418,022	569,687	987,709	832,822	3,353,175	4,185,996	1,688,949	2,676,658	1,509,339	63.94%	605,567	382,142	63.10%
Consulting & Contract Services	951,764	1,142,421	2,094,185	3,286,609	16,311,200	19,597,810	8,841,430	10,935,615	8,662,195	55.80%	1,748,261	345,924	19.79%
Payment for Services	5,067	970,469	975,536	16,689	2,848,031	2,864,720	187,801	1,163,337	1,701,384	40.61%	697,869	277,667	39.79%
Community Support, Donations, and Contributions	70,368	1,055,500	1,125,868	215,644	1,700,000	1,915,644	189,776	1,315,644	600,000	68.68%	51,770	1,074,098	2,074.76%
Revenue Sharing Agreements	-	4,030,488	4,030,488	-	26,041,829	26,041,829	-	4,030,488	22,011,341	15.48%	4,549,004	(518,516)	(11.40%)
Developer Incentive Agreements	-	-	-	-	3,315,000	3,315,000	-	-	3,315,000	0.00%	-	-	0.00%
Other Operating & Contract Services	51,490	269,185	320,674	1,268,845	5,908,305	7,177,149	1,499,457	1,820,131	5,357,018	25.36%	1,656,293	(1,335,619)	(80.64%)
<b>Total Operating and Contract Services</b>	<b>\$ 1,624,985</b>	<b>\$ 8,659,209</b>	<b>\$ 10,284,194</b>	<b>\$ 6,021,564</b>	<b>\$ 63,832,689</b>	<b>\$ 69,854,253</b>	<b>\$ 13,540,725</b>	<b>\$ 23,824,919</b>	<b>\$ 46,029,334</b>	<b>34.11%</b>	<b>\$ 9,842,293</b>	<b>\$ 441,901</b>	<b>4.49%</b>
<b>Capital</b>													
Land & Buildings	\$ 1,159,869	\$ 192,434	\$ 1,352,303	\$ 4,199,614	\$ 67,850,000	\$ 72,049,614	\$ 8,549,648	\$ 9,901,951	\$ 62,147,663	13.74%	\$ 935,211	\$ 417,092	44.60%
Machinery & Equipment	339,397	-	339,397	2,285,739	2,662,700	4,948,439	1,996,737	2,336,135	2,612,305	47.21%	383,244	(43,846)	(11.44%)
Infrastructure	9,963,790	158,860	10,122,650	70,278,405	95,139,234	165,417,639	64,862,361	74,985,010	90,432,628	45.33%	7,556,196	2,566,454	33.96%
<b>Total Capital</b>	<b>\$ 11,463,056</b>	<b>\$ 351,294</b>	<b>\$ 11,814,350</b>	<b>\$ 76,763,758</b>	<b>\$ 165,651,934</b>	<b>\$ 242,415,692</b>	<b>\$ 75,408,746</b>	<b>\$ 87,223,096</b>	<b>\$ 155,192,596</b>	<b>35.98%</b>	<b>\$ 8,874,651</b>	<b>\$ 2,939,699</b>	<b>33.12%</b>
<b>Debt Services</b>													
Principal Repayment	\$ -	\$ -	\$ -	\$ -	\$ 19,202,139	\$ 19,202,139	\$ -	\$ -	\$ 19,202,139	0.00%	\$ -	\$ -	0.00%
Interest Expense	-	-	-	-	2,103,748	2,103,748	-	-	2,103,748	0.00%	-	-	0.00%
Other Debt Service	-	-	-	-	300,000	300,000	-	-	300,000	0.00%	-	-	0.00%
<b>Total Debt Services</b>	<b>\$ -</b>	<b>\$ -</b>	<b>\$ -</b>	<b>\$ -</b>	<b>\$ 21,605,887</b>	<b>\$ 21,605,887</b>	<b>\$ -</b>	<b>\$ -</b>	<b>\$ 21,605,887</b>	<b>0.00%</b>	<b>\$ -</b>	<b>\$ -</b>	<b>0.00%</b>
<b>Transfers and Advances</b>													
Transfers	\$ -	\$ 4,856,082	\$ 4,856,082	\$ -	\$ 37,805,305	\$ 37,805,305	\$ -	\$ 4,856,082	\$ 32,949,223	12.84%	\$ 1,833,823	\$ 3,022,259	164.81%
Advances	-	-	-	-	8,814,697	8,814,697	-	-	8,814,697	0.00%	-	-	0.00%
<b>Total Transfers and Advances</b>	<b>\$ -</b>	<b>\$ 4,856,082</b>	<b>\$ 4,856,082</b>	<b>\$ -</b>	<b>\$ 46,620,002</b>	<b>\$ 46,620,002</b>	<b>\$ -</b>	<b>\$ 4,856,082</b>	<b>\$ 41,763,920</b>	<b>10.42%</b>	<b>\$ 1,833,823</b>	<b>\$ 3,022,259</b>	<b>164.81%</b>
<b>Grand Total</b>	<b>\$ 13,140,233</b>	<b>\$ 19,904,219</b>	<b>\$ 33,044,452</b>	<b>\$ 82,892,413</b>	<b>\$ 327,486,875</b>	<b>\$ 410,379,288</b>	<b>\$ 89,100,335</b>	<b>\$ 122,144,787</b>	<b>\$ 288,234,501</b>	<b>29.76%</b>	<b>\$ 25,518,516</b>	<b>\$ 7,525,936</b>	<b>29.49%</b>
<b>Adjustments</b>													
Interfund Transfers and Advances	\$ -	\$ (4,856,082)	\$ (4,856,082)	\$ -	\$ (46,620,002)	\$ (46,620,002)	\$ -	\$ (4,856,082)	\$ (41,763,920)	10.42%	\$ (1,833,823)	\$ (3,022,259)	164.81%
<b>Total Adjustments</b>	<b>\$ -</b>	<b>\$ (4,856,082)</b>	<b>\$ (4,856,082)</b>	<b>\$ -</b>	<b>\$ (46,620,002)</b>	<b>\$ (46,620,002)</b>	<b>\$ -</b>	<b>\$ (4,856,082)</b>	<b>\$ (41,763,920)</b>	<b>10.42%</b>	<b>\$ (1,833,823)</b>	<b>\$ (3,022,259)</b>	<b>164.81%</b>
<b>Adjusted Grand Total</b>	<b>\$ 13,140,233</b>	<b>\$ 15,048,137</b>	<b>\$ 28,188,370</b>	<b>\$ 82,892,413</b>	<b>\$ 280,866,873</b>	<b>\$ 363,759,286</b>	<b>\$ 89,100,335</b>	<b>\$ 117,288,705</b>	<b>\$ 246,470,581</b>	<b>32.24%</b>	<b>\$ 23,684,693</b>	<b>\$ 4,503,677</b>	<b>19.02%</b>





**Appendix C:**  
**Investments**





Month of: March-26

INTEREST AND INVESTMENT INCOME

	Previous Month Balance		Principal			Interest/(Fees)		Ending Balance
	Purchased	Matured/Sold	Deposited/Withdrawn	Bank Account	Investment Account			
Municipal Securities - Taxable Bonds	\$ 13,899,571.25	1,300,000.00					\$ 15,199,571.25	
United States Treas NTS/Bills	\$ 39,408,017.88	3,770,636.66	(1,373,662.11)				\$ 41,804,992.43	
Federal Agency Notes	\$ 47,763,302.51	4,192,037.30	(2,880,066.00)				\$ 49,075,273.81	
Federal Agency - Discount Note	\$ 0.00						\$ 0.00	
Commercial Paper	\$ 3,223,944.25						\$ 3,223,944.25	
Certificate's of Deposit	\$ 15,779,812.35		(1,469,444.10)				\$ 14,310,368.25	
<b>Subtotal</b>	<b>\$ 120,074,648.25</b>	<b>9,262,673.96</b>	<b>(5,723,172.21)</b>	<b>-</b>			<b>\$ 123,614,149.99</b>	
<b>Infrastructure Replacement Funds</b>								
Municipal Securities - Taxable Bonds	\$ 924,198.00						\$ 924,198.00	
United States Treas NTS/Bills	\$ 1,774,613.90						\$ 1,774,613.90	
Federal Agency - Discount Note	\$ -						\$ -	
Federal Agency Notes	\$ 2,297,393.66						\$ 2,297,393.66	
Commercial Paper	\$ 1,751,051.51						\$ 1,751,051.51	
Certificate's of Deposit	\$ 5,763,723.30	363,760.50					\$ 6,127,483.80	
<b>Subtotal</b>	<b>\$ 12,510,980.37</b>	<b>363,760.50</b>	<b>-</b>	<b>-</b>			<b>\$ 12,874,740.87</b>	
<b>State Infrastructure Funds</b>								
Municipal Securities - Taxable Bonds	\$ -						\$ -	
United States Treas NTS/Bills	\$ 12,241,207.94						\$ 12,241,207.94	
Federal Agency Notes	\$ 3,465,004.00		(1,976,686.00)				\$ 1,488,318.00	
Commercial Paper	\$ 7,012,353.60	972,325.00					\$ 7,984,678.60	
Certificate's of Deposit	\$ -						\$ -	
<b>Subtotal</b>	<b>\$ 22,718,565.54</b>	<b>972,325.00</b>	<b>(1,976,686.00)</b>	<b>-</b>			<b>\$ 21,714,204.54</b>	
<b>Money Market Fund (Trust Dept) - General</b>								
Money Market Fund (Trust Dept) - General	\$ 3,106,653.58	5,748,137.64	(9,262,673.96)		(8,538.29)	448,459.39	\$ 32,038.36	
Money Market Fund (Trust Dept) - Infrastructure	\$ 343,069.56		(363,760.50)		(879.62)	29,122.33	\$ 7,551.77	
Money Market Fund (Trust Dept) - State Infrac.	\$ 344,380.50	2,000,000.00	(972,325.00)		(1,569.05)	18,395.23	\$ 1,388,881.68	
<b>Total Money Market Funds</b>	<b>\$ 3,794,103.64</b>	<b>7,748,137.64</b>	<b>(10,598,759.46)</b>	<b>-</b>	<b>(10,986.96)</b>	<b>\$ 495,976.95</b>	<b>\$ 1,428,471.81</b>	
<b>Star Ohio</b>								
Star Ohio	\$ 42,722,220.62			5,983,590.14	147,804.86		\$ 48,853,615.62	
Star Ohio (Bond - Rose Run Issue 2018)	\$ 13,162,027.51			(2,354,950.43)	37,193.79		\$ 10,844,270.87	
Star Ohio (State Infrastructure)	\$ 14,764,385.26			31,928,806.56	112,109.04		\$ 46,805,300.86	

<b>Totals</b>	<b>\$ 61,280,709.52</b>	<b>\$ 15,010,811.60</b>	<b>\$ (20,709,018.38)</b>	<b>\$ 37,912,396.70</b>	<b>\$ 248,926.94</b>	<b>\$ 495,976.95</b>	<b>\$ 266,134,754.56</b>
						FSA - Park National	51,231.27
						Builders Escrow - Park	1,271,673.76
						Insurance Cash w/ Fiscal	1,020,882.44
						Huntington - P Card	3,336.00
						E-Recording	1,000.00
						Payroll - Park	694,701.49
						Operating - Park	3,175,584.92
						West Erie Escrow	670,820.04
						<b>Total Cash &amp; Investments</b>	<b>\$ 273,023,984.48</b>

General Investments



City of New Albany  
US Bank Custodian Acct Ending x82429  
Attn: Joseph Stefanov

Portfolio Overview

3/1/2026 - 3/31/2026

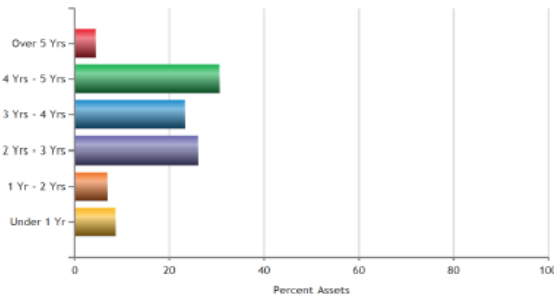
Monthly Activity Summary

	Since 3/1/2026
Beginning Book Value	123,181,301.83
Contributions	0.00
Withdrawals	0.00
Prior Month Management Fees	-8,538.29
Prior Month Custody Fees	-616.70
Realized Gains/Losses	24,965.42
Gross Interest Earnings	449,076.09
Ending Book Value	123,646,188.35

Portfolio Allocation as of 3/31/2026



Distribution by Maturity



Allocation Information

Security Type	Market Value	% Assets	Yield	WAM
U.S. GOVERNMENT AGENCY NOTES	49,654,514.06	39.6	4.01	3.19
MUNICIPAL BONDS	15,491,312.69	12.4	4.34	3.55
U.S. TREASURY NOTES	42,403,874.46	33.8	4.05	3.23
CERTIFICATES OF DEPOSIT	14,463,794.19	11.5	4.38	1.88
COMMERCIAL PAPERS	3,272,854.99	2.6	3.94	0.21
MONEY MARKET FUNDS	32,038.36	0.0	3.55	0.00
<b>Total</b>	<b>125,318,388.75</b>	<b>100.0</b>	<b>4.11</b>	<b>3.02</b>

Infrastructure Replacement Funds



City of New Albany - Infrastructure Replacement Fund  
US Bank Custodian Acct Ending x02337  
Attn: Joseph Stefanov

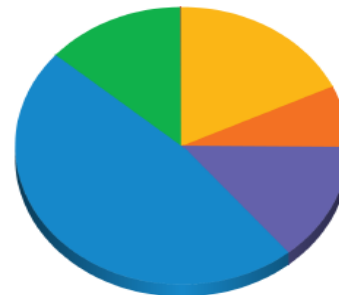
Portfolio Overview

3/1/2026 - 3/31/2026

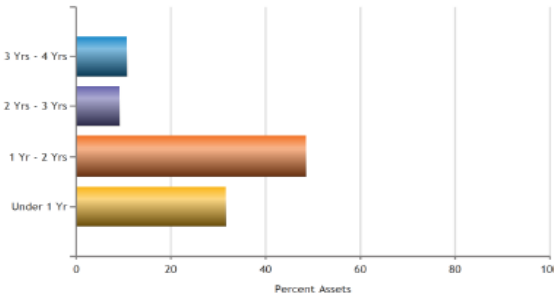
Monthly Activity Summary

	Since 3/1/2026
Beginning Book Value	12,854,049.93
Contributions	0.00
Withdrawals	0.00
Prior Month Management Fees	-879.62
Prior Month Custody Fees	-63.59
Realized Gains/Losses	0.00
Gross Interest Earnings	29,185.92
Ending Book Value	12,882,292.64

Portfolio Allocation as of 3/31/2026



Distribution by Maturity



Allocation Information

Security Type	Market Value	% Assets	Yield	WAM
U.S. GOVERNMENT AGENCY NOTES	2,334,567.12	18.0	4.06	1.65
MUNICIPAL BONDS	934,312.20	7.2	4.00	1.11
U.S. TREASURY NOTES	1,797,384.79	13.8	4.12	2.41
CERTIFICATES OF DEPOSIT	6,158,836.23	47.4	4.00	1.35
COMMERCIAL PAPERS	1,764,935.21	13.6	3.78	0.49
MONEY MARKET FUNDS	7,551.77	0.1	3.55	0.00
<b>Total</b>	<b>12,997,587.32</b>	<b>100.0</b>	<b>4.00</b>	<b>1.42</b>



Monthly Activity Summary

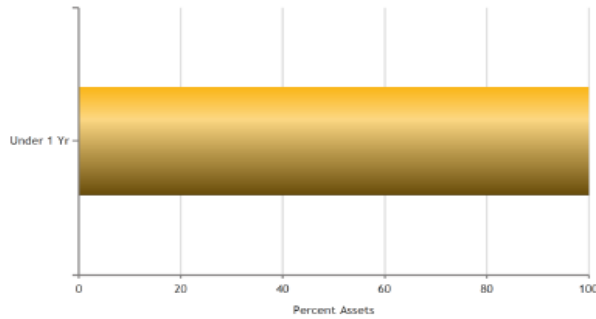
Since 3/1/2026

Beginning Book Value	23,062,946.04
Contributions	0.00
Withdrawals	0.00
Prior Month Management Fees	-1,569.05
Prior Month Custody Fees	-115.23
Realized Gains/Losses	23,314.00
Gross Interest Earnings	18,510.46
Ending Book Value	23,103,086.22

Portfolio Allocation as of 3/31/2026



Distribution by Maturity



Allocation Information

Security Type	Market Value	% Assets	Yield	WAM
U.S. GOVERNMENT AGENCY NOTES	1,496,339.06	6.4	3.68	0.23
U.S. TREASURY NOTES	3,463,158.15	14.9	3.63	0.57
U.S. TREASURY BILLS	8,845,362.90	38.1	3.62	0.17
COMMERCIAL PAPERS	8,046,634.46	34.6	3.82	0.47
MONEY MARKET FUNDS	1,388,881.68	6.0	3.55	0.00
<b>Total</b>	<b>23,240,376.24</b>	<b>100.0</b>	<b>3.69</b>	<b>0.33</b>

